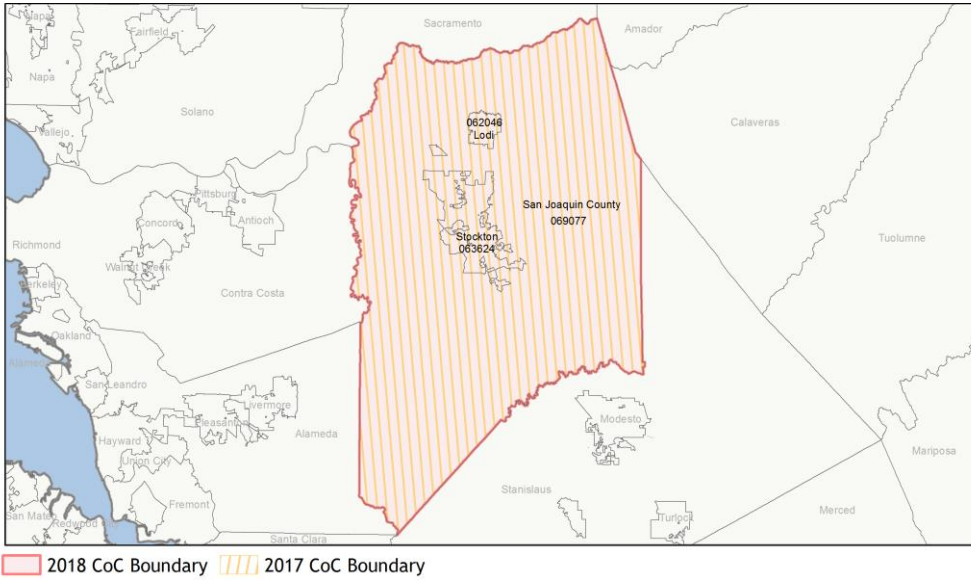
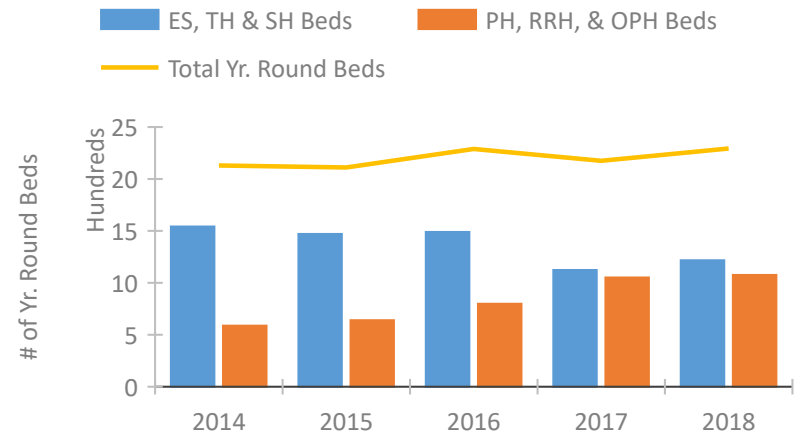


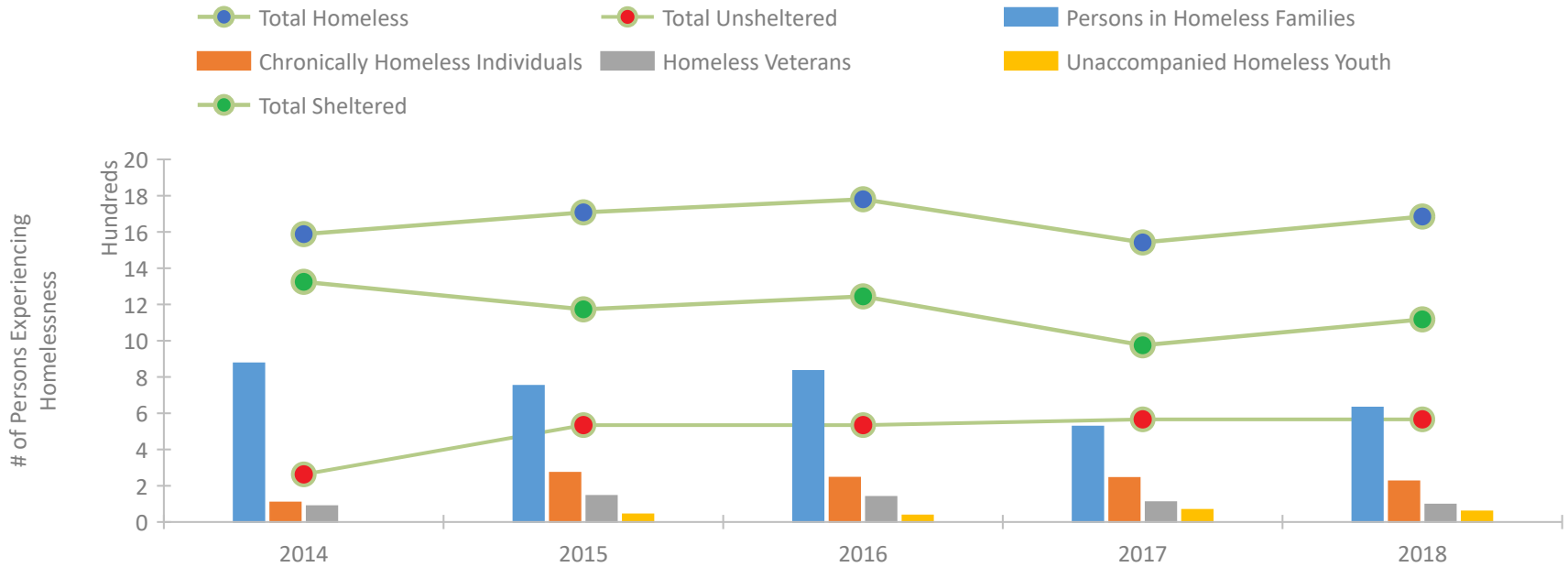
CoC Performance Profile CA-511 Stockton/San Joaquin County CoC



Housing Inventory Count by Program Type

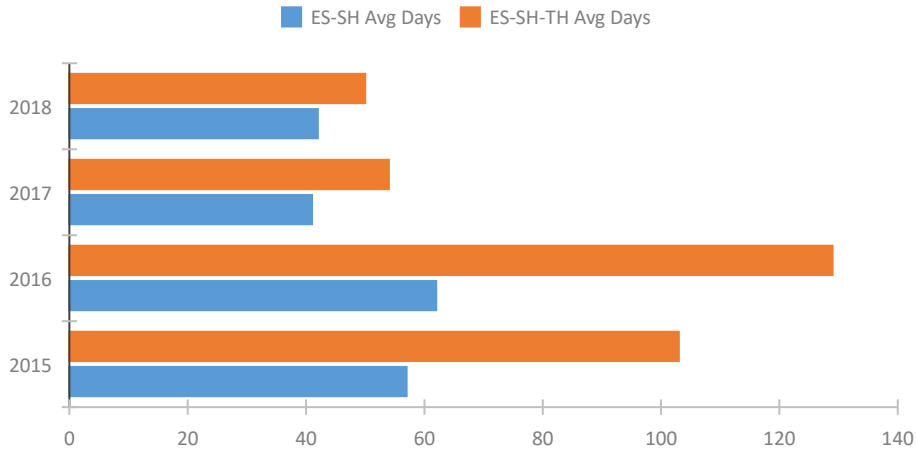


Homeless Population – Point-in-Time (PIT) Count

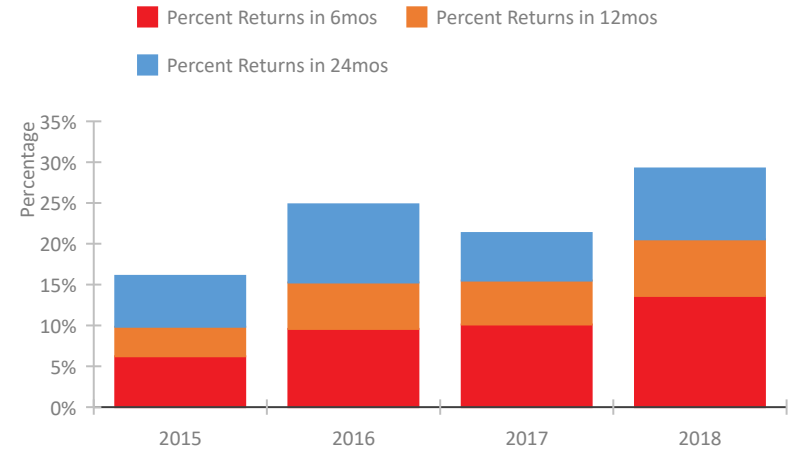


CoC Performance Profile CA-511 Stockton/San Joaquin County CoC

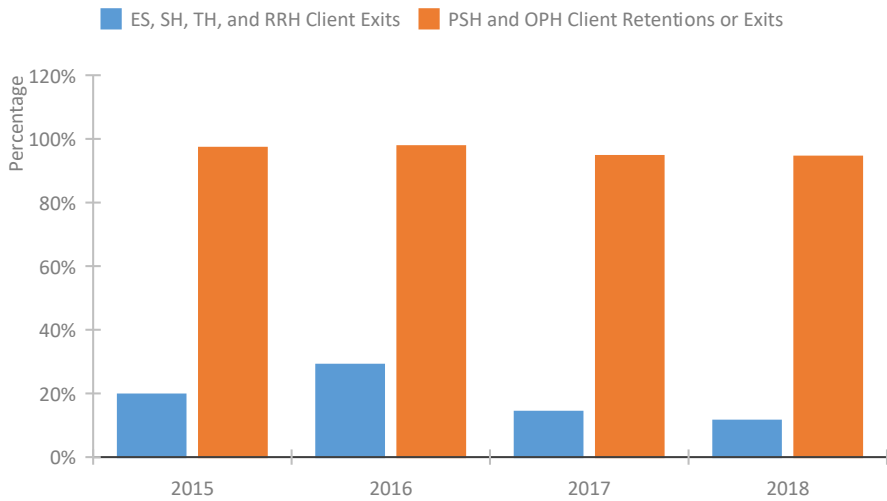
Length of Time Homeless



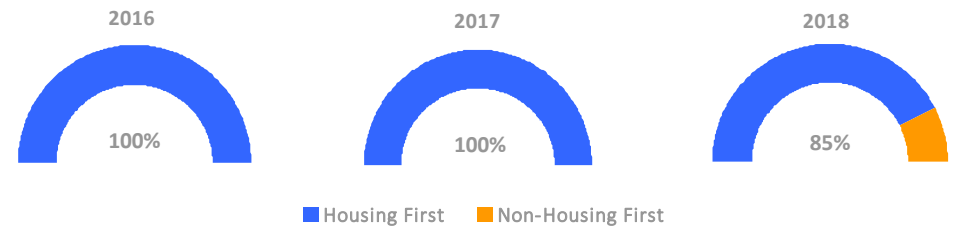
Returns to Homelessness Over Time



Exits to Permanent Housing by Program Type



Proportion of Housing First Projects by Year



Number of Projects by Year

	2016	2017	2018
Housing First Projects	11	10	11
Non-Housing First Projects	0	0	2

Data Summary: CA-511 Stockton/San Joaquin County CoC

Point-In-Time Count Summary

	2014	2015	2016	2017	2018	2017-18 Change	% Change
Number of Sheltered Persons in Families	850	703	785	508	613	105	21%
Number of Unsheltered Persons in Families	25	48	48	18	18	0	0%
Number of Sheltered Individuals	475	470	460	467	505	38	8%
Number of Unsheltered Individuals	238	487	487	549	549	0	0%
Total Homeless Persons	1,588	1,708	1,780	1,542	1,685	143	9%
Number of Sheltered Families	250	210	227	160	182	22	14%
Number of Unsheltered Families	8	15	15	5	5	0	0%
Number of Total Families	258	225	242	165	187	22	13%
Sheltered Chronically Homeless Individuals	43	61	34	119	100	-19	-16%
Unsheltered Chronically Homeless Individuals	64	210	210	124	124	0	0%
Total Chronically Homeless Individuals	107	271	244	243	224	-19	-8%
Sheltered Veterans	65	83	77	77	64	-13	-17%
Unsheltered Veterans	22	61	61	32	32	0	0%
Total Veterans	87	144	138	109	96	-13	-12%
Sheltered Unaccompanied Youth (up to 24)	--	29	23	38	29	-9	-24%
Unsheltered Unaccompanied Youth (up to 24)	--	13	13	29	29	0	0%
Total Unaccompanied Youth (up to 24)	--	42	36	67	58	-9	-13%

System Performance Measures Summary

	2014	2015	2016	2017	2018	2017-18 Change	% Change
Average Length of Time Homeless (days)	N/A	103	129	54	50	-4	-7.4%
Rate People Return to Homelessness in 6 Months	N/A	6.2%	9.6%	10.1%	13.6%	3.5%	N/A
Number of People who are Homeless for the First Time	N/A	2871	2736	5913	6772	859	14.5%
Rate People Exit from ES, SH, TH, and RRH to PH	N/A	19.7%	29.0%	14.2%	11.4%	-2.8%	N/A
Rate People in PSH and OPH Retain or Exit to PH	N/A	97.2%	97.7%	94.6%	94.4%	-0.2%	N/A

Housing Inventory Count Summary

	2014	2015	2016	2017	2018	2017-18 Change	% Change
Emergency Shelter (ES)	850	711	693	823	904	81	10%
Transitional Housing (TH)	693	760	797	300	313	13	4%
Permanent Supportive Housing (PSH)	561	635	751	751	718	-33	-4%
Rapid Re-Housing (RRH)	6	5	28	281	358	77	27%

Award Summary

	2014	2015	2016	2017	2018	2017-18 Change	% Change
Continuum of Care (CoC)	\$4,543,476	\$4,180,278	\$4,290,724	\$4,414,672	\$4,490,004	\$75,332	2%
Emergency Solutions Grants (ESG)	\$475,575	\$511,154	\$511,862	\$1,103,631	\$512,674	(\$590,957)	-54%