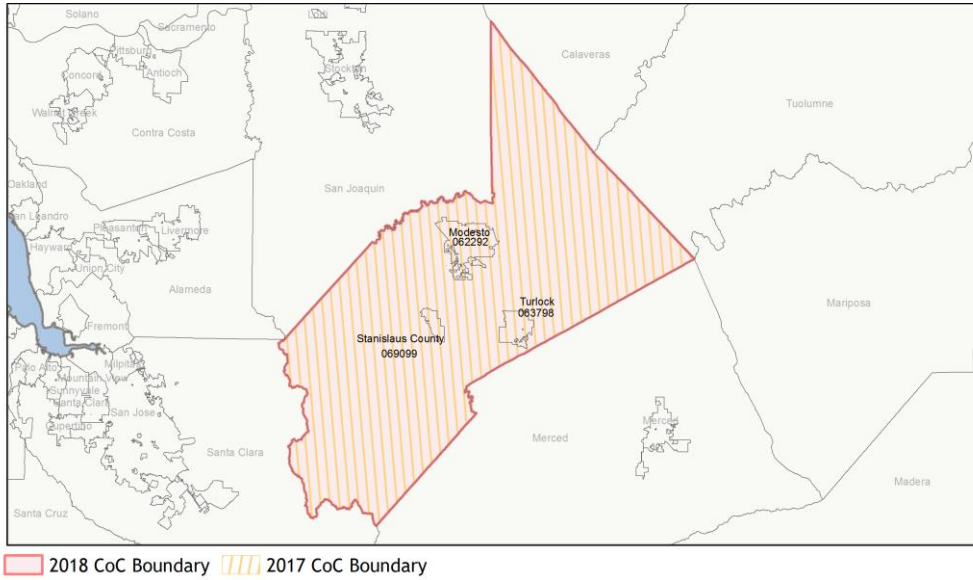
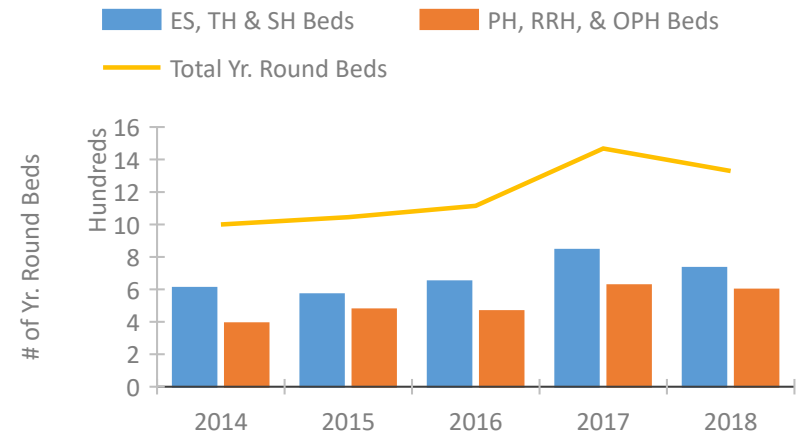


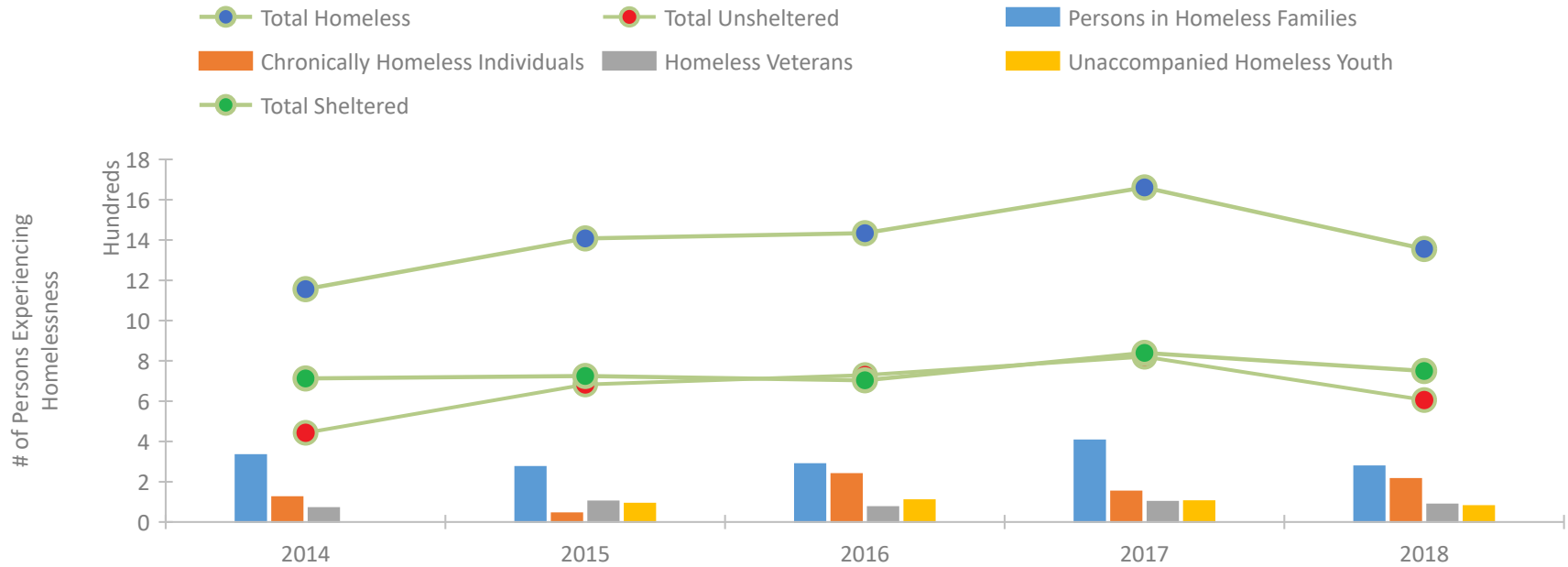
CoC Performance Profile CA-510 Turlock, Modesto/Stanislaus County CoC



Housing Inventory Count by Program Type

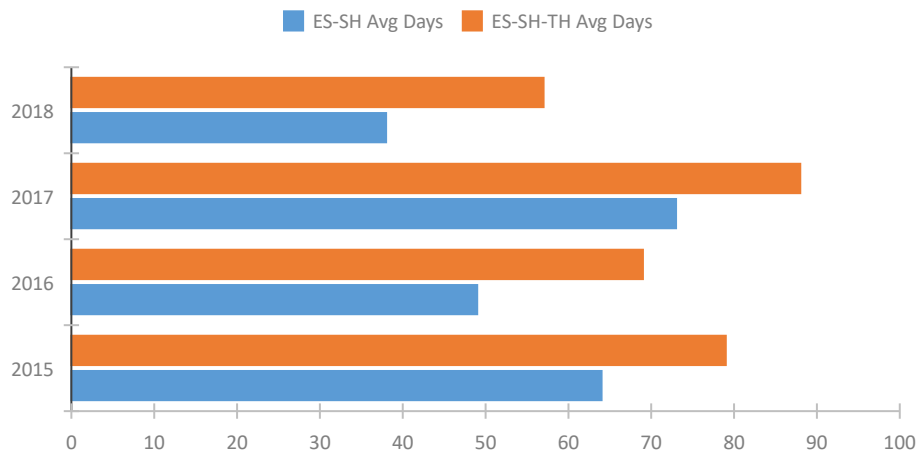


Homeless Population – Point-in-Time (PIT) Count

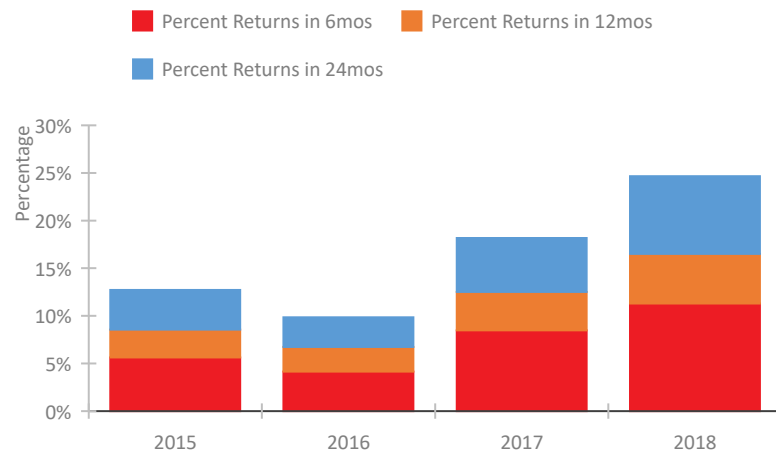


CoC Performance Profile CA-510 Turlock, Modesto/Stanislaus County CoC

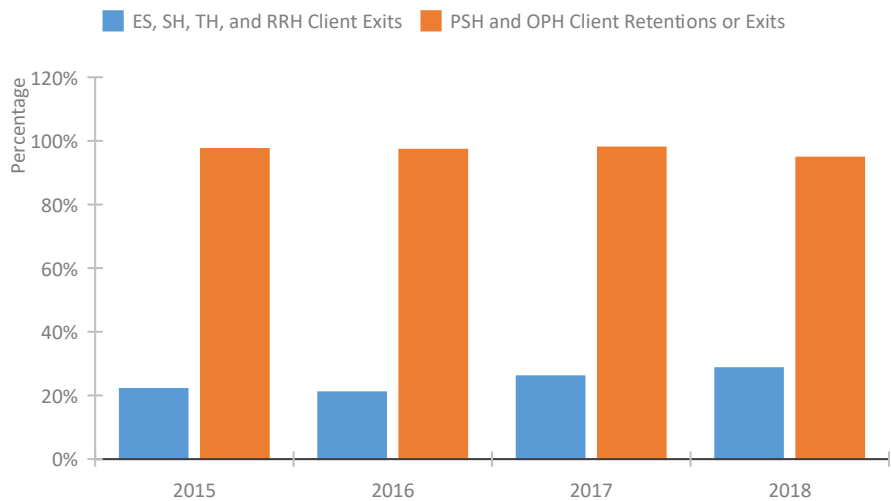
Length of Time Homeless



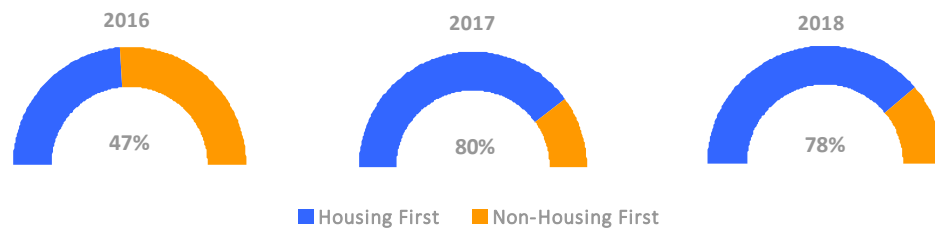
Returns to Homelessness Over Time



Exits to Permanent Housing by Program Type



Proportion of Housing First Projects by Year



Number of Projects by Year

	2016	2017	2018
Housing First Projects	9	16	14
Non-Housing First Projects	10	4	4

Data Summary: CA-510 Turlock, Modesto/Stanislaus County CoC

Point-In-Time Count Summary

	2014	2015	2016	2017	2018	2017-18 Change	% Change
Number of Sheltered Persons in Families	226	203	219	332	243	-89	-27%
Number of Unsheltered Persons in Families	106	70	68	73	33	-40	-55%
Number of Sheltered Individuals	487	522	485	508	507	-1	0%
Number of Unsheltered Individuals	337	613	662	748	573	-175	-23%
Total Homeless Persons	1,156	1,408	1,434	1,661	1,356	-305	-18%
Number of Sheltered Families	76	58	69	98	75	-23	-23%
Number of Unsheltered Families	38	20	23	20	10	-10	-50%
Number of Total Families	114	78	92	118	85	-33	-28%
Sheltered Chronically Homeless Individuals	69	17	106	44	85	41	93%
Unsheltered Chronically Homeless Individuals	54	26	132	107	129	22	21%
Total Chronically Homeless Individuals	123	43	238	151	214	63	42%
Sheltered Veterans	41	47	39	42	45	3	7%
Unsheltered Veterans	28	55	35	58	42	-16	-28%
Total Veterans	69	102	74	100	87	-13	-13%
Sheltered Unaccompanied Youth (up to 24)	--	43	46	36	33	-3	-8%
Unsheltered Unaccompanied Youth (up to 24)	--	48	62	67	46	-21	-31%
Total Unaccompanied Youth (up to 24)	--	91	108	103	79	-24	-23%

System Performance Measures Summary

	2014	2015	2016	2017	2018	2017-18 Change	% Change
Average Length of Time Homeless (days)	N/A	79	69	88	57	-31	-35.2%
Rate People Return to Homelessness in 6 Months	N/A	5.6%	4.1%	8.5%	11.3%	2.8%	N/A
Number of People who are Homeless for the First Time	N/A	2284	3155	4393	3801	-592	-13.5%
Rate People Exit from ES, SH, TH, and RRH to PH	N/A	22.0%	20.9%	26.0%	28.6%	2.6%	N/A
Rate People in PSH and OPH Retain or Exit to PH	N/A	97.5%	97.2%	97.9%	94.7%	-3.2%	N/A

Housing Inventory Count Summary

	2014	2015	2016	2017	2018	2017-18 Change	% Change
Emergency Shelter (ES)	330	285	358	581	525	-56	-10%
Transitional Housing (TH)	279	284	291	262	207	-55	-21%
Permanent Supportive Housing (PSH)	391	422	450	542	564	22	4%
Rapid Re-Housing (RRH)	--	54	16	83	34	-49	-59%

Award Summary

	2014	2015	2016	2017	2018	2017-18 Change	% Change
Continuum of Care (CoC)	\$3,327,972	\$2,963,830	\$3,110,273	\$3,231,538	\$3,399,756	\$168,218	5%
Emergency Solutions Grants (ESG)	\$323,306	\$358,578	\$364,233	\$933,875	\$360,499	(\$573,376)	-61%