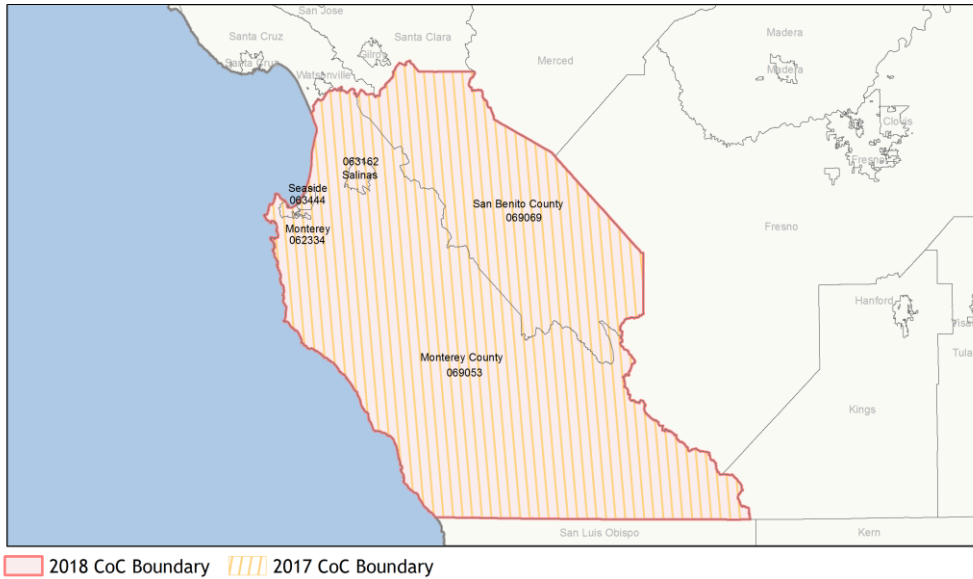
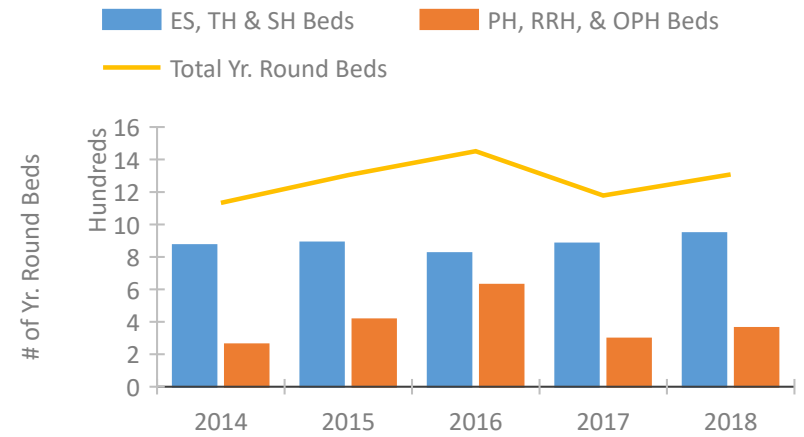


# CoC Performance Profile CA-506

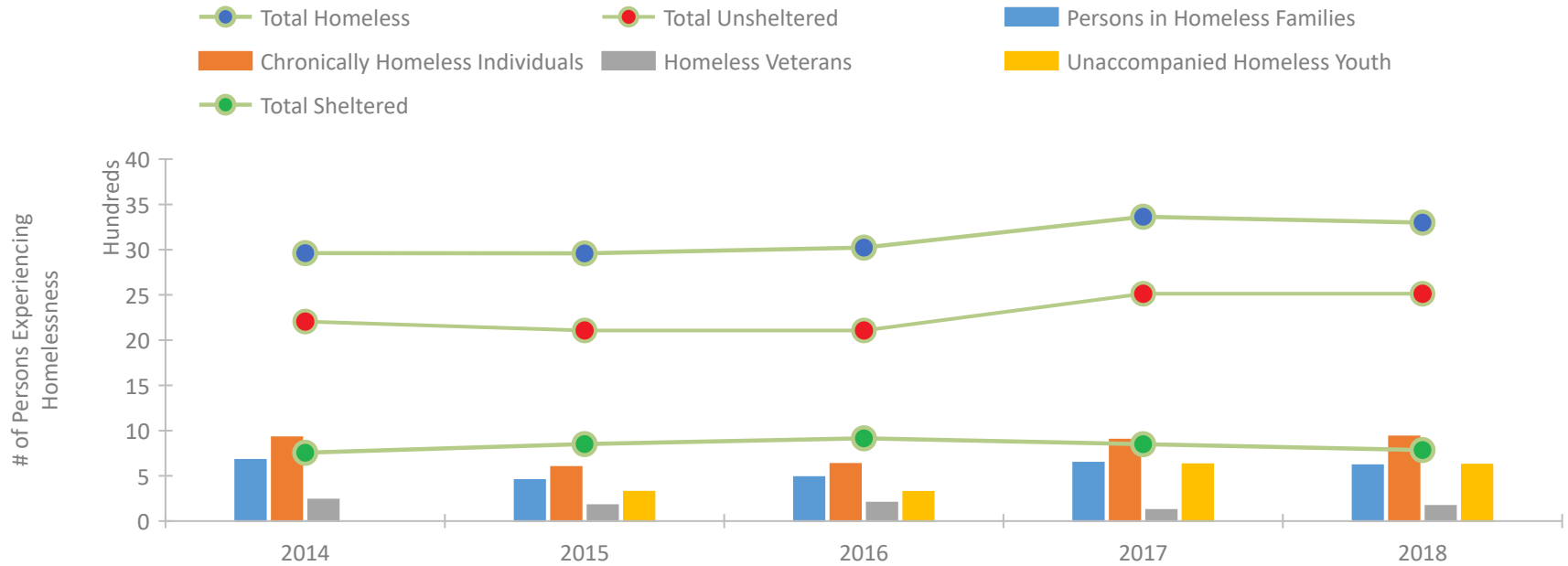
## Salinas/Monterey, San Benito Counties CoC



### Housing Inventory Count by Program Type



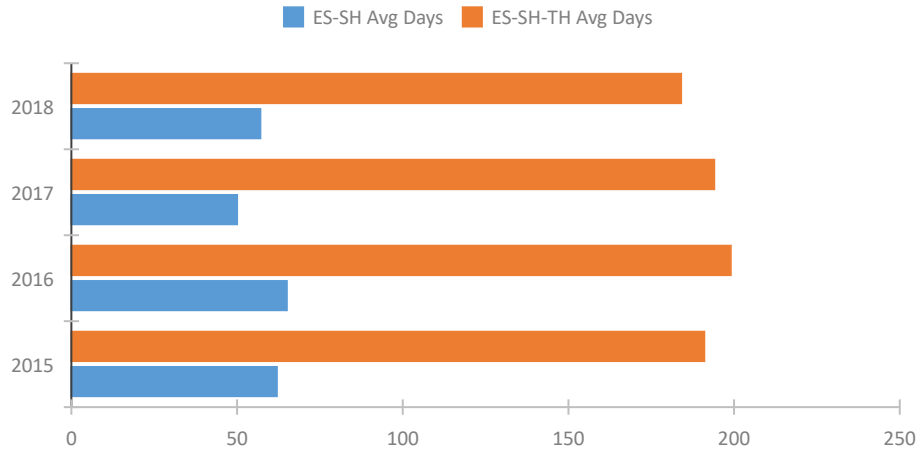
### Homeless Population – Point-in-Time (PIT) Count



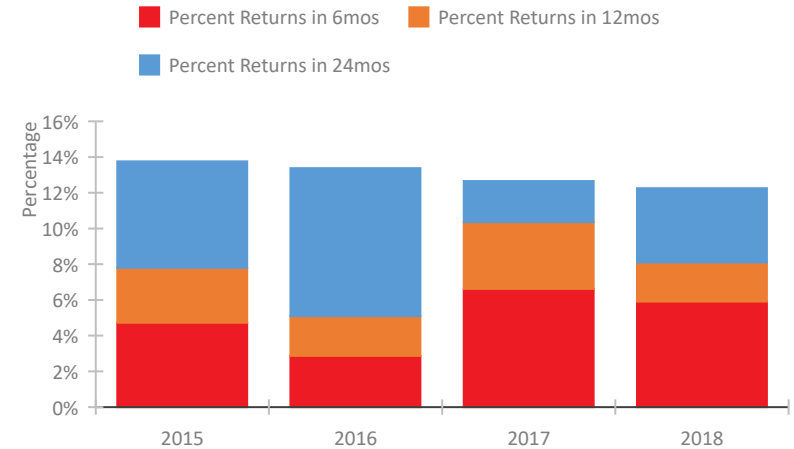
## CoC Performance Profile CA-506

### Salinas/Monterey, San Benito Counties CoC

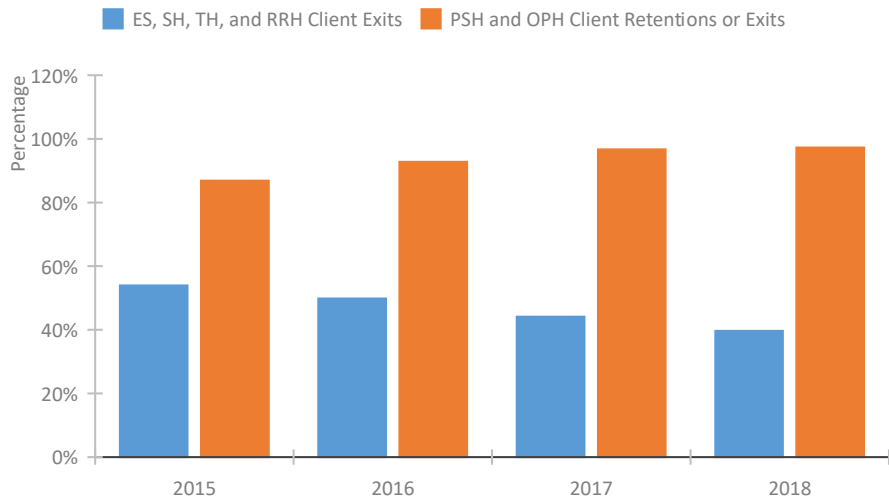
#### Length of Time Homeless



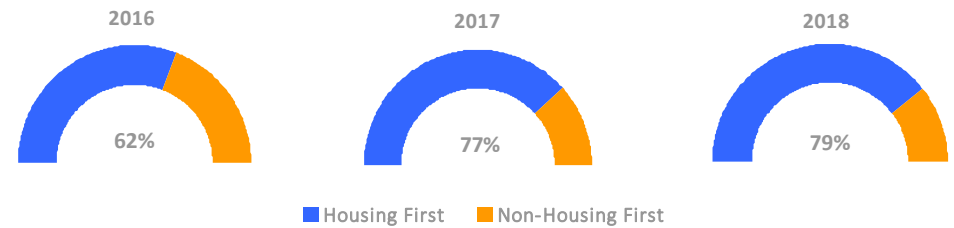
#### Returns to Homelessness Over Time



#### Exits to Permanent Housing by Program Type



#### Proportion of Housing First Projects by Year



#### Number of Projects by Year

	2016	2017	2018
Housing First Projects	8	10	11
Non-Housing First Projects	5	3	3

## Data Summary: CA-506 Salinas/Monterey, San Benito Counties CoC

### Point-In-Time Count Summary

	2014	2015	2016	2017	2018	2017-18 Change	% Change
Number of Sheltered Persons in Families	395	440	473	429	400	-29	-7%
Number of Unsheltered Persons in Families	281	13	13	216	216	0	0%
Number of Sheltered Individuals	361	412	442	421	385	-36	-9%
Number of Unsheltered Individuals	1,925	2,094	2,094	2,298	2,298	0	0%
<b>Total Homeless Persons</b>	<b>2,962</b>	<b>2,959</b>	<b>3,022</b>	<b>3,364</b>	<b>3,299</b>	<b>-65</b>	<b>-2%</b>
Number of Sheltered Families	149	143	146	129	118	-11	-9%
Number of Unsheltered Families	126	4	4	55	55	0	0%
<b>Number of Total Families</b>	<b>275</b>	<b>147</b>	<b>150</b>	<b>184</b>	<b>173</b>	<b>-11</b>	<b>-6%</b>
Sheltered Chronically Homeless Individuals	144	36	69	41	76	35	85%
Unsheltered Chronically Homeless Individuals	781	562	562	859	859	0	0%
<b>Total Chronically Homeless Individuals</b>	<b>925</b>	<b>598</b>	<b>631</b>	<b>900</b>	<b>935</b>	<b>35</b>	<b>4%</b>
Sheltered Veterans	77	55	83	67	111	44	66%
Unsheltered Veterans	161	121	121	56	56	0	0%
<b>Total Veterans</b>	<b>238</b>	<b>176</b>	<b>204</b>	<b>123</b>	<b>167</b>	<b>44</b>	<b>36%</b>
Sheltered Unaccompanied Youth (up to 24)	--	52	50	38	34	-4	-11%
Unsheltered Unaccompanied Youth (up to 24)	--	272	272	589	589	0	0%
<b>Total Unaccompanied Youth (up to 24)</b>	<b>--</b>	<b>324</b>	<b>322</b>	<b>627</b>	<b>623</b>	<b>-4</b>	<b>-1%</b>

### System Performance Measures Summary

	2014	2015	2016	2017	2018	2017-18 Change	% Change
Average Length of Time Homeless (days)	N/A	191	199	194	184	-10	-5.2%
Rate People Return to Homelessness in 6 Months	N/A	4.7%	2.9%	6.6%	5.9%	-0.7%	N/A
Number of People who are Homeless for the First Time	N/A	1086	1045	1087	1272	185	17%
Rate People Exit from ES, SH, TH, and RRH to PH	N/A	53.9%	49.8%	44.1%	39.7%	-4.4%	N/A
Rate People in PSH and OPH Retain or Exit to PH	N/A	86.9%	92.8%	96.7%	97.3%	0.6%	N/A

### Housing Inventory Count Summary

	2014	2015	2016	2017	2018	2017-18 Change	% Change
Emergency Shelter (ES)	322	324	308	292	345	53	18%
Transitional Housing (TH)	550	565	515	590	601	11	2%
Permanent Supportive Housing (PSH)	261	376	311	277	299	22	8%
Rapid Re-Housing (RRH)	--	39	317	19	18	-1	-5%
Other Permanent Housing (OPH)	--	--	--	--	45	--	--

### Award Summary

	2014	2015	2016	2017	2018	2017-18 Change	% Change
<b>Continuum of Care (CoC)</b>	\$2,121,998	\$1,972,200	\$1,967,620	\$1,864,863	\$1,840,661	(\$24,202)	-1%
<b>Emergency Solutions Grants (ESG)</b>	\$159,590	\$177,842	\$178,203	\$447,820	\$170,830	(\$276,990)	-62%