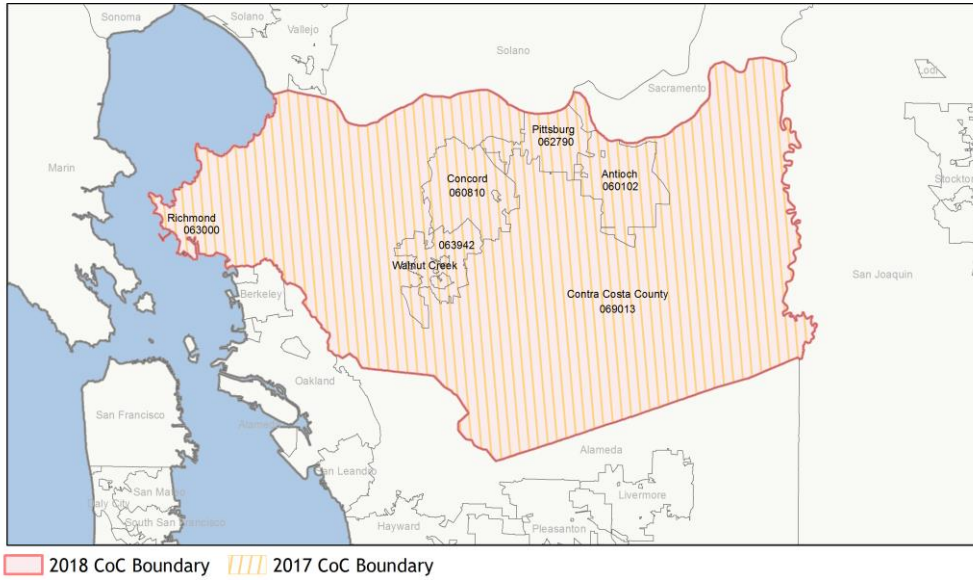
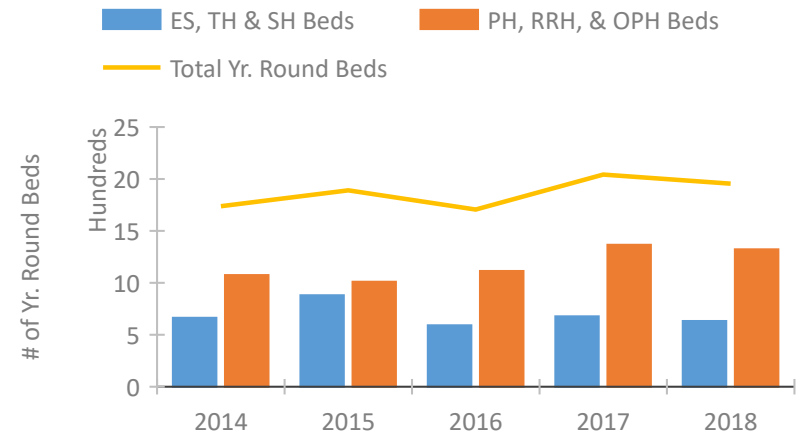


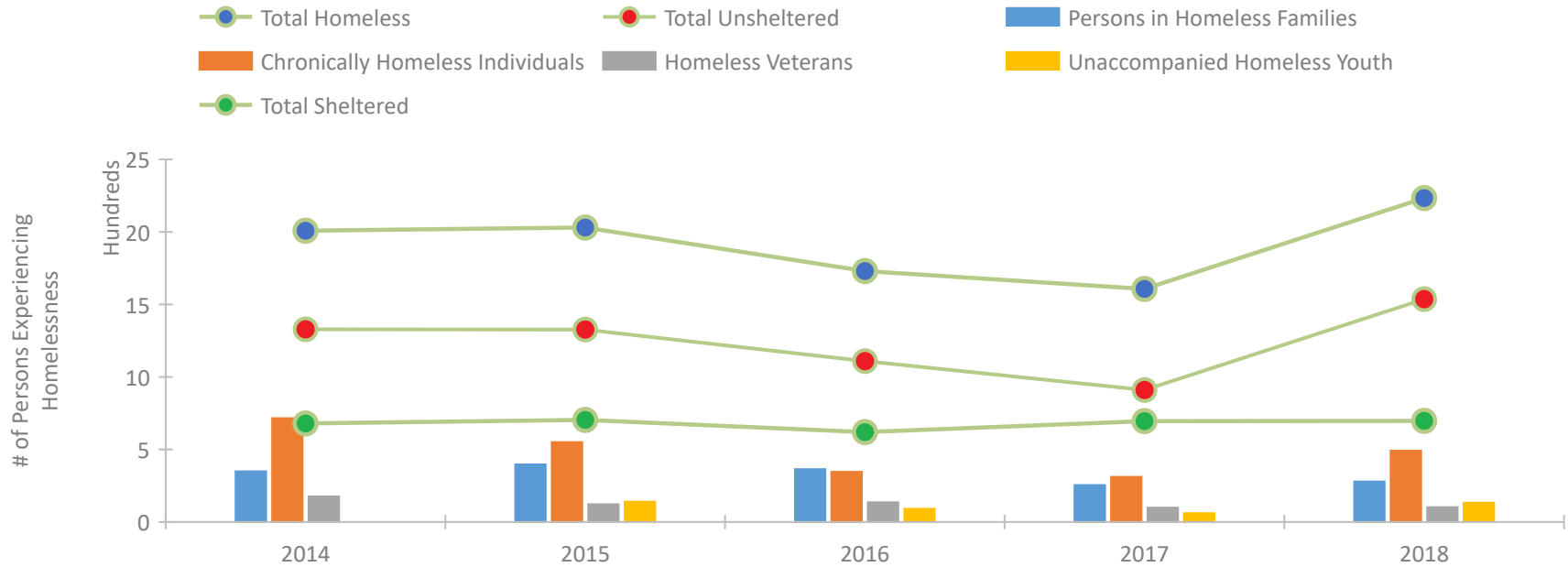
CoC Performance Profile CA-505 Richmond/Contra Costa County CoC



Housing Inventory Count by Program Type

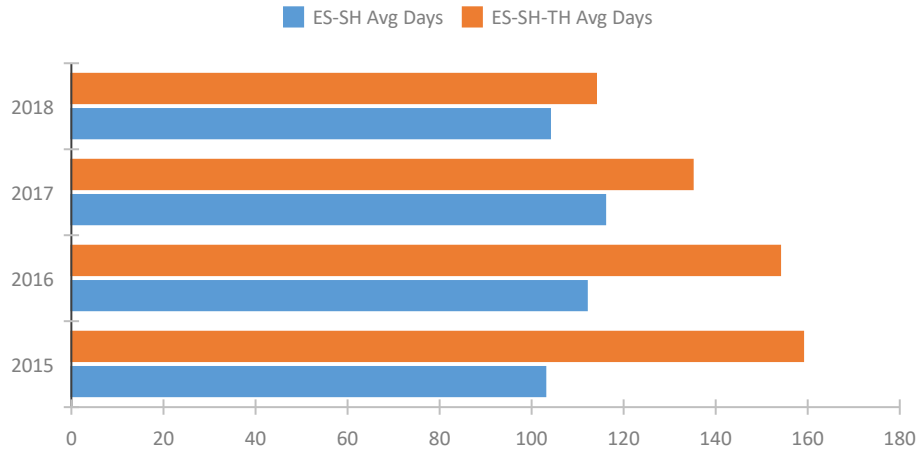


Homeless Population – Point-in-Time (PIT) Count

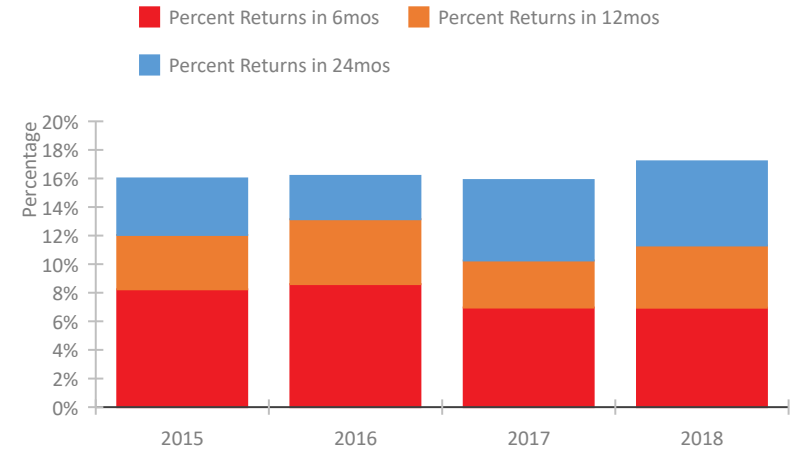


CoC Performance Profile CA-505 Richmond/Contra Costa County CoC

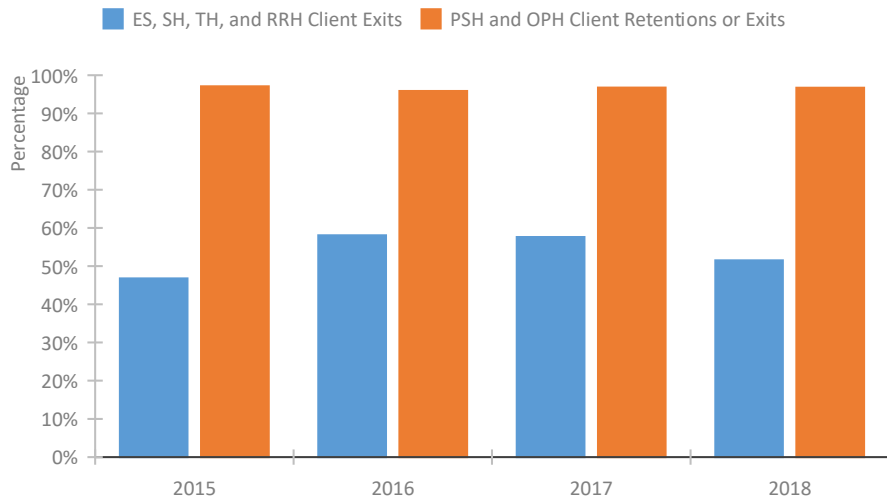
Length of Time Homeless



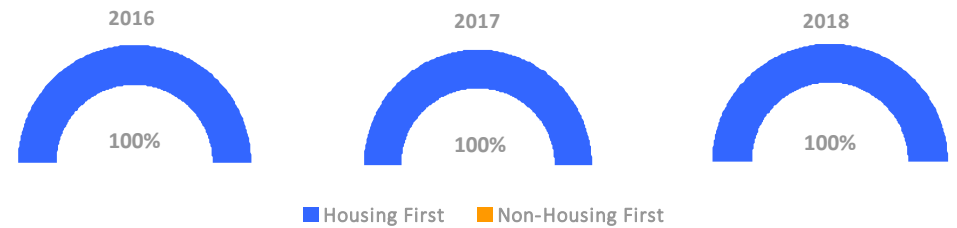
Returns to Homelessness Over Time



Exits to Permanent Housing by Program Type



Proportion of Housing First Projects by Year



Number of Projects by Year

	2016	2017	2018
Housing First Projects	19	21	20
Non-Housing First Projects	0	0	0

Data Summary: CA-505 Richmond/Contra Costa County CoC

Point-In-Time Count Summary

	2014	2015	2016	2017	2018	2017-18 Change	% Change
Number of Sheltered Persons in Families	349	318	235	184	174	-10	-5%
Number of Unsheltered Persons in Families	0	79	129	71	105	34	48%
Number of Sheltered Individuals	331	386	385	512	523	11	2%
Number of Unsheltered Individuals	1,329	1,248	981	840	1,432	592	70%
Total Homeless Persons	2,009	2,031	1,730	1,607	2,234	627	39%
Number of Sheltered Families	111	91	73	62	55	-7	-11%
Number of Unsheltered Families	0	25	38	22	34	12	55%
Number of Total Families	111	116	111	84	89	5	6%
Sheltered Chronically Homeless Individuals	143	174	145	117	162	45	38%
Unsheltered Chronically Homeless Individuals	573	377	201	194	330	136	70%
Total Chronically Homeless Individuals	716	551	346	311	492	181	58%
Sheltered Veterans	41	44	51	50	56	6	12%
Unsheltered Veterans	135	78	85	49	46	-3	-6%
Total Veterans	176	122	136	99	102	3	3%
Sheltered Unaccompanied Youth (up to 24)	--	43	40	30	38	8	27%
Unsheltered Unaccompanied Youth (up to 24)	--	97	51	31	95	64	206%
Total Unaccompanied Youth (up to 24)	--	140	91	61	133	72	118%

System Performance Measures Summary

	2014	2015	2016	2017	2018	2017-18 Change	% Change
Average Length of Time Homeless (days)	N/A	159	154	135	114	-21	-15.6%
Rate People Return to Homelessness in 6 Months	N/A	8.3%	8.6%	7.0%	7.0%	0%	N/A
Number of People who are Homeless for the First Time	N/A	1922	1837	1707	1854	147	8.6%
Rate People Exit from ES, SH, TH, and RRH to PH	N/A	46.8%	58.1%	57.6%	51.5%	-6.1%	N/A
Rate People in PSH and OPH Retain or Exit to PH	N/A	97.1%	95.9%	96.7%	96.7%	0%	N/A

Housing Inventory Count Summary

	2014	2015	2016	2017	2018	2017-18 Change	% Change
Emergency Shelter (ES)	388	527	418	459	474	15	3%
Transitional Housing (TH)	275	354	173	218	158	-60	-28%
Permanent Supportive Housing (PSH)	954	870	867	1,183	1,092	-91	-8%
Rapid Re-Housing (RRH)	96	140	248	183	231	48	26%

Award Summary

	2014	2015	2016	2017	2018	2017-18 Change	% Change
Continuum of Care (CoC)	\$10,767,490	\$11,104,352	\$13,076,992	\$14,617,036	\$15,857,604	\$1,240,568	8%
Emergency Solutions Grants (ESG)	\$236,639	\$265,324	\$269,776	\$365,299	\$368,211	\$2,912	1%