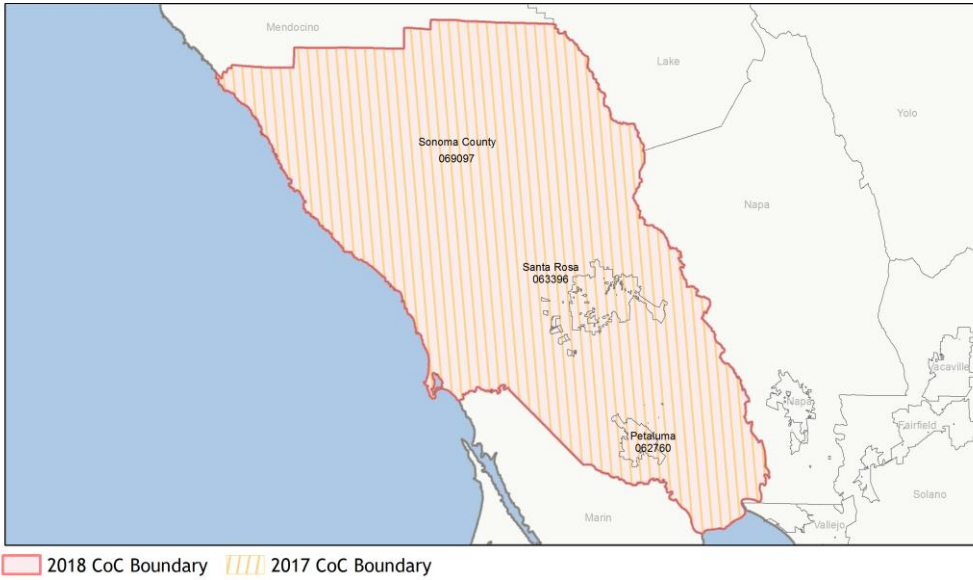
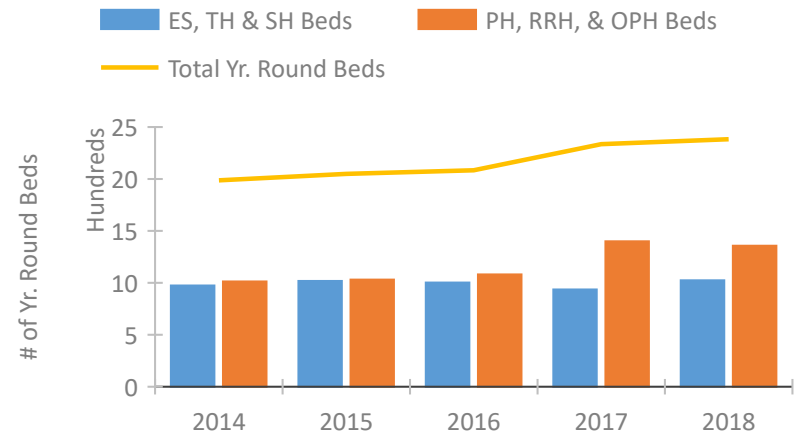


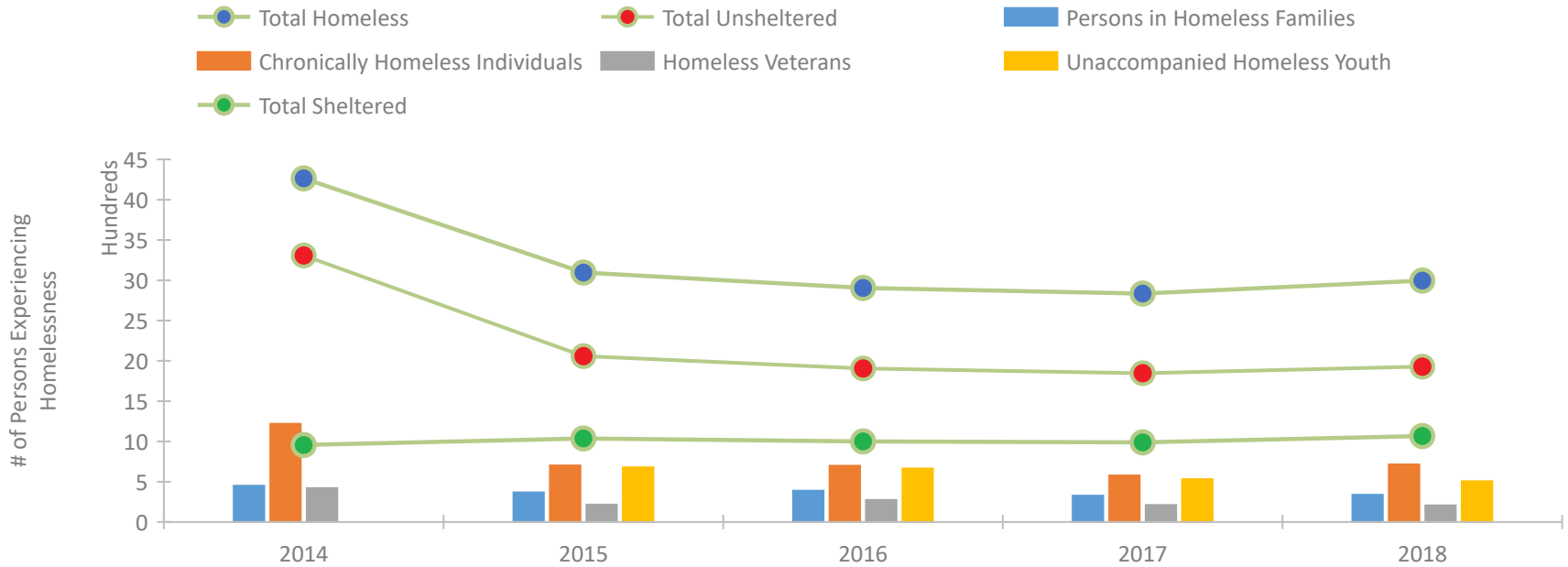
CoC Performance Profile CA-504 Santa Rosa, Petaluma/Sonoma County CoC



Housing Inventory Count by Program Type

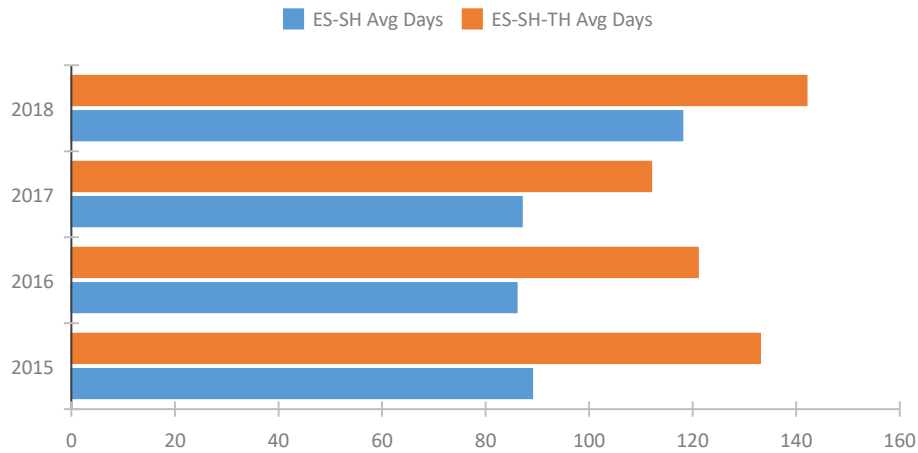


Homeless Population – Point-in-Time (PIT) Count

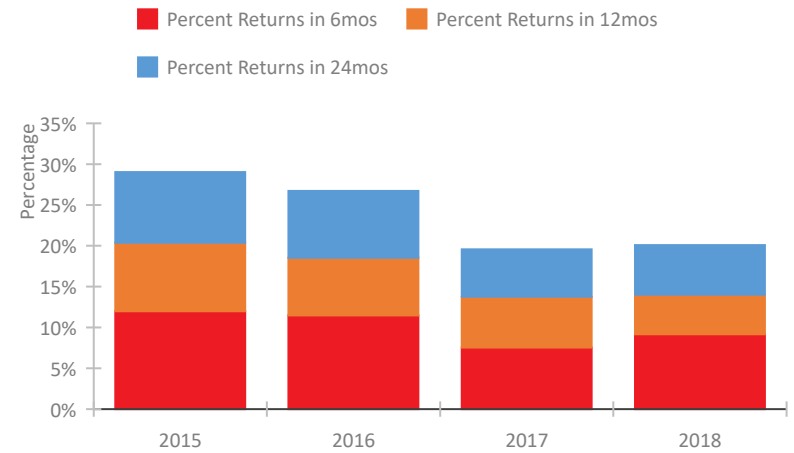


CoC Performance Profile CA-504 Santa Rosa, Petaluma/Sonoma County CoC

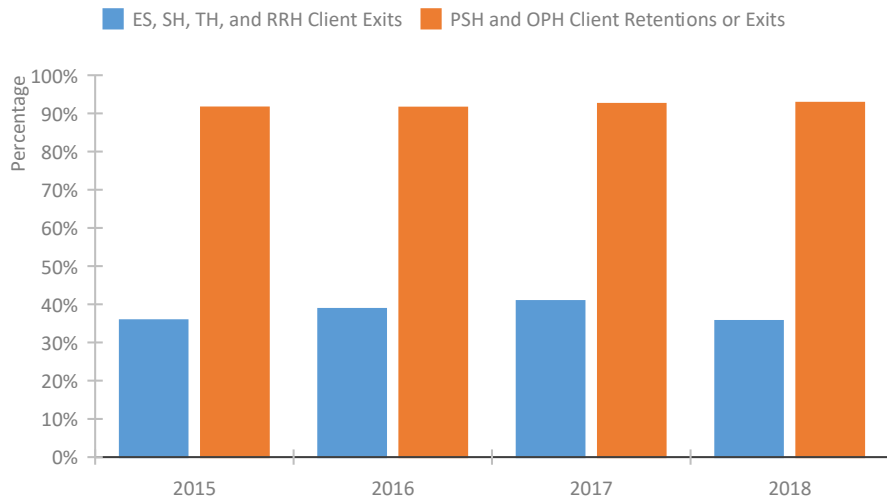
Length of Time Homeless



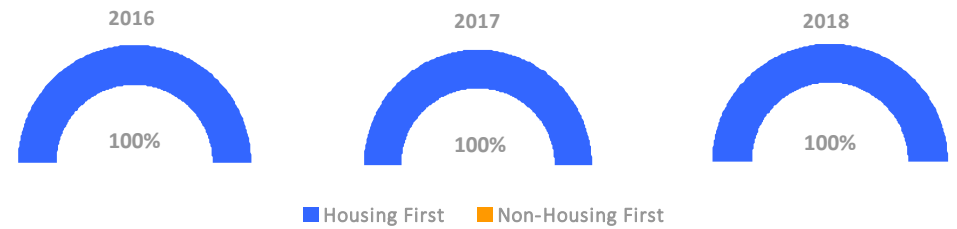
Returns to Homelessness Over Time



Exits to Permanent Housing by Program Type



Proportion of Housing First Projects by Year



Number of Projects by Year

	2016	2017	2018
Housing First Projects	15	15	16
Non-Housing First Projects	0	0	0

Data Summary: CA-504 Santa Rosa, Petaluma/Sonoma County CoC

Point-In-Time Count Summary

	2014	2015	2016	2017	2018	2017-18 Change	% Change
Number of Sheltered Persons in Families	396	344	369	319	307	-12	-4%
Number of Unsheltered Persons in Families	54	23	20	7	32	25	357%
Number of Sheltered Individuals	561	693	631	669	760	91	14%
Number of Unsheltered Individuals	3,255	2,037	1,886	1,840	1,897	57	3%
Total Homeless Persons	4,266	3,097	2,906	2,835	2,996	161	6%
Number of Sheltered Families	103	119	149	109	91	-18	-17%
Number of Unsheltered Families	16	8	7	2	13	11	550%
Number of Total Families	119	127	156	111	104	-7	-6%
Sheltered Chronically Homeless Individuals	190	114	150	113	88	-25	-22%
Unsheltered Chronically Homeless Individuals	1,029	588	549	464	627	163	35%
Total Chronically Homeless Individuals	1,219	702	699	577	715	138	24%
Sheltered Veterans	78	79	54	66	63	-3	-5%
Unsheltered Veterans	343	136	220	145	144	-1	-1%
Total Veterans	421	215	274	211	207	-4	-2%
Sheltered Unaccompanied Youth (up to 24)	--	37	64	49	62	13	27%
Unsheltered Unaccompanied Youth (up to 24)	--	641	600	483	443	-40	-8%
Total Unaccompanied Youth (up to 24)	--	678	664	532	505	-27	-5%

System Performance Measures Summary

	2014	2015	2016	2017	2018	2017-18 Change	% Change
Average Length of Time Homeless (days)	N/A	133	121	112	142	30	26.8%
Rate People Return to Homelessness in 6 Months	N/A	12.0%	11.5%	7.5%	9.2%	1.6%	N/A
Number of People who are Homeless for the First Time	N/A	1262	2374	2395	1625	-770	-32.2%
Rate People Exit from ES, SH, TH, and RRH to PH	N/A	35.8%	38.8%	40.8%	35.6%	-5.2%	N/A
Rate People in PSH and OPH Retain or Exit to PH	N/A	91.6%	91.5%	92.5%	92.8%	0.3%	N/A

Housing Inventory Count Summary

	2014	2015	2016	2017	2018	2017-18 Change	% Change
Emergency Shelter (ES)	557	558	594	605	701	96	16%
Transitional Housing (TH)	418	460	409	331	324	-7	-2%
Permanent Supportive Housing (PSH)	804	979	917	952	960	8	1%
Rapid Re-Housing (RRH)	106	52	164	330	280	-50	-15%
Other Permanent Housing (OPH)	103	--	--	118	118	0	0%

Award Summary

	2014	2015	2016	2017	2018	2017-18 Change	% Change
Continuum of Care (CoC)	\$2,970,948	\$3,087,262	\$3,076,336	\$3,312,364	\$3,721,504	\$409,140	12%
Emergency Solutions Grants (ESG)	\$135,863	\$144,160	\$148,183	\$149,323	\$152,599	\$3,276	2%