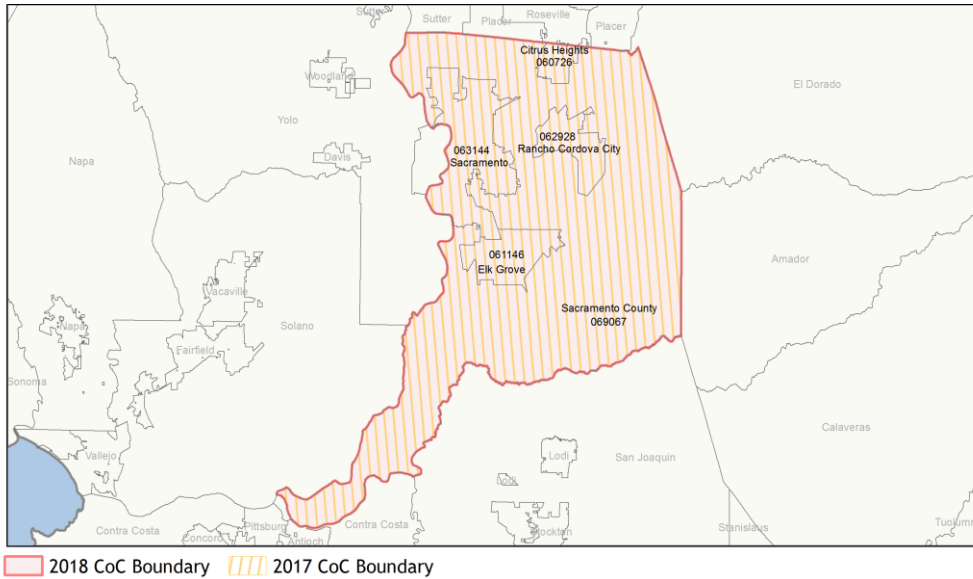
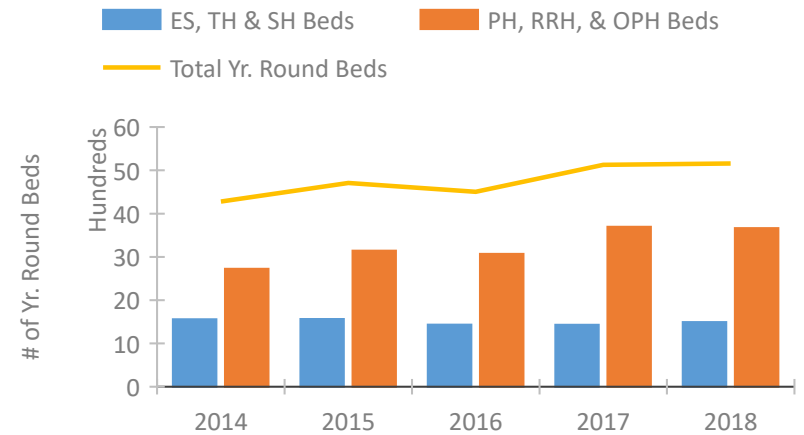


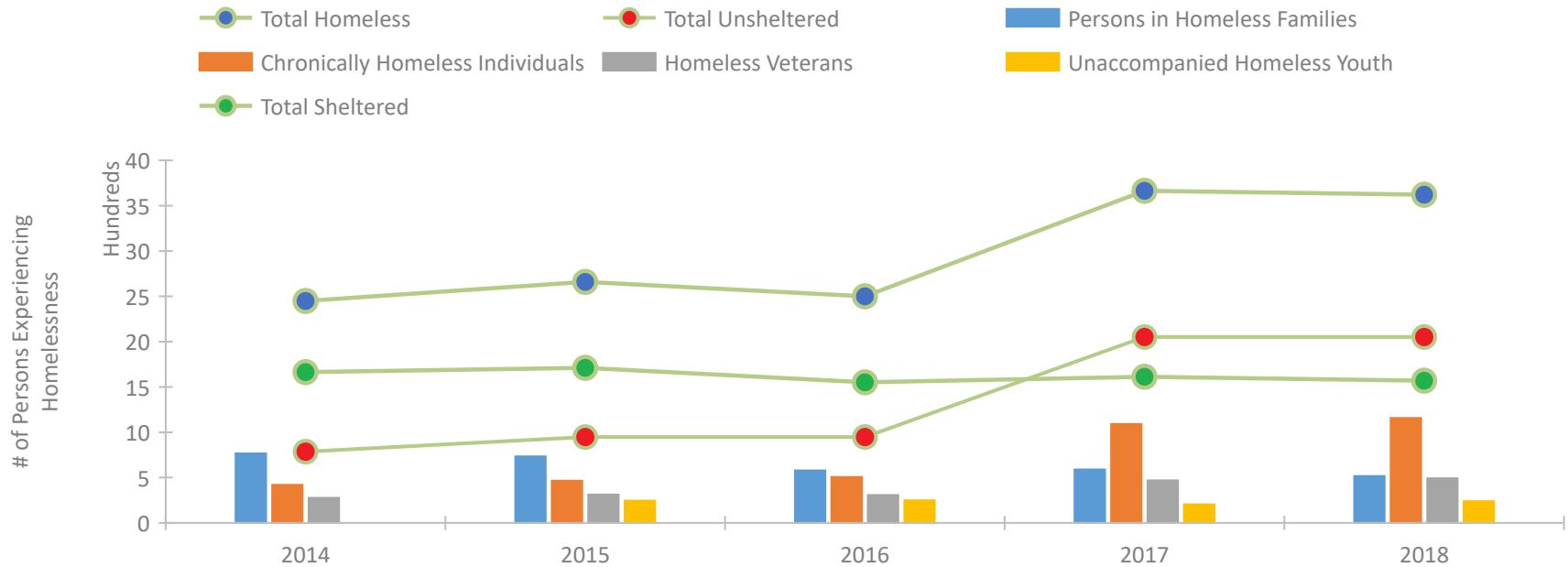
CoC Performance Profile CA-503 Sacramento City & County CoC



Housing Inventory Count by Program Type

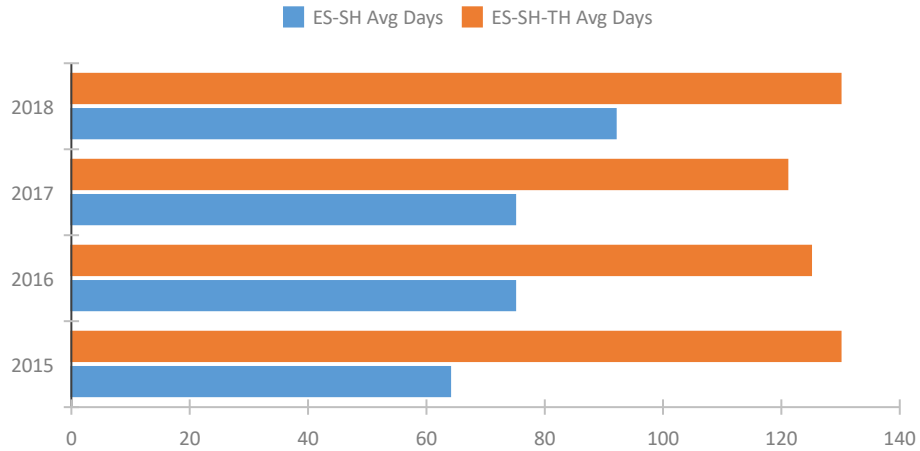


Homeless Population – Point-in-Time (PIT) Count

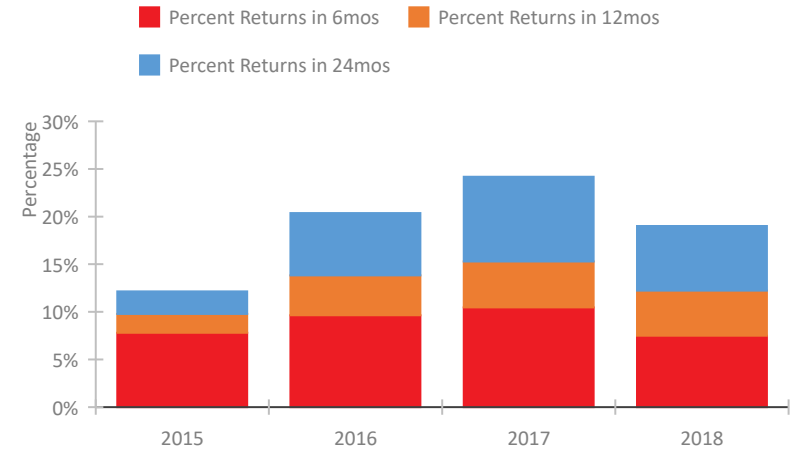


CoC Performance Profile CA-503 Sacramento City & County CoC

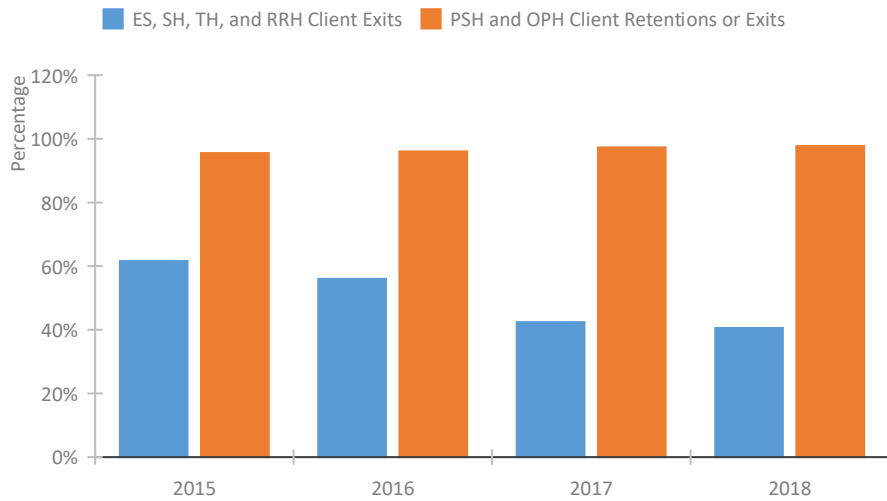
Length of Time Homeless



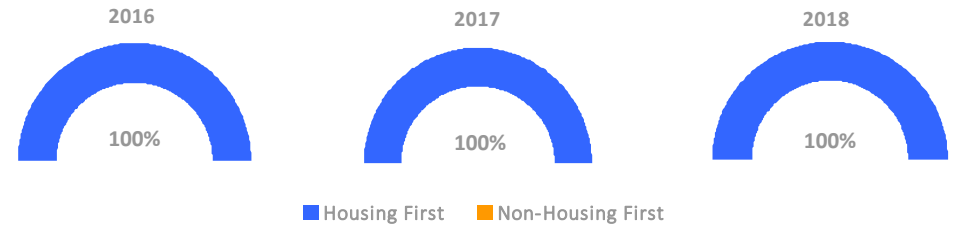
Returns to Homelessness Over Time



Exits to Permanent Housing by Program Type



Proportion of Housing First Projects by Year



Number of Projects by Year			
	2016	2017	2018
Housing First Projects	32	33	30
Non-Housing First Projects	0	0	0

Data Summary: CA-503 Sacramento City & County CoC

Point-In-Time Count Summary

	2014	2015	2016	2017	2018	2017-18 Change	% Change
Number of Sheltered Persons in Families	761	697	542	572	500	-72	-13%
Number of Unsheltered Persons in Families	5	37	37	17	17	0	0%
Number of Sheltered Individuals	902	1,014	1,010	1,041	1,069	28	3%
Number of Unsheltered Individuals	781	911	911	2,035	2,035	0	0%
Total Homeless Persons	2,449	2,659	2,500	3,665	3,621	-44	-1%
Number of Sheltered Families	247	227	183	180	155	-25	-14%
Number of Unsheltered Families	1	11	11	6	6	0	0%
Number of Total Families	248	238	194	186	161	-25	-13%
Sheltered Chronically Homeless Individuals	135	153	194	288	355	67	23%
Unsheltered Chronically Homeless Individuals	285	313	313	803	803	0	0%
Total Chronically Homeless Individuals	420	466	507	1,091	1,158	67	6%
Sheltered Veterans	141	171	166	142	165	23	16%
Unsheltered Veterans	136	142	142	327	327	0	0%
Total Veterans	277	313	308	469	492	23	5%
Sheltered Unaccompanied Youth (up to 24)	--	96	100	87	121	34	39%
Unsheltered Unaccompanied Youth (up to 24)	--	150	150	118	118	0	0%
Total Unaccompanied Youth (up to 24)	--	246	250	205	239	34	17%

System Performance Measures Summary

	2014	2015	2016	2017	2018	2017-18 Change	% Change
Average Length of Time Homeless (days)	N/A	130	125	121	130	9	7.4%
Rate People Return to Homelessness in 6 Months	N/A	7.8%	9.6%	10.5%	7.5%	-3%	N/A
Number of People who are Homeless for the First Time	N/A	3640	3941	5138	5453	315	6.1%
Rate People Exit from ES, SH, TH, and RRH to PH	N/A	61.6%	56.0%	42.4%	40.5%	-1.9%	N/A
Rate People in PSH and OPH Retain or Exit to PH	N/A	95.5%	96.1%	97.3%	97.7%	0.4%	N/A

Housing Inventory Count Summary

	2014	2015	2016	2017	2018	2017-18 Change	% Change
Emergency Shelter (ES)	621	665	700	762	891	129	17%
Transitional Housing (TH)	936	899	735	669	602	-67	-10%
Permanent Supportive Housing (PSH)	2,610	2,787	2,970	3,028	2,933	-95	-3%
Rapid Re-Housing (RRH)	114	358	101	661	732	71	11%

Award Summary

	2014	2015	2016	2017	2018	2017-18 Change	% Change
Continuum of Care (CoC)	\$18,719,062	\$19,138,664	\$19,511,838	\$20,180,083	\$20,915,190	\$735,107	4%
Emergency Solutions Grants (ESG)	\$740,230	\$809,838	\$846,869	\$856,961	\$861,558	\$4,597	1%