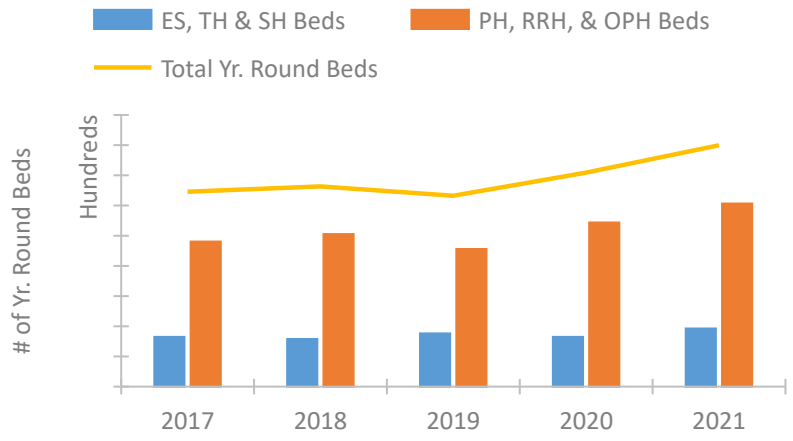


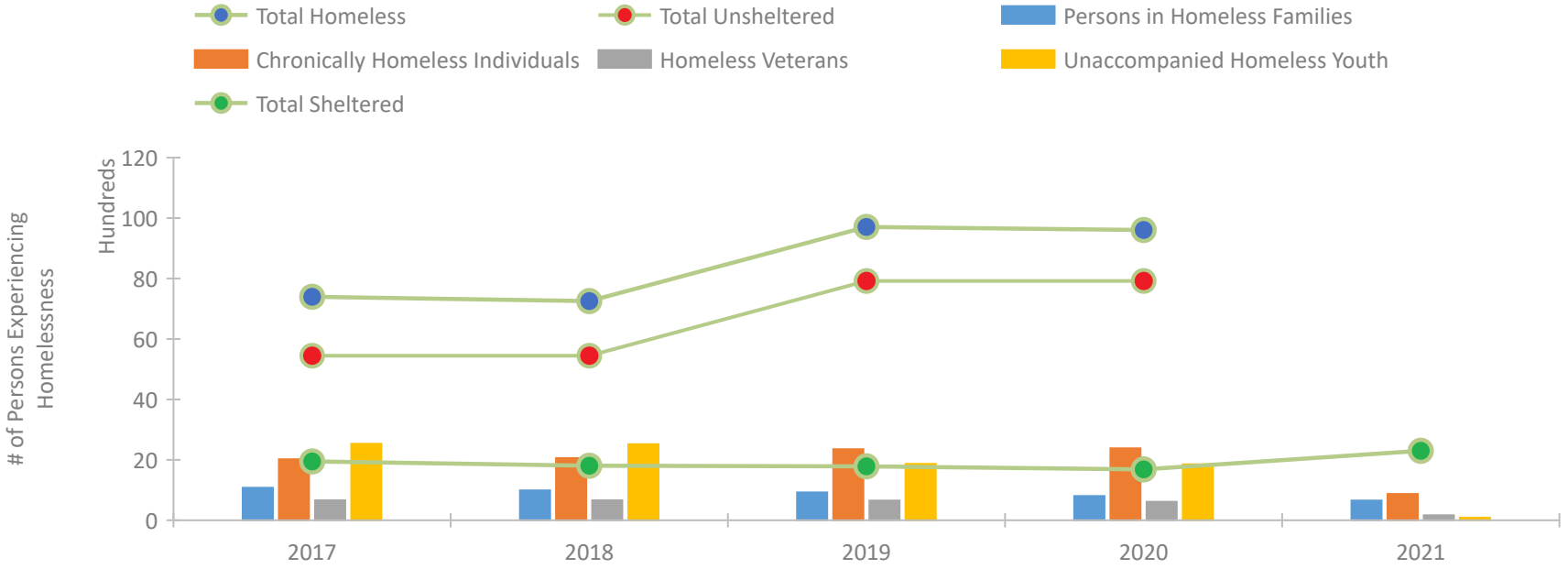
CoC Performance Profile CA-500 San Jose/Santa Clara City & County CoC



Housing Inventory Count by Program Type



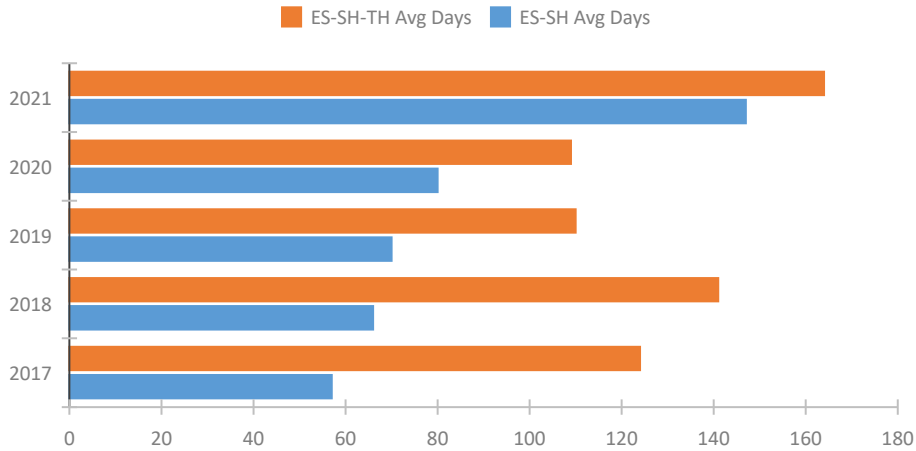
Homeless Population – Point-in-Time (PIT) Count*



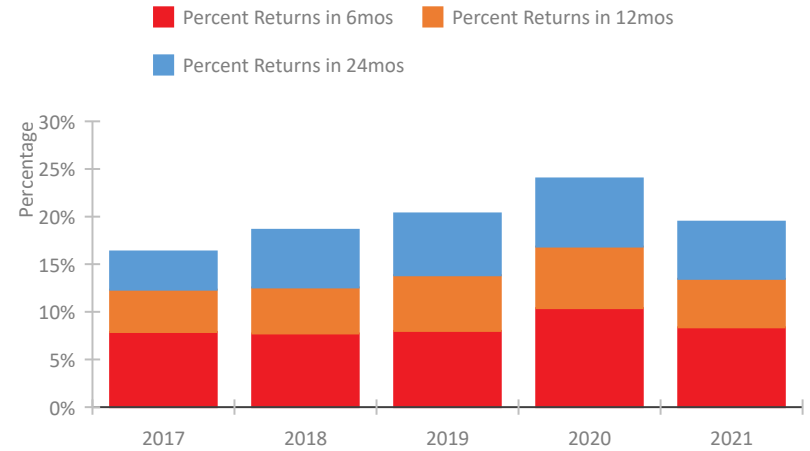
*In 2021, HUD gave communities the option to cancel or modify the unsheltered survey portion of their counts based on the potential risk of COVID-19 transmission associated with conducting an in-person survey. As a result, HUD has excluded the unsheltered population sub-totals and all unsheltered sub-population data for this reporting period. The user is cautioned that the unsheltered and total homeless counts reported here may be missing data.

CoC Performance Profile CA-500 San Jose/Santa Clara City & County CoC

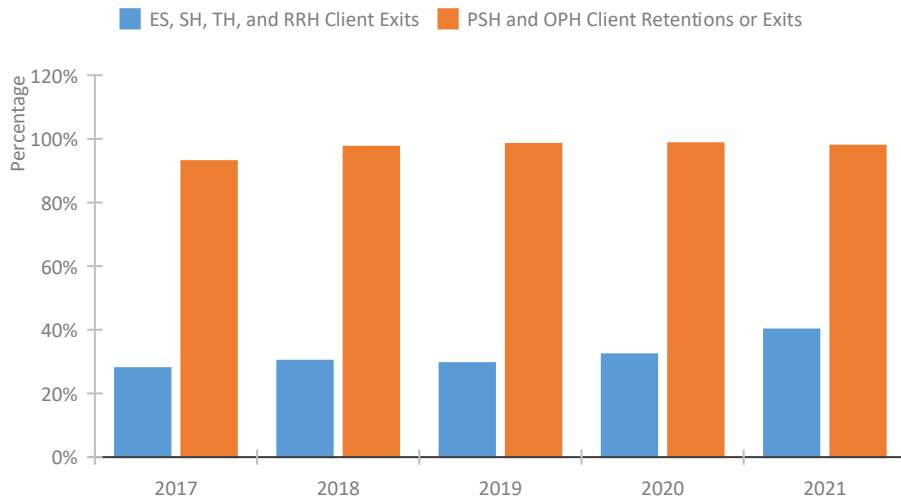
Length of Time Homeless



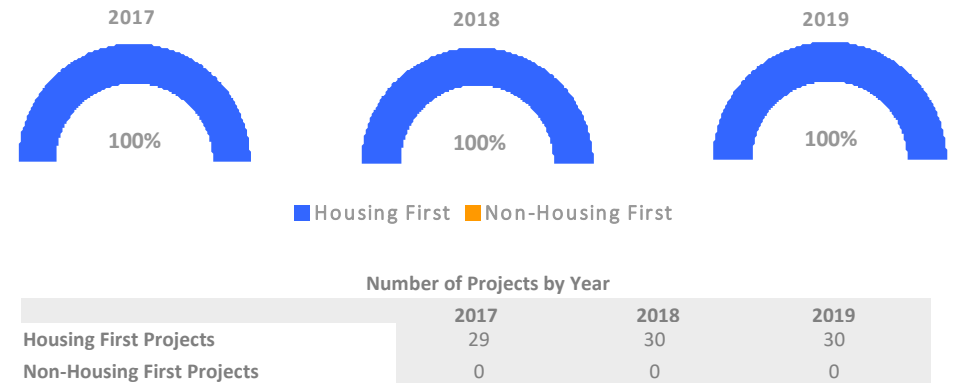
Returns to Homelessness Over Time



Exits to Permanent Housing by Program Type



Proportion of Housing First Projects by Year†



†2021 Data unavailable at the time of report publication. In 2020 HUD awarded renewal projects noncompetitively, therefore no new data was collected and Housing First data remains the same from 2019 to 2020.

Data Summary: CA-500 San Jose/Santa Clara City & County CoC

Point-In-Time Count Summary*

	2017	2018	2019	2020	2021	2020-21 Change	% Change
Number of Sheltered Persons in Families	779	691	678	560	651	91	16%
Number of Unsheltered Persons in Families	296	296	243	243	--	--	--
Number of Sheltered Individuals	1,167	1,115	1,106	1,123	1,650	527	47%
Number of Unsheltered Individuals	5,152	5,152	7,679	7,679	--	--	--
Total Homeless Persons	7,394	7,254	9,706	9,605	2,301	-7,304	-76%
Number of Sheltered Families	223	201	204	170	201	31	18%
Number of Unsheltered Families	71	71	65	65	--	--	--
Number of Total Families	294	272	269	235	201	-34	-14%
Sheltered Chronically Homeless Individuals	260	298	318	346	872	526	152%
Unsheltered Chronically Homeless Individuals	1,758	1,758	2,035	2,035	--	--	--
Total Chronically Homeless Individuals	2,018	2,056	2,353	2,381	872	-1,509	-63%
Sheltered Veterans	208	206	208	168	167	-1	-1%
Unsheltered Veterans	452	452	445	445	--	--	--
Total Veterans	660	658	653	613	167	-446	-73%
Sheltered Unaccompanied Youth (up to 24)	94	81	94	74	85	11	15%
Unsheltered Unaccompanied Youth (up to 24)	2,436	2,436	1,774	1,774	--	--	--
Total Unaccompanied Youth (up to 24)	2,530	2,517	1,868	1,848	85	-1,763	-95%

System Performance Measures Summary

	2017	2018	2019	2020	2021	2020-21 Change	% Change
Average Length of Time Homeless (days)	124	141	110	109	164	55	50.5%
Rate People Return to Homelessness in 6 Months	7.9%	7.7%	8.0%	10.4%	8.4%	-2%	N/A
Number of People who are Homeless for the First Time	4,713	5,075	4,954	3,400	4,386	986	29%
Rate People Exit from ES, SH, TH, and RRH to PH	27.9%	30.3%	29.5%	32.3%	40.1%	7.8%	N/A
Rate People in PSH and OPH Retain or Exit to PH	93.0%	97.5%	98.4%	98.6%	97.9%	-0.7%	N/A

Housing Inventory Count Summary

	2017	2018	2019	2020	2021	2020-21 Change	% Change
Emergency Shelter (ES)	654	746	900	1,069	1,438	369	35%
Safe Haven (SH)	--	20	20	20	20	0	0%
Transitional Housing (TH)	998	814	844	559	470	-89	-16%
Permanent Supportive Housing (PSH)	4,275	4,220	3,276	3,829	4,414	585	15%
Rapid Re-Housing (RRH)	532	834	1,284	1,486	1,529	43	3%
Other Permanent Housing (OPH)	--	--	--	126	126	0	0%

Award Summary

	2017	2018	2019	2020	2021	2020-21 Change	% Change
Continuum of Care (CoC)	\$21,891,818	\$26,061,937	\$29,506,119	\$31,678,024	\$31,236,117	(\$441,907)	-1%
Emergency Solutions Grants (ESG)	\$755,329	\$737,828	\$757,502	\$778,209	\$763,052	(\$15,157)	-2%
Youth Homelessness Demonstration Program (YHDP)	--	--	--	\$10,185,636	--	--	--

*In 2021, HUD gave communities the option to cancel or modify the unsheltered survey portion of their counts based on the potential risk of COVID-19 transmission associated with conducting an in-person survey. As a result, HUD has excluded the unsheltered population sub-totals and all unsheltered sub-population data for this reporting period. The user is cautioned that the unsheltered and total homeless counts reported here may be missing data.