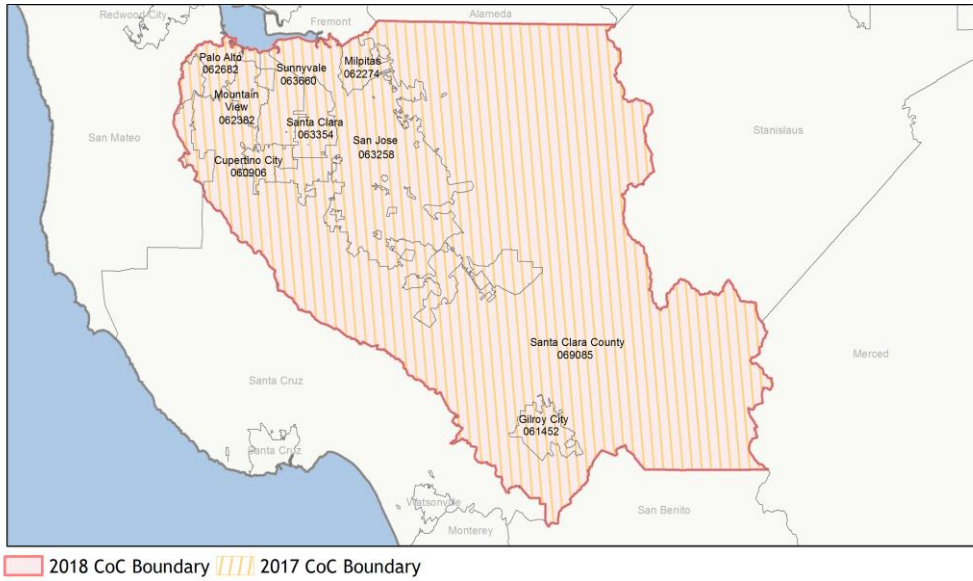
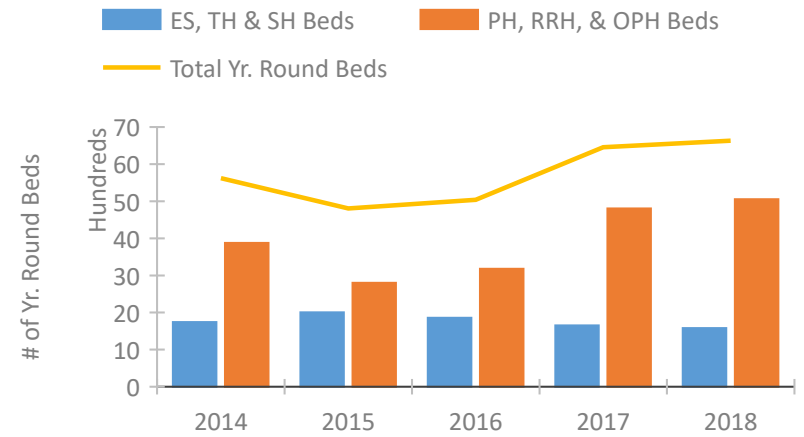


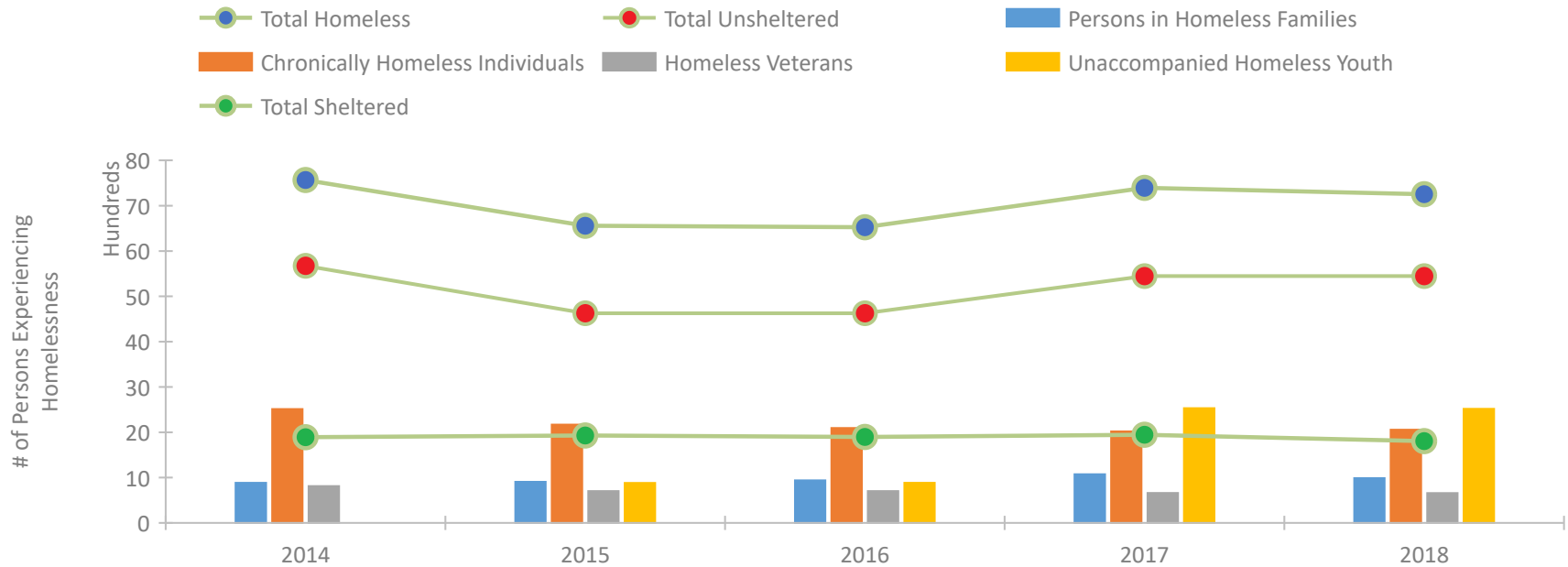
## CoC Performance Profile CA-500 San Jose/Santa Clara City & County CoC



### Housing Inventory Count by Program Type

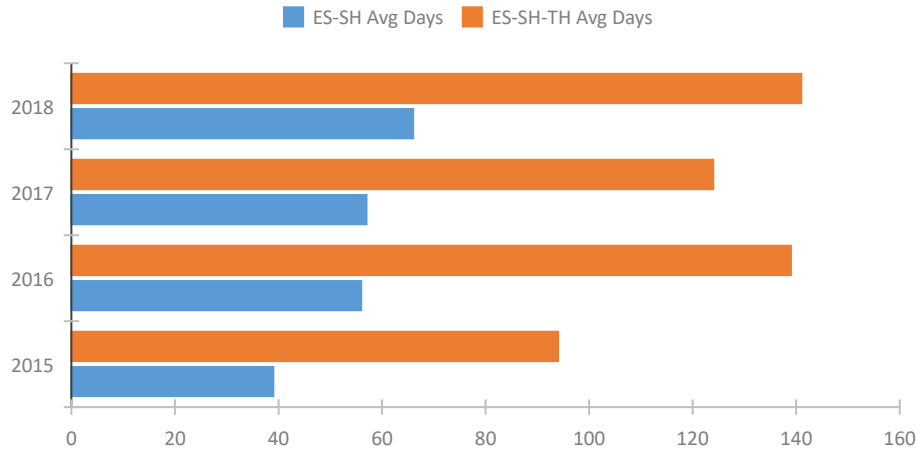


### Homeless Population – Point-in-Time (PIT) Count

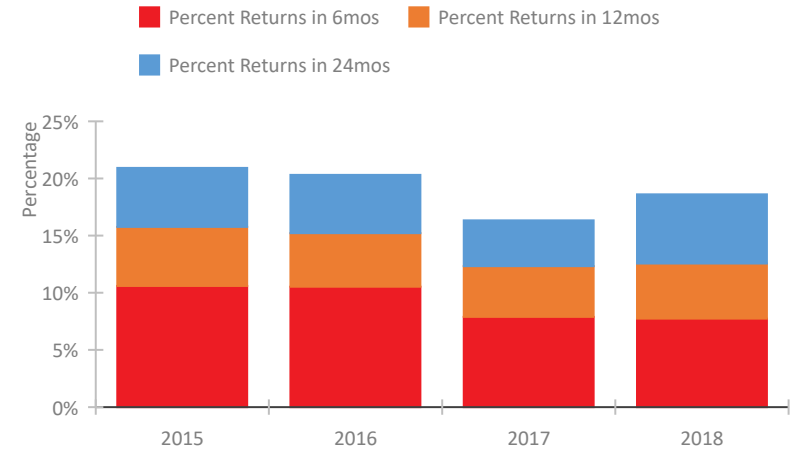


## CoC Performance Profile CA-500 San Jose/Santa Clara City & County CoC

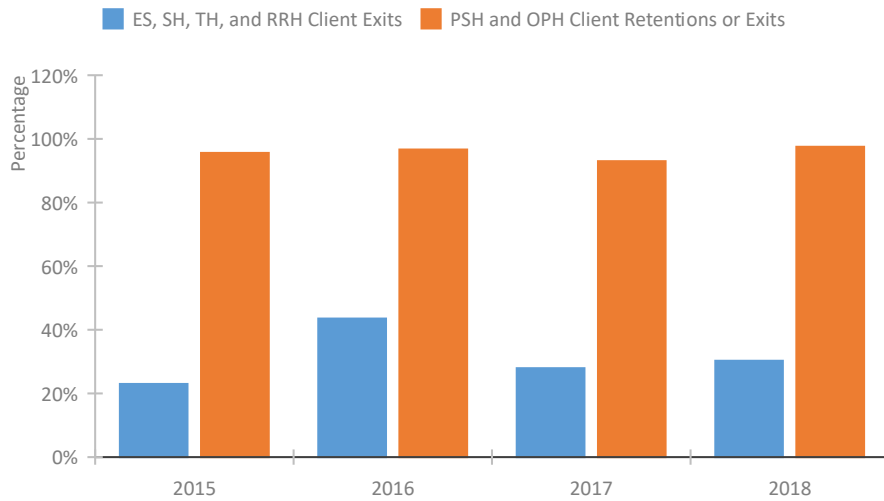
### Length of Time Homeless



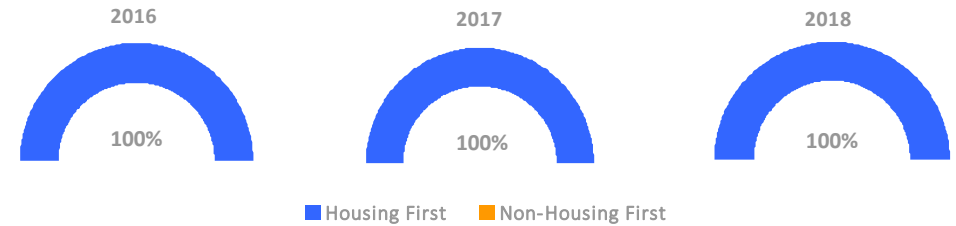
### Returns to Homelessness Over Time



### Exits to Permanent Housing by Program Type



### Proportion of Housing First Projects by Year



### Number of Projects by Year

	2016	2017	2018
Housing First Projects	36	29	30
Non-Housing First Projects	0	0	0

## Data Summary: CA-500 San Jose/Santa Clara City & County CoC

### Point-In-Time Count Summary

	2014	2015	2016	2017	2018	2017-18 Change	% Change
Number of Sheltered Persons in Families	830	845	876	779	691	-88	-11%
Number of Unsheltered Persons in Families	56	63	63	296	296	0	0%
Number of Sheltered Individuals	1,063	1,084	1,021	1,167	1,115	-52	-4%
Number of Unsheltered Individuals	5,618	4,564	4,564	5,152	5,152	0	0%
<b>Total Homeless Persons</b>	<b>7,567</b>	<b>6,556</b>	<b>6,524</b>	<b>7,394</b>	<b>7,254</b>	<b>-140</b>	<b>-2%</b>
Number of Sheltered Families	251	249	259	223	201	-22	-10%
Number of Unsheltered Families	17	17	17	71	71	0	0%
<b>Number of Total Families</b>	<b>268</b>	<b>266</b>	<b>276</b>	<b>294</b>	<b>272</b>	<b>-22</b>	<b>-7%</b>
Sheltered Chronically Homeless Individuals	263	184	110	260	298	38	15%
Unsheltered Chronically Homeless Individuals	2,250	1,985	1,985	1,758	1,758	0	0%
<b>Total Chronically Homeless Individuals</b>	<b>2,513</b>	<b>2,169</b>	<b>2,095</b>	<b>2,018</b>	<b>2,056</b>	<b>38</b>	<b>2%</b>
Sheltered Veterans	234	257	255	208	206	-2	-1%
Unsheltered Veterans	579	446	446	452	452	0	0%
<b>Total Veterans</b>	<b>813</b>	<b>703</b>	<b>701</b>	<b>660</b>	<b>658</b>	<b>-2</b>	<b>0%</b>
Sheltered Unaccompanied Youth (up to 24)	--	102	105	94	81	-13	-14%
Unsheltered Unaccompanied Youth (up to 24)	--	780	780	2,436	2,436	0	0%
<b>Total Unaccompanied Youth (up to 24)</b>	<b>--</b>	<b>882</b>	<b>885</b>	<b>2,530</b>	<b>2,517</b>	<b>-13</b>	<b>-1%</b>

### System Performance Measures Summary

	2014	2015	2016	2017	2018	2017-18 Change	% Change
Average Length of Time Homeless (days)	N/A	94	139	124	141	17	13.7%
Rate People Return to Homelessness in 6 Months	N/A	10.6%	10.5%	7.9%	7.7%	-0.2%	N/A
Number of People who are Homeless for the First Time	N/A	4297	3572	4713	5075	362	7.7%
Rate People Exit from ES, SH, TH, and RRH to PH	N/A	23.0%	43.5%	27.9%	30.3%	2.4%	N/A
Rate People in PSH and OPH Retain or Exit to PH	N/A	95.6%	96.7%	93.0%	97.5%	4.5%	N/A

### Housing Inventory Count Summary

	2014	2015	2016	2017	2018	2017-18 Change	% Change
Emergency Shelter (ES)	593	622	623	654	746	92	14%
Safe Haven (SH)	10	10	10	--	20	--	--
Transitional Housing (TH)	1,141	1,374	1,226	998	814	-184	-18%
Permanent Supportive Housing (PSH)	3,683	2,794	2,822	4,275	4,220	-55	-1%
Rapid Re-Housing (RRH)	194	6	358	532	834	302	57%

### Award Summary

	2014	2015	2016	2017	2018	2017-18 Change	% Change
<b>Continuum of Care (CoC)</b>	\$15,896,617	\$20,204,762	\$20,015,353	\$21,891,818	\$26,061,937	\$4,170,119	19%
<b>Emergency Solutions Grants (ESG)</b>	\$670,964	\$725,731	\$743,498	\$755,329	\$737,828	(\$17,501)	-2%