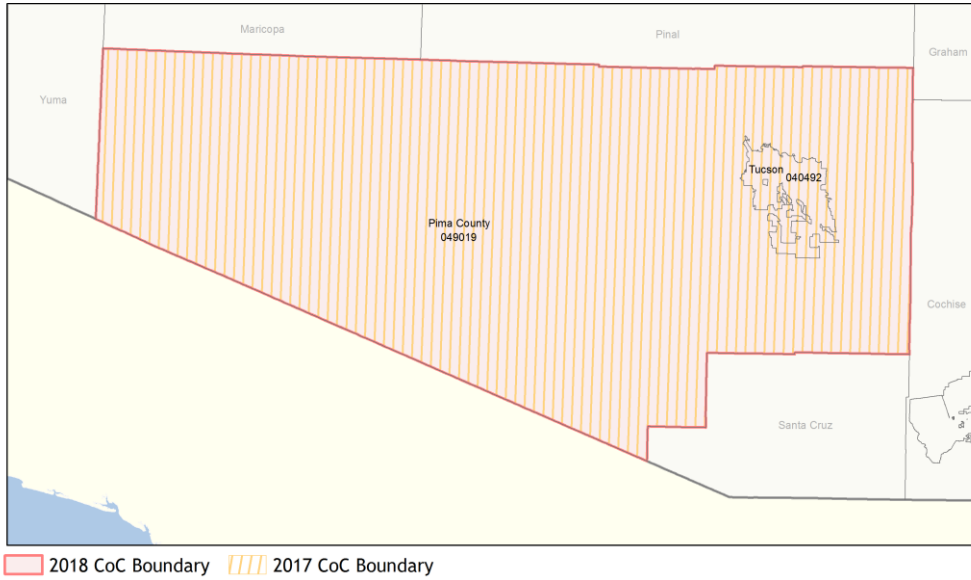
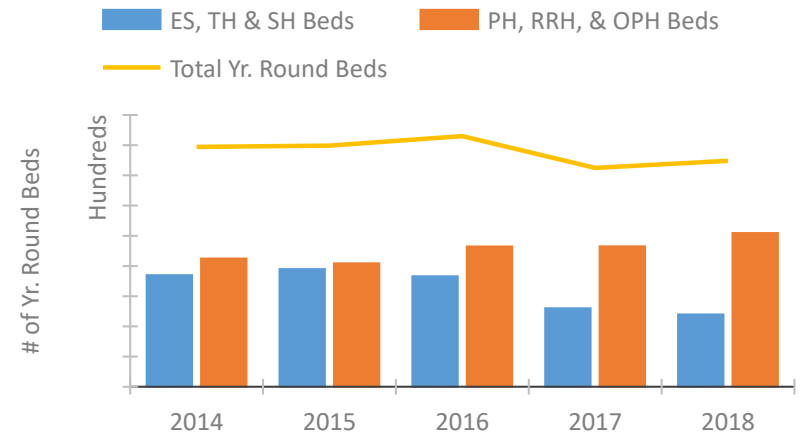


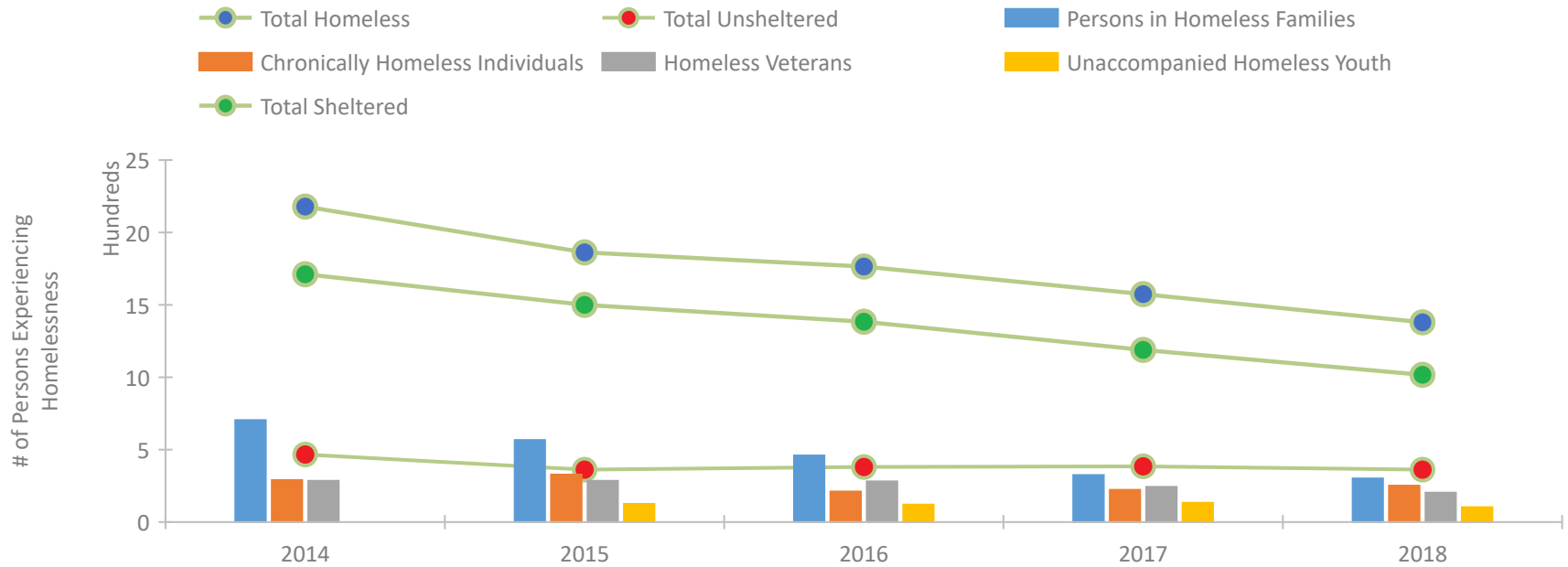
## CoC Performance Profile AZ-501 Tucson/Pima County CoC



### Housing Inventory Count by Program Type

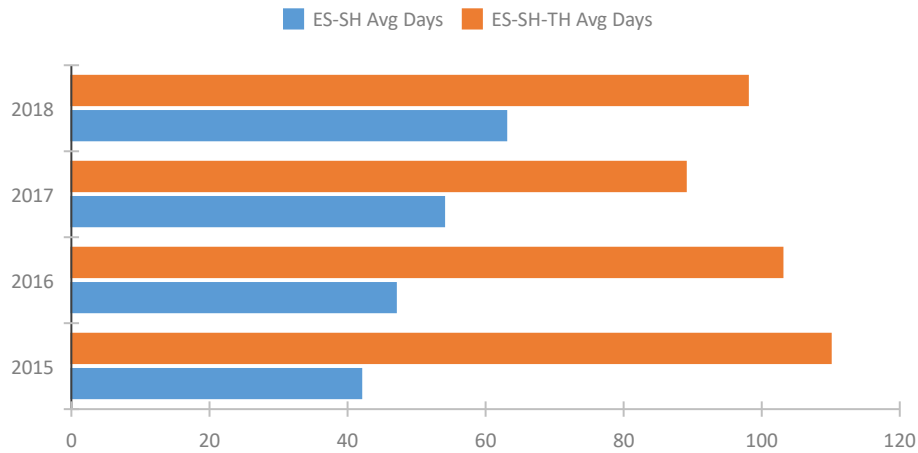


### Homeless Population – Point-in-Time (PIT) Count

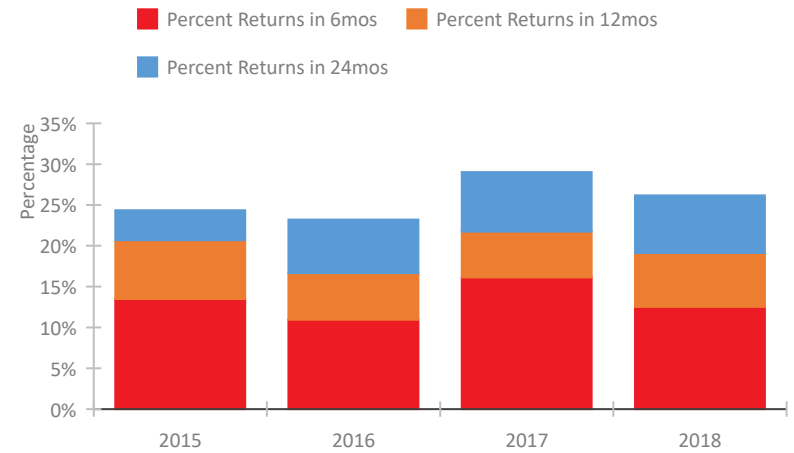


## CoC Performance Profile AZ-501 Tucson/Pima County CoC

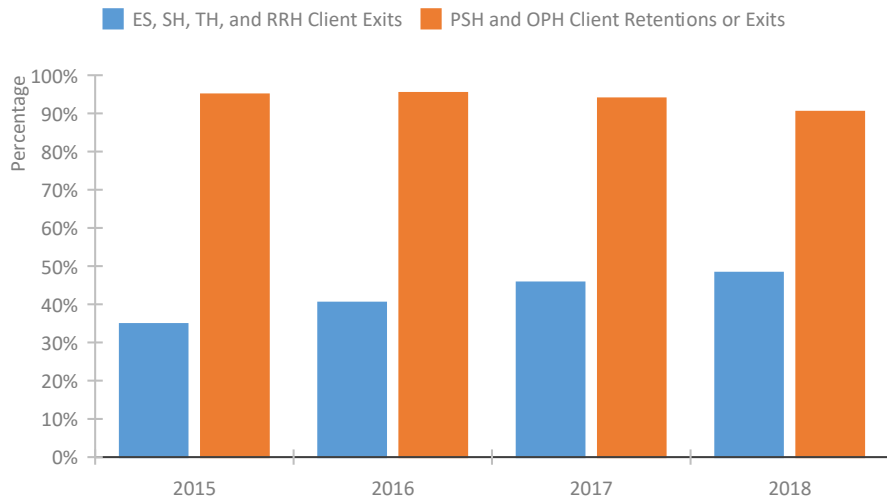
### Length of Time Homeless



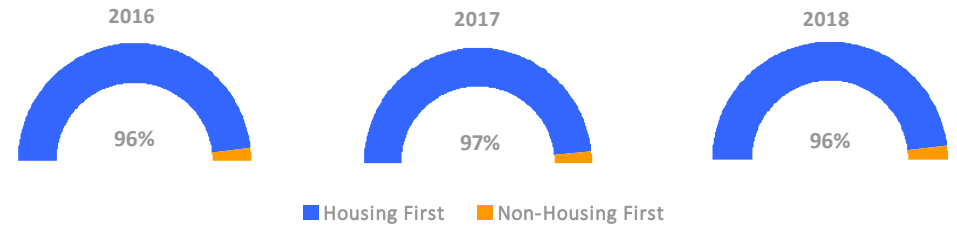
### Returns to Homelessness Over Time



### Exits to Permanent Housing by Program Type



### Proportion of Housing First Projects by Year



#### Number of Projects by Year

|                            | 2016 | 2017 | 2018 |
|----------------------------|------|------|------|
| Housing First Projects     | 27   | 28   | 27   |
| Non-Housing First Projects | 1    | 1    | 1    |

## Data Summary: AZ-501 Tucson/Pima County CoC

### Point-In-Time Count Summary

|   | 2014         | 2015         | 2016         | 2017         | 2018         | 2017-18 Change | % Change    |
|---|--------------|--------------|--------------|--------------|--------------|----------------|-------------|
| Number of Sheltered Persons in Families       | 663          | 549          | 458          | 325          | 297          | -28            | -9%         |
| Number of Unsheltered Persons in Families     | 41           | 18           | 2            | 0            | 4            | 4              | 100%        |
| Number of Sheltered Individuals               | 1,049        | 951          | 926          | 864          | 720          | -144           | -17%        |
| Number of Unsheltered Individuals             | 426          | 345          | 379          | 385          | 359          | -26            | -7%         |
| <b>Total Homeless Persons</b>                 | <b>2,179</b> | <b>1,863</b> | <b>1,765</b> | <b>1,574</b> | <b>1,380</b> | <b>-194</b>    | <b>-12%</b> |
| Number of Sheltered Families                  | 206          | 173          | 138          | 96           | 102          | 6              | 6%          |
| Number of Unsheltered Families                | 8            | 6            | 1            | 0            | 2            | 2              | 100%        |
| <b>Number of Total Families</b>               | <b>214</b>   | <b>179</b>   | <b>139</b>   | <b>96</b>    | <b>104</b>   | <b>8</b>       | <b>8%</b>   |
| Sheltered Chronically Homeless Individuals    | 126          | 92           | 91           | 167          | 160          | -7             | -4%         |
| Unsheltered Chronically Homeless Individuals  | 164          | 236          | 120          | 56           | 91           | 35             | 62%         |
| <b>Total Chronically Homeless Individuals</b> | <b>290</b>   | <b>328</b>   | <b>211</b>   | <b>223</b>   | <b>251</b>   | <b>28</b>      | <b>13%</b>  |
| Sheltered Veterans                            | 235          | 246          | 232          | 187          | 158          | -29            | -16%        |
| Unsheltered Veterans                          | 50           | 39           | 49           | 56           | 45           | -11            | -20%        |
| <b>Total Veterans</b>                         | <b>285</b>   | <b>285</b>   | <b>281</b>   | <b>243</b>   | <b>203</b>   | <b>-40</b>     | <b>-16%</b> |
| Sheltered Unaccompanied Youth (up to 24)      | --           | 103          | 107          | 88           | 67           | -21            | -24%        |
| Unsheltered Unaccompanied Youth (up to 24)    | --           | 23           | 14           | 45           | 36           | -9             | -20%        |
| <b>Total Unaccompanied Youth (up to 24)</b>   | <b>--</b>    | <b>126</b>   | <b>121</b>   | <b>133</b>   | <b>103</b>   | <b>-30</b>     | <b>-23%</b> |

### System Performance Measures Summary

|  | 2014 | 2015  | 2016  | 2017  | 2018  | 2017-18 Change | % Change |
|--|------|-------|-------|-------|-------|----------------|----------|
| Average Length of Time Homeless (days)               | N/A  | 110   | 103   | 89    | 98    | 9              | 10.1%    |
| Rate People Return to Homelessness in 6 Months       | N/A  | 13.5% | 10.9% | 16.1% | 12.5% | -3.6%          | N/A      |
| Number of People who are Homeless for the First Time | N/A  | 3547  | 4119  | 3484  | 3388  | -96            | -2.8%    |
| Rate People Exit from ES, SH, TH, and RRH to PH      | N/A  | 34.9% | 40.4% | 45.7% | 48.2% | 2.5%           | N/A      |
| Rate People in PSH and OPH Retain or Exit to PH      | N/A  | 95.0% | 95.4% | 93.9% | 90.4% | -3.5%          | N/A      |

### Housing Inventory Count Summary

|                                    | 2014  | 2015  | 2016  | 2017  | 2018  | 2017-18 Change | % Change |
|------------------------------------|-------|-------|-------|-------|-------|----------------|----------|
| Emergency Shelter (ES)             | 704   | 676   | 782   | 768   | 760   | -8             | -1%      |
| Safe Haven (SH)                    | 15    | 15    | 15    | 15    | 15    | 0              | 0%       |
| Transitional Housing (TH)          | 1,128 | 1,258 | 1,032 | 516   | 421   | -95            | -18%     |
| Permanent Supportive Housing (PSH) | 1,080 | 1,753 | 1,798 | 2,024 | 1,853 | -171           | -8%      |
| Rapid Re-Housing (RRH)             | 407   | 291   | 525   | 301   | 693   | 392            | 130%     |

### Award Summary

|  | 2014        | 2015        | 2016        | 2017        | 2018        | 2017-18 Change | % Change |
|--|-------------|-------------|-------------|-------------|-------------|----------------|----------|
| <b>Continuum of Care (CoC)</b>                         | \$8,634,226 | \$8,428,109 | \$8,414,896 | \$8,640,835 | \$8,584,348 | (\$56,487)     | -1%      |
| <b>Emergency Solutions Grants (ESG)</b>                | \$629,467   | \$678,572   | \$694,103   | \$1,236,408 | \$681,954   | (\$554,454)    | -45%     |
| <b>Youth Homelessness Demonstration Program (YHDP)</b> | N/A         | N/A         | --          | --          | \$4,558,069 | --             | --       |