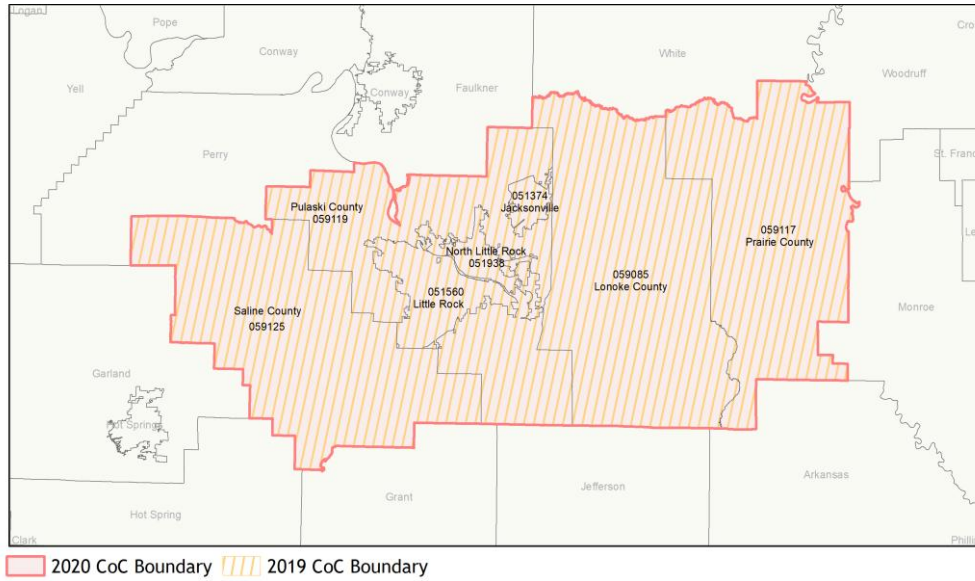
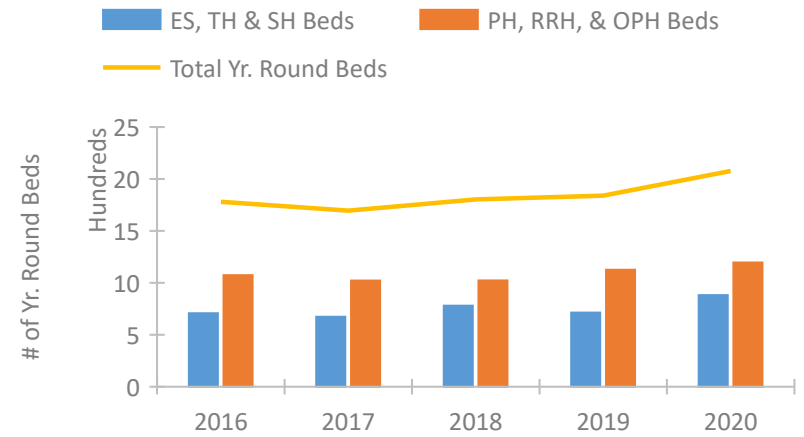


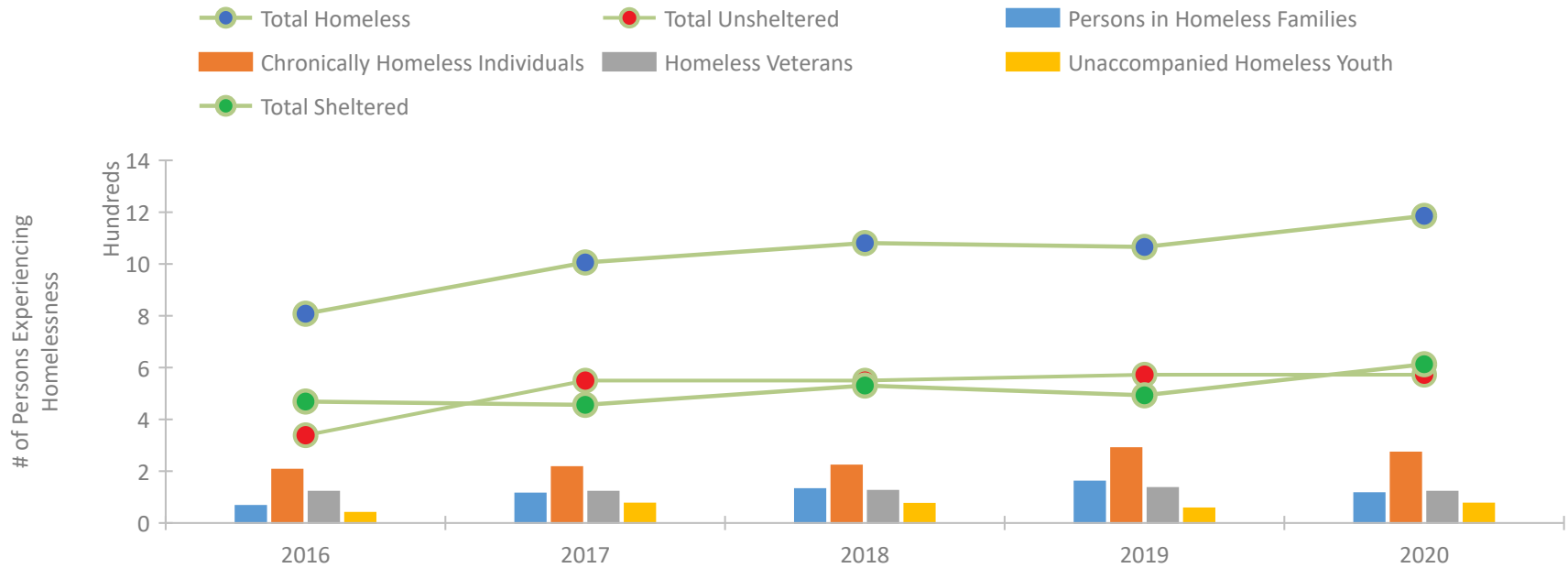
CoC Performance Profile AR-500 Little Rock/Central Arkansas CoC



Housing Inventory Count by Program Type

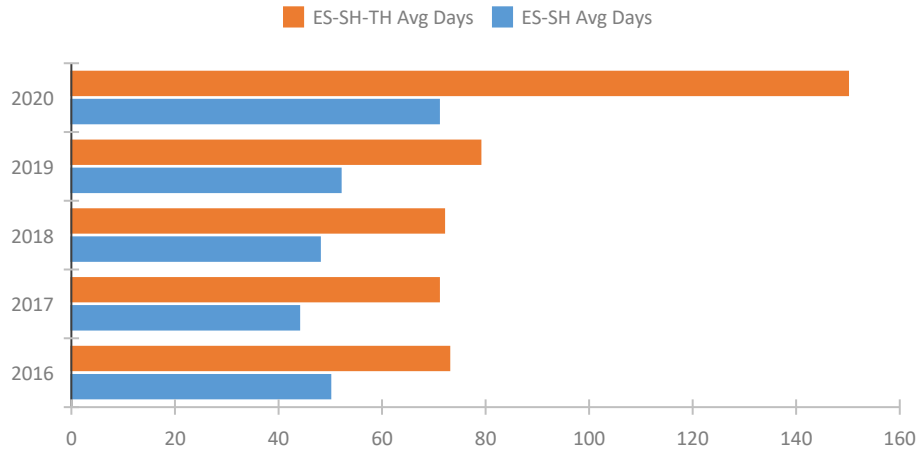


Homeless Population – Point-in-Time (PIT) Count

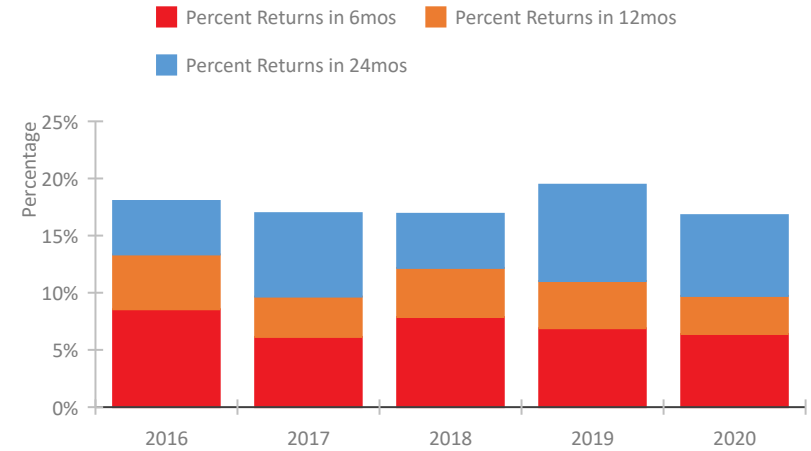


CoC Performance Profile AR-500 Little Rock/Central Arkansas CoC

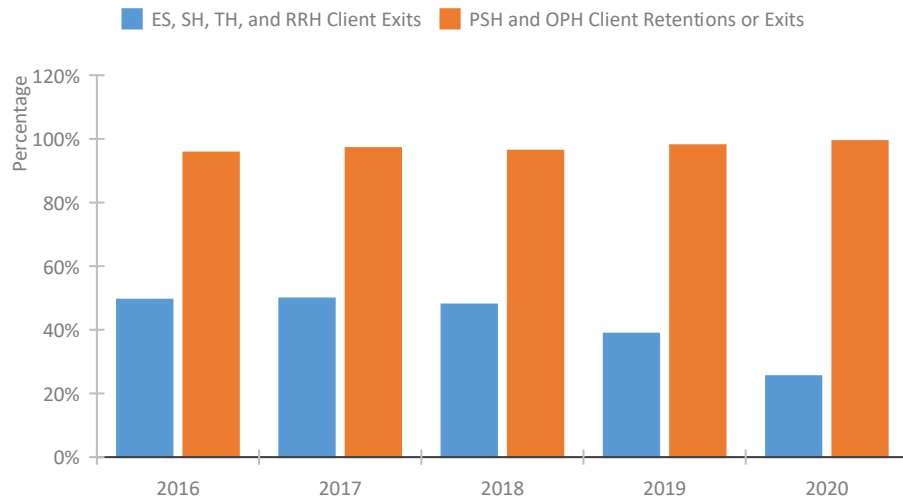
Length of Time Homeless



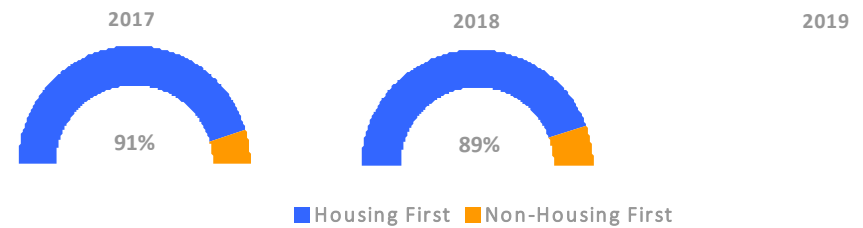
Returns to Homelessness Over Time



Exits to Permanent Housing by Program Type



Proportion of Housing First Projects by Year*



*In 2020 HUD awarded renewal projects noncompetitively, therefore no new data was collected and Housing First data remains the same from 2019 to 2020.

Data Summary: AR-500 Little Rock/Central Arkansas CoC

Point-In-Time Count Summary

	2016	2017	2018	2019	2020	2019-20 Change	% Change
Number of Sheltered Persons in Families	61	82	99	138	93	-45	-33%
Number of Unsheltered Persons in Families	5	32	32	22	22	0	-0%
Number of Sheltered Individuals	408	374	432	355	520	165	46%
Number of Unsheltered Individuals	334	518	518	551	551	0	-0%
Total Homeless Persons	808	1,006	1,081	1,066	1,186	120	11%
Number of Sheltered Families	20	28	35	44	27	-17	-39%
Number of Unsheltered Families	2	12	12	6	6	0	-0%
Number of Total Families	22	40	47	50	33	-17	-34%
Sheltered Chronically Homeless Individuals	66	76	82	69	52	-17	-25%
Unsheltered Chronically Homeless Individuals	140	140	140	220	220	0	-0%
Total Chronically Homeless Individuals	206	216	222	289	272	-17	-6%
Sheltered Veterans	84	67	70	79	65	-14	-18%
Unsheltered Veterans	37	54	54	56	56	0	-0%
Total Veterans	121	121	124	135	121	-14	-10%
Sheltered Unaccompanied Youth (up to 24)	28	37	36	31	50	19	61%
Unsheltered Unaccompanied Youth (up to 24)	11	38	38	25	25	0	-0%
Total Unaccompanied Youth (up to 24)	39	75	74	56	75	19	34%

System Performance Measures Summary

	2016	2017	2018	2018	2020	2019-20 Change	% Change
Average Length of Time Homeless (days)	73	71	72	79	150	71	89.9%
Rate People Return to Homelessness in 6 Months	8.6%	6.1%	7.9%	6.9%	6.4%	-0.5%	N/A
Number of People who are Homeless for the First Time	1,274	1,395	1,283	1,108	742	-366	-33%
Rate People Exit from ES, SH, TH, and RRH to PH	49.4%	49.8%	47.9%	38.8%	25.4%	-13.4%	N/A
Rate People in PSH and OPH Retain or Exit to PH	95.7%	97.1%	96.3%	98.0%	99.3%	1.3%	N/A

Housing Inventory Count Summary

	2016	2017	2018	2019	2020	2019-20 Change	% Change
Emergency Shelter (ES)	439	471	512	476	641	165	35%
Transitional Housing (TH)	268	203	269	238	241	3	1%
Permanent Supportive Housing (PSH)	930	931	893	964	959	-5	-1%
Rapid Re-Housing (RRH)	107	68	122	162	237	75	46%

Award Summary

	2016	2017	2018	2019	2020	2019-20 Change	% Change
Continuum of Care (CoC)	\$3,213,437	\$3,171,571	\$3,142,641	\$3,027,153	\$3,152,984	\$125,831	4%
ESG (AR state recipient - no direct funding)	\$2,081,178	\$2,383,028	\$2,071,846	\$2,162,085	\$2,264,323	\$102,238	5%