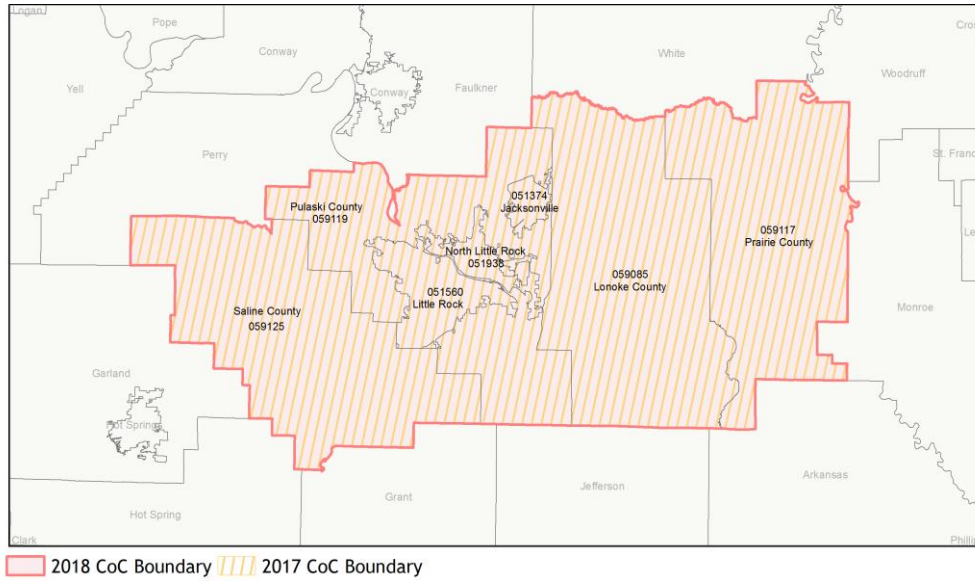
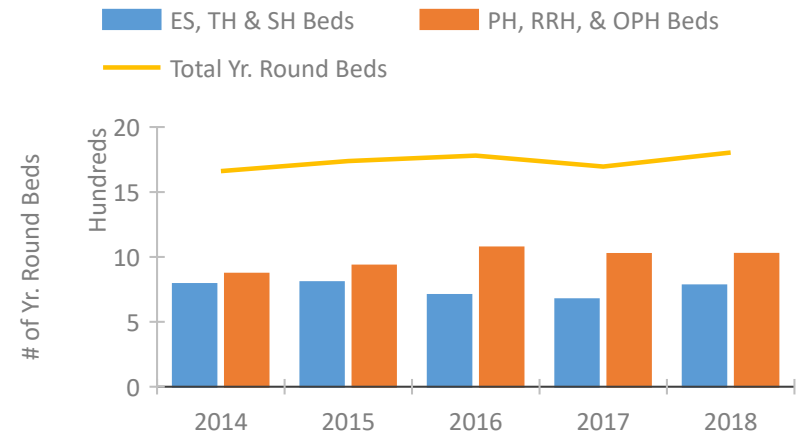


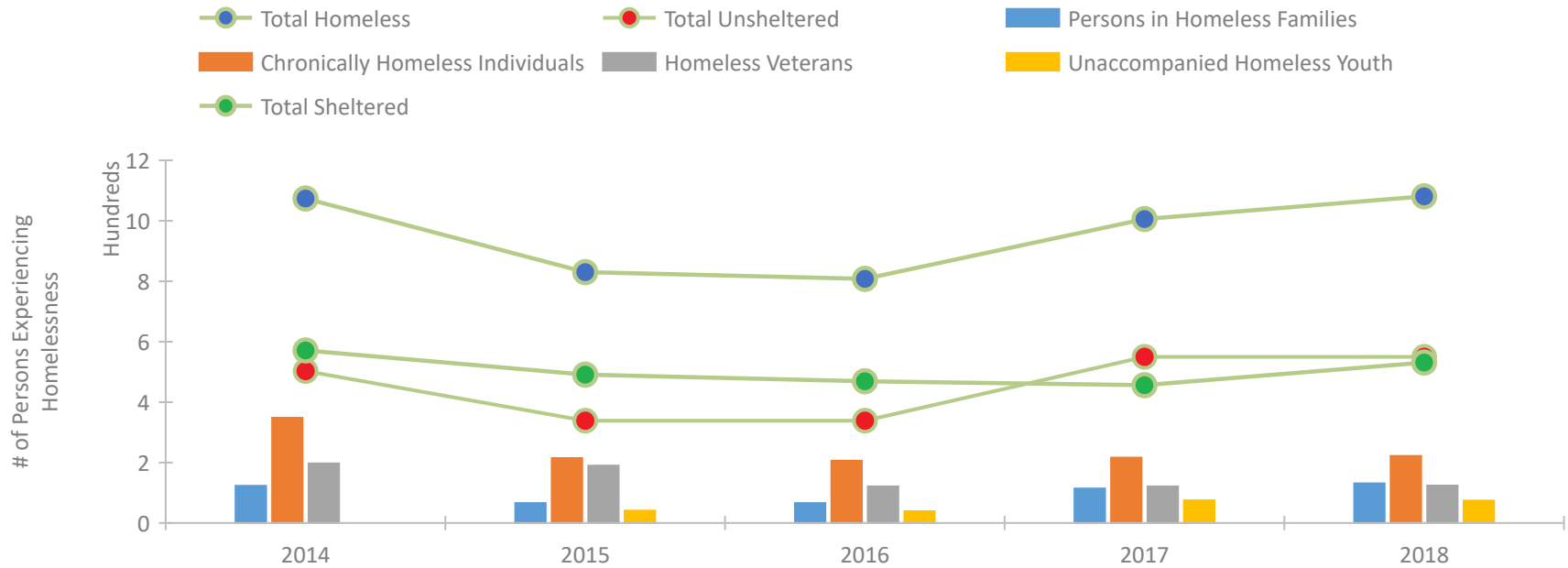
CoC Performance Profile AR-500 Little Rock/Central Arkansas CoC



Housing Inventory Count by Program Type

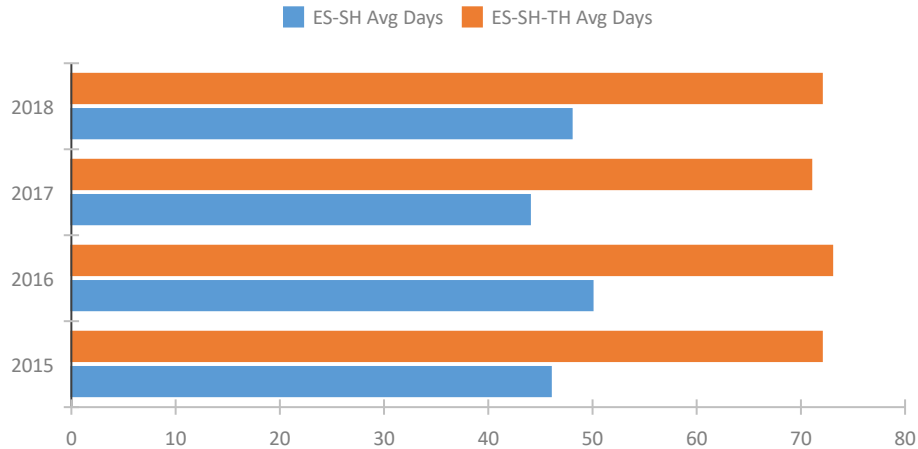


Homeless Population – Point-in-Time (PIT) Count

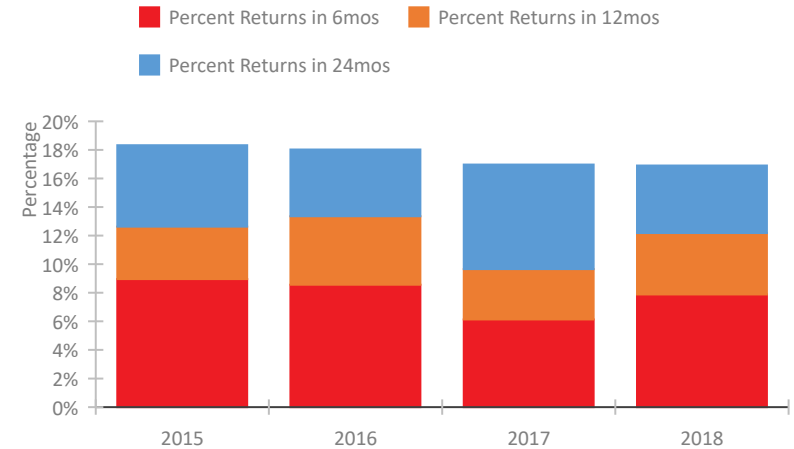


CoC Performance Profile AR-500 Little Rock/Central Arkansas CoC

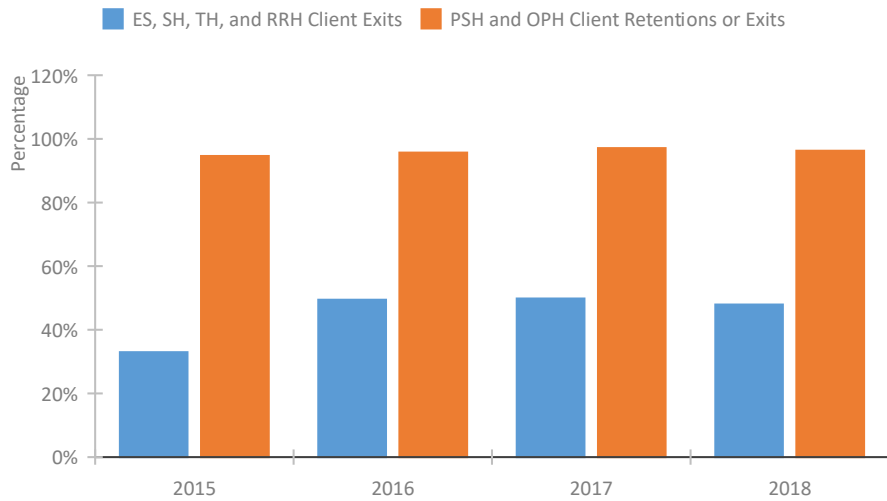
Length of Time Homeless



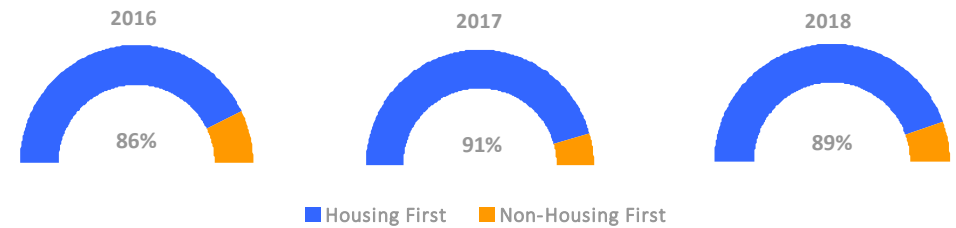
Returns to Homelessness Over Time



Exits to Permanent Housing by Program Type



Proportion of Housing First Projects by Year



Number of Projects by Year

	2016	2017	2018
Housing First Projects	12	10	8
Non-Housing First Projects	2	1	1

Data Summary: AR-500 Little Rock/Central Arkansas CoC

Point-In-Time Count Summary

	2014	2015	2016	2017	2018	2017-18 Change	% Change
Number of Sheltered Persons in Families	123	61	61	82	99	17	21%
Number of Unsheltered Persons in Families	0	5	5	32	32	0	0%
Number of Sheltered Individuals	448	430	408	374	432	58	16%
Number of Unsheltered Individuals	503	334	334	518	518	0	0%
Total Homeless Persons	1,074	830	808	1,006	1,081	75	7%
Number of Sheltered Families	48	23	20	28	35	7	25%
Number of Unsheltered Families	0	2	2	12	12	0	0%
Number of Total Families	48	25	22	40	47	7	18%
Sheltered Chronically Homeless Individuals	44	75	66	76	82	6	8%
Unsheltered Chronically Homeless Individuals	304	140	140	140	140	0	0%
Total Chronically Homeless Individuals	348	215	206	216	222	6	3%
Sheltered Veterans	141	153	84	67	70	3	4%
Unsheltered Veterans	56	37	37	54	54	0	0%
Total Veterans	197	190	121	121	124	3	2%
Sheltered Unaccompanied Youth (up to 24)	--	30	28	37	36	-1	-3%
Unsheltered Unaccompanied Youth (up to 24)	--	11	11	38	38	0	0%
Total Unaccompanied Youth (up to 24)	--	41	39	75	74	-1	-1%

System Performance Measures Summary

	2014	2015	2016	2017	2018	2017-18 Change	% Change
Average Length of Time Homeless (days)	N/A	72	73	71	72	1	1.4%
Rate People Return to Homelessness in 6 Months	N/A	9.0%	8.6%	6.1%	7.9%	1.7%	N/A
Number of People who are Homeless for the First Time	N/A	1414	1274	1395	1283	-112	-8%
Rate People Exit from ES, SH, TH, and RRH to PH	N/A	32.9%	49.4%	49.8%	47.9%	-1.9%	N/A
Rate People in PSH and OPH Retain or Exit to PH	N/A	94.6%	95.7%	97.1%	96.3%	-0.9%	N/A

Housing Inventory Count Summary

	2014	2015	2016	2017	2018	2017-18 Change	% Change
Emergency Shelter (ES)	404	464	439	471	512	41	9%
Transitional Housing (TH)	387	341	268	203	269	66	33%
Permanent Supportive Housing (PSH)	765	555	930	931	893	-38	-4%
Rapid Re-Housing (RRH)	83	50	107	68	122	54	79%
Other Permanent Housing (OPH)	22	328	36	23	8	-15	-65%

Award Summary

	2014	2015	2016	2017	2018	2017-18 Change	% Change
Continuum of Care (CoC)	\$4,016,037	\$3,359,964	\$3,213,437	\$3,171,571	\$3,142,641	(\$28,930)	-1%
ESG (AR state recipient - no direct funding)	\$1,967,063	\$2,119,435	\$2,081,178	\$2,383,028	\$2,071,846	(\$311,182)	-13%