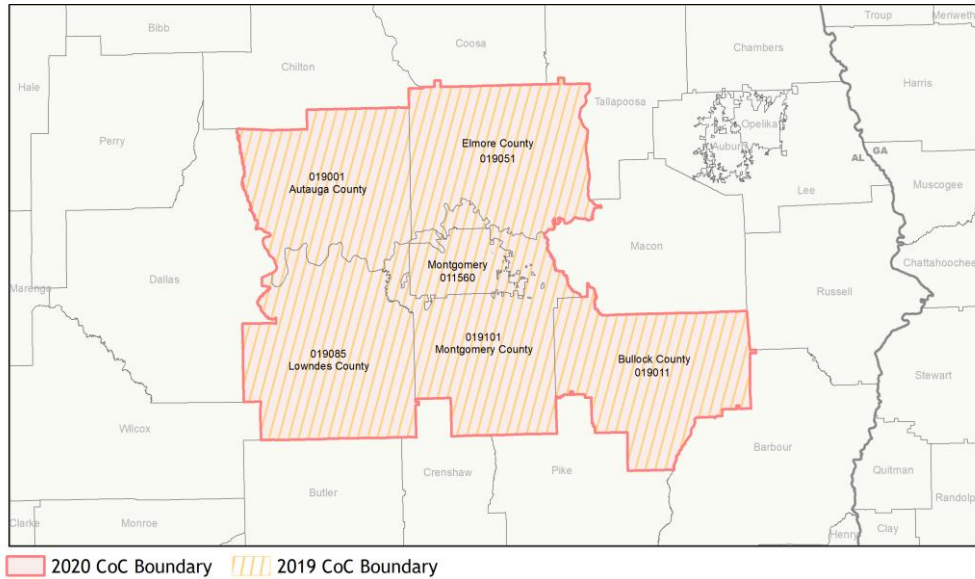
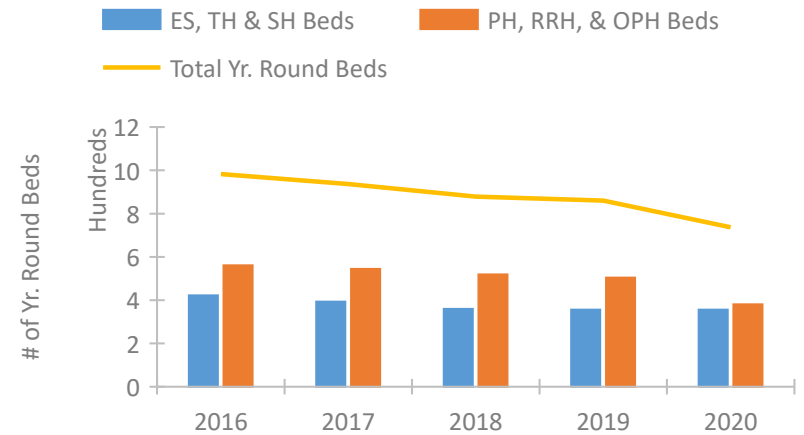


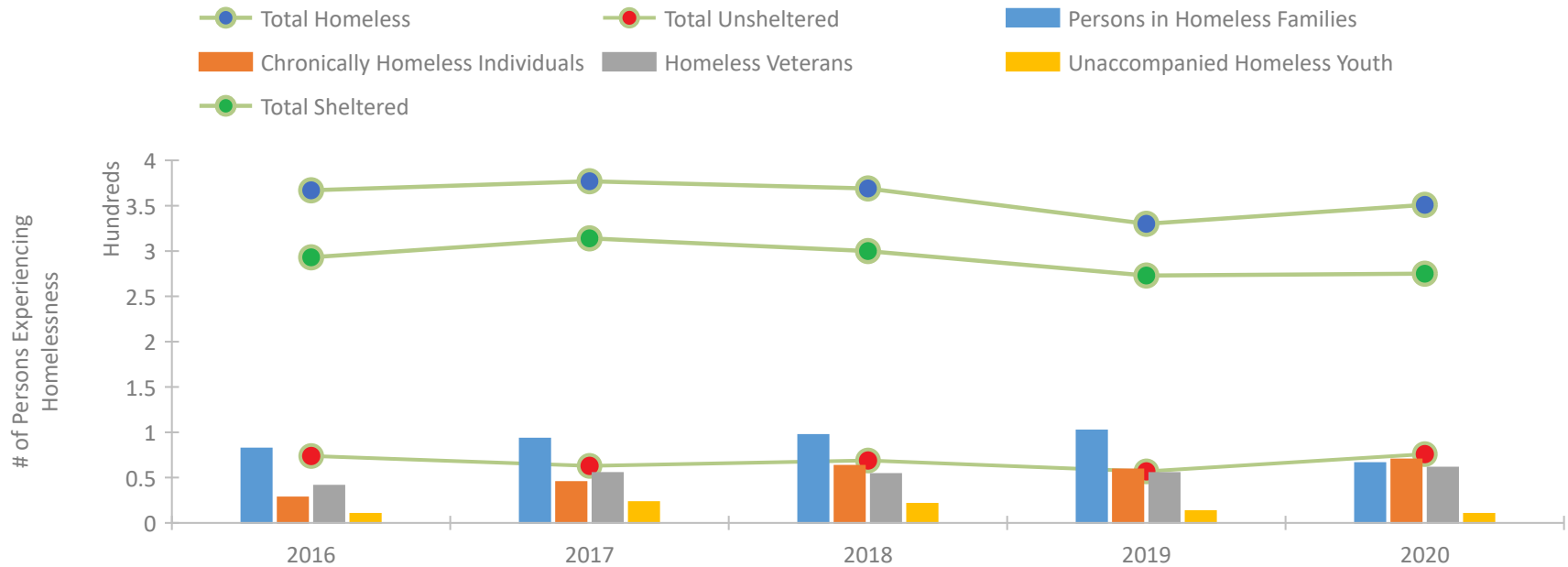
CoC Performance Profile AL-504 Montgomery City & County CoC



Housing Inventory Count by Program Type

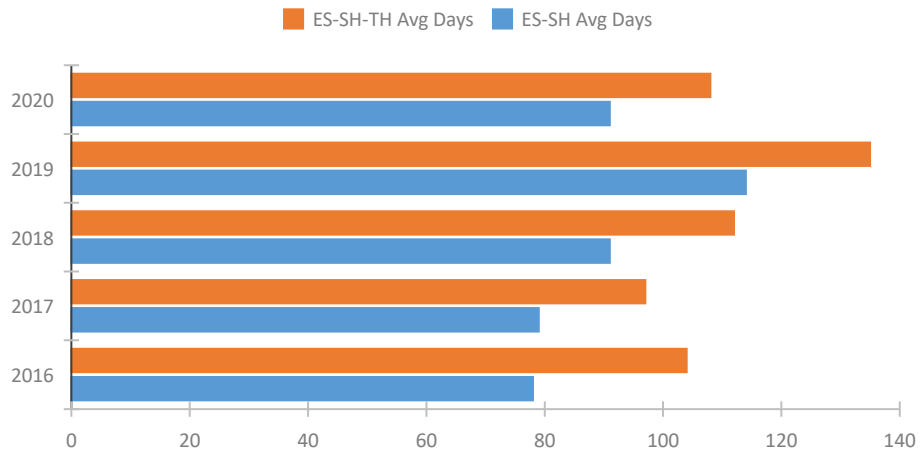


Homeless Population – Point-in-Time (PIT) Count

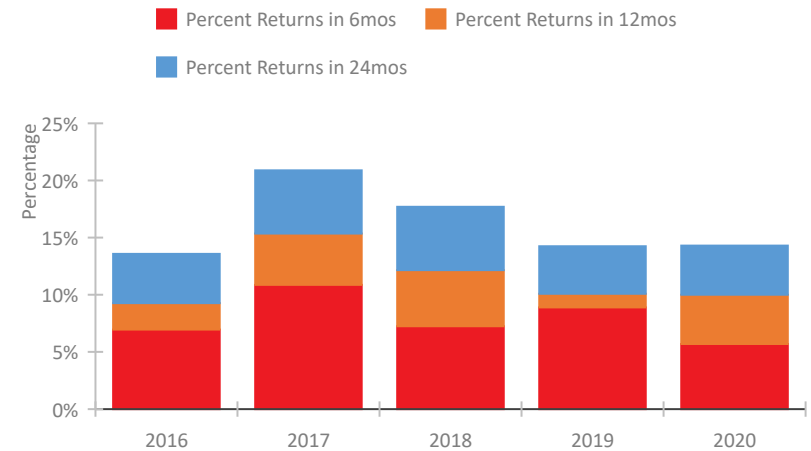


CoC Performance Profile AL-504 Montgomery City & County CoC

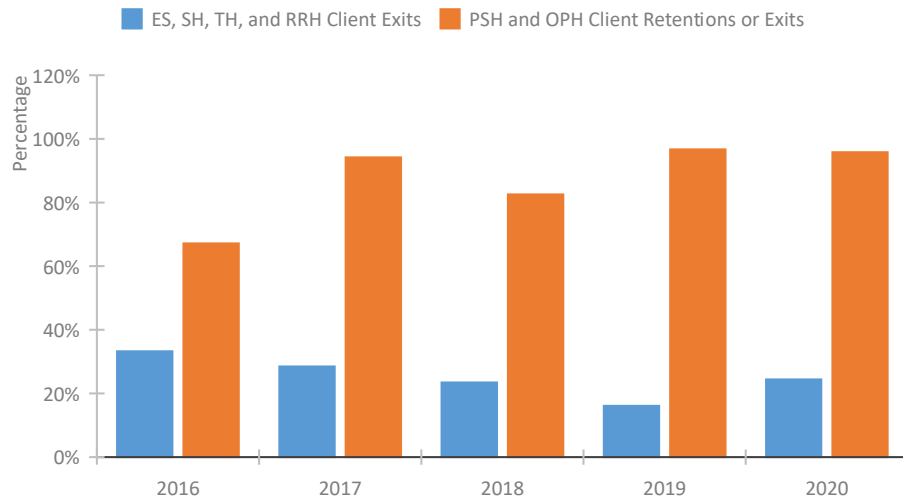
Length of Time Homeless



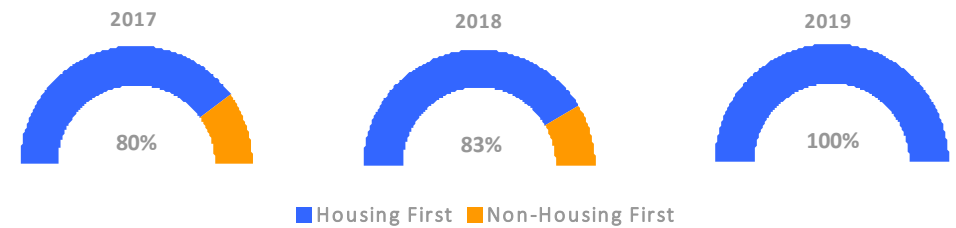
Returns to Homelessness Over Time



Exits to Permanent Housing by Program Type



Proportion of Housing First Projects by Year*



Number of Projects by Year

	2017	2018	2019
Housing First Projects	4	5	5
Non-Housing First Projects	1	1	0

*In 2020 HUD awarded renewal projects noncompetitively, therefore no new data was collected and Housing First data remains the same from 2019 to 2020.

Data Summary: AL-504 Montgomery City & County CoC

Point-In-Time Count Summary

	2016	2017	2018	2019	2020	2019-20 Change	% Change
Number of Sheltered Persons in Families	79	89	97	102	66	-36	-35%
Number of Unsheltered Persons in Families	3	4	0	0	0	0	--
Number of Sheltered Individuals	214	225	203	171	209	38	22%
Number of Unsheltered Individuals	71	59	69	57	76	19	33%
Total Homeless Persons	367	377	369	330	351	21	6%
Number of Sheltered Families	20	29	28	25	21	-4	-16%
Number of Unsheltered Families	1	1	0	0	0	0	--
Number of Total Families	21	30	28	25	21	-4	-16%
Sheltered Chronically Homeless Individuals	18	39	41	40	54	14	35%
Unsheltered Chronically Homeless Individuals	10	6	22	19	16	-3	-16%
Total Chronically Homeless Individuals	28	45	63	59	70	11	19%
Sheltered Veterans	40	53	48	44	50	6	14%
Unsheltered Veterans	1	2	6	11	11	0	-0%
Total Veterans	41	55	54	55	61	6	11%
Sheltered Unaccompanied Youth (up to 24)	10	23	19	9	9	0	-0%
Unsheltered Unaccompanied Youth (up to 24)	0	0	2	4	1	-3	-75%
Total Unaccompanied Youth (up to 24)	10	23	21	13	10	-3	-23%

System Performance Measures Summary

	2016	2017	2018	2018	2020	2019-20 Change	% Change
Average Length of Time Homeless (days)	104	97	112	135	108	-27	-20%
Rate People Return to Homelessness in 6 Months	7.0%	10.9%	7.2%	8.9%	5.7%	-3.2%	N/A
Number of People who are Homeless for the First Time	1,065	1,058	844	629	657	28	4.5%
Rate People Exit from ES, SH, TH, and RRH to PH	33.3%	28.5%	23.4%	16.1%	24.4%	8.3%	N/A
Rate People in PSH and OPH Retain or Exit to PH	67.2%	94.2%	82.6%	96.7%	95.8%	-0.9%	N/A

Housing Inventory Count Summary

	2016	2017	2018	2019	2020	2019-20 Change	% Change
Emergency Shelter (ES)	258	247	213	226	226	0	-0%
Transitional Housing (TH)	164	146	147	130	130	0	-0%
Permanent Supportive Housing (PSH)	514	486	464	465	373	-92	-20%
Rapid Re-Housing (RRH)	47	58	55	39	8	-31	-79%

Award Summary

	2016	2017	2018	2019	2020	2019-20 Change	% Change
Continuum of Care (CoC)	\$2,105,613	\$2,032,293	\$1,243,676	\$1,176,724	\$1,232,522	\$55,798	5%
Emergency Solutions Grants (ESG)	\$142,483	\$336,140	\$139,508	\$149,024	\$146,352	(\$2,672)	-2%