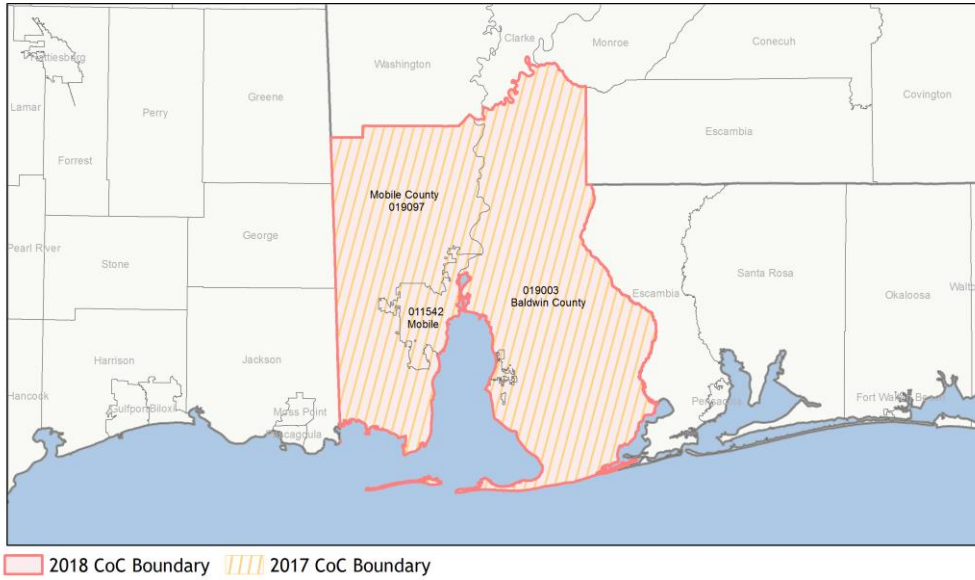
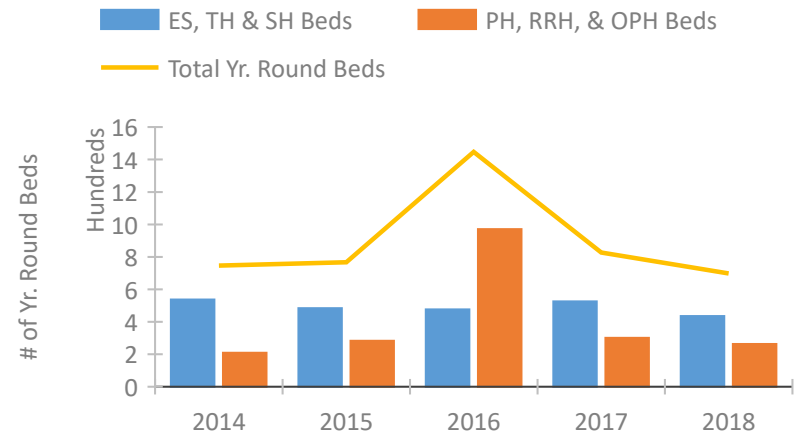


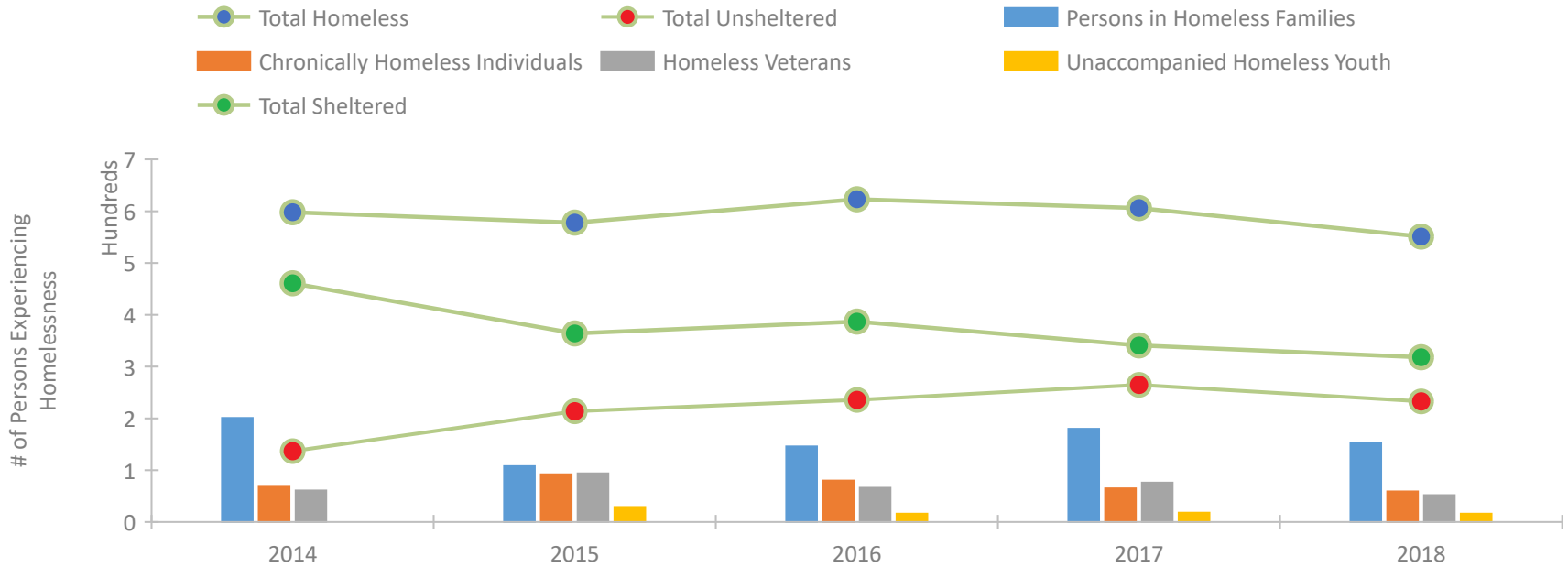
CoC Performance Profile AL-501 Mobile City & County/Baldwin County CoC



Housing Inventory Count by Program Type

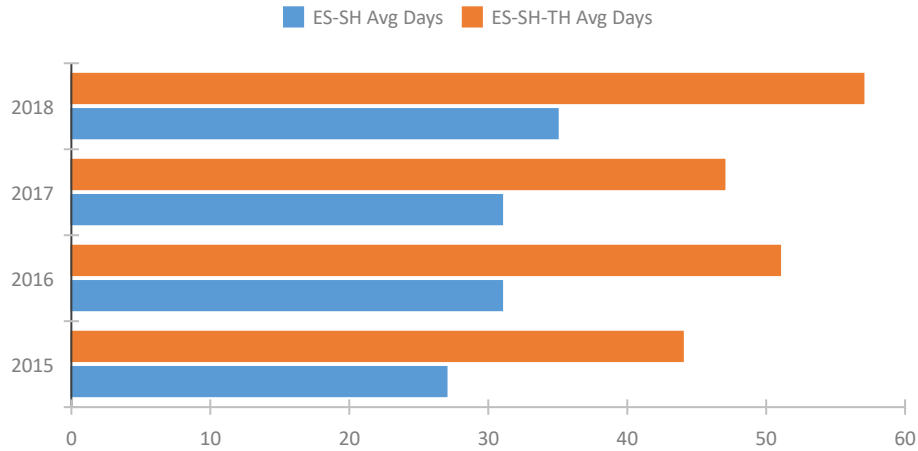


Homeless Population – Point-in-Time (PIT) Count

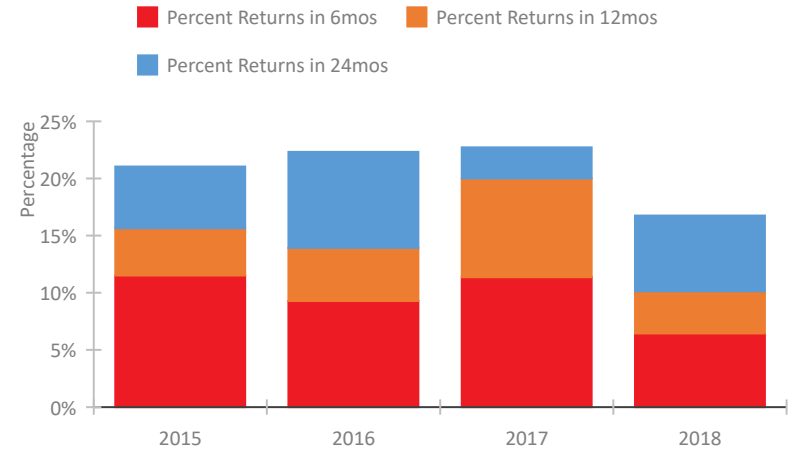


CoC Performance Profile AL-501 Mobile City & County/Baldwin County CoC

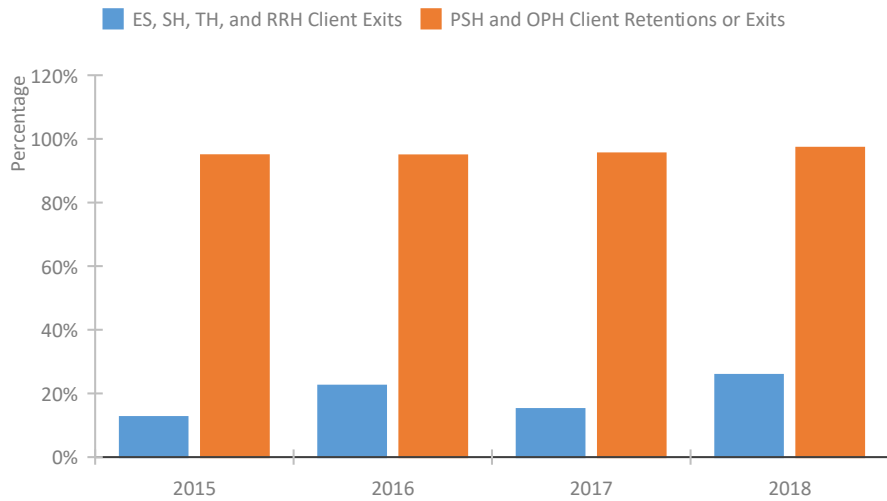
Length of Time Homeless



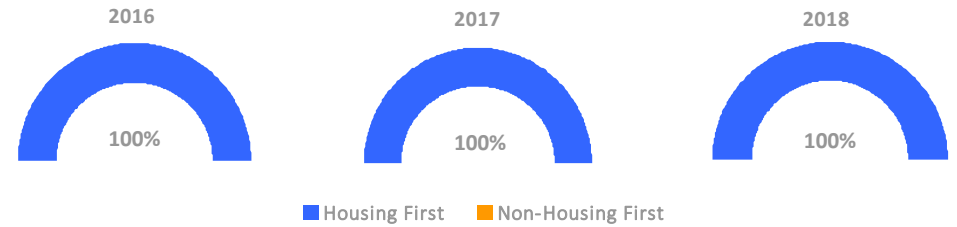
Returns to Homelessness Over Time



Exits to Permanent Housing by Program Type



Proportion of Housing First Projects by Year



Number of Projects by Year

	2016	2017	2018
Housing First Projects	7	6	7
Non-Housing First Projects	0	0	0

Data Summary: AL-501 Mobile City & County/Baldwin County CoC

Point-In-Time Count Summary

	2014	2015	2016	2017	2018	2017-18 Change	% Change
Number of Sheltered Persons in Families	189	87	134	162	135	-27	-17%
Number of Unsheltered Persons in Families	12	21	12	18	17	-1	-6%
Number of Sheltered Individuals	272	277	253	179	183	4	2%
Number of Unsheltered Individuals	125	193	224	247	216	-31	-13%
Total Homeless Persons	598	578	623	606	551	-55	-9%
Number of Sheltered Families	60	29	42	52	42	-10	-19%
Number of Unsheltered Families	4	6	4	5	6	1	20%
Number of Total Families	64	35	46	57	48	-9	-16%
Sheltered Chronically Homeless Individuals	32	23	30	9	11	2	22%
Unsheltered Chronically Homeless Individuals	36	69	50	56	48	-8	-14%
Total Chronically Homeless Individuals	68	92	80	65	59	-6	-9%
Sheltered Veterans	38	66	56	50	42	-8	-16%
Unsheltered Veterans	23	28	10	26	10	-16	-62%
Total Veterans	61	94	66	76	52	-24	-32%
Sheltered Unaccompanied Youth (up to 24)	--	20	11	9	8	-1	-11%
Unsheltered Unaccompanied Youth (up to 24)	--	9	5	9	8	-1	-11%
Total Unaccompanied Youth (up to 24)	--	29	16	18	16	-2	-11%

System Performance Measures Summary

	2014	2015	2016	2017	2018	2017-18 Change	% Change
Average Length of Time Homeless (days)	N/A	44	51	47	57	10	21.3%
Rate People Return to Homelessness in 6 Months	N/A	11.5%	9.3%	11.4%	6.4%	-4.9%	N/A
Number of People who are Homeless for the First Time	N/A	1929	1915	1764	1444	-320	-18.1%
Rate People Exit from ES, SH, TH, and RRH to PH	N/A	12.6%	22.4%	15.1%	25.8%	10.8%	N/A
Rate People in PSH and OPH Retain or Exit to PH	N/A	94.8%	94.8%	95.4%	97.2%	1.8%	N/A

Housing Inventory Count Summary

	2014	2015	2016	2017	2018	2017-18 Change	% Change
Emergency Shelter (ES)	344	359	354	304	298	-6	-2%
Transitional Housing (TH)	193	125	122	222	137	-85	-38%
Permanent Supportive Housing (PSH)	199	208	504	247	203	-44	-18%
Rapid Re-Housing (RRH)	10	75	467	54	60	6	11%

Award Summary

	2014	2015	2016	2017	2018	2017-18 Change	% Change
Continuum of Care (CoC)	\$3,885,464	\$3,953,258	\$3,851,277	\$3,853,644	\$3,811,801	(\$41,843)	-1%
Emergency Solutions Grants (ESG)	\$318,040	\$339,223	\$331,963	\$363,083	\$193,122	(\$169,961)	-47%