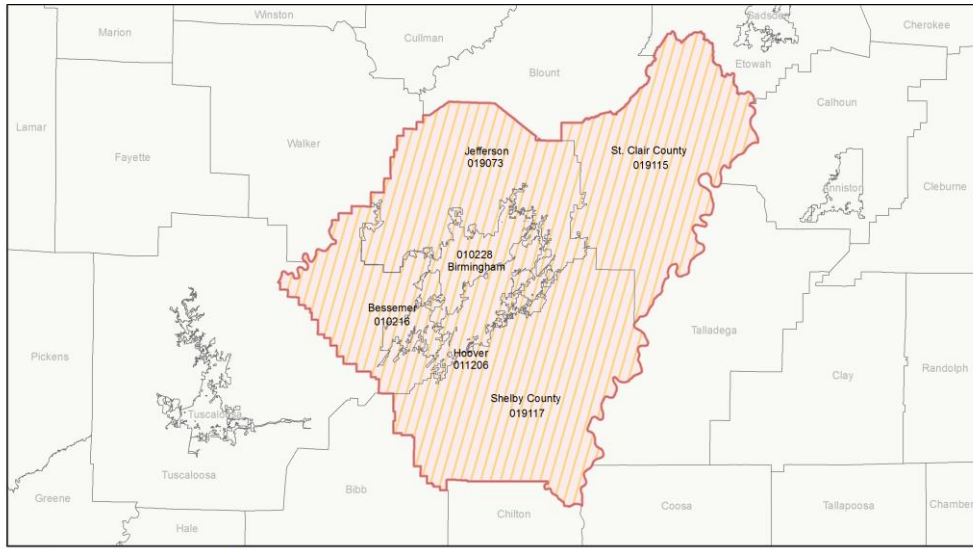


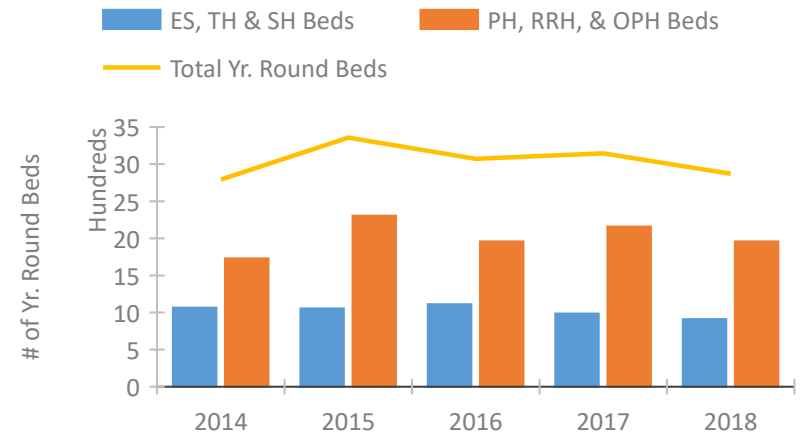
CoC Performance Profile AL-500

Birmingham/Jefferson, St. Clair, Shelby Counties CoC

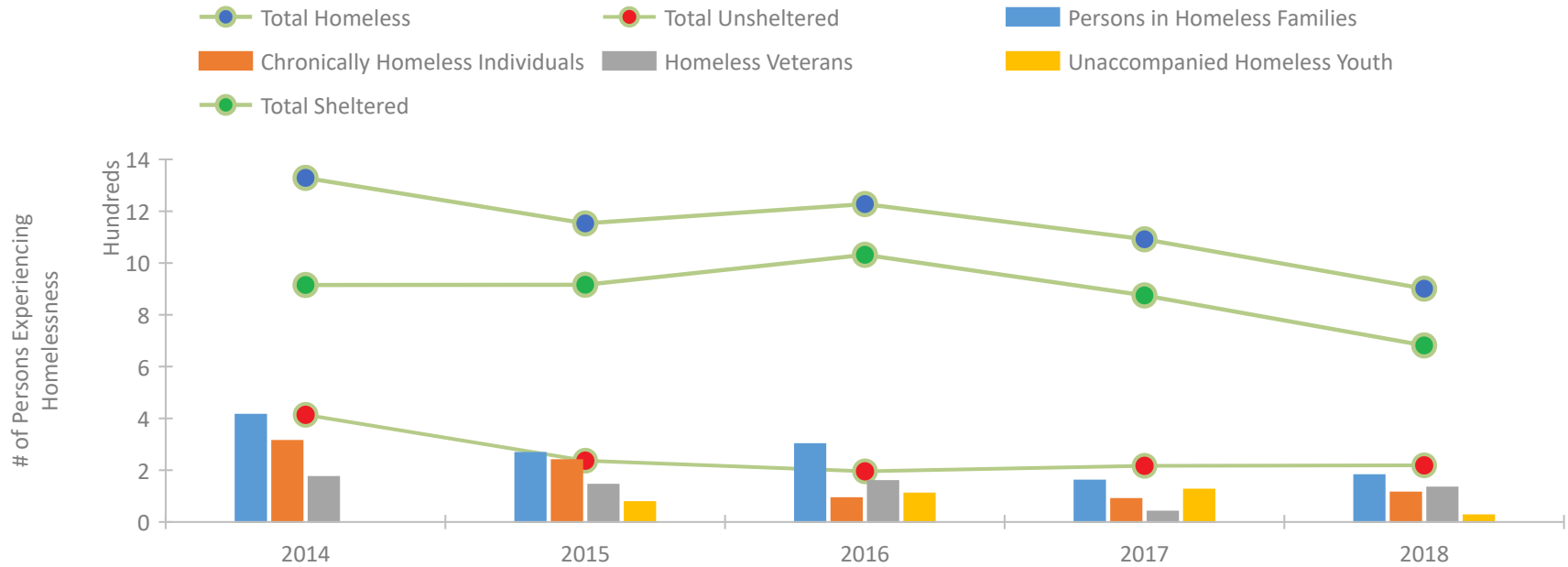


2018 CoC Boundary 2017 CoC Boundary

Housing Inventory Count by Program Type

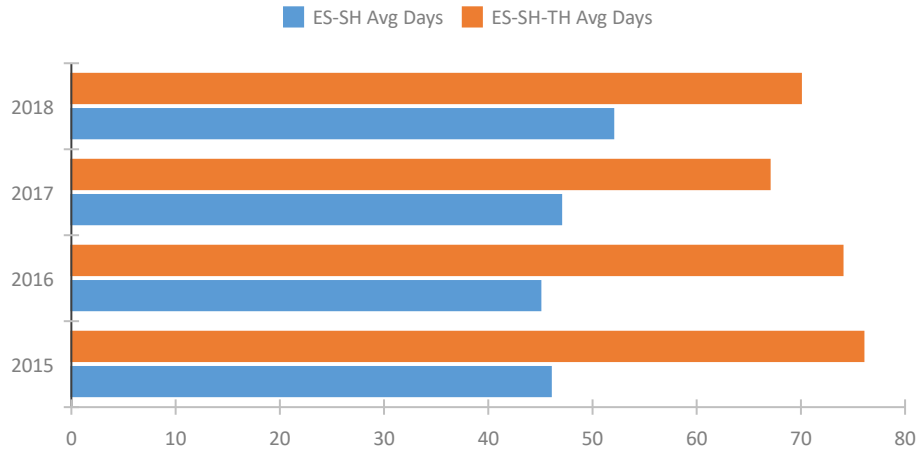


Homeless Population – Point-in-Time (PIT) Count

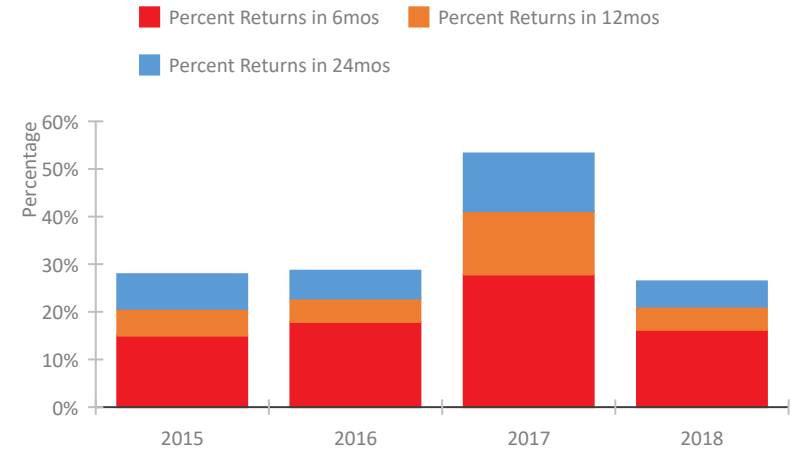


CoC Performance Profile AL-500 Birmingham/Jefferson, St. Clair, Shelby Counties CoC

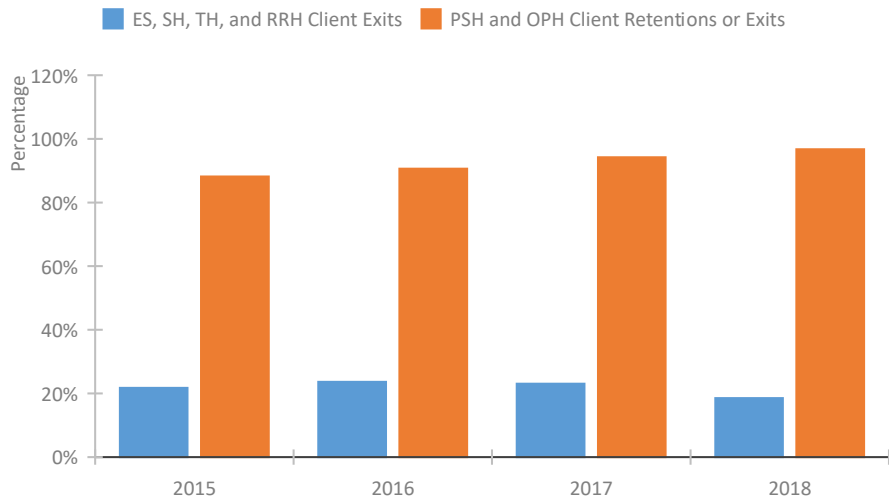
Length of Time Homeless



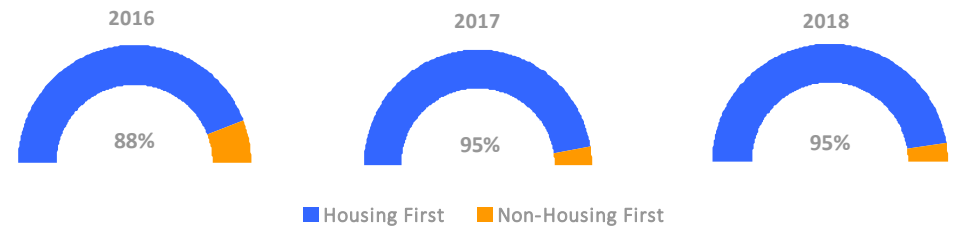
Returns to Homelessness Over Time



Exits to Permanent Housing by Program Type



Proportion of Housing First Projects by Year



Number of Projects by Year

	2016	2017	2018
Housing First Projects	15	18	21
Non-Housing First Projects	2	1	1

Data Summary: AL-500 Birmingham/Jefferson, St. Clair, Shelby Counties CoC

Point-In-Time Count Summary

	2014	2015	2016	2017	2018	2017-18 Change	% Change
Number of Sheltered Persons in Families	343	255	289	160	181	21	13%
Number of Unsheltered Persons in Families	71	12	12	0	0	0	--
Number of Sheltered Individuals	572	661	743	715	501	-214	-30%
Number of Unsheltered Individuals	343	225	184	217	219	2	1%
Total Homeless Persons	1,329	1,153	1,228	1,092	901	-191	-17%
Number of Sheltered Families	111	84	98	60	54	-6	-10%
Number of Unsheltered Families	28	4	3	0	0	0	--
Number of Total Families	139	88	101	60	54	-6	-10%
Sheltered Chronically Homeless Individuals	94	35	29	28	90	62	221%
Unsheltered Chronically Homeless Individuals	219	204	63	61	24	-37	-61%
Total Chronically Homeless Individuals	313	239	92	89	114	25	28%
Sheltered Veterans	154	133	156	29	116	87	300%
Unsheltered Veterans	20	11	2	11	17	6	55%
Total Veterans	174	144	158	40	133	93	233%
Sheltered Unaccompanied Youth (up to 24)	--	56	88	80	21	-59	-74%
Unsheltered Unaccompanied Youth (up to 24)	--	21	22	45	5	-40	-89%
Total Unaccompanied Youth (up to 24)	--	77	110	125	26	-99	-79%

System Performance Measures Summary

	2014	2015	2016	2017	2018	2017-18 Change	% Change
Average Length of Time Homeless (days)	N/A	76	74	67	70	3	4.5%
Rate People Return to Homelessness in 6 Months	N/A	15.0%	17.9%	27.9%	16.2%	-11.6%	N/A
Number of People who are Homeless for the First Time	N/A	3302	3121	2938	2512	-426	-14.5%
Rate People Exit from ES, SH, TH, and RRH to PH	N/A	21.8%	23.6%	23.1%	18.5%	-4.6%	N/A
Rate People in PSH and OPH Retain or Exit to PH	N/A	88.2%	90.6%	94.2%	96.7%	2.5%	N/A

Housing Inventory Count Summary

	2014	2015	2016	2017	2018	2017-18 Change	% Change
Emergency Shelter (ES)	400	406	493	595	569	-26	-4%
Safe Haven (SH)	34	34	34	34	34	0	0%
Transitional Housing (TH)	631	614	586	357	308	-49	-14%
Permanent Supportive Housing (PSH)	1,729	1,686	1,492	1,542	1,768	226	15%
Rapid Re-Housing (RRH)	--	585	374	525	191	-334	-64%

Award Summary

	2014	2015	2016	2017	2018	2017-18 Change	% Change
Continuum of Care (CoC)	\$8,421,368	\$8,997,707	\$8,909,627	\$9,368,654	\$9,482,514	\$113,860	1%
Emergency Solutions Grants (ESG)	\$597,405	\$642,868	\$639,170	\$848,206	\$670,525	(\$177,681)	-21%