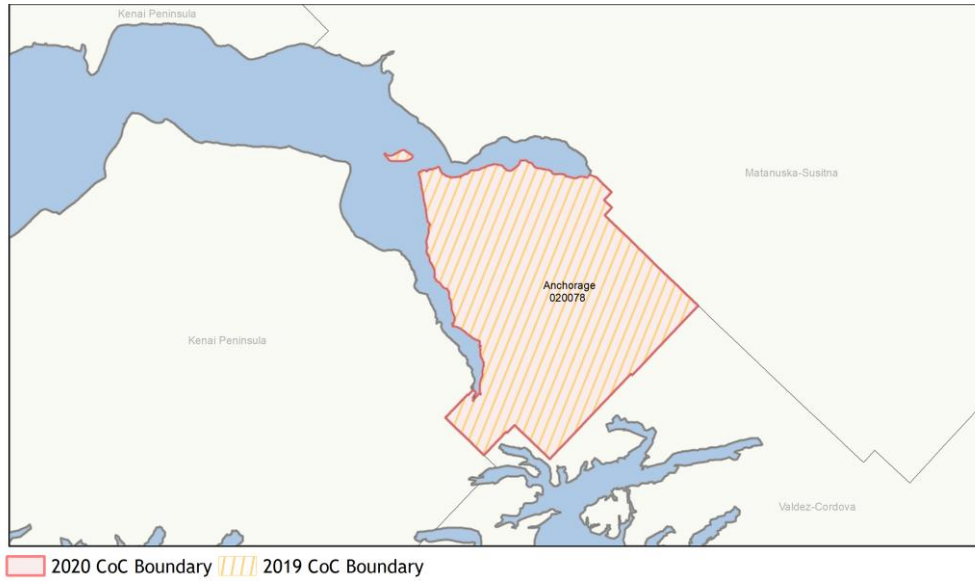
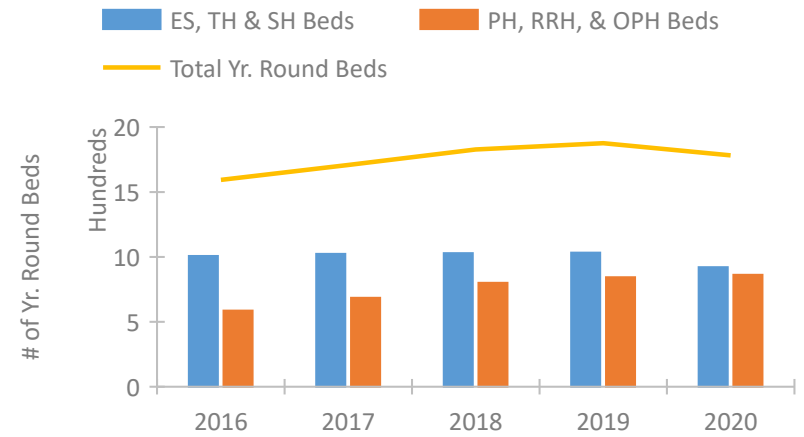


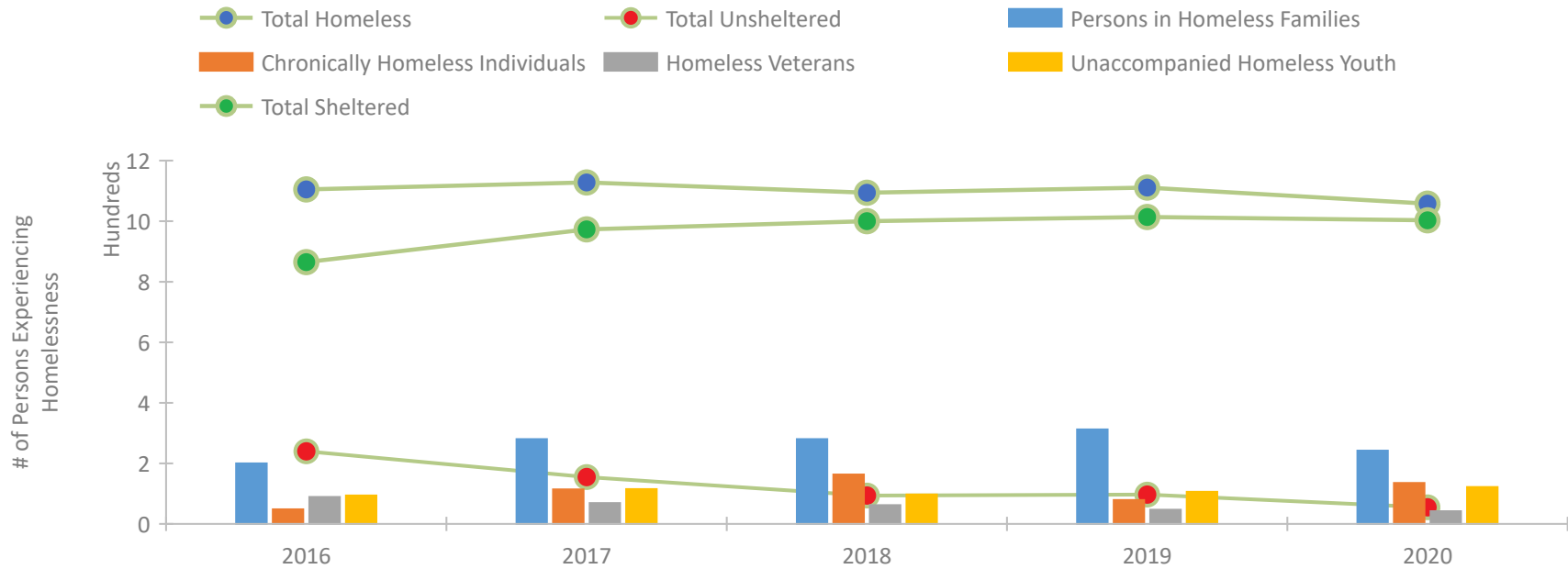
CoC Performance Profile AK-500 Anchorage CoC



Housing Inventory Count by Program Type

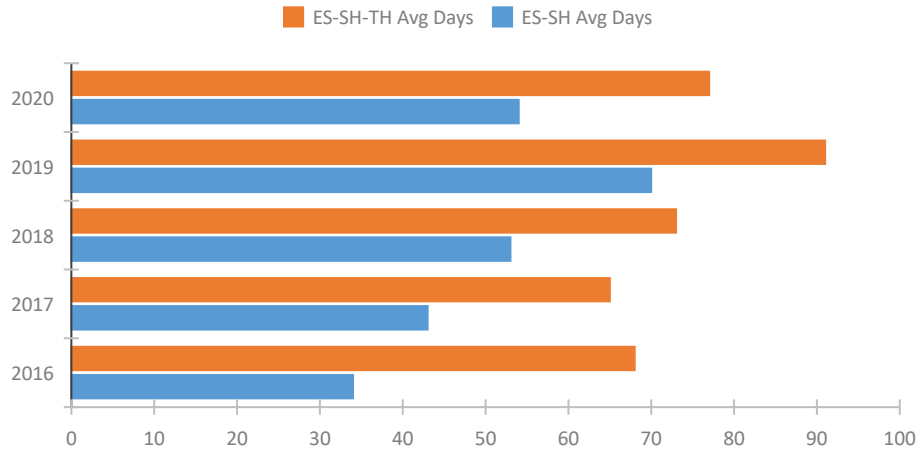


Homeless Population – Point-in-Time (PIT) Count

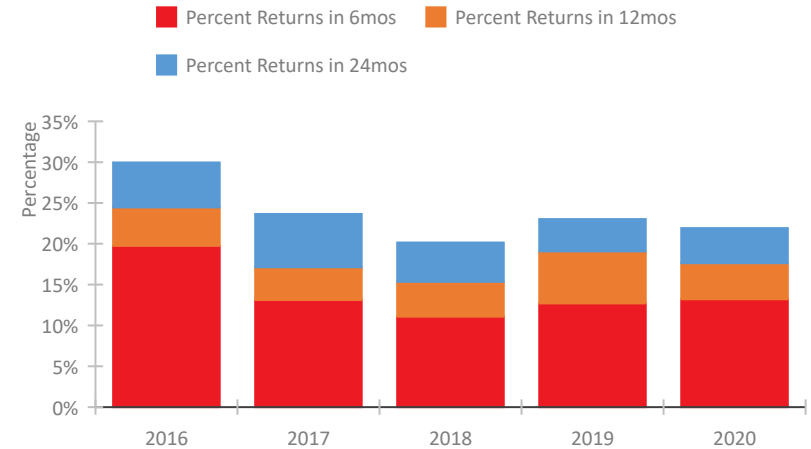


CoC Performance Profile AK-500 Anchorage CoC

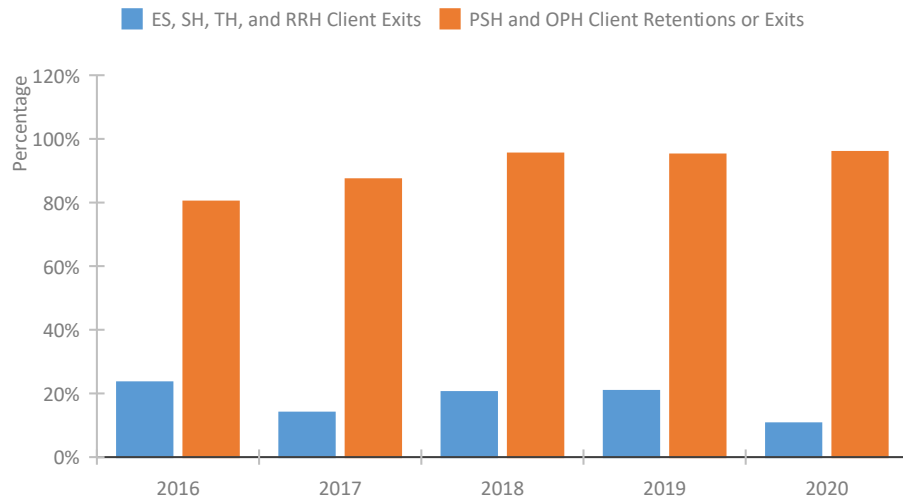
Length of Time Homeless



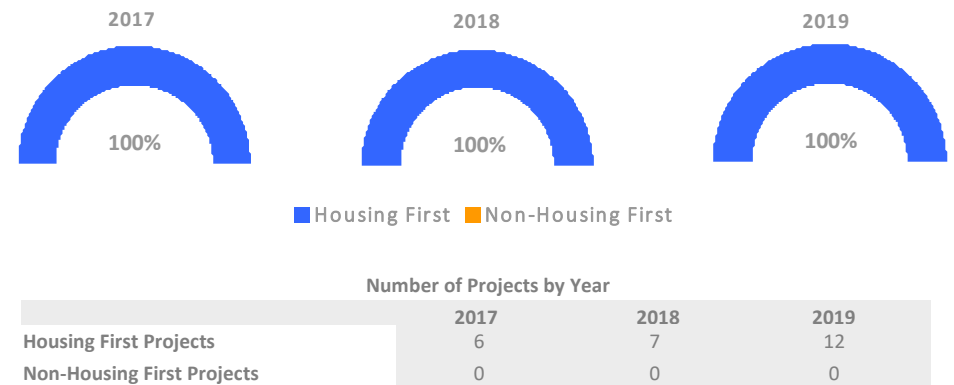
Returns to Homelessness Over Time



Exits to Permanent Housing by Program Type



Proportion of Housing First Projects by Year*



Number of Projects by Year				
	2017	2018	2019	
Housing First Projects	6	7	12	
Non-Housing First Projects	0	0	0	

*In 2020 HUD awarded renewal projects noncompetitively, therefore no new data was collected and Housing First data remains the same from 2019 to 2020.

Data Summary: AK-500 Anchorage CoC

Point-In-Time Count Summary

	2016	2017	2018	2019	2020	2019-20 Change	% Change
Number of Sheltered Persons in Families	200	280	280	312	242	-70	-22%
Number of Unsheltered Persons in Families	0	0	0	0	0	0	--
Number of Sheltered Individuals	665	693	720	702	761	59	8%
Number of Unsheltered Individuals	240	155	94	97	55	-42	-43%
Total Homeless Persons	1,105	1,128	1,094	1,111	1,058	-53	-5%
Number of Sheltered Families	69	87	87	89	75	-14	-16%
Number of Unsheltered Families	0	0	0	0	0	0	--
Number of Total Families	69	87	87	89	75	-14	-16%
Sheltered Chronically Homeless Individuals	46	70	136	61	120	59	97%
Unsheltered Chronically Homeless Individuals	2	44	27	18	15	-3	-17%
Total Chronically Homeless Individuals	48	114	163	79	135	56	71%
Sheltered Veterans	60	57	58	37	40	3	8%
Unsheltered Veterans	29	12	4	10	2	-8	-80%
Total Veterans	89	69	62	47	42	-5	-11%
Sheltered Unaccompanied Youth (up to 24)	84	101	94	105	122	17	16%
Unsheltered Unaccompanied Youth (up to 24)	10	14	3	1	0	-1	-100%
Total Unaccompanied Youth (up to 24)	94	115	97	106	122	16	15%

System Performance Measures Summary

	2016	2017	2018	2018	2020	2019-20 Change	% Change
Average Length of Time Homeless (days)	68	65	73	91	77	-14	-15.4%
Rate People Return to Homelessness in 6 Months	19.7%	13.1%	11.1%	12.7%	13.2%	0.5%	N/A
Number of People who are Homeless for the First Time	2,235	3,153	2,931	2,184	3,321	1,137	52.1%
Rate People Exit from ES, SH, TH, and RRH to PH	23.5%	13.9%	20.4%	20.8%	10.6%	-10.2%	N/A
Rate People in PSH and OPH Retain or Exit to PH	80.3%	87.3%	95.4%	95.1%	95.9%	0.8%	N/A

Housing Inventory Count Summary

	2016	2017	2018	2019	2020	2019-20 Change	% Change
Emergency Shelter (ES)	553	597	749	799	720	-79	-10%
Transitional Housing (TH)	454	426	279	234	200	-34	-15%
Permanent Supportive Housing (PSH)	434	571	604	601	558	-43	-7%
Rapid Re-Housing (RRH)	55	43	125	171	212	41	24%
Other Permanent Housing (OPH)	97	71	71	71	92	21	30%

Award Summary

	2016	2017	2018	2019	2020	2019-20 Change	% Change
Continuum of Care (CoC)	\$2,936,677	\$2,932,595	\$3,112,658	\$3,982,876	\$3,855,634	(\$127,242)	-3%
Emergency Solutions Grants (ESG)	\$145,258	\$277,946	\$145,198	\$146,461	\$151,146	\$4,685	3%
Youth Homelessness Demonstration Program (YHDP)	\$1,506,654	--	--	--	--	--	--