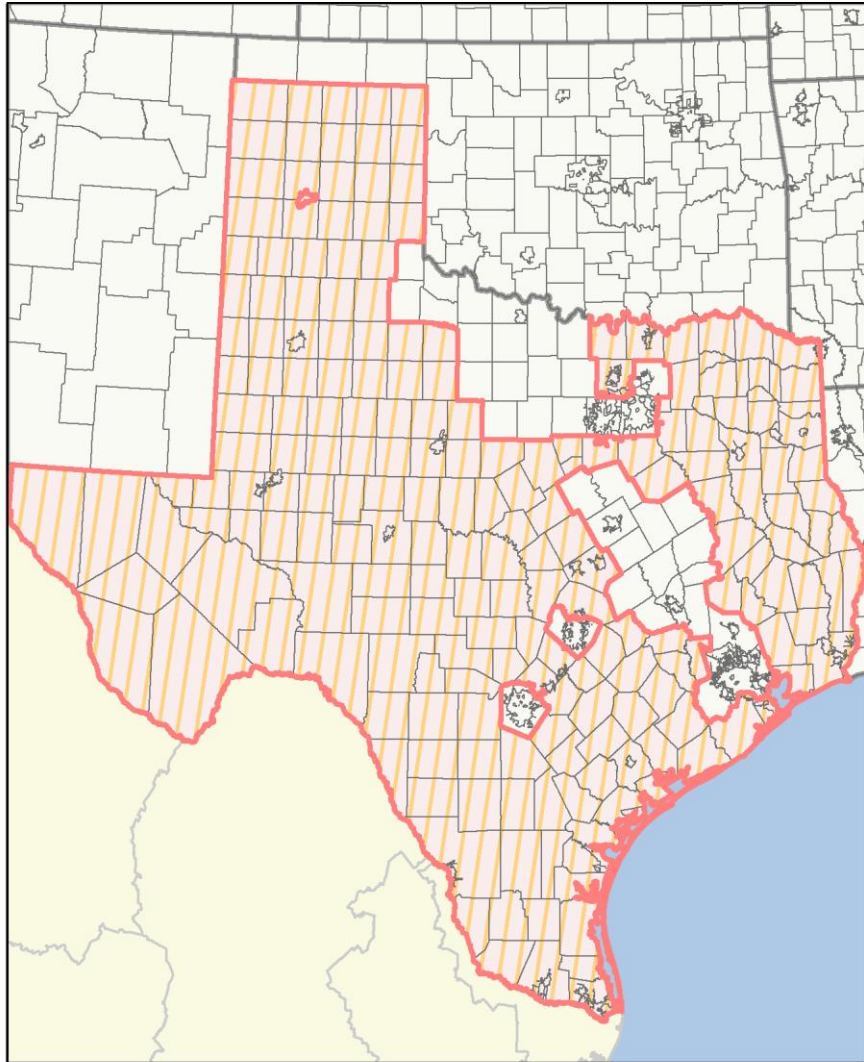




Important Notes About This Data: This report is based on information provided to HUD by Continuums of Care (CoCs) in the fiscal year 2017 application for CoC Homeless Assistance Programs. HUD has conducted a limited data quality review but has not independently verified all of the information submitted by each CoC. The reader is therefore cautioned that since compliance with these standards may vary, the reliability and consistency of the Housing Inventory and Homeless Count data may also vary among CoCs. Additionally, a shift in the methodology a CoC uses to count the homeless may cause a change in homeless counts between reporting periods. For inquiries about data reported by a specific Continuum of Care, please contact that jurisdiction directly. CoC contact information can be found on the HUD Exchange website (<https://www.hudexchange.info/grantees/?granteesaction=main.searchresultsprogramid=3>).

CoC Name: Texas Balance of State CoC

CoC Number: TX-607



2017 CoC Boundary 2016 CoC Boundary

Gecode	Name	Gecode	Name	Gecode	Name	Gecode	Name	Gecode	Name
480018	Abilene	481416	Denton	489243	Jeff Davis	489347	Nacogdoches	489443	Terrell
489001	Anderson	489123	DeWitt	489245	Jefferson	489349	Navarro	489445	Terry
489003	Andrews	489125	Dickens	489247	Jim Hogg	483798	New Braunfels	485340	Texasarkana
489005	Angelina	489127	Dimmit	489249	Jim Wells	489351	Newton	485346	Texas City
489007	Aranzas	489129	Donley	489251	Johnson	489353	Nolan	489449	Titus
489011	Armstrong	489131	Duval	489253	Jones	489355	Nueces	489451	Tom Green
489013	Atascosa	489133	Eastland	489255	Karnes	489357	Ochiltree	489455	Trinity
489015	Austin	489135	Ector	489257	Kaufman	483924	Odessa	485496	Tyler
489017	Bailey	481608	Edinburg	489259	Kendall	489359	Oldham	489457	Tyler
489019	Bandera	489137	Edward	489261	Kenedy	489361	Orange	489459	Upshur
489021	Bastrop	489139	Ellis	489263	Kerr	483966	Orange	489461	Upton
480402	Beaumont	489143	Erath	489265	Kerr	489365	Panola	489463	Uvalde
489025	Bee	489147	Fannin	482820	Killeen	489369	Parmer	489465	Val Verde
489027	Bel	489149	Fayette	489267	Kimble	484080	Pearland	489467	Van Zandt
489031	Blanco	489151	Fisher	489269	King	489371	Pecos	489469	Victoria
489033	Borden	481824	Flower Mound	489271	Kinney	484146	Pharr	485580	Victoria
489037	Bowie	489153	Floyd	489273	Kleberg	489373	Polk	489471	Walker
489039	Brazoria	489159	Franklin	489275	Knox	484248	Port Arthur	489473	Waller
489043	Brewster	489163	Frio	489283	La Salle	489375	Potter	489475	Ward
489045	Briscoe	489165	Gaines	489277	Lamar	489377	Presidio	489477	Washington
489047	Brooks	489167	Galveston	489279	Lamb	489379	Rains	489479	Webb
489049	Brown	481986	Galveston	489281	Lampasas	489381	Randall	489481	Wharton
480726	Brownsville	489169	Garza	483042	Laredo	489383	Reagan	489483	Wheeler
489053	Burnet	489171	Gillespie	489285	Lavaca	489385	Real	489489	Wills
489055	Caldwell	489173	Glasscock	483084	League City	489387	Red River	489491	Williamson
489057	Calhoun	489175	Goliad	489287	Lee	489389	Reeves	489493	Wilson
489059	Callahan	489177	Gonzales	483132	Lewisville	489391	Refugio	489495	Winkler
489061	Cameron	489179	Gray	489291	Liberty	489393	Roberts	489499	Wood
489063	Camp	489181	Grayson	489295	Lipscomb	489397	Rockwall	489501	Yoakum
489065	Carson	489183	Gregg	489297	Live Oak	484674	Round Rock	489505	Zapata
489067	Cass	489187	Guadalupe	489299	Llano	489399	Runnels	489507	Zavala
489069	Castro	489189	Hale	483246	Longview	489401	Rusk		
489071	Chambers	489191	Hall	489301	Loving	489403	Sabine		
489073	Cherokee	489193	Hamilton	489303	Lubbock	484752	San Angelo		
489079	Cochran	489195	Hansford	483288	Lubbock	489405	San Augustine		
489081	Coke	489199	Hardin	489305	Lynn	484770	San Benito		
489083	Coleman	482304	Harlingen	489315	Marion	489407	San Jacinto		
489087	Collingsworth	489203	Harrison	483438	Marshall	484812	San Marcos		
489089	Colorado	489205	Hartley	489317	Martin	489409	San Patricio		
489091	Comal	489207	Haskell	489319	Mason	489411	San Saba		
489093	Comanche	489209	Hays	489321	Mataorda	489413	Schleicher		
489095	Concho	489211	Hemphill	489323	Maverick	489415	Scurry		
489097	Cooke	489213	Henderson	483330	Mc Allen	489417	Shackelford		
481206	Corpus Christi	489215	Hidalgo	489307	McCulloch	489419	Shelby		
489099	Correll	489219	Hockley	489311	McMullen	489421	Sherman		
489103	Crane	489221	Hood	489325	Medina	484962	Sherman		
489105	Crockett	489223	Hopkins	489327	Menard	489423	Smith		
489107	Crosby	489225	Houston	489329	Midland	489425	Somervell		
489109	Culberson	489227	Howard	483564	Midland	489427	Starr		
489111	Dallam	489229	Hudspeth	489333	Mills	489431	Sterling		
489115	Dawson	489231	Hunt	483606	Mission	489433	Stonewall		
489117	Deaf Smith	489233	Hutchinson	489335	Mitchell	489435	Sutton		
489119	Delta	489235	Irion	489341	Moore	489437	Swisher		
481410	Denison	489239	Jackson	489343	Morris	489441	Taylor		
489121	Denton	489241	Jasper	489345	Motley	485316	Temple		



Important Notes About This Data: This report is based on information provided to HUD by Continuums of Care (CoCs) in the fiscal year 2017 application for CoC Homeless Assistance Programs. HUD has conducted a limited data quality review but has not independently verified all of the information submitted by each CoC. The reader is therefore cautioned that since compliance with these standards may vary, the reliability and consistency of the Housing Inventory and Homeless Count data may also vary among CoCs. Additionally, a shift in the methodology a CoC uses to count the homeless may cause a change in homeless counts between reporting periods. For inquiries about data reported by a specific Continuum of Care, please contact that jurisdiction directly. CoC contact information can be found on the HUD Exchange website (<https://www.hudexchange.info/grantees/?granteesaction=main.searchresultsprogramid=3>).

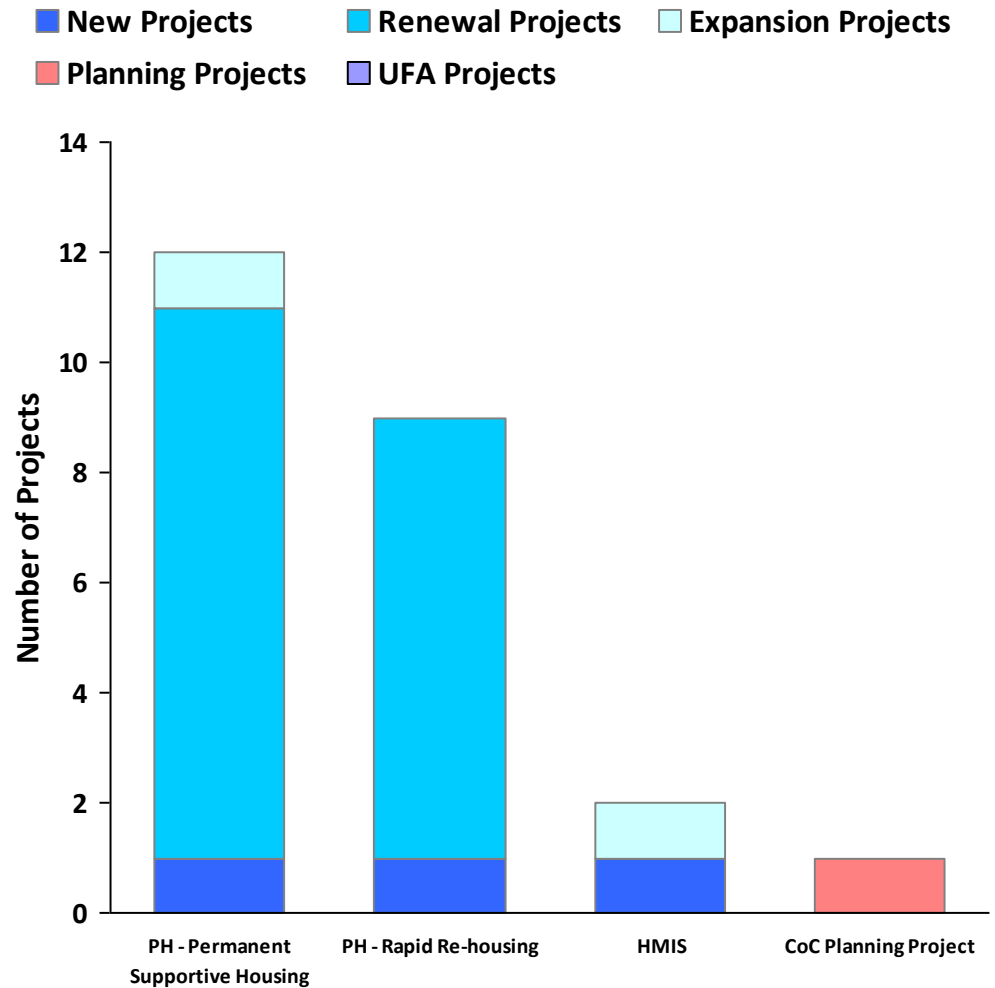
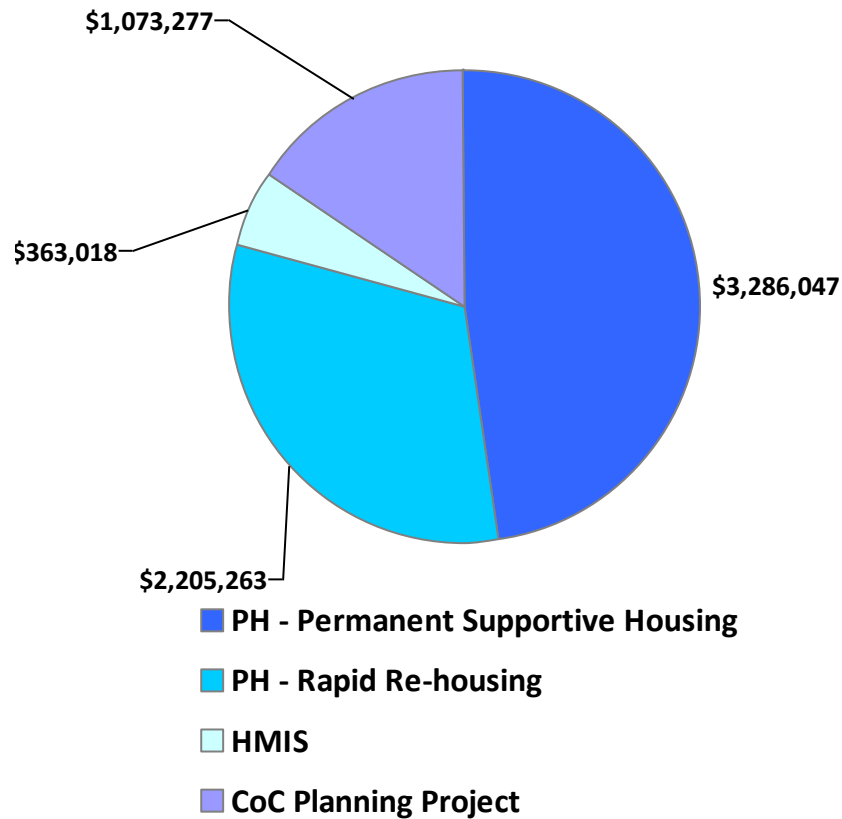
CoC Name: Texas Balance of State CoC

CoC Number: TX-607

2017 Awards by Component and Renewal Type

Total Award Amount

\$6,927,605.00





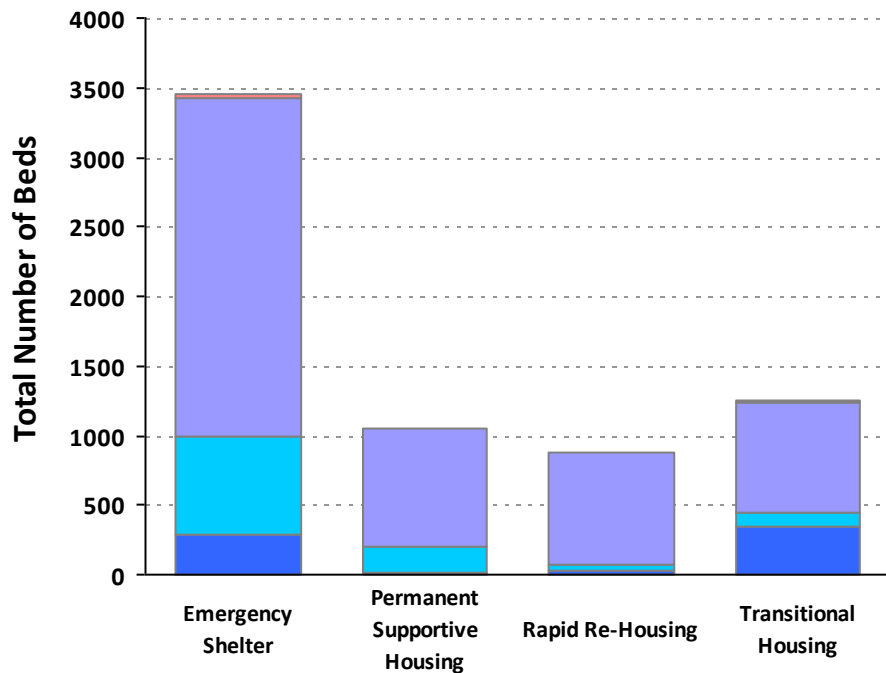
Important Notes About This Data: This report is based on information provided to HUD by Continuums of Care (CoCs) in the fiscal year 2017 application for CoC Homeless Assistance Programs. HUD has conducted a limited data quality review but has not independently verified all of the information submitted by each CoC. The reader is therefore cautioned that since compliance with these standards may vary, the reliability and consistency of the Housing Inventory and Homeless Count data may also vary among CoCs. Additionally, a shift in the methodology a CoC uses to count the homeless may cause a change in homeless counts between reporting periods. For inquiries about data reported by a specific Continuum of Care, please contact that jurisdiction directly. CoC contact information can be found on the HUD Exchange website (<https://www.hudexchange.info/grantees/?granteesaction=main.searchresultsprogramid=3>).

CoC Name: Texas Balance of State CoC

CoC Number: TX-607

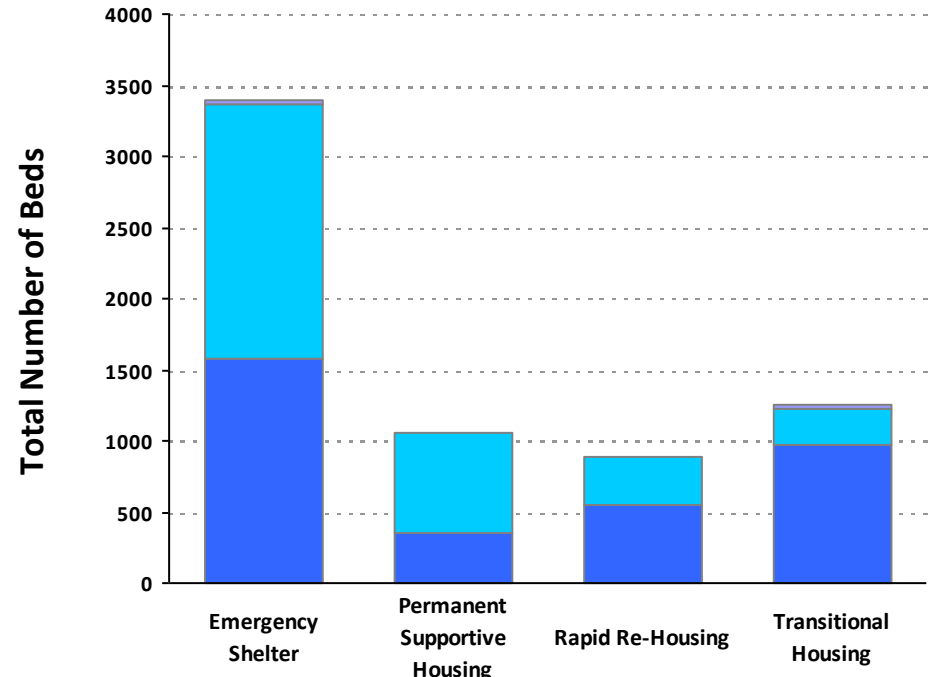
2017 Housing Inventory Summarized by Target Population and Bed Type

Beds by Designated Target Population



■ Youth	28			12
■ Mixed	2433	857	811	797
■ Individuals	710	182	50	89
■ Households	284	13	22	350

Beds by Intended Household Type Served



■ Child-Only Beds	28	0	0	19
■ Adult-Only Beds	1794	694	339	254
■ Adult & Child Beds**	1573	358	544	975

* Mixed beds may serve any target population

**Adult & Child and Adult & Child Beds refer to beds for households with one adult and at least one child under age 18



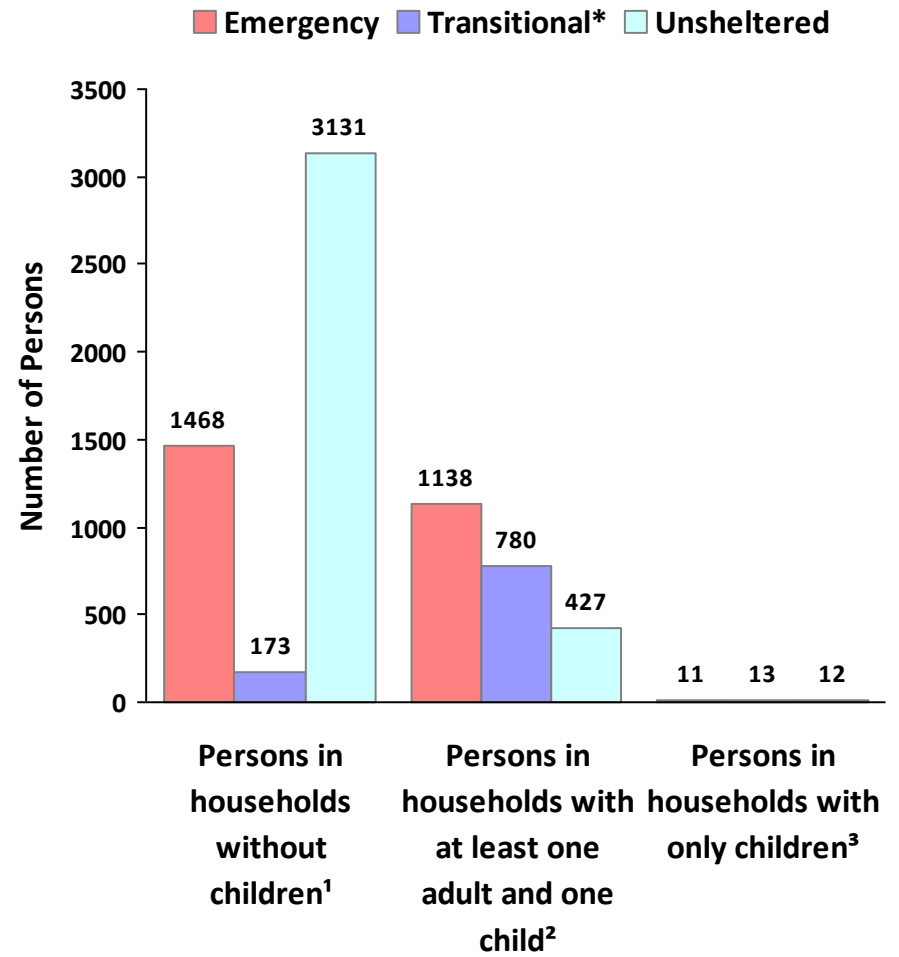
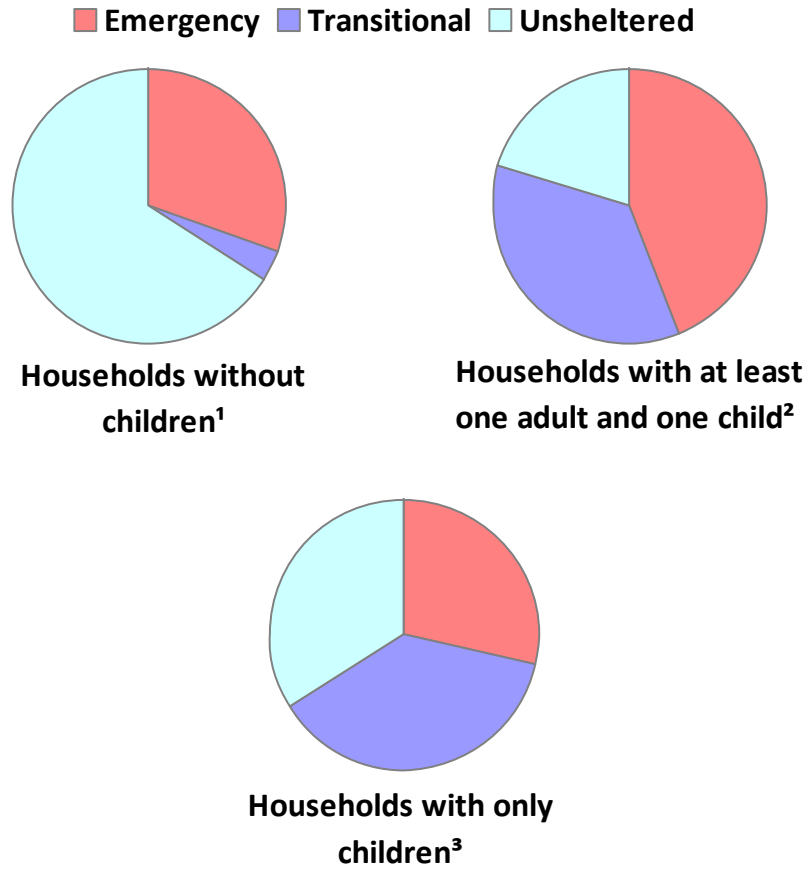
Important Notes About This Data: This report is based on information provided to HUD by Continuums of Care (CoCs) in the fiscal year 2017 application for CoC Homeless Assistance Programs. HUD has conducted a limited data quality review but has not independently verified all of the information submitted by each CoC. The reader is therefore cautioned that since compliance with these standards may vary, the reliability and consistency of the Housing Inventory and Homeless Count data may also vary among CoCs. Additionally, a shift in the methodology a CoC uses to count the homeless may cause a change in homeless counts between reporting periods. For inquiries about data reported by a specific Continuum of Care, please contact that jurisdiction directly. CoC contact information can be found on the HUD Exchange website (<https://www.hudexchange.info/grantees/?granteesaction=main.searchresultsprogramid=3>).

CoC Name: Texas Balance of State CoC

CoC Number: TX-607

2017 Point in Time Count Summarized by Household Type

Proportion of Households Served by Program Type



* Safe Haven programs are included in the Transitional Housing category.

¹This category includes single adults, adult couples with no children, and groups of adults. ²This category includes households with one adult and at least one child under age 18.

³This category includes persons under age 18, including children in one-child households, adolescent parents and their children, adolescent siblings, or other household configurations composed only of children.

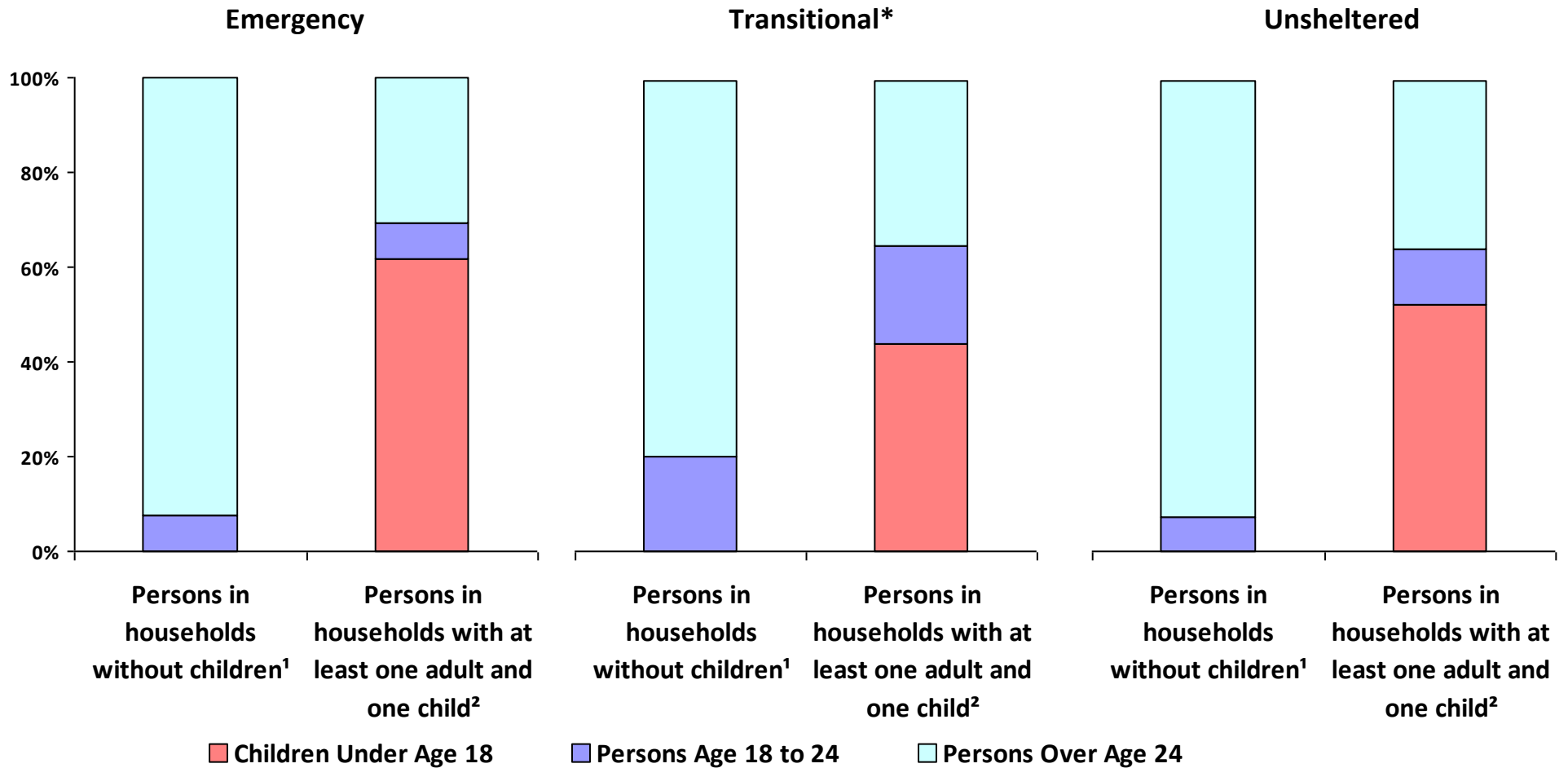


Important Notes About This Data: This report is based on information provided to HUD by Continuums of Care (CoCs) in the fiscal year 2017 application for CoC Homeless Assistance Programs. HUD has conducted a limited data quality review but has not independently verified all of the information submitted by each CoC. The reader is therefore cautioned that since compliance with these standards may vary, the reliability and consistency of the Housing Inventory and Homeless Count data may also vary among CoCs. Additionally, a shift in the methodology a CoC uses to count the homeless may cause a change in homeless counts between reporting periods. For inquiries about data reported by a specific Continuum of Care, please contact that jurisdiction directly. CoC contact information can be found on the HUD Exchange website (<https://www.hudexchange.info/grantees/?granteesaction=main.searchresultsprogramid=3>).

CoC Name: Texas Balance of State CoC

CoC Number: TX-607

2017 Point-In-Time Count Proportion of Persons in each Age Group by Household Type



* Safe Haven programs are included in the Transitional Housing category.

¹This category includes single adults, adult couples with no children, and groups of adults. ²This category includes households with one adult and at least one child under age 18.

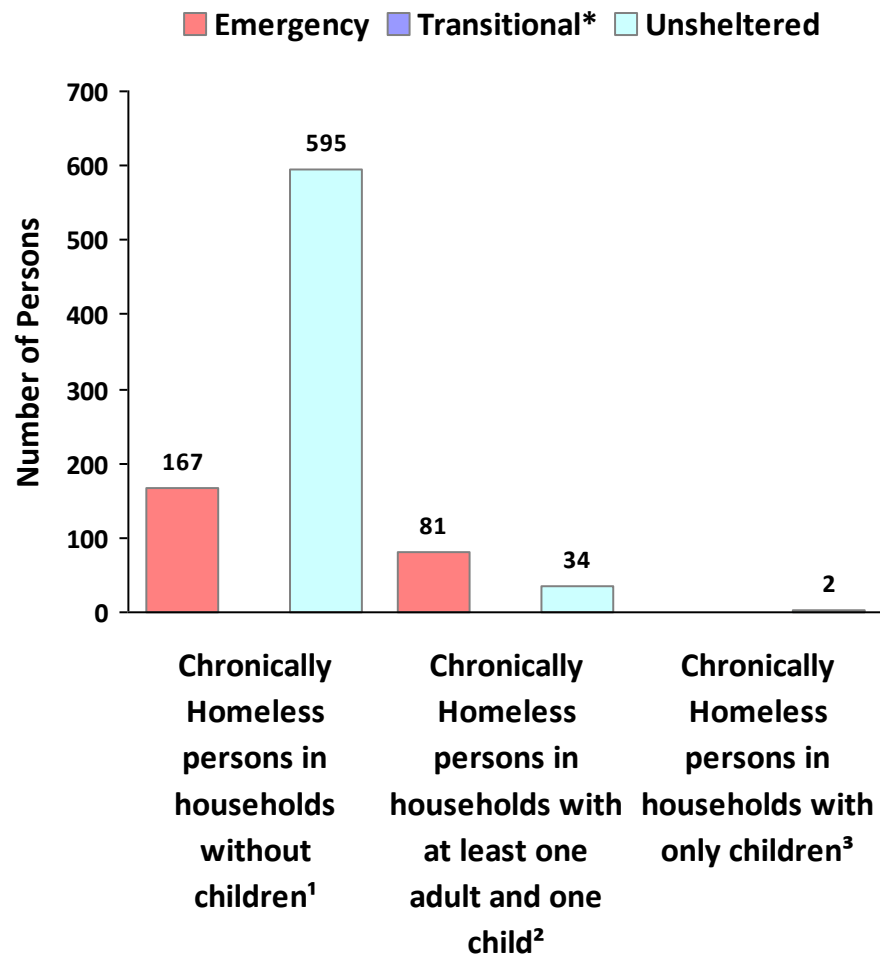
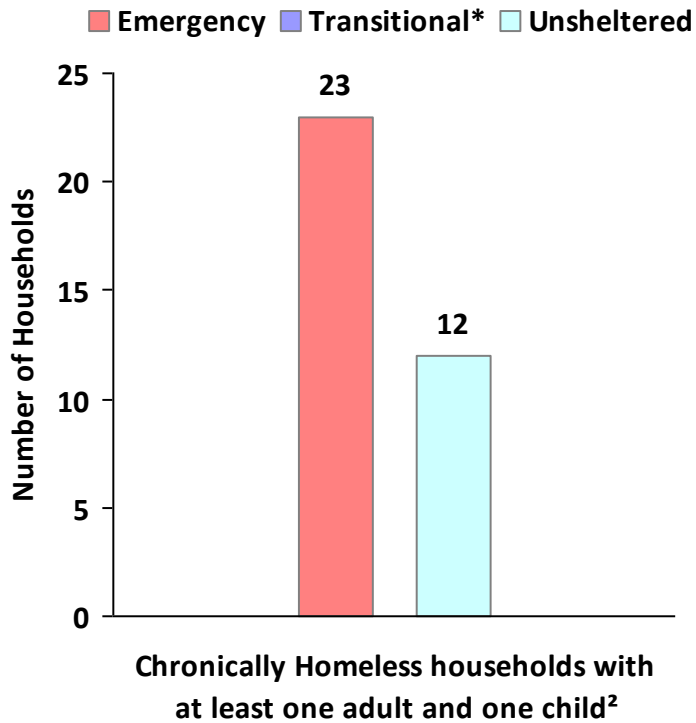


Important Notes About This Data: This report is based on information provided to HUD by Continuums of Care (CoCs) in the fiscal year 2017 application for CoC Homeless Assistance Programs. HUD has conducted a limited data quality review but has not independently verified all of the information submitted by each CoC. The reader is therefore cautioned that since compliance with these standards may vary, the reliability and consistency of the Housing Inventory and Homeless Count data may also vary among CoCs. Additionally, a shift in the methodology a CoC uses to count the homeless may cause a change in homeless counts between reporting periods. For inquiries about data reported by a specific Continuum of Care, please contact that jurisdiction directly. CoC contact information can be found on the HUD Exchange website (<https://www.hudexchange.info/grantees/?granteesaction=main.searchresultsprogramid=3>).

CoC Name: Texas Balance of State CoC

CoC Number: TX-607

2017 Point in Time Count Summarized by Chronically Homeless by Household Type



* Safe Haven programs are included in the Transitional Housing category.

¹This category includes single adults, adult couples with no children, and groups of adults. ²This category includes households with one adult and at least one child under age 18.

³This category includes persons under age 18, including children in one-child households, adolescent parents and their children, adolescent siblings, or other household configurations composed only of children.



Important Notes About This Data: This report is based on information provided to HUD by Continuums of Care (CoCs) in the fiscal year 2017 application for CoC Homeless Assistance Programs. HUD has conducted a limited data quality review but has not independently verified all of the information submitted by each CoC. The reader is therefore cautioned that since compliance with these standards may vary, the reliability and consistency of the Housing Inventory and Homeless Count data may also vary among CoCs. Additionally, a shift in the methodology a CoC uses to count the homeless may cause a change in homeless counts between reporting periods. For inquiries about data reported by a specific Continuum of Care, please contact that jurisdiction directly. CoC contact information can be found on the HUD Exchange website (<https://www.hudexchange.info/grantees/?granteesaction=main.searchresultsprogramid=3>).

CoC Name: Texas Balance of State CoC

CoC Number: TX-607

2017 Point in Time Count Summarized by Sub-Population

