



# Strategies to Support Homeless and at-Risk Clients with Effectively Utilizing the Healthcare System



# Webinar Format

## **Our Webinar Format:**

Speakers will present for ten minutes. Following each presentation there will be an opportunity to entertain a few questions. Following all the speakers we will have approximately 15 minutes for Questions and Answers.

## **How to ask questions:**

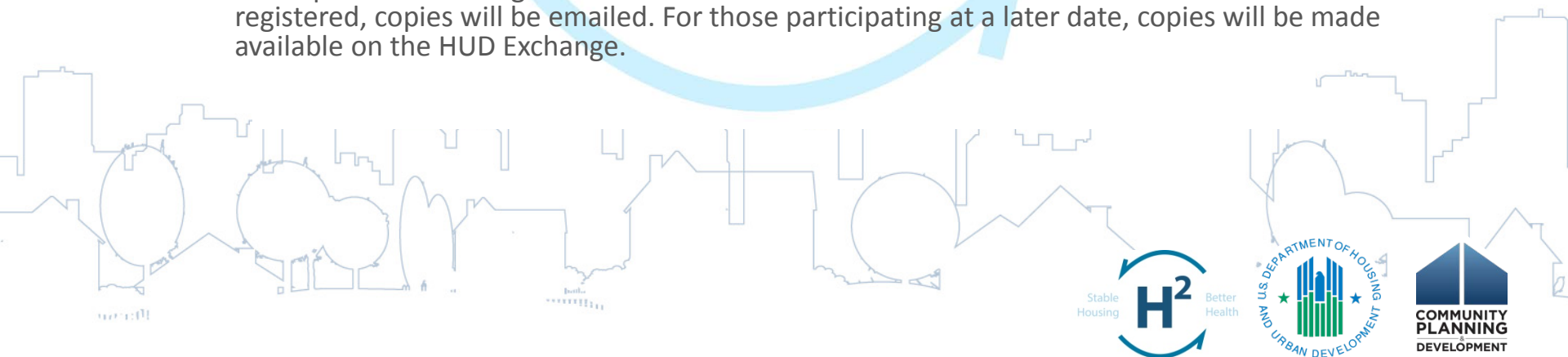
Question Box: You may enter your question into the question box at any time during the presentation. We will read questions aloud and answer some after each speaker and then during the allotted Q&A session.

## **Follow up questions:**

Contact information will be provided after each presentation and at the close of the webinar.

## **Materials:**

Slides presented during the webinar will be made available after the webinar. For those who registered, copies will be emailed. For those participating at a later date, copies will be made available on the HUD Exchange.



# H<sup>2</sup> Housing and Healthcare Technical Assistance

Roula K. Sweis, M.A., Psy.D, Supervisory Program  
Advisor, Office of the Assistant Secretary for CPD

**H<sup>2</sup>:** **H**ousing and **H**ealthcare TA - A Federal Partnership  
between HUD and HHS focused on *improving  
program participant access and effective utilization of  
mainstream healthcare services at the systems level.*



# Today's Presenters

- Roula K. Sweis, Supervisory Program Advisor, Office of the Assistant Secretary for CPD
- Dr. Cara James, Director, Office of Minority Health at the Centers for Medicare and Medicaid Services
- Kim Nettleton, Product Development – Capabilities, UnitedHealthcare Community & State
- Jessie Beebe, Health Services Specialist, Center for Housing and Health, AIDS Foundation of Chicago

