

HCV-HQS Remote Video Inspection: Best Practices

Unit Interior Rooms:
Bedrooms, Other Rooms Used for Living, All Secondary Rooms



Prepared by: BISCO, Inc., and Econometrica, Inc.

Introduction: Learning Outcomes

- **Unit Interior Rooms:** Bedrooms (Room Code 1), Other Rooms Used for Living (Room Codes 2–6), All Secondary Rooms.
- **Learning outcomes cover the following:**
 - Inspectable items in the Bedroom (Room Code 1).
 - RVI protocol to inspect each inspectable item in the Bedroom (Room Code 1).
 - Inspectable items in Other Rooms Used for Living (Room Codes 2–6).
 - RVI protocol to inspect each inspectable item in Other Rooms Used for Living (Room Codes 2–6).
 - Inspectable items in All Secondary Rooms.
 - RVI protocol to inspect each inspectable item in All Secondary Rooms.

Room Codes Used for Other Rooms Used for Living and Halls

Room Codes

- 1 = Bedroom or Any Other Room Used for Sleeping (regardless of the type of room)
- 2 = Dining Room
- 3 = Second Living Room, Family Room, Den, Playroom, TV Room
- 4 = Entrance Halls, Corridors, Halls, Staircases
- 5 = Additional Bathroom
- 6 = Other

Conducting the RVI: Bedroom or Room Code 1

- Electricity
- Electrical hazards
- Security
- Window condition
- Ceiling condition
- Wall condition
- Floor condition
- Lead-based paint (LBP)
- Smoke detectors
- Carbon monoxide (CO) detectors



Conducting the RVI: Bedroom or Room Code 1 Script

The inspector gives the proxy the following directions to inspect the Bedroom or Room Code 1:

- a. Enter the bedroom or room code 1 and give me the name and location of the bedroom.
- b. Moving slowly to your right, point the camera at the walls.
- c. Show me with your camera: You operating the windows.
- d. Show me with your camera: You operating the bedroom door.
- e. Show me with your camera: You operating the closet doors.
- f. Show me with your camera: You testing the outlets with your circuit tester.
- g. Show me with your camera: You operating the light switches and fixtures.



Conducting the RVI: Bedroom or Room Code 1 Script (continued)

The inspector gives the proxy the following directions to inspect the Bedroom or Room Code 1:

- a. Show me with your camera: The ceiling.
- b. Show me with your camera: The floor.
- c. Show me with your camera: The bedroom heat source.
- d. Show me with your camera: Any infestation.
- e. Show me with your camera: Any deteriorated paint.
- f. Show me with your camera: Garbage and debris.
- g. Show me with your camera: You testing the smoke detector and CO detector.
- h. Show me with your camera: You operating the call-for-aid and the length of the cord.



Video Clip: Bedroom Inspection



Walking into the bedroom.

Conducting the RVI: Other Rooms Used for Living and Halls (Room Codes 2–6)

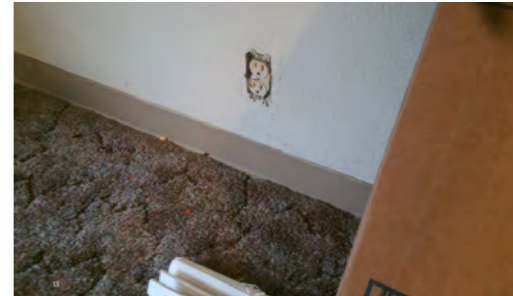
- Illumination
- Electrical hazards
- Security
- Window condition
- Ceiling condition
- Wall condition
- Floor condition
- LBP
- Smoke detector
- CO detector



Conducting the RVI: Other Rooms (Room Codes 2–6) (continued)

The inspector gives the proxy the following directions to inspect the room:

- a. Enter the room and give me the name and location of the room.
- b. Moving slowly to your right, point camera at the walls.
- c. Show me with your camera: You operating the windows.
- d. Show me with your camera: You operating the room door.
- e. Show me with your camera: You operating the closet doors.
- f. Show me with your camera: You testing the outlets.
- g. Show me with your camera: You operating the light switches and fixtures.
- h. Show me with your camera: The ceiling.



Conducting the RVI: Other Rooms (Room Codes 2–6) (continued)

The inspector gives the proxy the following directions to inspect the room:

- a. Show me with your camera: The ceiling.
- b. Show me with your camera: The floor.
- c. Show me with your camera: The room heat source.
- d. Show me with your camera: Any infestation.
- e. Show me with your camera: Any deteriorated paint.
- f. Show me with your camera: Any garbage and debris.
- g. Show me with your camera: You testing the smoke detector and CO detector.
- h. If it is a laundry area, show the washer and dryer hookups and dryer vent.



Video Clip: Dining Room Inspection



- Okay, good.

Video Clip: Hallway Inspection



and you'll be stepping into the hallway

Conducting the RVI: All Secondary Rooms Not Used for Living

- Applies if present (e.g., basement, unfinished attic, garage).
- Security.
- Electrical hazards.
- Other potentially hazardous features.



RVI Results

Using HUD Forms 52580-a or 52580 or a data collection device (DCD), the remote inspector will determine the results as one of the following:

Pass <ul style="list-style-type: none">• No deficiencies.	Fail <ul style="list-style-type: none">• Non-life-threatening deficiencies are present (e.g., missing discharge pipe on water heater TPR valve).• Life-threatening deficiencies are present (e.g., exposed main electrical wires).
Pass With Comment <ul style="list-style-type: none">• Some deficiencies but none are life-threatening.	Inconclusive <ul style="list-style-type: none">• For example, appliances are present, but utilities are shut off on initial inspection.

RVI Results (continued)

- The inspection results will be available immediately.
- The inspector will send the unit's results (i.e., Pass, Pass With Comment, Fail, or Inconclusive) to the proxy via email.
- If the inspection receives a Fail status, the inspector will inform the proxy of what needs to be corrected to receive a Pass status.
- If the proxy wants a same-day reinspection, the proxy tells the inspector during the call. The inspector will inform the proxy of available times.
- If the proxy wants a reinspection at a later date, they must call the public housing authority's Housing Quality Standards (HQS) office to schedule the reinspection.
- The proxy restores their preferred settings on their phone after the inspection and call are completed.

Conducting the RVI: Additional HQS Inspection Modules

- **Unit Interior Rooms:** Living Room, Kitchen, and Bathroom.
- Electric, Plumbing, Heating, Ventilation and Air Conditioning (HVAC) and Building Exterior.
- **General Health and Safety:** Common Areas, Elevators, and Site and Neighborhood.



Thank You
for Watching!

