



Preparing for Your 2015 Housing Inventory and Point-in-Time Counts

Michael Roanhouse, HUD

William Snow, HUD

Lauren Dunton, Abt Associates



The HIC and the PIT Count

The Housing Inventory Count (HIC) is a report that informs the homeless assistance community on the capacity to house persons who are homeless at local and national levels

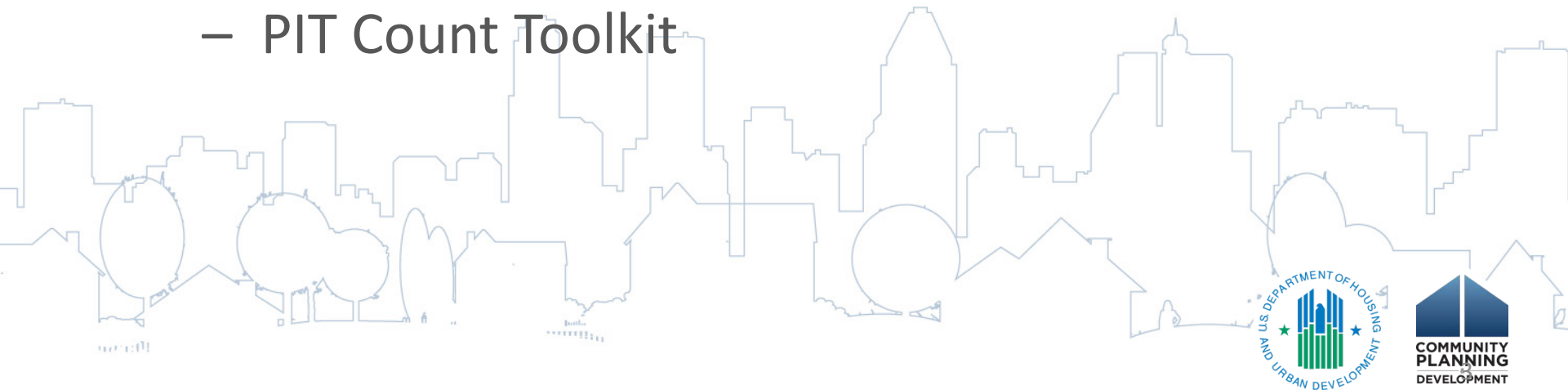
The Point-in-Time (PIT) Count provides the homeless assistance community with data needed to understand the number and characteristics of persons who are homeless at one point-in-time



Changes to Data Collection

HUD has updated and improved data collection standards and guidance for PIT counts

- New PIT Methodology Guide:
 - Includes 14 HUD Standards for all PIT counts and new methodology and PIT planning guidance
- PIT Count Toolkit



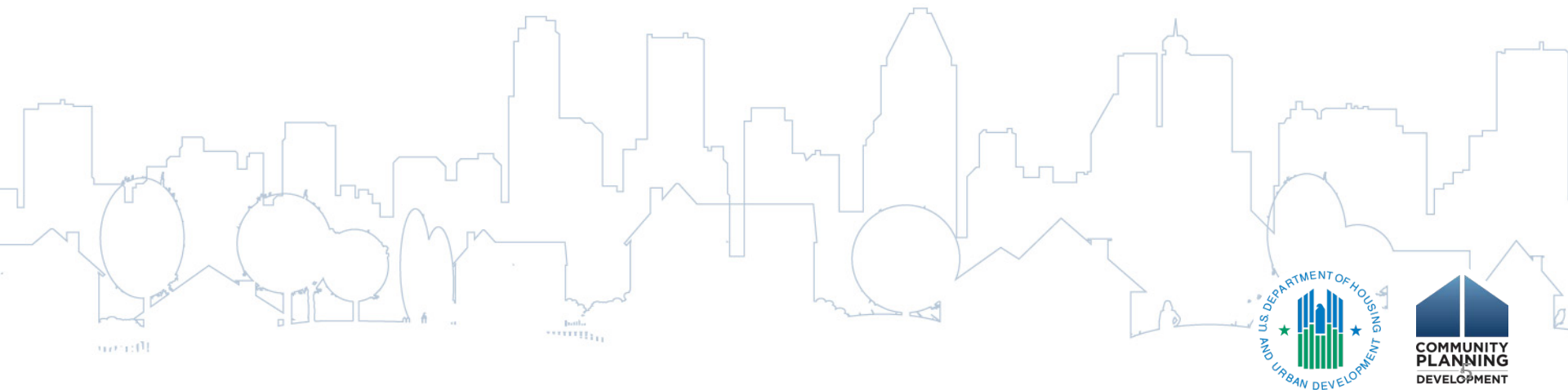
Updated Guidance on PIT Count Methodology

Notice for Housing Inventory Count (HIC) and Point-in-Time (PIT) Data Collection for Continuum of Care (CoC) Program and the Emergency Solutions Grants (ESG) Program

All CoCs should review: includes information
that must be collected to successfully
complete the 2015 HIC and PIT count



Housing Inventory Count (HIC)



What to Include in the HIC

Only projects with beds and units dedicated to serving homeless persons, meaning:

1. primary intent of program is to serve homeless persons
2. program verifies homeless status as part of its eligibility determination
3. actual program clients are predominantly homeless



Changes to HIC for 2015

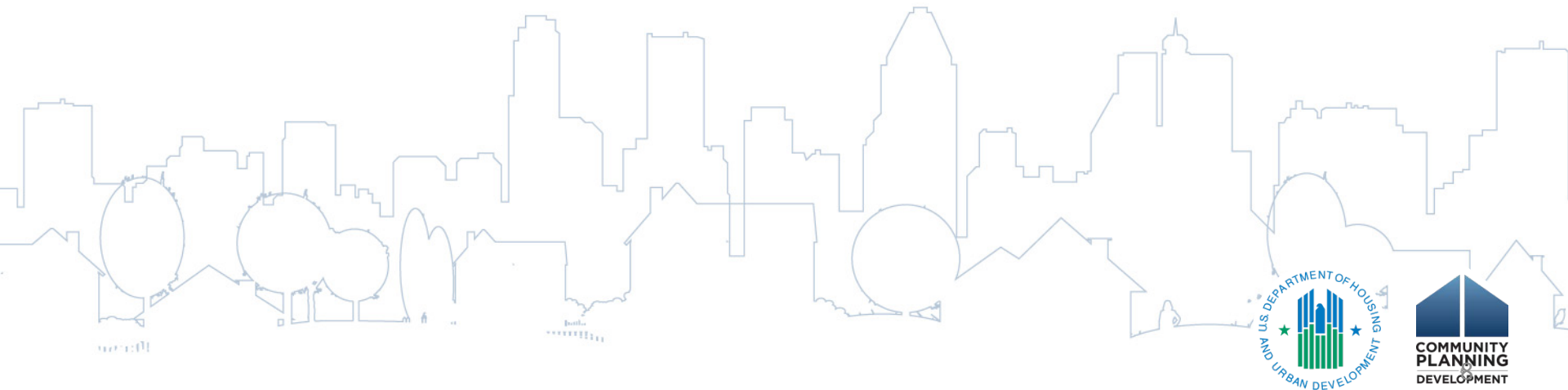
CoCs will be required to enter their addresses for all projects, except Victim Service provider projects

References to HMIS Data Standards have been updated to be consistent with HUD's 2014 HMIS Data Standards

CoCs with overflow beds should report the total number of overflow beds that were available for occupancy on the night of the inventory count



Point-In-Time Count (PIT)



PIT Count Guidance

CoCs required to conduct PIT counts biennially during last 10 days in January

Must be conducted in compliance with HUD standards and [PIT Count Methodology Guide](#)

- CoCs will be required to identify in HDX the methodologies used for their 2015 PIT count

CoCs are strongly encouraged to use HMIS to generate their sheltered count where possible



Sheltered PIT Count

All persons who meet the criteria at 24 CFR 578.3 of the Homeless Definition Final Rule

Sheltered homeless persons

Emergency shelters

(including persons assisted with hotel and motel vouchers)

Transitional housing

Safe Havens



Unsheltered PIT Count

Include all persons who meet criteria at 24 CFR 578.3 of the Homeless Definition Final Rule

Unsheltered homeless persons

Primary nighttime residence is a public place not designated for or ordinarily used as a regular sleeping accommodation for human beings, including: car, park, abandoned building, bus or train station, airport, or camping ground



People to NOT Include in PIT Count

Do not include people residing:

- in PSH projects (including VASH) and RRHD projects
- in locations not listed on the HIC (i.e., beds/units not dedicated for homeless)
- temporarily with family or friends
- in housing they rent or own (permanent housing), including rental housing with RRH assistance
- People residing in institutions



Changes to PIT Count for 2015

CoCs must report on:

- Youth households (persons under age 25), youth parents and their children, as well as unaccompanied youth
- Sheltered and unsheltered chronically homeless veterans and chronically homeless veteran families

Expanded transgender categories

Clarification when reporting on persons counted under “multiple races”



Collection and Reporting Youth in the PIT Count: 2015

Youth Households					
	Sheltered			Unsheltered	Total
	ES	TH	SH		
Total number of households					
Number of parenting youth households					
Number of unaccompanied youth households					
Total number of persons					
Total number of persons in parenting youth households					
Number of parenting youth (youth parents only)					
Number of parenting youth (under age 18)					
Number of parenting youth (age 18 to 24)					
Number of children with parenting youth (children under age 18 with parents under age 25)					
Total number of unaccompanied youth					
Number of unaccompanied children (under age 18)					
Number of unaccompanied young adults (age 18 and 24)					

New reporting requirements: Report subset of data on:
Parenting Youth
Unaccompanied Youth

Parenting youth (by age groups) and their children

Unaccompanied Youth (by age groups)



Collection and Reporting Youth in the PIT Count: 2015

Gender (youth parents and unaccompanied youth only)	Sheltered	Unsheltered	Total
Female			
Male			
Transgender (male to female)			
Transgender (female to male)			
Ethnicity (youth parents and unaccompanied youth only)	Sheltered	Unsheltered	Total
Non-Hispanic/Non-Latino			
Hispanic/Latino			
Race (youth parents and unaccompanied youth only)	Sheltered	Unsheltered	Total
White			
Black or African-American			
Asian			
American Indian or Alaska Native			
Native Hawaiian or Other Pacific Islander			
Multiple Races			

Demographics is limited to the youth (excludes children with parenting youth)



Resources

- [*Notice for Housing Inventory Count \(HIC\) and Point-in-Time \(PIT\) Data Collection for Continuum of Care \(CoC\) Program and the Emergency Solutions Grants \(ESG\) Program*](#)
- [*PIT Count Methodology Guide*](#)
- [*PIT Tools*](#)
 - Survey tools
 - Extrapolation tool
 - etc.



Questions

Submit Questions to HUD's Exchange's Ask-a-Question at:

<https://www.hudexchange.info/get-assistance/my-question/>

Please note: Due to the high volume of questions, please read the regulations and the training materials provided prior to submitting your question to Ask-a-Question

