



Overview of Incorporating Green Infrastructure into Metropolitan Sewer District's Project Groundwork

Climate Resilience Webinar Series



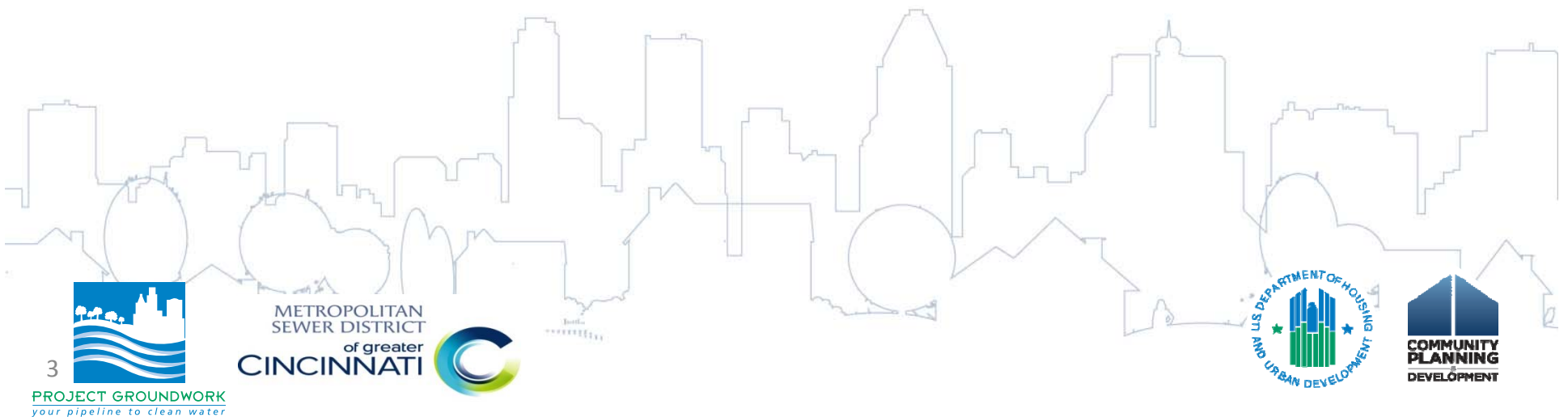
U.S. Department of Housing and Urban Development

Disclaimer

- This presentation is intended to provide communities and states with the tools and information to help in climate resilience planning and activities.
- Information presented in this webinar is independent of the Notice of Funding Availability (NOFA) for the National Disaster Resilience Competition (NDRC). While we expect that this information will be useful to interested communities and eligible applicants, *it should not be construed as the definitive word on any singular approach to resilience.*
- All NOFA NDRC questions should be sent to: resilientrecovery@hud.gov

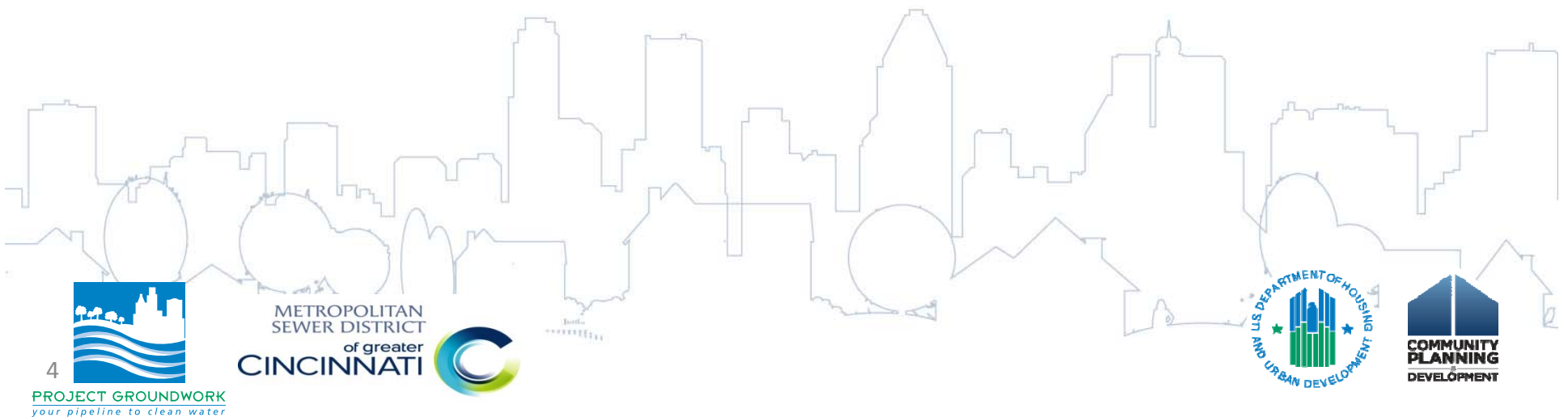
Presenter

- *Metropolitan Sewer District of Greater Cincinnati*
 - *Cheri Bush, Supervising Engineer*



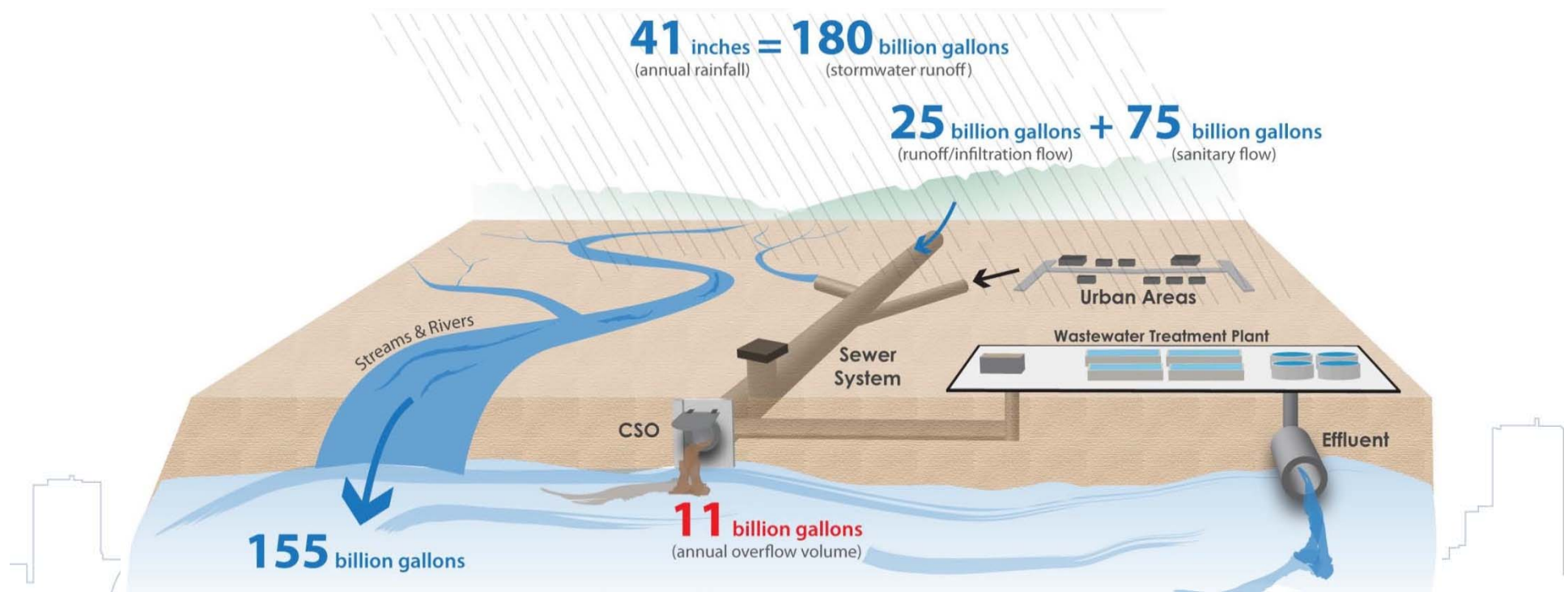
Agenda

1. Overview of MSD's Project Groundwork
2. Lick Run Project
3. Benefits
4. Questions



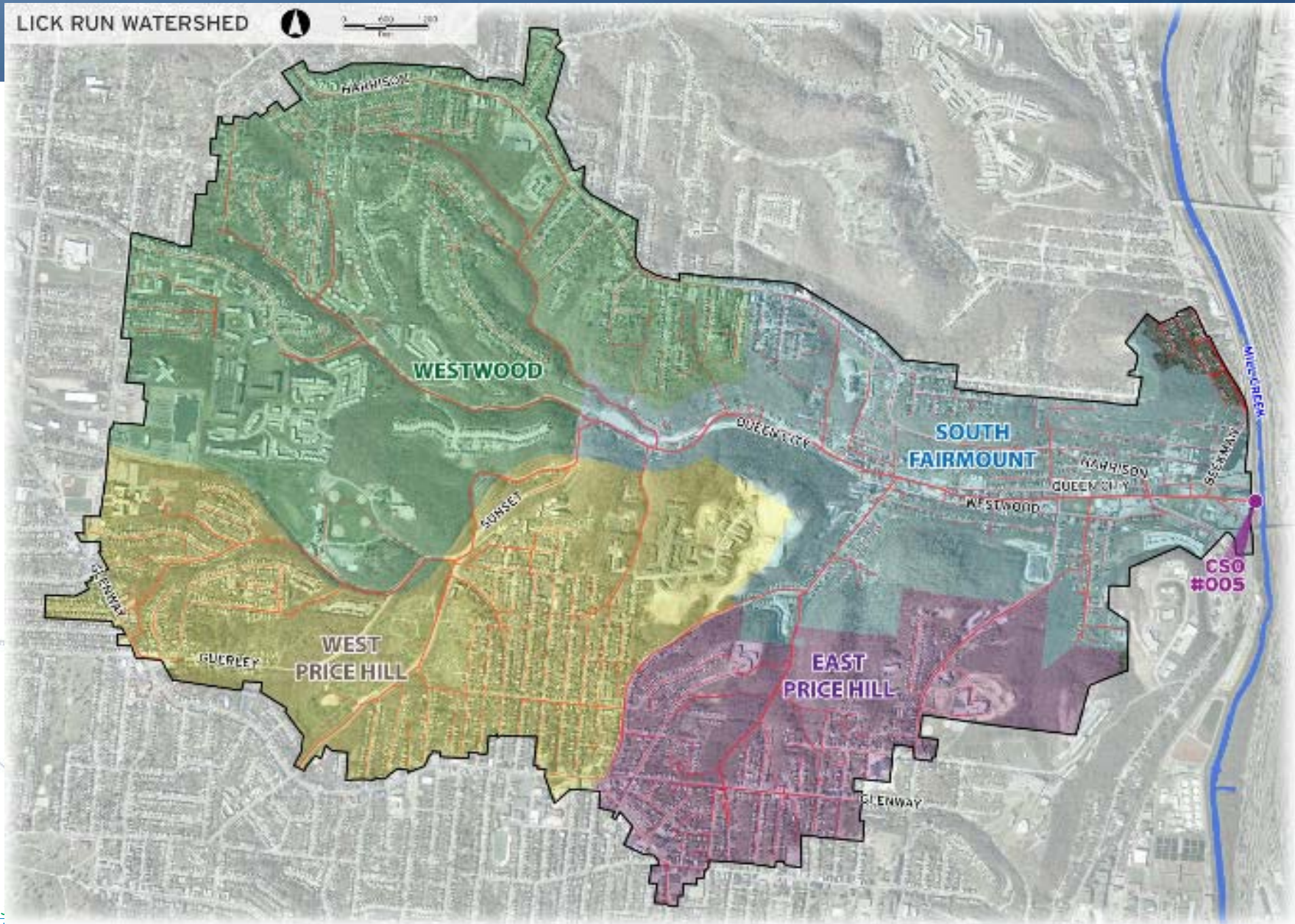
Overview of Project Groundwork

MSD is under a federal mandate (Consent Decree) to reduce sewer overflows into local streams and rivers.



Combined sewers carry both sewage and stormwater in the same pipe.

Project Groundwork - Lick Run



A community in need of transformation

Declining population and households have resulted in physical decline, foreclosure, and vacancy.



Assuming current trends, the rate of household decline equates to a loss of 200 households within 1 mile, resulting in a **loss** of more than **\$5.7 million** (in 2008 dollars)

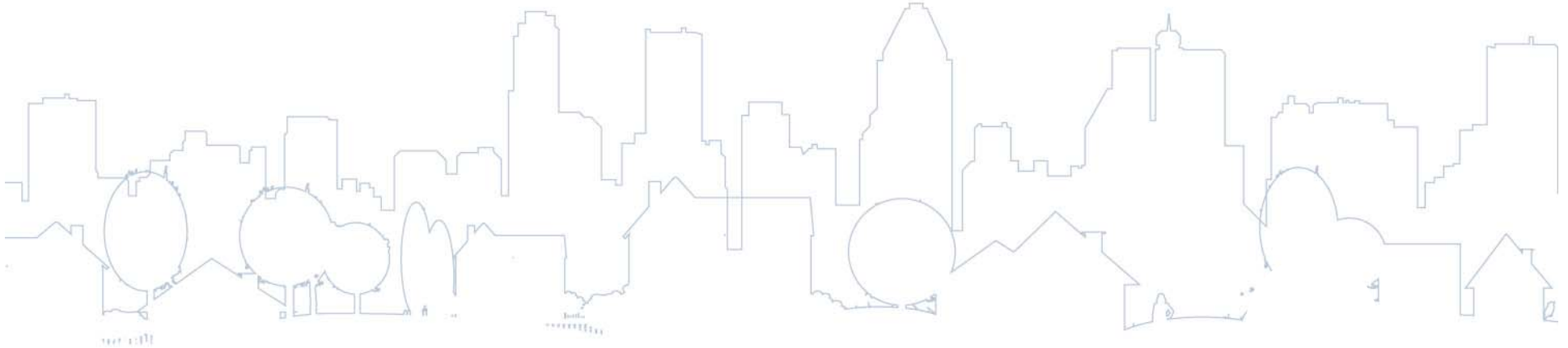


PROJECT GROUNDWORK
your pipeline to clean water

METROPOLITAN
SEWER DISTRICT
of CINCINNATI



Lick Run – MSD Projects



Lick Run Hillside Stormwater Conveyance



Before Construction



After Construction

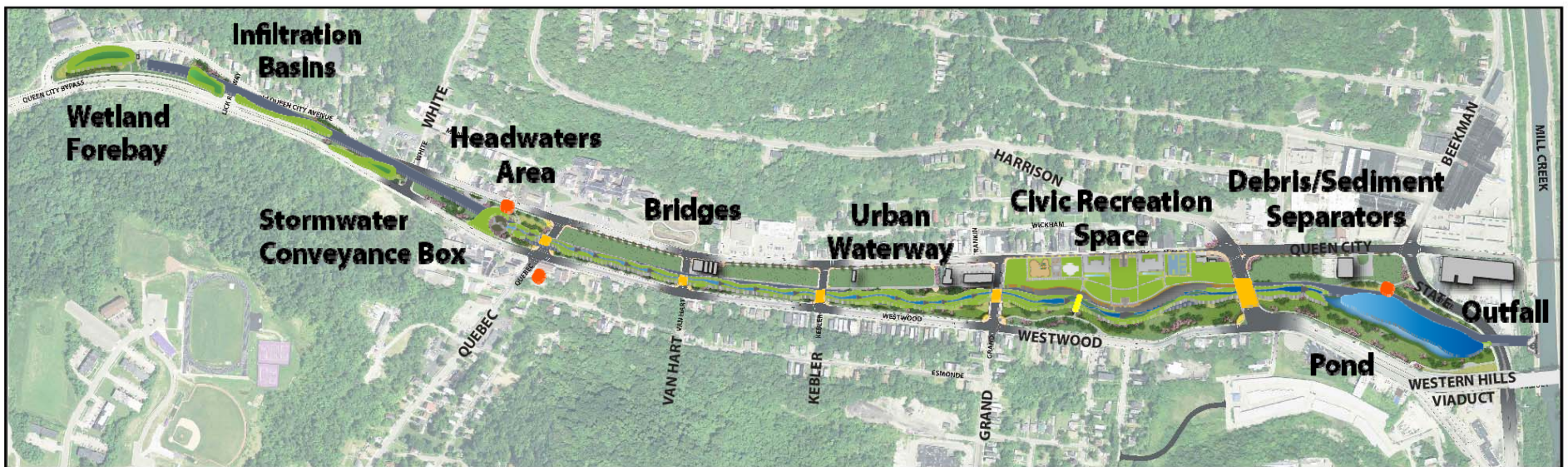


9
PROJECT GROUNDWORK
your pipeline to clean water

METROPOLITAN
SEWER DISTRICT
of greater
CINCINNATI



Lick Run – Urban Waterway



PROJECT GROUNDWORK
your pipeline to clean water

METROPOLITAN
SEWER DISTRICT
of greater
CINCINNATI



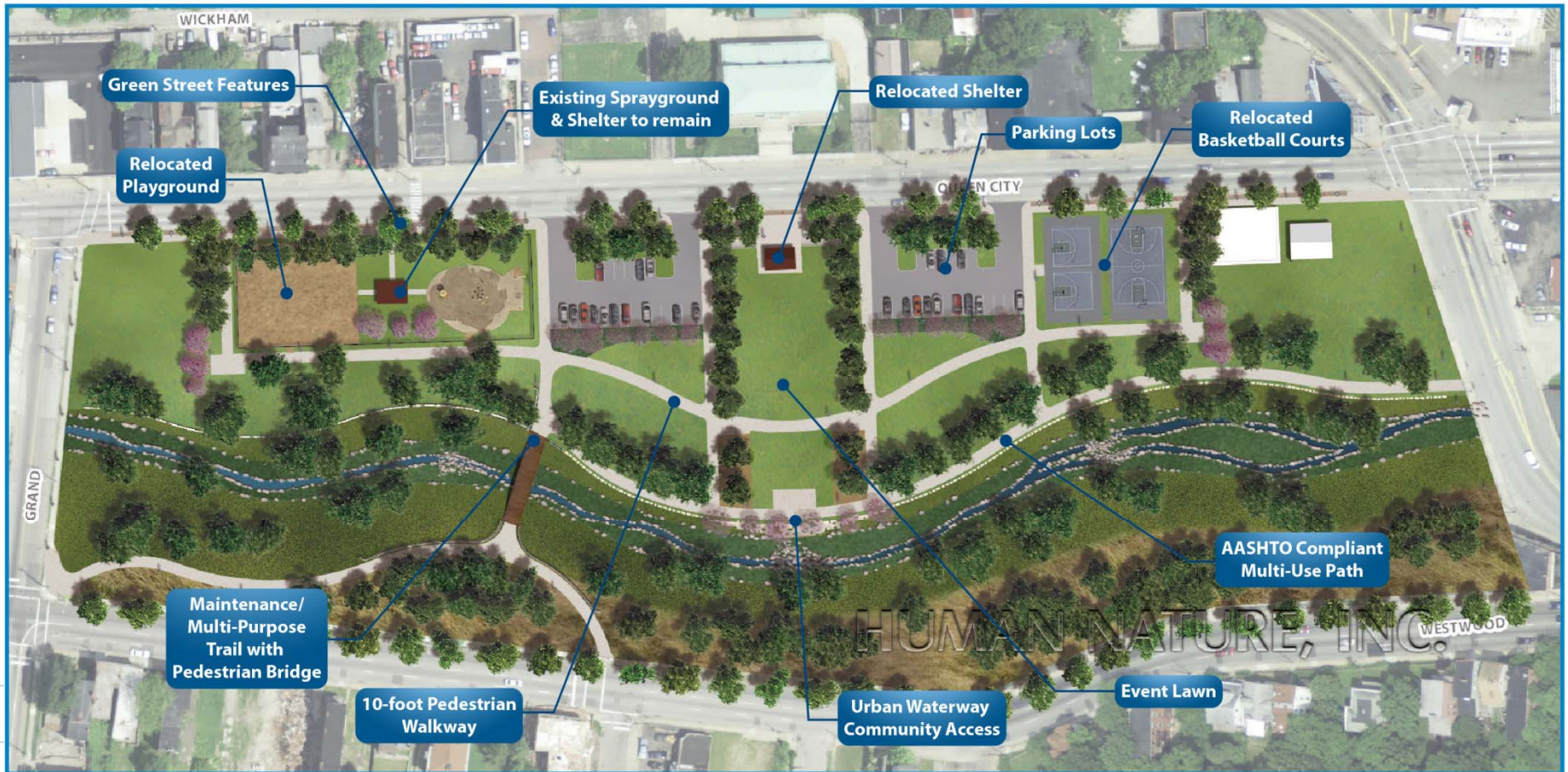
METROPOLITAN
SEWER DISTRICT
of greater
CINCINNATI



PROJECT GROUNDWORK
your pipeline to clean water

Future configuration of vicinity

Community involvement is critical for success.



PROJECT GROUNDWORK
your pipeline to clean water

METROPOLITAN
SEWER DISTRICT
of greater
CINCINNATI



Added Benefits

- Improved water quality
- New jobs (construction/trade jobs)
- Opportunities for neighborhood revitalization



Policy Support to continue improvement

MSD and City of Cincinnati Department of Planning and Buildings are collaborating on addressing the stormwater management issues and green practices through following tools and policies.

Land Development Code

- The new Land Development Code (LDC) is aimed at allowing more mixed use developments and making the city more pedestrian friendly. The Code consists of several new and revised zoning districts that contribute to walkable neighborhoods and pedestrian friendly commercial districts.

Stream Corridor Setback Overlay District

- The City is currently working on incorporating a riparian corridor setback overlay district. It has been included into the LDC second draft that was released to the public in October.

Light Impact Development Standards

- This chapter will address the following to reduce stormwater runoff: Parking lot design standards, pavement materials, design and BMPs, streetscape BMP standards, onsite BMPs standards to reduce stormwater runoff, and construction phase and post-construction phase BMPs standards.

Form-Based Code

- Form-Based Code is another tool that has the ability to impact both the lot area and the streetscape to create a walkable environment green transportation practices.

Questions ?

For more information about MSDGC's program,
please see www.projectgroundwork.org

Pedestrian Bridge

Safe mid-block waterway crossing

Multi-Purpose Access Path

maintenance access

Lighting
for public safety

Urban Waterway System

stormwater conveyance/CSO
reduction/water quality

Multi-Purpose Access Path

maintenance access

Lick Run -Civic Recreation Hub



PROJECT GROUNDWORK
your pipeline to clean water

METROPOLITAN
SEWER DISTRICT
of greater
CINCINNATI

