



Community Development Block Grant National Disaster Resilience (CDBG- NDR) Competition

NOFA Partner Requirements

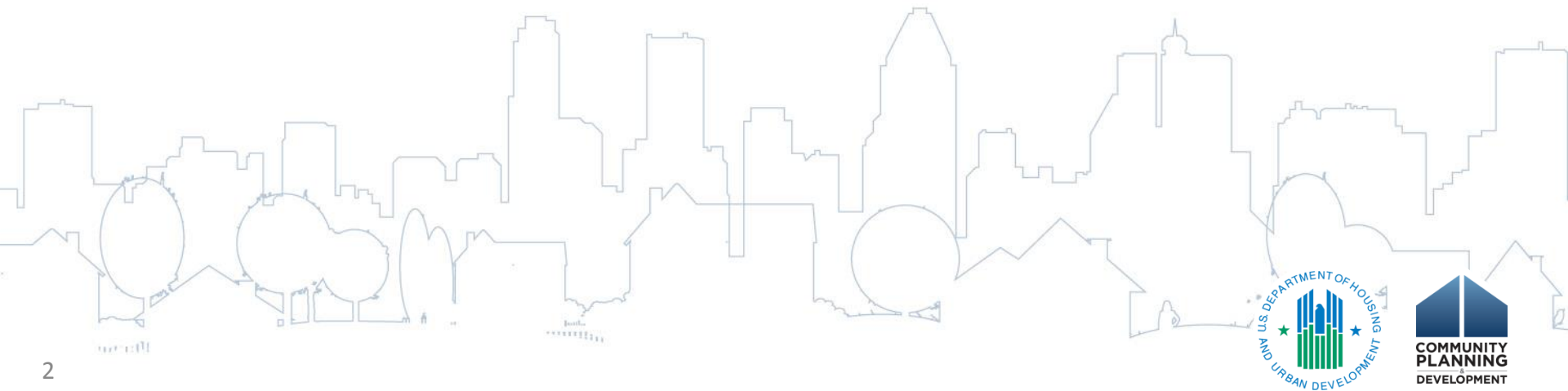
Presenters

Office of Community, Planning and Development

- Meg Barclay – Office of Block Grant Assistance

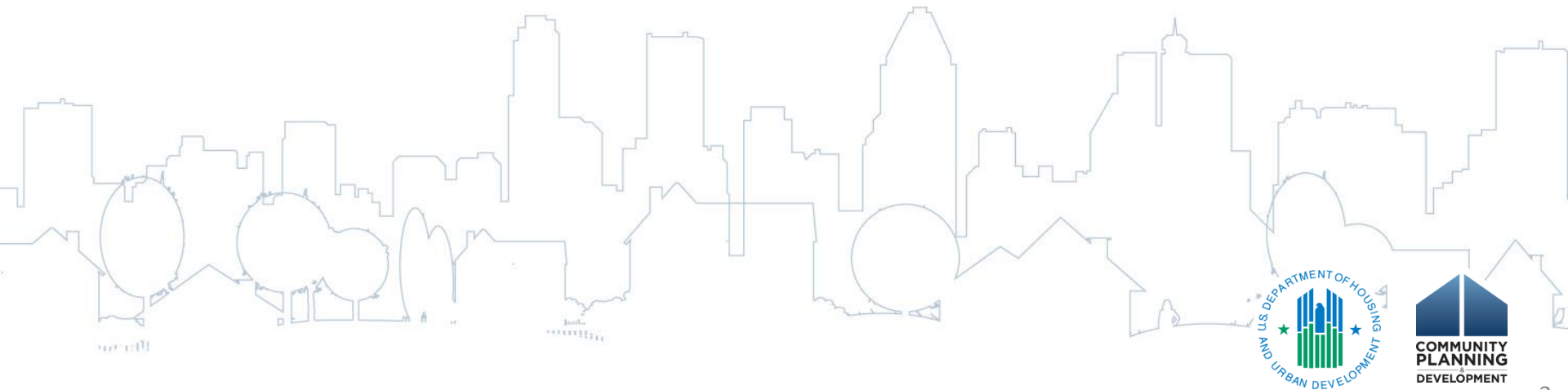
Office General Counsel

- Makani Drummond



Agenda

1. Overview of the NDRC and the Role of Partners
2. What is a Partner?
3. NDRC NOFA Partner Requirements
 1. Partner documentation
 2. Partners and the NDRC NOFA Rating Factors
4. Partners and Post-Award Requirements
5. Resources



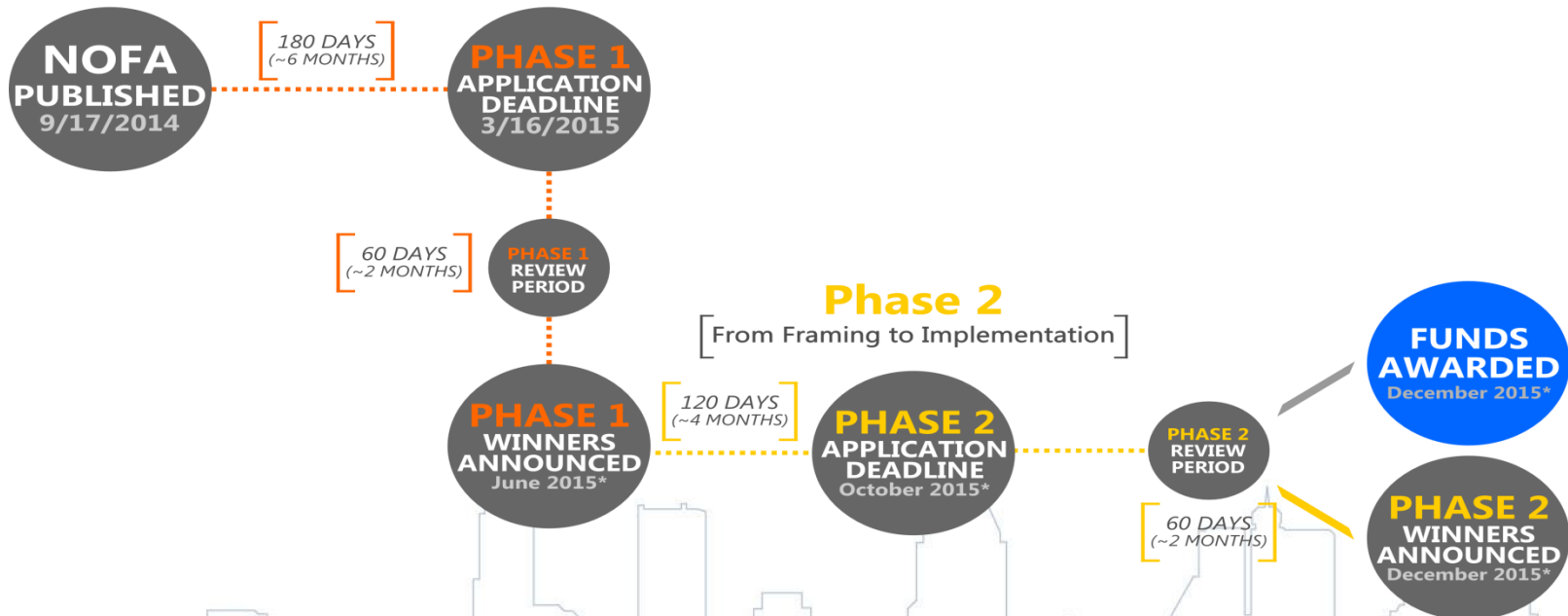
NDRC Overview

- The National Disaster Resilience Competition (NDRC) makes available nearly \$1 billion to communities that have been impacted by natural disasters **between 2011-2013**.
- The competition encourages communities to not only consider how they can recover from a past disaster but also how to avoid future disaster losses...**to be more Resilient**
- Applicants need to link or “tie-back” their proposals to the disaster from which they are recovering, as well as demonstrate how they are reducing future risks and advancing broader community development goals within in their target geographic area(s).

NDRC Overview

Phase 1

[Framing Unmet Recovery Needs, Vulnerabilities, and Community Development Objectives]



**Note: These dates are tentative and subject to change at HUD's discretion*



Overview of the NDRC and the Role of Partners

- The Role for Partners in the NDRC –
 - Narrative responses to some factors consider partners, such as:
 - Capacity: Partners may bring capacity that Applicant’s in-house team lacks
 - Soundness of Approach: Partners’ unique skills may add depth to an application
 - Leverage: Partners can bring resources that aid in implementation
 - Partners are encouraged but not required



What is a Partner?

NOFA Section I.C.8 reads:

“Partner means a State, unit of local government, a nonprofit entity, a private developer, a financial institution, or other entity chosen by the Applicant to assist the Applicant in applying for funding or in carrying out a funding award or project under this NOFA, and which submits a letter of intent to assist in that capacity, and which may be referenced by the Applicant for purposes of demonstrating additional capacity for planning, design, financing, or implementation in applying for funding under this NOFA.”



What is a Partner?

- Although Partners may carry out aspects of a project, each grantee remains legally and financially accountable for the use of all CDBG-NDR funds.
- There is no limit to the number of partners per application as long as each partner satisfies the NOFA partner requirements
- A Partner may participate in more than one application



NDRC NOFA Partner Requirements

- The NOFA requires Applicants to discuss and demonstrate partnerships through:
 - Partner documentation (NOFA threshold requirement) and
 - Narrative exhibits
- The NOFA requires submissions related to partners at Phase 1 and Phase 2



Partner Requirements – Documentation

- Applicable Partner Documentation must be submitted to comply with the “Eligible Applicant” Threshold Requirement
- Partner Letter
 - Non-binding letter of intent to participate from the partner
 - Part of Phase 1 submission
- Partner Agreement
 - Binding agreement between Applicant and Partner
 - Part of Phase 2 submission



Partner Requirements – Procurement

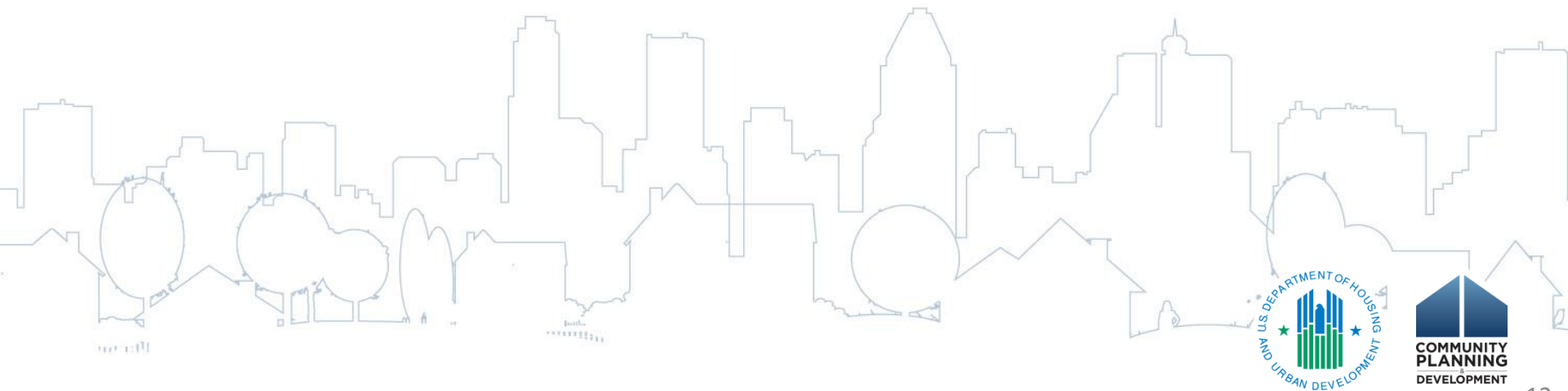
Partners and Procurement Standards

- Grantees that have adopted 24 CFR Part 85 procurement standards or that must otherwise comply with 24 CFR Part 85:
 - may secure services via non-competitive, single source procurement
 - Single source procurement permission does not apply to Grantees who wish to add Partners after an award under the NDRC. Procurement requirements under 24 CFR Part 85 or state or local law apply.
- Grantees that have not adopted 24 CFR Part 85 procurement standards or for which 24 CFR Part 85 does not apply:
 - applicable state and local procurement requirements must be followed
 - NDRC NOFA partnership documentation requirements apply, regardless of procurement method



Partner Requirements – Rating Factors

- Applicants that plan on seeking assistance from Partners are also required to provide information regarding Partners as part of the narrative responses to Rating Factors
 - Factor 1 – Capacity
 - Factor 3 – Soundness of Approach
 - Factor 4 – Leverage
 - Factor 5 – Long-term Commitment



Partner Requirements – Rating Factor Responses

Factor 1: Capacity

Phase 1

General Management Capacity

- Does the Applicant have experience working with and coordinating partners in previous projects of similar scope and scale?

Cross-disciplinary Technical Capacity

- What is the capacity of each Partner? What are their areas of expertise?
- Do Partners have experience in area-wide or comprehensive planning?
- Do Partners have the relevant capacity to assist the Applicant in quickly launching and implementing a major project?
- Do Partners have experience working with civil rights and fair housing laws?
- What is the Applicant's plan to regain capacity if a Partner drops out?

Community engagement Capacity

- Do your Partners have the capacity and experience to engage community stakeholders and harmonize contributions from diverse stakeholders?



Partner Requirements – Factor Responses

Factor 1: Capacity

Phase 2

Past Experience

- Past experience of Applicants and Partners must be discussed, including:
 - General Administrative Capacity
 - Technical Capacity
 - Community Engagement and Inclusiveness

Management Structure

- Management structure of each Partner
- Organization Chart, including role(s) of Partners
- Does Applicant capacity depend on Partners?
- Contingency plans in case of Partner failure
- Applicants may include one reference for each Partner



Partner Requirements – Rating Factor Responses

Factor 3: Soundness of Approach (Phase 1 & 2)

Phase 1

Consultation

- How has consultation and collaboration with Partners shaped the proposal?

Phase 2

Project/Frame Correspond

- Is your proposal feasible?
- Are you and your Partners capable of implementing it?
- Does your proposal have an effective design?



Partner Requirements – Rating Factor Responses

Factor 4: Leverage & Outcomes

Phase 1

Leverage

- What local or regional Partners is the Applicant aware of that could address implementation and maintenance aspects of your response?

Committed Leverage Resources

- Are Applicants receiving direct financial assistance from Partners?

Phase 2

- For committed leverage resources, has the Applicant demonstrated that resources are “firmly committed”?
- Can the Applicant demonstrate “supporting commitments” from its Partners?

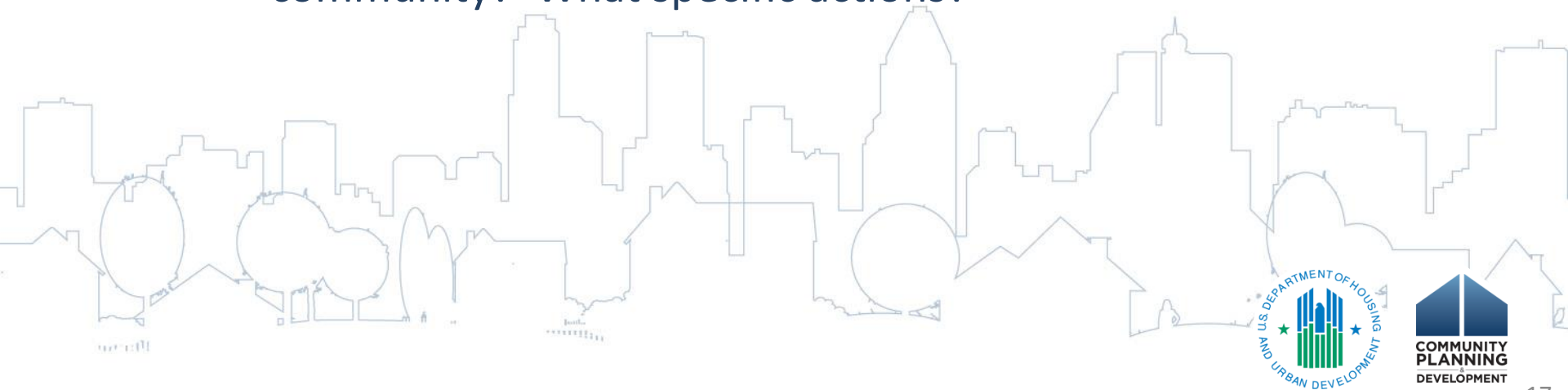


Partner Requirements – Rating Factor Responses

Factor 5: Regional Coordination and Long-term Commitment

Partners addressed in Factor 5 responses in Phase 2 only

- What actions are your Partners committing to undertake that are most likely to measurably improve resilience during the useful life of your project, or permanently?
- Do any of your governmental Partners need to take legislative action to enhance the resiliency of your community? What specific actions?



Partners and Post-Award Requirements

- Although Partners may carry out aspects of a project, each grantee under remains legally and financially accountable for the use of all CDBG-NDR funds
 - CDBG-NDR grantees may not delegate or contract out governmental fund management responsibilities, such as:
 - oversight
 - policy development, and
 - financial management
- Quarterly Performance Reporting in HUD's Disaster Recovery Grant Reporting system



Resources

Grants.gov

- www.Grants.gov
- Download the NOFA and supporting documents
 - Click “Apply for Grants” in the “Applicants” menu
 - Click “Download an Application Package”
 - Enter the CDFA Number to download (CDFA#: 14.272)
 - Click “Download”
 - Enter your email and click “Submit”
 - Click “Download Application Instruction” and “Download Application Package”

NOFA website

- www.hudexchange.info
- Link to NOFA on grants.gov
- All webinar recordings will be posted online

Data Resources

- www.HUDuser.org

Resilient recovery website

- www.hudexchange.info
- Resources and research on disaster resilience



Questions?

Send all questions about the NOFA
to:

ResilientRecovery@hud.gov

