



Innovative and Inclusive Citizen Engagement

Climate Resilience Webinar Series



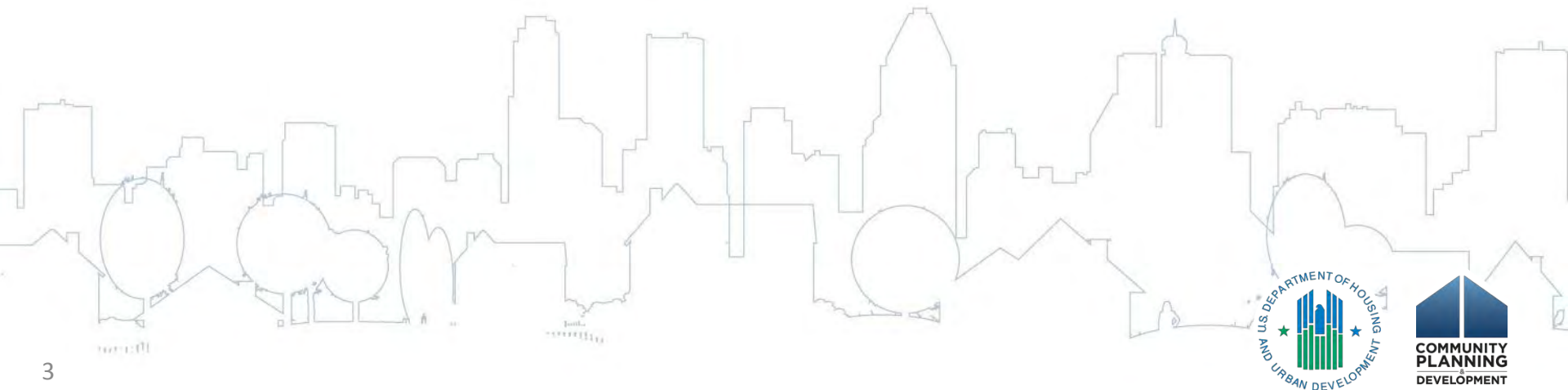
U.S. Department of Housing and Urban Development

Disclaimer

- This presentation is intended to provide communities and states with the tools and information to help in climate resilience planning and activities.
- Information presented in this webinar is independent of the Notice of Funding Availability (NOFA) for the National Disaster Resilience Competition (NDRC). While we expect that this information will be useful to interested communities and eligible applicants, *it should not be construed as the definitive word on any singular approach to resilience.*
- No NOFA NDRC questions will answered during this presentation.
- All NOFA NDRC questions should be sent to:
resilientrecovery@hud.gov

Presenters

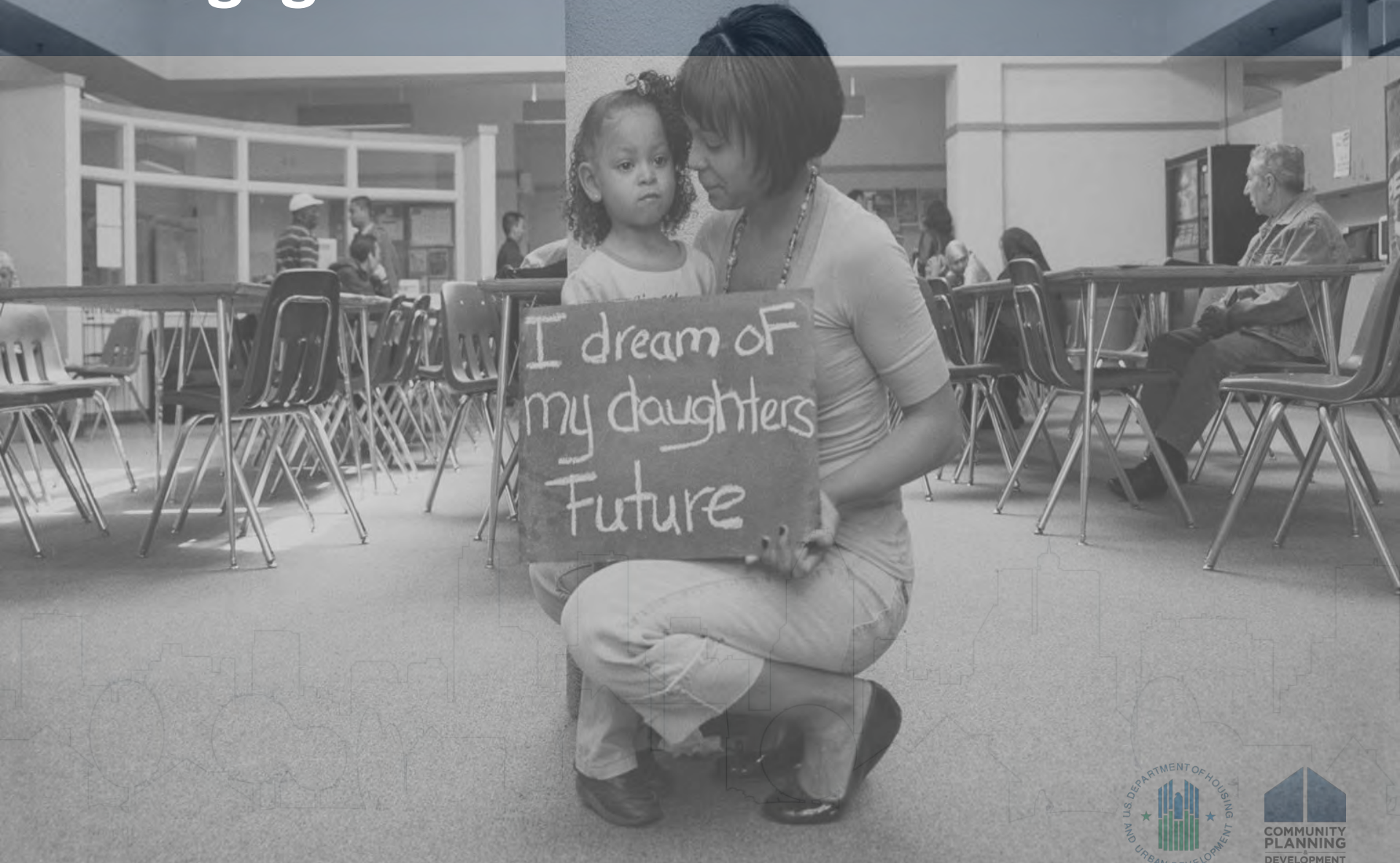
- *Policy Link*
 - *Sarita Turner, Senior Associate*
- *South Florida Regional Planning Council*
 - *James F. Murley, Executive Director*



Agenda

1. Overview of citizen participation
2. Why engagement is important
3. Strategies for success
4. Examples and best practices of innovative citizen participation
5. Questions

Engagement? For What?



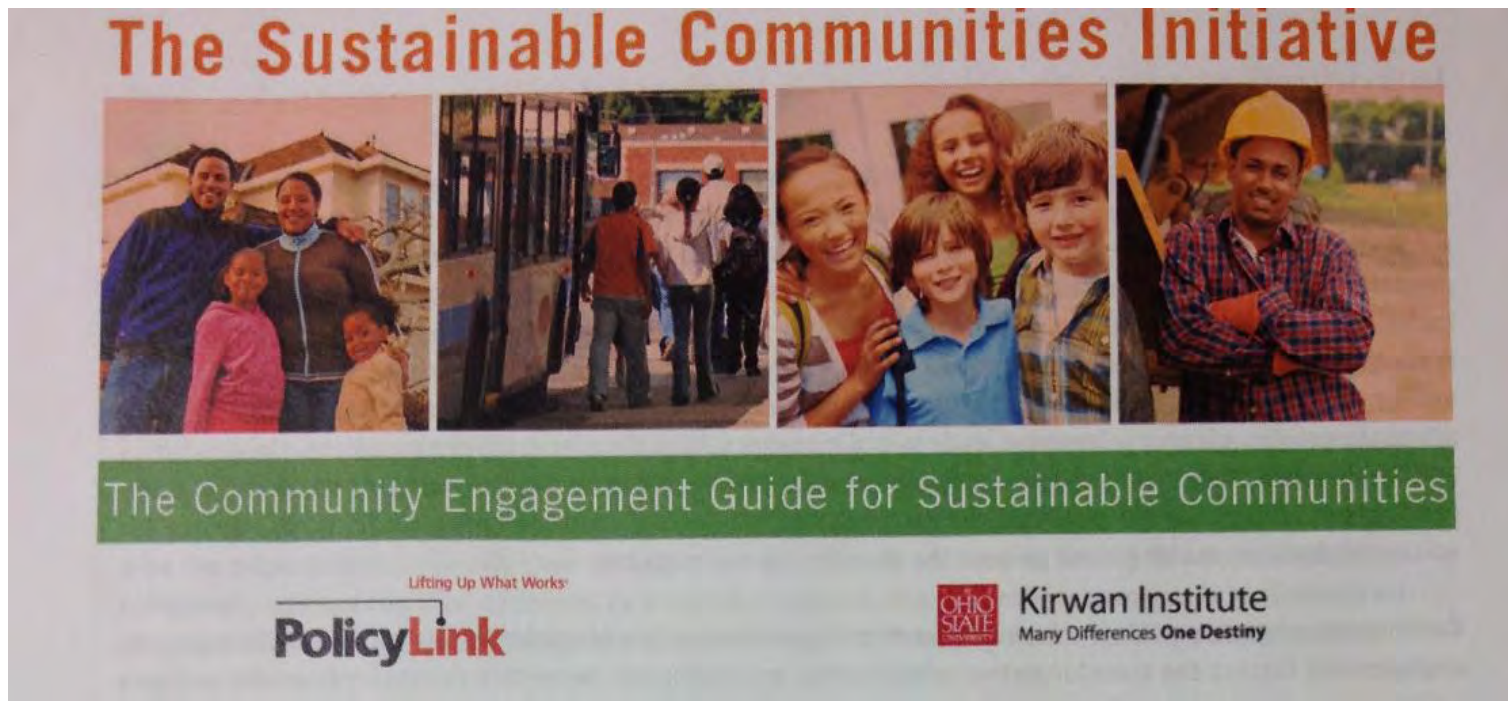
PolicyLink is a research and action institute
dedicated to **lifting up what works.**

PolicyLink

Lifting Up What Works®



Community Engagement Guide

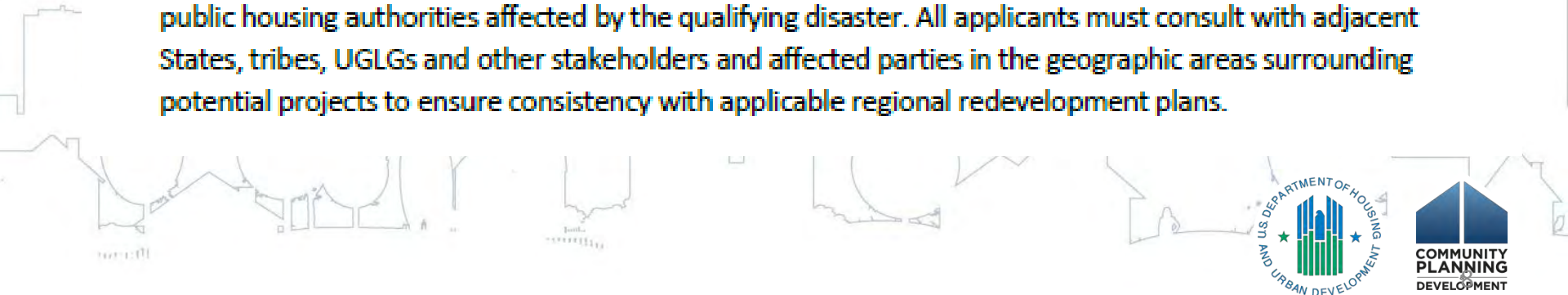


www.policylink.org

NDRC NOFA Appendix I

Appendix I - Consultation Summary

Applicants' citizen participation and consultation efforts for CDBG-NDR applications must be carried out in such a way to sufficiently assess the recovery needs, community development issues and vulnerabilities in areas affected by the qualifying disaster and identify and design an approach that will directly address these needs. In addition to requirements at 24 CFR 91.110, States must consult with all disaster-affected Units of General Local Government (UGLG), including any CDBG entitlement communities not identified as eligible applicants for CDBG-NDR funds as well as any other local or regional agencies with metropolitan-wide planning responsibilities (particularly for problems and solutions that go beyond a single jurisdiction) that operate in disaster-affected counties. Eligible UGLGs must follow consultation requirements at 24 CFR 91.100, with the supplemental requirement to consult with adjacent UGLGs and other local or regional agencies with metropolitan-wide planning responsibilities (particularly for problems and solutions that go beyond a single jurisdiction), and local public housing authorities affected by the qualifying disaster. All applicants must consult with adjacent States, tribes, UGLGs and other stakeholders and affected parties in the geographic areas surrounding potential projects to ensure consistency with applicable regional redevelopment plans.



Community Engagement and Inclusiveness

- Regional collaboration
- Cross-disciplinary collaboration
- Community engagement and outreach, especially with vulnerable populations, including persons with disabilities and Limited English Speaking populations
- Project coordination in partnership with other key stakeholders
- Consultation and stakeholder involvement during need determination, design, implementation, commissioning and evaluation phases of the project
- Working with other organizations



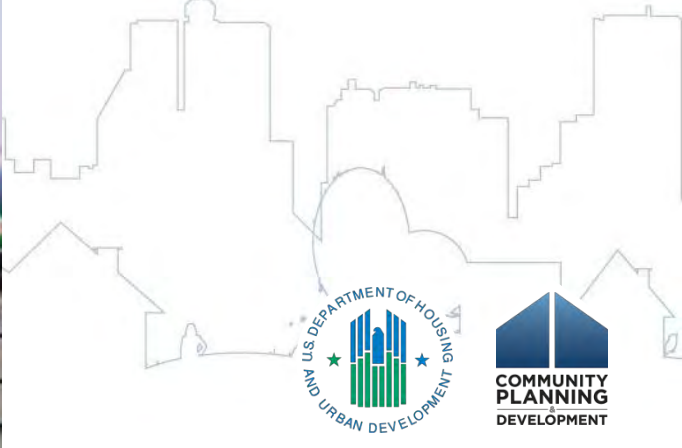
How are we defining success?



Why is engagement important?



What will our plans result?



Inclusive Planning

Results tremendous benefits



King County Engagement Continuum

Levels of Community Engagement

We inform	We consult	We engage in dialogue	We and community work together	Community directs action
-----------	------------	-----------------------	--------------------------------	--------------------------

Characteristics of Engagement

<ul style="list-style-type: none"> Primarily one-way channel of communication One interaction Term-limited to event Addresses immediate need of county and community 	<ul style="list-style-type: none"> Primarily one-way channel of communication One to multiple interactions Short to medium-term Shapes and informs county programs 	<ul style="list-style-type: none"> Two-way channel of communication Multiple interactions Medium to long-term Advancement of solutions to complex problems 	<ul style="list-style-type: none"> Two-way channel of communication Multiple interactions Medium to long-term Advancement of solutions to complex problems 	<ul style="list-style-type: none"> Two-way channel of communication Multiple interactions Medium to long-term Advancement of solutions to complex problems
--	--	--	--	--

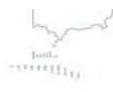
Strategies

Media releases, brochures, pamphlets, outreach to vulnerable populations, ethnic media contacts, translated information, staff outreach to residents, new and social media	Focus groups, interviews, community surveys	Forums, advisory boards, stakeholder involvement, coalitions, policy development and advocacy, including legislative briefings and testimony, workshops, community-wide events	Co-led community meetings, advisory boards, coalitions, and partnerships, policy development and advocacy, including legislative briefings and testimony	Community-led planning efforts, community-hosted forums, collaborative partnerships, coalitions, policy development and advocacy including legislative briefings and testimony
--	---	--	--	--

Strategies for success

The logistics of community engagement is critical for turnout and community interest. Paying attention to a number of logistical issues will enhance participation and improve the overall effort. Some things to consider:

Venue	Making meetings geographically close to communities or stakeholders is critical to get a good turnout. Choosing a site that is community centered may more familiar and comfortable for attendees. Does the venue accommodate for public parking and transportation?
Host	If inviting public officials make sure you have followed appropriate channels before inviting them to participate. Clarify in advance the role for County Executive, Council members, Public Information Officer and community members prior to the engagement.
Staffing	Will you use program staff, other King County staff or partner staff to help with set up, welcoming, and meeting facilitation?
Budget	Is your budget adequate to provide resources for advertising, communication and promotion, rental space, refreshments/food, transportation, child care, translation/interpretation?
Accessibility	Is the location wheelchair accessible and code approved for people with disabilities?
Time	Do you have staff that can attend evening or weekend meetings? Can you accommodate community members to hold evening or weekend meetings?



Strategies for success

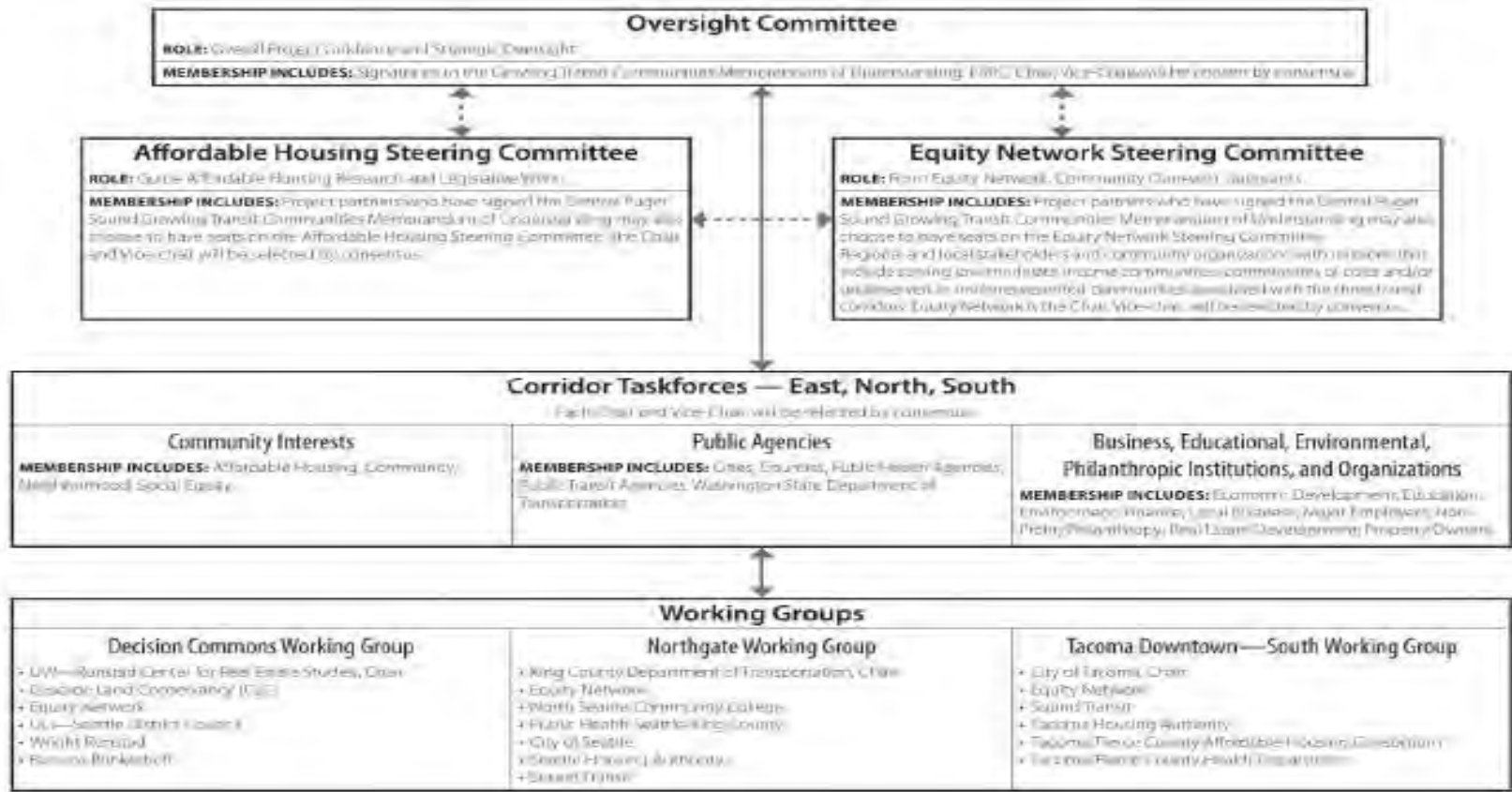
Reciprocity and capacity building



Strategies for success

FIGURE 1

Central Puget Sound Growing Transit Communities Consortium — Organizational Framework



Strategies for success

Data Driven Assessment

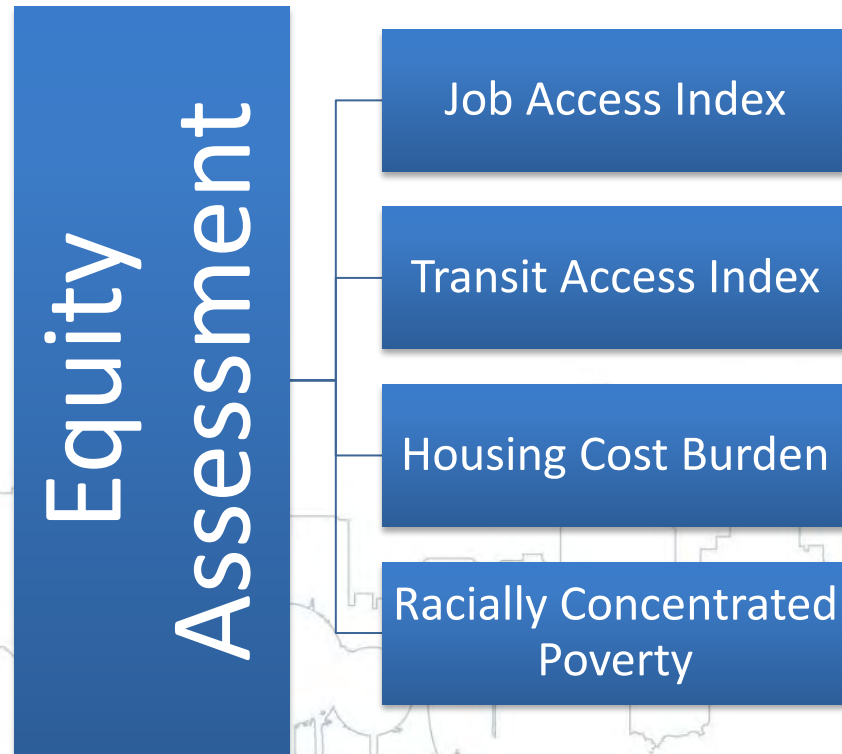


Photo by Paloma Pavel



Data to Build Equitable Resilient Communities



nationalequityatlas.com

Data in Action: [Data Drives Economic Opportunity in New Orleans >](#)

Data revealing 52 percent of black men in New Orleans are jobless led Mayor Landrieu to launch an ambitious new jobs plan.

[An Equity Profile of Southeast Florida](#)

Communities of color are driving Southeast Florida's population growth. But wide racial gaps in income, health, and opportunity place its future at risk.

[Data in Action: Rhode Island](#)

Our Equity Profile showing rising diversity and persistent barriers to opportunity for communities of color spurred Governor Chafee to take action to ensure fair hiring and racial inclusion in government.

[Equity Profile: Houston Region](#)

Houston's economy is strong overall, but racial inequities in education, income, health, and opportunity—along with stagnant wages and rising inequality—place its future prosperity at risk.



Strategies for Success

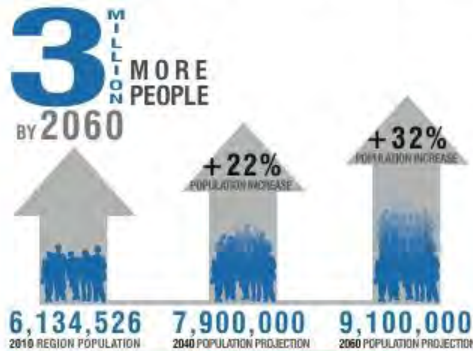
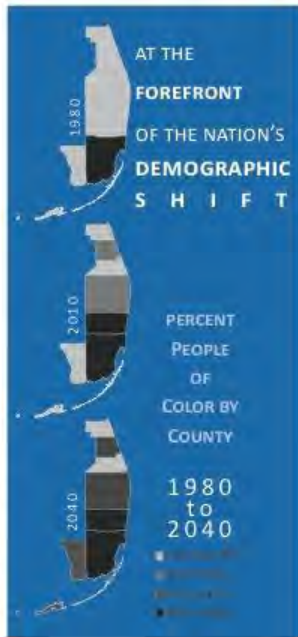
- Community leads – we support
- Reciprocity – share resources, hire community members
- Understand historical context – Don't take it personal
- Inclusive governance/shared decision-making
- Ask for help

Southeast Florida



The Region Today

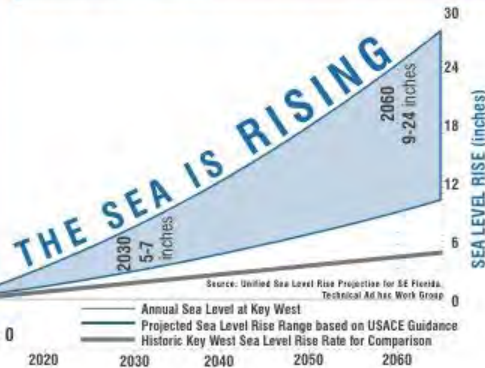
Our seven-county region is faced with a variety of challenges and opportunities. Here is information on where the region is today and a few trends and future impacts if these trends continue.



FUTURE TREND:

250+ SQUARE MILES

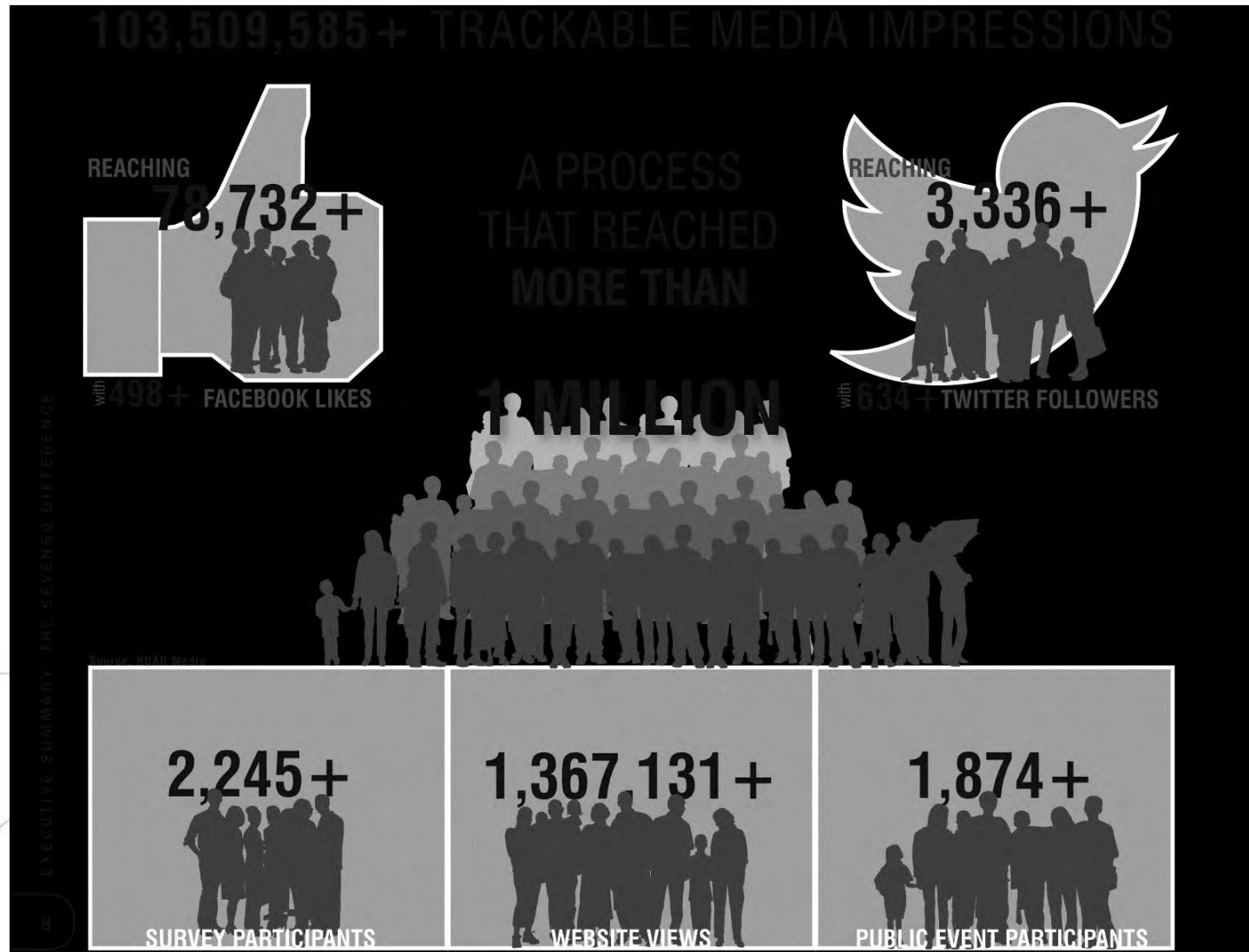
of additional farmland developed



EXECUTIVE SUMMARY: THE SEVENSDIFFERENCE

5

Public Involvement





SE Florida Prosperity Plan

[Overview](#)
[Partnership](#)
[Plan](#)
[Engage](#)
[Resources](#)
[Media](#)
[Contact](#)

Posted on [November 5, 2013](#)



Haitian-American Summit: "The Future in Focus"

Southeast Florida Regional Partnership & Haitian American Professionals Coalition (HAPC) invite the community to participate in the upcoming **Seven50 Haitian-American Summit: *Seven50: The Future in Focus***.

M	T	W	T	F	S	S
Oct 27	Oct 28	Oct 29	Oct 30	Oct 31	Nov 1	Nov 2

Preferred Scenario

The Online Scenario Modeler gave the region the ability to explore and vote on their preferred future scenario. In four months of voting mid-June through mid-October of 2013 the site was visited by over 100 people a week. Thousands got a chance to comment and weigh in on the scenarios throughout the scenario modeling process.



TREND: STAY THE COURSE

SUBURBAN EXPANSION

STRATEGIC UPGRADES

REGION IN MOTION



4%

19%

4%

73%

EXECUTIVE SUMMARY: THE SEVEN50 DIFFERENCE

10

Regional Initiatives

- Everglades & Waterways
- Balanced Mobility
- Climate Preparedness & Resilience
- Education & Workforce
- Economic Competitiveness
- Economic Opportunity



CLIMATE ACTION PLAN



7 Goal Areas
137 Initiatives



4 Counties
Regional Climate Action Plan



2 Regional Planning Councils
7 Livability Principles

local mitigation
strategy
- stormwater master
planning
- local comprehensive
plan

EXECUTIVE SUMMARY: REGIONAL INITIATIVES

19

LOCAL & REGIONAL ALIGNMENT OF PLANNING WORKING TOGETHER ON CLIMATE INITIATIVES



Compact Commitments

Framework:

- Collaborate on Policy
- Develop Regional Baselines for Planning
- Create Regional Climate Action Plan
- Host Annual summits



Establishment of Staff Steering Committee

Two representatives from each county government

One municipal representative from each county

Non-voting representatives

- Facilitator
- Regional Agencies
- Environmental



The Nature Conservancy



A Busy Year...



Miami-Dade Sea Level Rise Task Force (R 599-13)

- Created July 2013
- 7 members, 14 meetings since November 2013
- Report & recommendations to be presented to the Board in July

New Legislation

- R- 451-14 (May 2014): Requires County infrastructure projects to consider impacts of SLR
- Pending Ordinance (July 2014): requiring infrastructure –related Agenda items to include statement that SLR has been considered

WASD/USGS Ground Water/Surface Water Modeling Tool expected Soon

6th Annual SE Florida Regional Climate Leadership Summit - October 1-2, 2014, Miami Beach Convention Center



Looking Ahead...

Continue Promoting and Implementing RCAP
Compact Website Update
Sea Level Rise Work Group to Reconvene
Compact Implementation Workshops

- Solar, Water Supply, & Communication workshops already occurred
- Storm water, AAA, and Transportation workshops to be scheduled this year

South Florida Resiliency Dialogues (August) – FAU, FIU, UM, Dutch Consulate, British Consulate, AIA, etc.

6th Annual SE Florida Regional Climate Leadership Summit
October 1-2, 2014, Miami Beach Convention Center



Miami-Dade Sea Level Rise Task Force (R 599-13)

July 2013 –July 2014

7 members, 14 meetings

Report & recommendations presented to the Board on July 1st, 2014



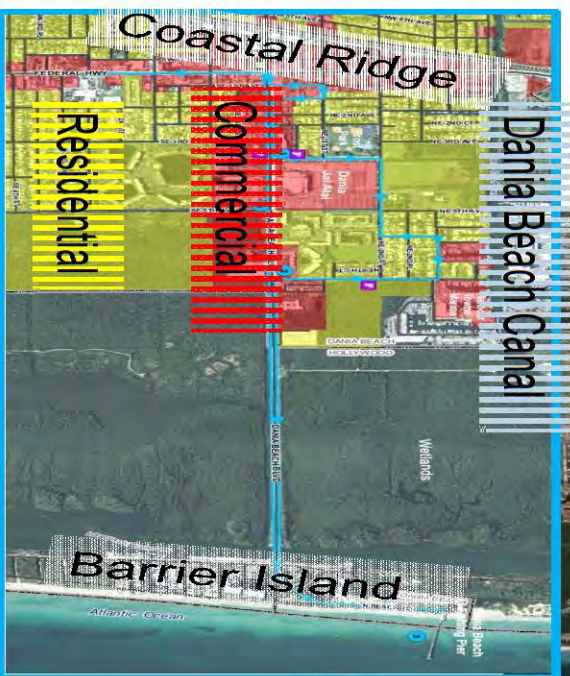
- 1) Develop formal adaptation planning process
- 2) Ensure implementation of CCATF recommendations
- 3) Implement Adaptation Action Areas
- 4) Continue to work with the Compact and S. FL Water Mgmt District to address flood and sea level rise threats
- 5) Continue to support Everglades restoration
- 6) Work with the insurance and reinsurance industry to develop long term risk mgmt. solutions



South Florida Resilient Redesign

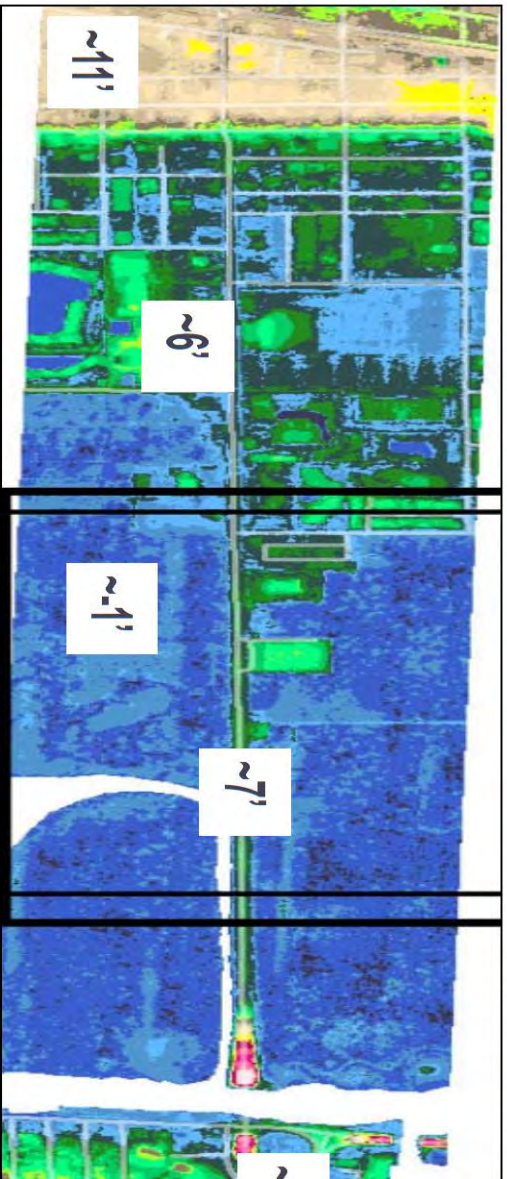
Site Overview

- City of Dania Beach
 - Population ~ 30,000
 - \$44,500 median income
- East Dania Beach Boulevard is main corridor
- Economy depends on
 - Tourism - beach
 - Marine industry
 - Small business

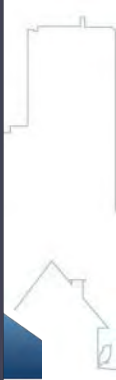


South Florida Resilient Redesign

Site Topography



Storm Surge Limit



Team Focus

- Underutilized assets & economic opportunities
 - ❑ Natural infrastructure (beach and wetlands)
 - ❑ Airport (new runway)
 - ❑ Rail passenger transport
 - ❑ Port expansion
 - ❑ Population growth (40%)
- Flood hazards
 - ❑ SLR, surge, rainfall
- Limited infrastructure resilience

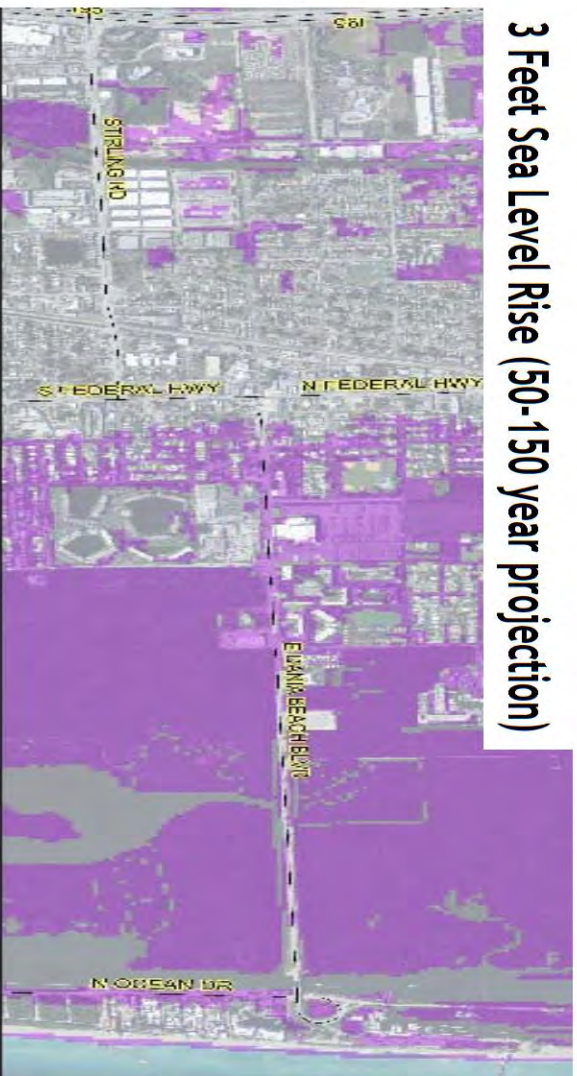


Vulnerability to Climate Change

2 Feet Sea Level Rise (30-70 year projection)

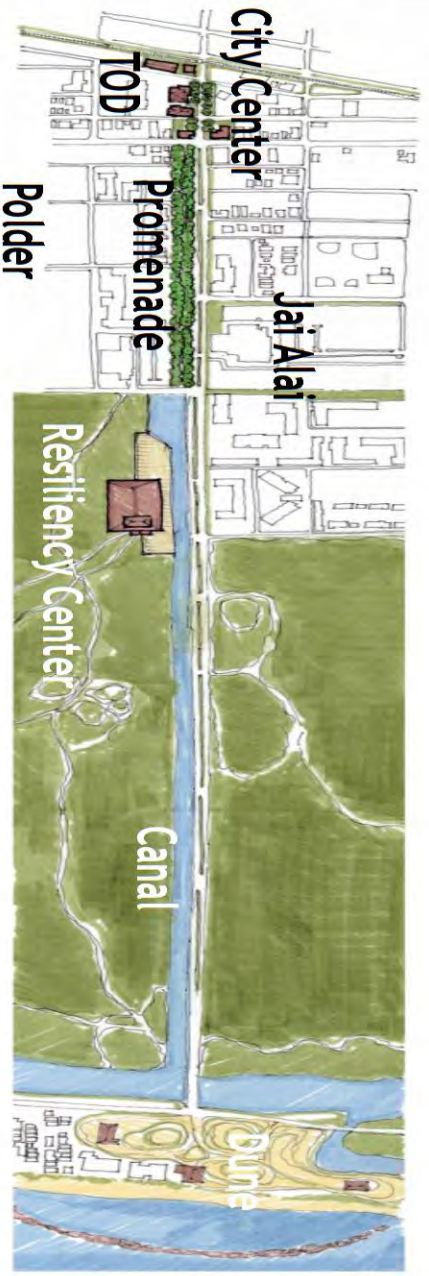


3 Feet Sea Level Rise (50-150 year projection)



Flooding

Interconnectivity



Next steps

- Idea refinement process
 - ☐ Resilient redesign is an evolutionary process
 - ☐ Cultivate agreement upon a shared vision
 - ☐ Seize moments of opportunity
- Follow-up workshop with local officials
 - ☐ Get officials to champion concepts
 - ☐ Local implementation strategies
- Design concept outreach
 - ☐ Booklet/ Brochure
 - ☐ Mini- design workshops for decision-makers
- Identify funding opportunities

Main Compact Documents

Welcome to the Compact Document Library. Feel free to browse, or if you are looking for something specific, please use the drop down menu below to sort documents by category.

SELECT DOCUMENT CATEGORY



RCAP Health Impact Assessment

Category: Supporting Documents
RCAP Health Impact Assessment



Adaptation Action Areas White Paper

Category: Supporting Documents
Adaptation Action Areas White Paper



Regional Greenhouse Gas Emissions Inventory: Baseline Period 2005 -2009

Category: Supporting Documents
The Regional GHG Emissions Inventory documents baseline emissions from the Transport and Built Environment Sectors from 2005—2009.

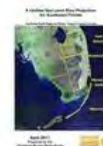
Adaptation Action Area Pilot Project Report

Category: Supporting Documents
The Southeast Florida Regional Council partnered with the City of Ft. Lauderdale on an Adaptation Action Area Pilot Project through the Department of Economic Development, funded by a grant from NOAA.



Analysis of the Vulnerability of Southeast Florida to Sea Level Rise

Category: Supporting Documents
Analysis of the Vulnerability of Southeast Florida to Sea Level Rise



A Unified Sea Level Rise Projection for Southeast Florida

Category: Supporting Documents
The white paper on sea level rise projections for use in Compact planning as developed by the SLR Technical Ad Hoc Working Group.



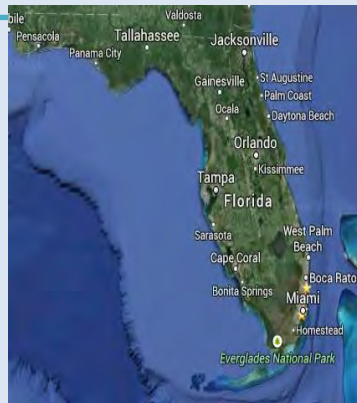
**flash
floods**



**high-tide
events**



surge



Adaptation Action Areas



**stormwater
runoff**



**related
impacts of
sea-level
rise**

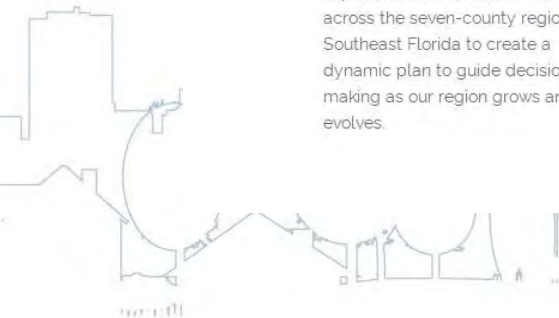


SE Florida Prosperity Plan: Better Region. Better Life.



BETTER REGION. BETTER LIFE.

Seven50 engaged a host of leading experts and thousands of citizens across the seven-county region of Southeast Florida to create a dynamic plan to guide decision-making as our region grows and evolves.



PLAN SUMMARY

THE SEVEN50 REPORT

Seven50 engaged a host of leading experts and thousands of citizens across the seven-county region of Southeast Florida to create a dynamic plan to guide decision-making as our region grows and evolves.

Click [here](#) to review & download the full Seven50 Report.
Click [here](#) to review & download the Vision & Executive Summary.
Click [here](#) to purchase the printed edition of the full Seven50 Report.

REACHING
78,732+
with
498+ FACEBOOK LIKES

A PROCESS
THAT REACHED
MORE THAN

1 MILLION

REACHING
3,336+
with
634+ TWITTER FOLLOWERS

Source: ROAR Media

2,245+

SURVEY PARTICIPANTS

1,367,131+

WEBSITE VIEWS

1,874+

PUBLIC EVENT PARTICIPANTS

Share

Print

PLAN SECTIONS

- › Summary of the Plan
- › Public Engagement
- › The Region Today
- › Growing the Economy
- › The Livable Region
- › Celebrating Arts & Culture
- › Valuing the Environment
- › Climate & Energy Resilience
- › Inclusive Regional Leadership
- › Implementation
- › Guest Essays

RECENT GUEST ESSAYS



Community Partners Building Resilience

HUD programs for homeless persons:

- **Continuum of Care (CoC) Program** – \$2 billion annual grant competition; local social service providers develop and deliver strategic solutions for homeless individuals and families.
- **Emergency Solutions Grant (ESG) Program** – \$250 million formula; states, local governments, and territories deliver emergency shelter, street outreach, rapid re-housing, and homelessness prevention assistance to individuals and families.
- **HOPWA Program** – \$330 million formula & competitive; provides housing assistance and related supportive services for low-income persons living with HIV/AIDS and their families.



Lifting up what works

25 Tools, and More on the Way [Link to PolicyLink.org](https://www.policylink.org)

Land Use and Environment

- Community Mapping
- Inclusionary Zoning
- Infill Incentives
- Brownfields
- Commercial Stabilization
- Commercial Linkage Strategies

Health and Place

- Healthy Food Retailing
- Asthma and the Environment
- Code Enforcement

Coming Soon:

- Urban Parks and Greening
- Climate Change Advocacy
- Foreclosed Properties

Affordable Housing

- Just Cause Eviction Controls
- Rent Controls
- Expiring Use: Retention of Subsidized Housing
- Employer-Assisted Housing
- Housing Trust Funds

Economic Opportunity

- Minority Contracting
- Local Hiring Strategies
- Living Wage Provisions
- CDC's with Resident Shareholders
- Cooperative Ownership Models
- Community Development Financial Institutions



Commercial...

PolicyLink

Lifting Up What Works®



Equity 2015: The National Summit

October 27-29, 2015

Los Angeles, California

Save the date!

Sarita Turner, Senior Associate

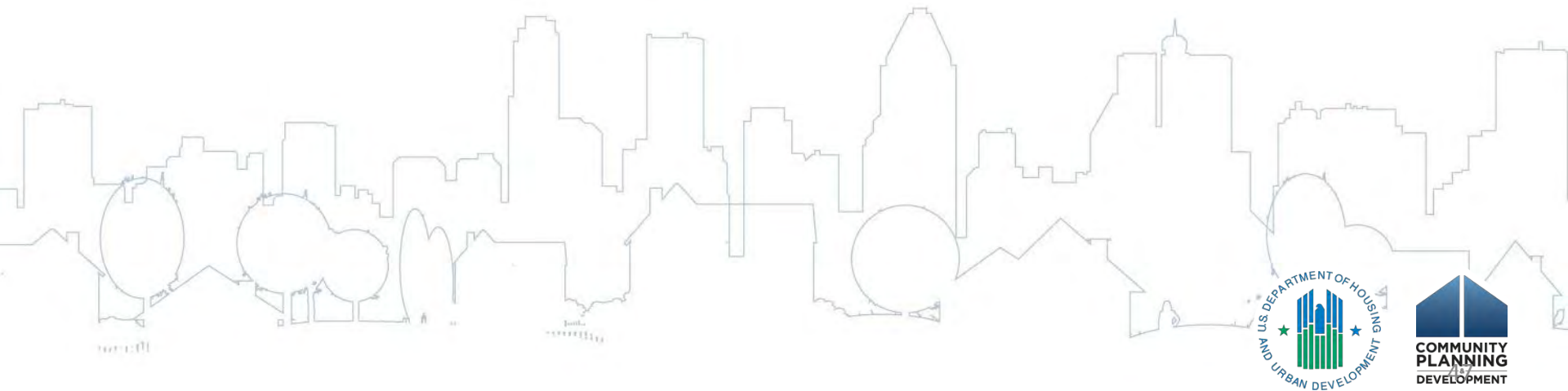
510-663-4387

sarita@policylink.org

James F. Murley, Executive Director

jmurley@sfrpc.com

Questions?



Reminder

- No NOFA NDRC questions will be answered during this presentation.
- All NOFA NDRC questions should be sent to:
resilientrecovery@hud.gov

