

New Jersey Strategies Aligning Housing & Health Care

Presented by: Lynn Kovich, Senior Consultant
Technical Assistance Collaborative, Inc.

November 10, 2015



Technical Assistance Collaborative

TAC is a national nonprofit organization that advances proven solutions to the housing and community support services needs of low-income people with disabilities and people who are experiencing homelessness.

Services include:

- Policy Development
- Program Design and Implementation
- Financing
- Outcomes and Performance Evaluation
- Workforce Training

State Strategies

New Jersey Division of Mental Health and Addiction Services (DMHAS)

- **Supportive Housing**
 - Lease Based
 - Permanent
 - Flexible Services
 - Services not contingent upon housing
 - Scattered site or clustered in a large development
 - Different models for people with medical, forensic, intense behavioral needs
 - Began in mid 2000's

State Partners to DMHAS

- New Jersey Housing & Mortgage Finance Agency
 - State Housing Trust Fund
 - Low Income Housing Tax Credits
 - HUD Section 811 PBRA Program
 - Housing Clearinghouse
- New Jersey Department of Community Affairs
 - State Rental Assistance Program
 - Housing Choice Vouchers
 - Non-Elderly Disabled Vouchers
- New Jersey Division of Medical Assistance
 - State Plan Amendments
 - Service Funding for People in Supportive Housing
 - Managed Care

Housing Resources

- Division Operated Subsidy Program
 - Appropriated State Funds
 - Mirrored a Section 8 Program
 - Income requirements
 - 30% of income towards rent
 - Providers paid landlords
 - Individual held leases or master leasing programs
 - Apartment checklist mirrored a HUD Section 8 checklist
 - Intended to be a bridge program to a permanent subsidy

Services

- Providers responded to RFP's
- RFP included service funding and subsidy funding
- Appropriated state resources
- Medicaid agency submitted a state plan amendment via the rehab option
- Rehab option provided Medicaid funding for services for people in supportive housing
- Currently being implemented

Housing Clearinghouse

- Partnered with NJ Housing Mortgage Finance Agency
 - Housing agency should administer state housing subsidies
 - Centralize housing resources vs clustered in provider contracts
 - More efficient use of state resources
 - Ability to track available housing units
 - Central to HUD 811 PBRA Program
 - Lease up including income certifications and re-certifications
 - Apartment inspections
 - Tenant/Landlord/Provider Liaison
 - Maintain state's waiting list
 - Referral Process

Positive Outcomes

- Reduced State Hospital Census
- Moved people right into PSH from state hospitals
- Hospital Census = 1,640 PSH Census = 5,080
- Aligned Olmstead and Homelessness
- PSH expanded through Olmstead
- Olmstead target population included those who are at risk of or are homeless



NEW JERSEY'S 3 MEDICAID ACO DEMONSTRATION PROJECTS

Launched: July 2015

Elements of a Community-Based Medicaid Accountable Care Organization (ACO)

- Based on a geographic region
- Includes **all hospitals** in region
- Includes **75% of primary care providers** in region
- Includes behavioral health & social service partners
- Sets goals around quality metrics & cost savings
- Community participation in governance & gainsharing
- Shared savings to being reinvested in health resources for the community



Overview of Camden Coalition

- 79 full-time-equivalent staff; \$9 million annual budget
- Mix of foundation & federal grants, technical-assistance & care-coordination contracts, and hospital support
- Membership organization with 20-member board; incorporated non-profit



MISSION

To improve the quality, capacity, coordinated and accessibility of the healthcare system for all residents of Camden.



VISION

Camden will be the first city in the country to bend the cost curve while improving quality.

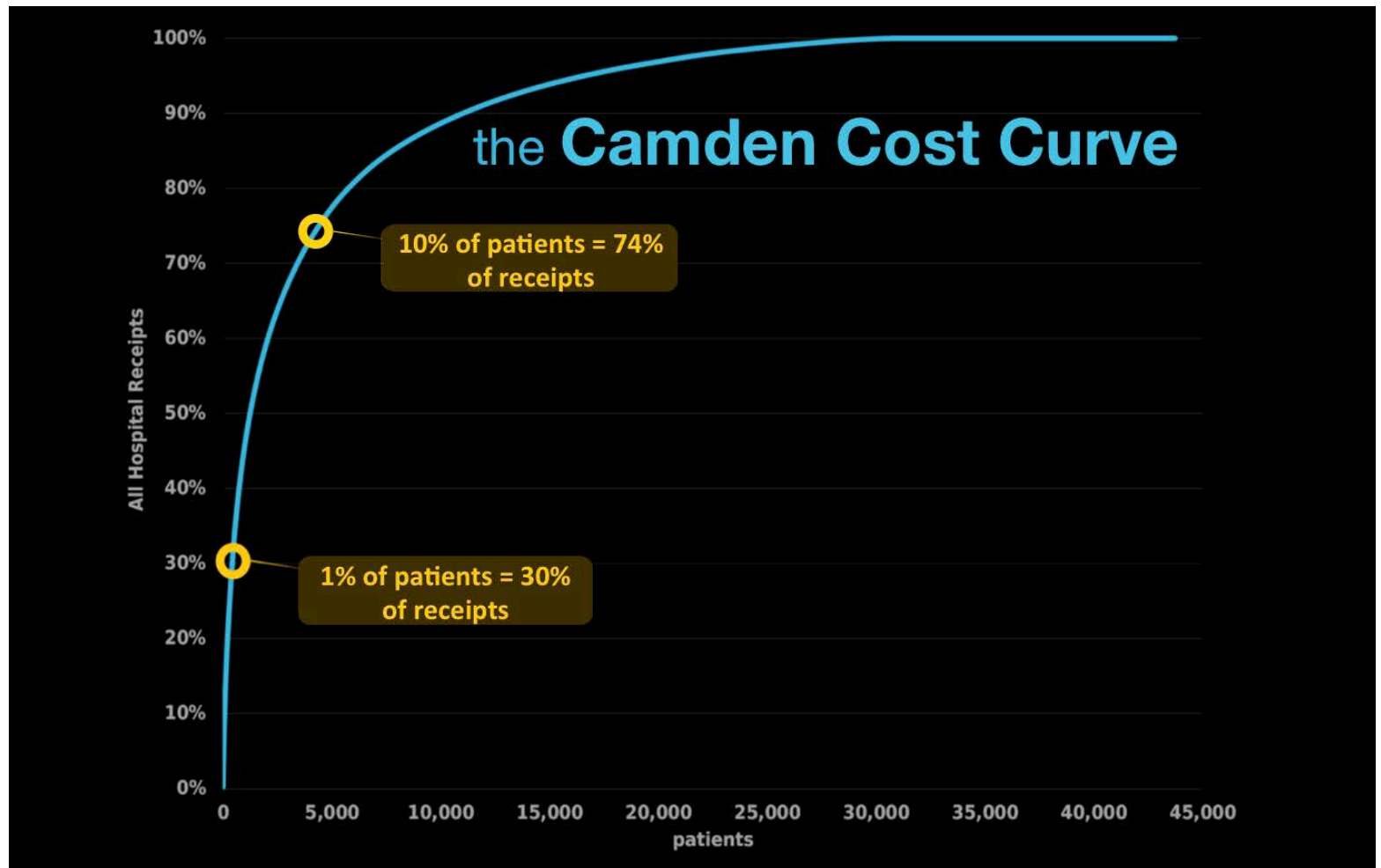


CAMDEN

CCHP Structure

- Operations
 - Care Management Initiatives
 - Camden Health Information Exchange
 - Clinical Redesign & ACO Administration
 - Planning & Performance Improvement
 - Service Learning & Staff Development
- Data, Research & Evaluation
- Legal & External Affairs (including policy and advocacy)
- Cross-site Learning & Communications
- Finance & Administration

Camden Hospital Cost Curve



Why launch a Housing First project?

1. Health care interventions don't work when individuals aren't housed
2. Identified the need in our patient population
3. Experienced barriers in current system
4. Aligns with our mission and vision



CHHP's Housing First Model

- 50 units – scattered-site housing
- Eligibility criteria:
 - Chronic homelessness – streets, shelter, instability
 - Hospital high user – 2+ hospital admissions in 6 mos.
- Targeting the most vulnerable
 - Readmission rates
 - Duration of homelessness
 - Criminal background
 - Poverty
 - Substance use
- Separate housing and services

Building the Coalition

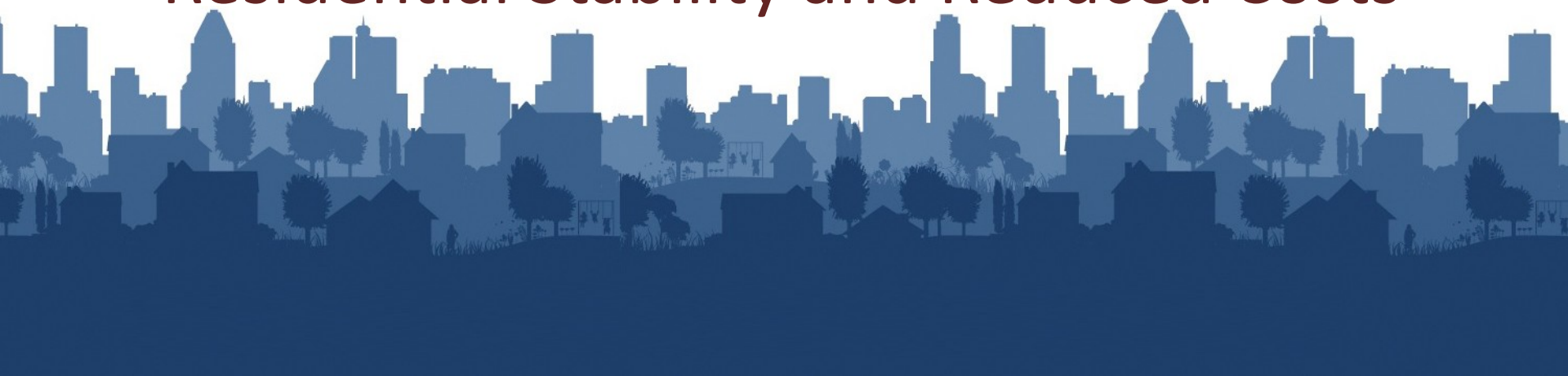
A Camden Partnership

- **Corporation for Supportive Housing:** Technical assistance and support
- **South Jersey Behavioral Health Resources, Inc.:** Wraparound support services
- **Volunteers of America—Delaware Valley:** Housing identification, housing management
- **St. Joseph's Carpenter Society:** Housing identification, housing management
- **The Camden Coalition:** Patient selection; program management and evaluation





A Hear from Your Peers Webinar -
Effective Coordination between
Hospitals and CoC Homeless Assistance
Providers Results in Improved
Residential Stability and Reduced Costs



Speaker Contact Information

Roula K. Sweis:

Roula.K.Sweis@hud.gov

Lisa Bahadosingh:

lisa@supportivehousingworks.org

Joyce Platz:

jplatz@stvincents.org

Corrin Buchanan:

cbuchanan@dhs.lacounty.gov

Lynn Kovich:

LKovich@tacinc.org



Resources

- HUD ACA Website:
<https://www.hudexchange.info/aca/>
- HUD ACA Webinar Series and Materials:
<https://www.hudexchange.info/news/aca-webinar-series/>
- Join the HUD ACA Mailing List:
<https://www.hudexchange.info/maillinglist/>



For Additional H² Information

Roula K. Sweis, Supervisory Program Advisor,
Office of the Assistant Secretary for CPD

Roula.K.Sweis@hud.gov

