



Office Hours: COVID-19 Planning and Response

September 25, 2020



Housekeeping

- A recording of today's session, along with the slide deck and a copy of the Chat and Q&A content will be posted to the HUD Exchange within 2-3 business days
- Event information for upcoming Office Hours, along with copies of all materials can be found here:

<https://www.hudexchange.info/homelessness-assistance/diseases/#covid-19-webinars-and-office-hours>

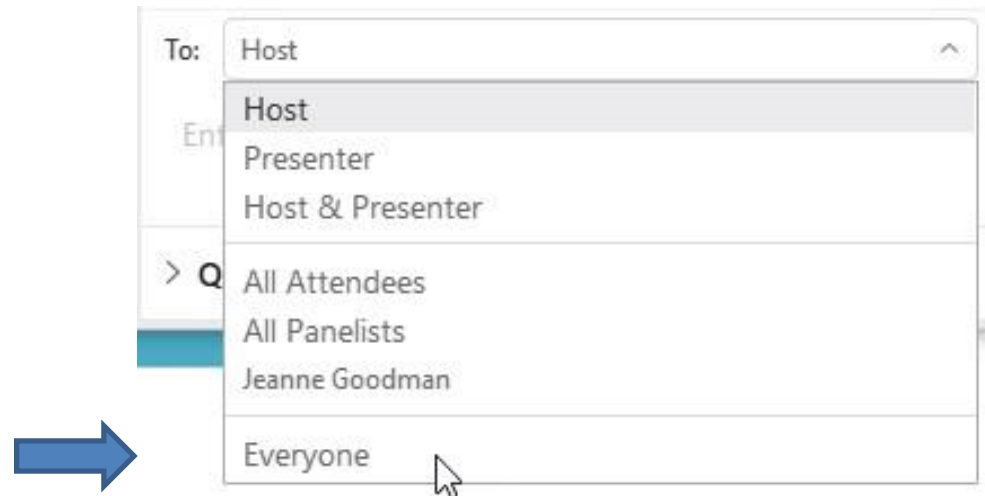
- To join the webinar via the phone, please call in using:
1-855-797-9485 Access code: 610 976 677

Chat Feature



Select the Chat icon to make a comment or ask a question.

Be certain the To field is set to **Everyone**



Speakers & Resource Advisors

Department of Housing and Urban Development

- Office of Special Needs Assistance Programs
 - Norm Suchar
 - Karen DeBlasio
 - Brett Esders
 - Marlisa Grogan
 - Abby Miller
 - William Snow

Centers for Disease Control and Prevention

- Emily Mosites, PhD MPH- COVID-19 At-Risk Population Task Force, Senior Advisor on Health and Homelessness

Speakers & Resource Advisors

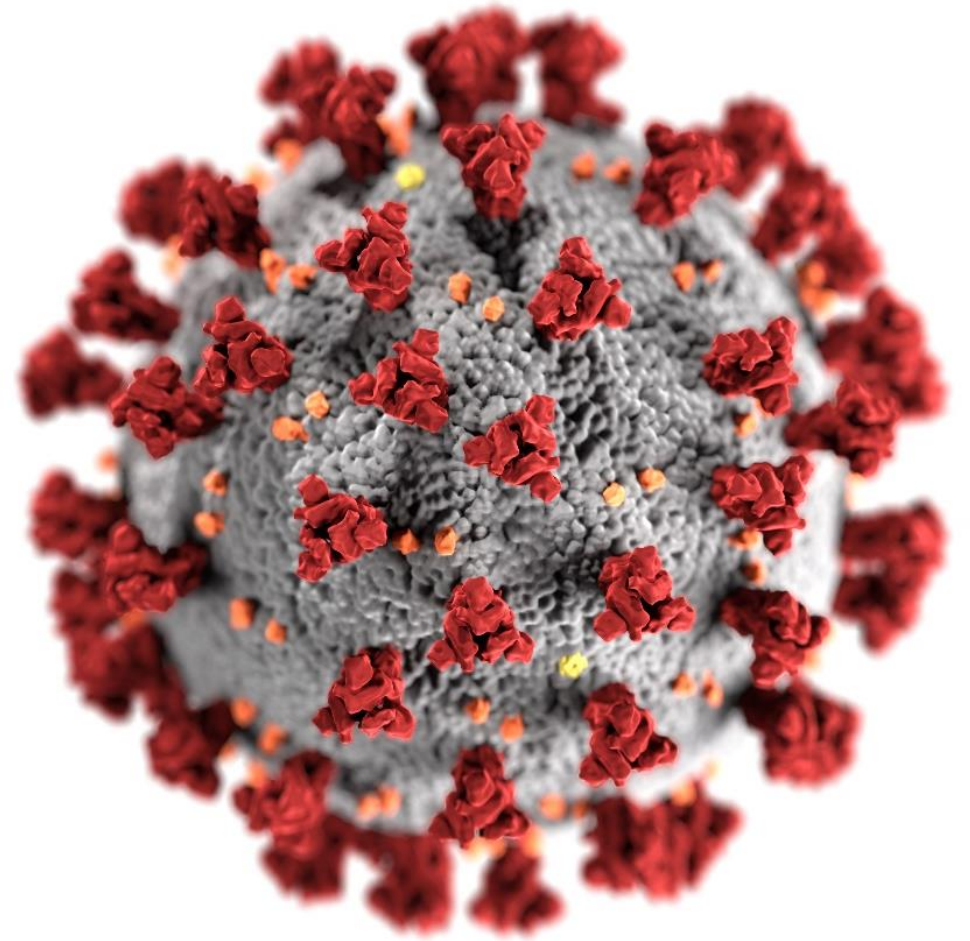
Montgomery County, MD

- Amanda Harris, MSW, MPP Chief of Services to End and Prevent Homelessness, Montgomery County Department of Health and Human Services
- Tamar Epner, Program Manager, Planning, Analytics, and Customer Service

COVID-19 and Homelessness

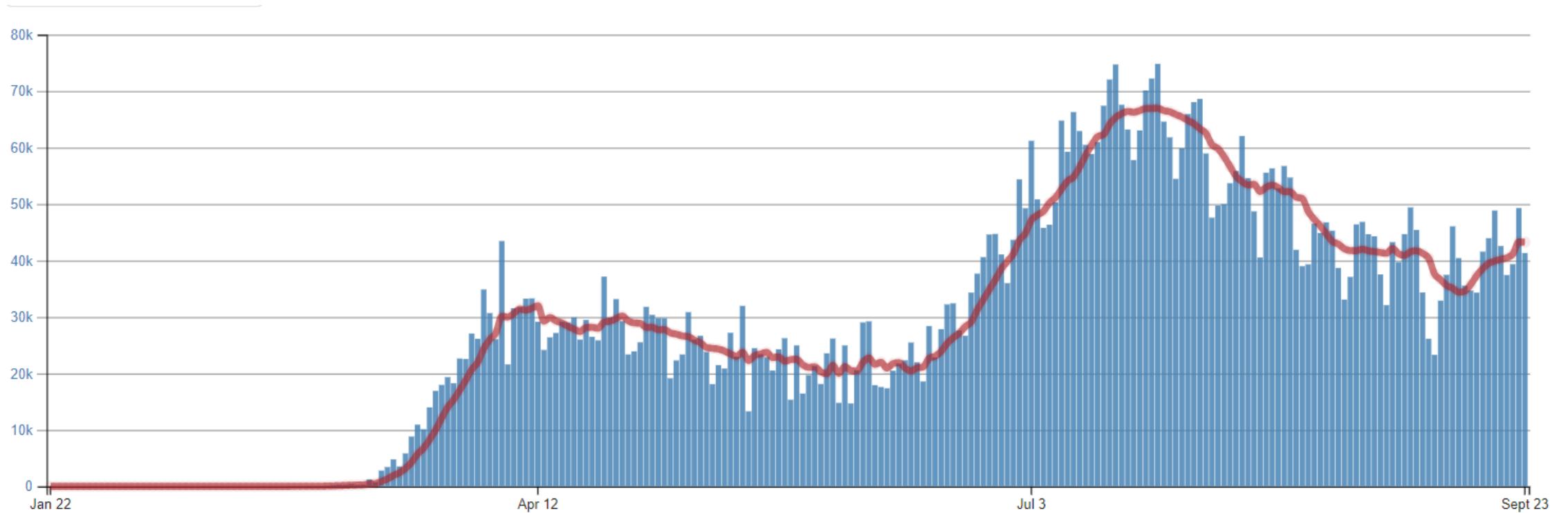
Updates

Homelessness Unit
Disproportionately Affected Populations Team
COVID-19 Response



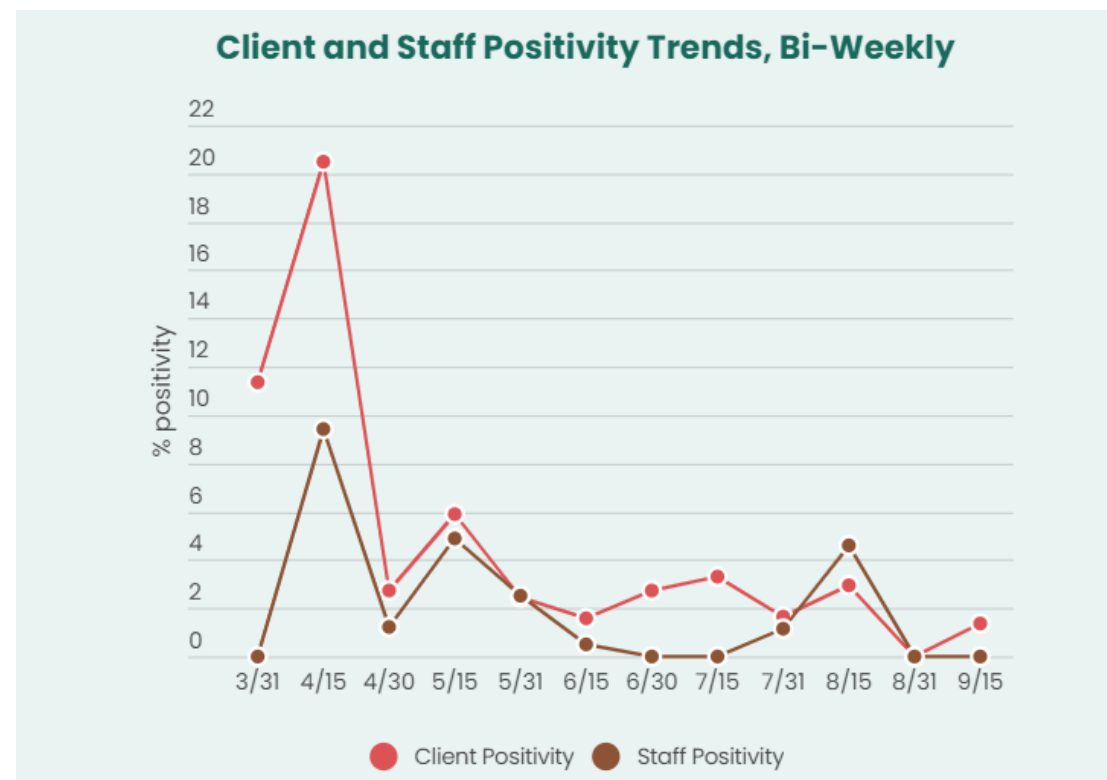
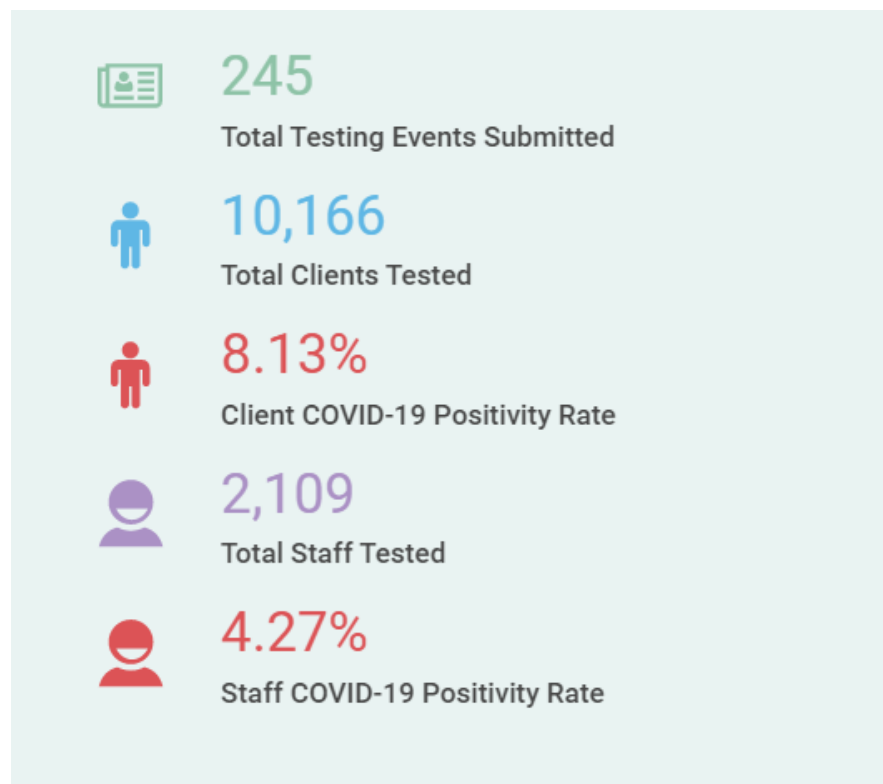
cdc.gov/coronavirus

6.9 million cases reported in the United States*



*as of 9/24/20

COVID-19 testing at homeless shelters, as of 9/24/20



Visit the NHCHC [Universal COVID-19 Testing at Homeless Service Sites](#) dashboard online for more information.



CDC guidance related to homelessness and COVID-19

Ongoing Mitigation Guidance

Guidance to plan, prepare, and respond to COVID-19

People experiencing unsheltered homelessness


Homeless service providers

Checklist for Homeless Service Providers During Community Re-opening

Testing in homeless shelters and encampments

Considerations for state and local health departments

Youth Experiencing Homelessness

COVID-19 Infection Control Inventory and Planning (ICIP) Tool for Homeless Service Providers 
[PDF – 426 KB]

Prevention and Support

CDC/EPA cleaning and disinfection guidance

Screening for symptoms

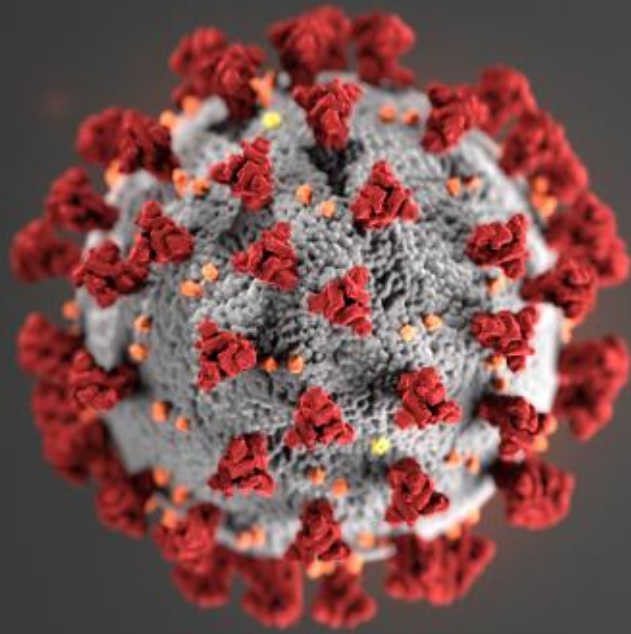
FAQs for homeless shelters

Extra precautions for people experiencing homelessness

Homeless Shelter Worker Training  [PDF – 1 MB]

Dashboard on Universal COVID-19 Testing at Homeless Service Sites 





For more information, contact CDC
1-800-CDC-INFO (232-4636)
TTY: 1-888-232-6348 www.cdc.gov

The findings and conclusions in this report are those of the authors and do not necessarily represent the official position of the Centers for Disease Control and Prevention.





COVID-19 HOMELESS PREVENTION INDEX

PROMOTING EQUITY AND NEED-BASED PRIORITIZATION FOR RENTAL ASSISTANCE

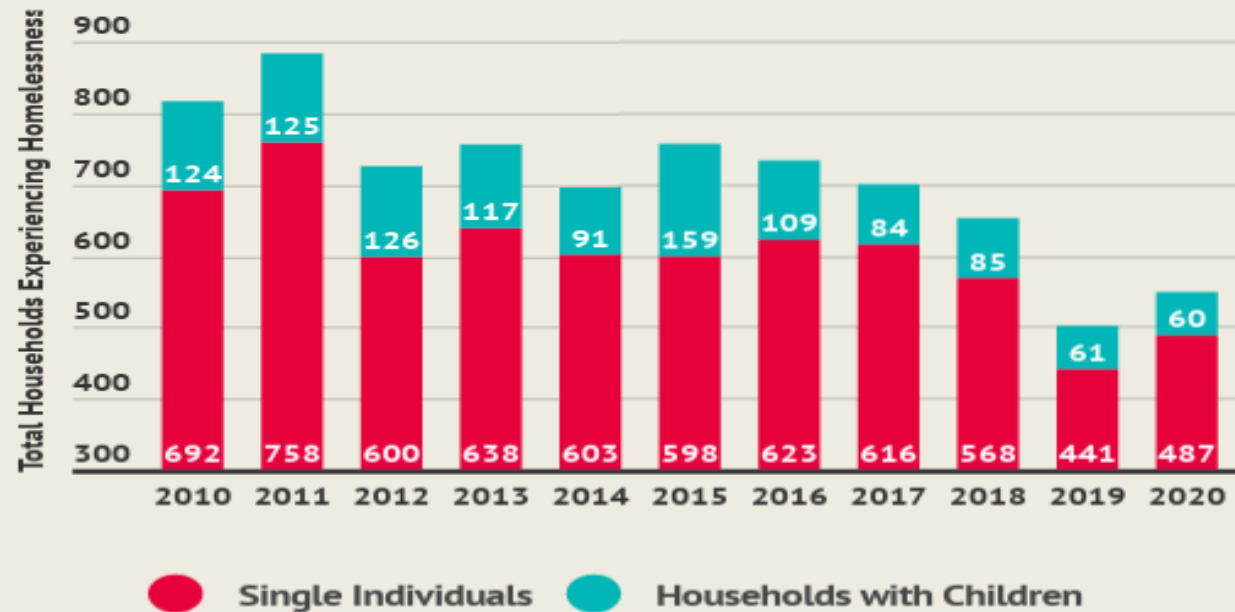


Services to End and Prevent Homelessness

- Acts as the Collaborative Applicant and HMIS Lead
- Oversees homeless crisis response system, permanent housing programs, and prevention
- Core Values
 - *Housing First and Person-Centered*
 - *Diversity, Equity, and Inclusion*
 - *Collaboration across the Continuum*
 - *Data and Results Based Decisions*
 - *Continuous Change and Improvement*

Homelessness in Montgomery County

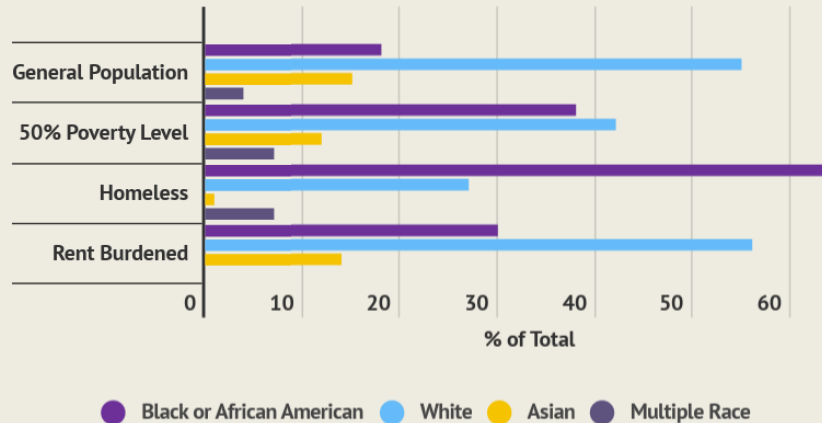
Annual Point-in-Time Count



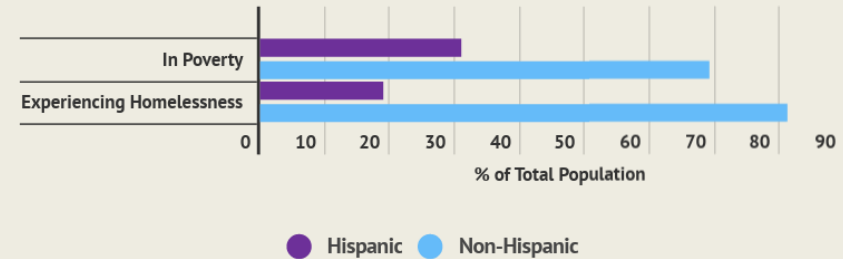
- Achieved functional zero for Veterans in 2015
- Reduced chronic homelessness by more than 90%
- Reduced overall homelessness by 33% over the last ten years

Racial Disparities in the Homeless Continuum

Distribution of Race



Distribution of Ethnicity



COC RESPONSE TO COVID-19

Use of CARES Act Funding

Effective Use of Resources

FEMA	Coronavirus Relief Funds	ESG	CDBG	Local
Non-congregate Shelter	\$20M for Eviction/ Homeless Prevention	\$6.2 M primarily used for Rapid Rehousing	\$2M for rental assistance	\$3.5 M for diversion, rapid exit, and eviction prevention

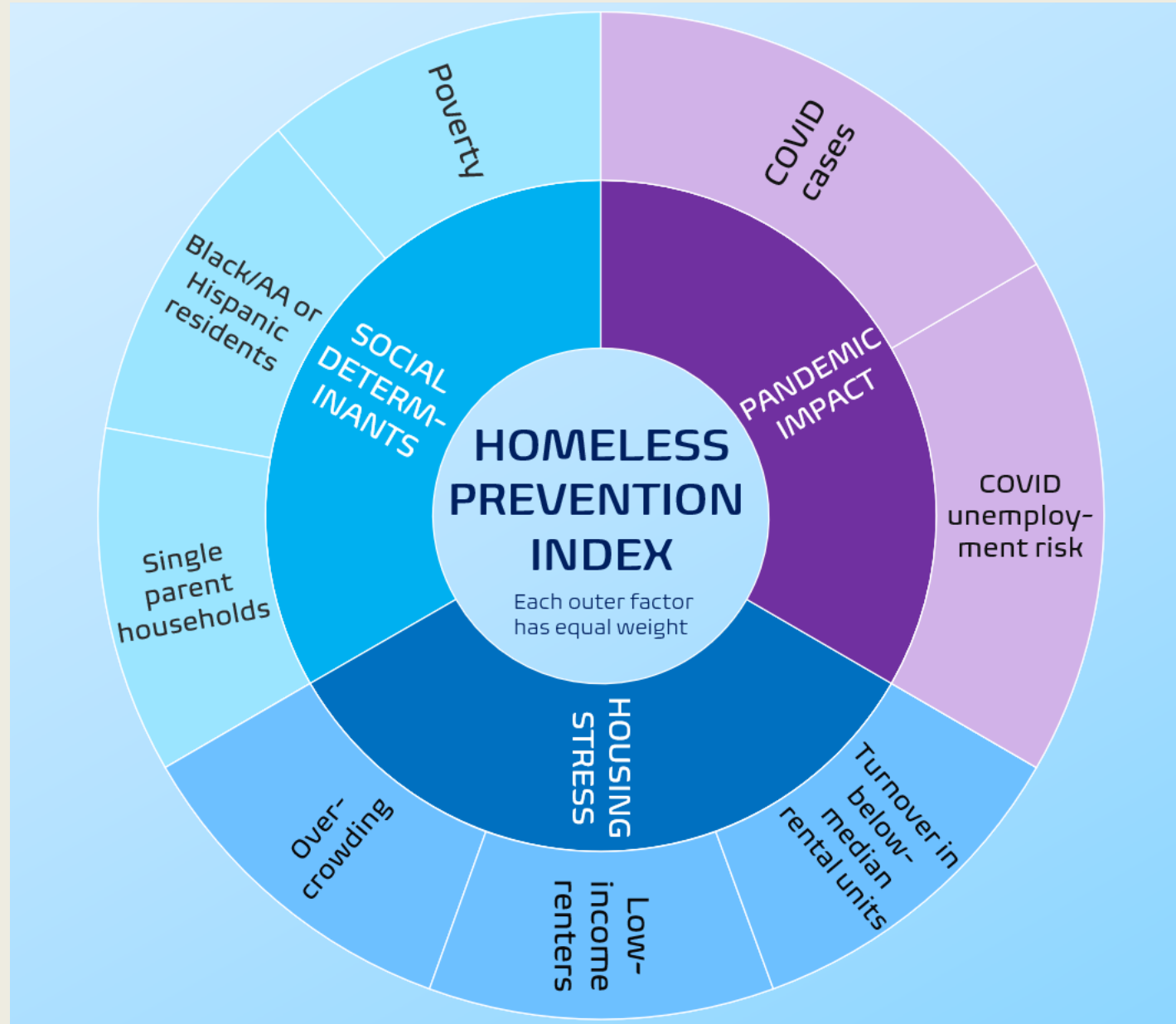
Eviction Prevention Phase One: Lessons Learned

- CDBG Challenges
 - *Overly complicated application*
 - *Low number of applicants*
- Covid Rent Relief Program: Phase One (local funding)
 - *Disparities in applicants – more than 70% Latinx*
 - *Overly complicated benefit calculations*
 - *Time intensive*

EVICTIION/ HOMELESS PREVENTION PHASE TWO

Using data to target those most likely to experience homelessness

HOMELESS PREVENTION INDEX



INTERACTIVE DECISION-MAKING TOOL

HOMELESS PREVENTION INDEX: PRIORITY NEIGHBORHOODS MAP (BETA)

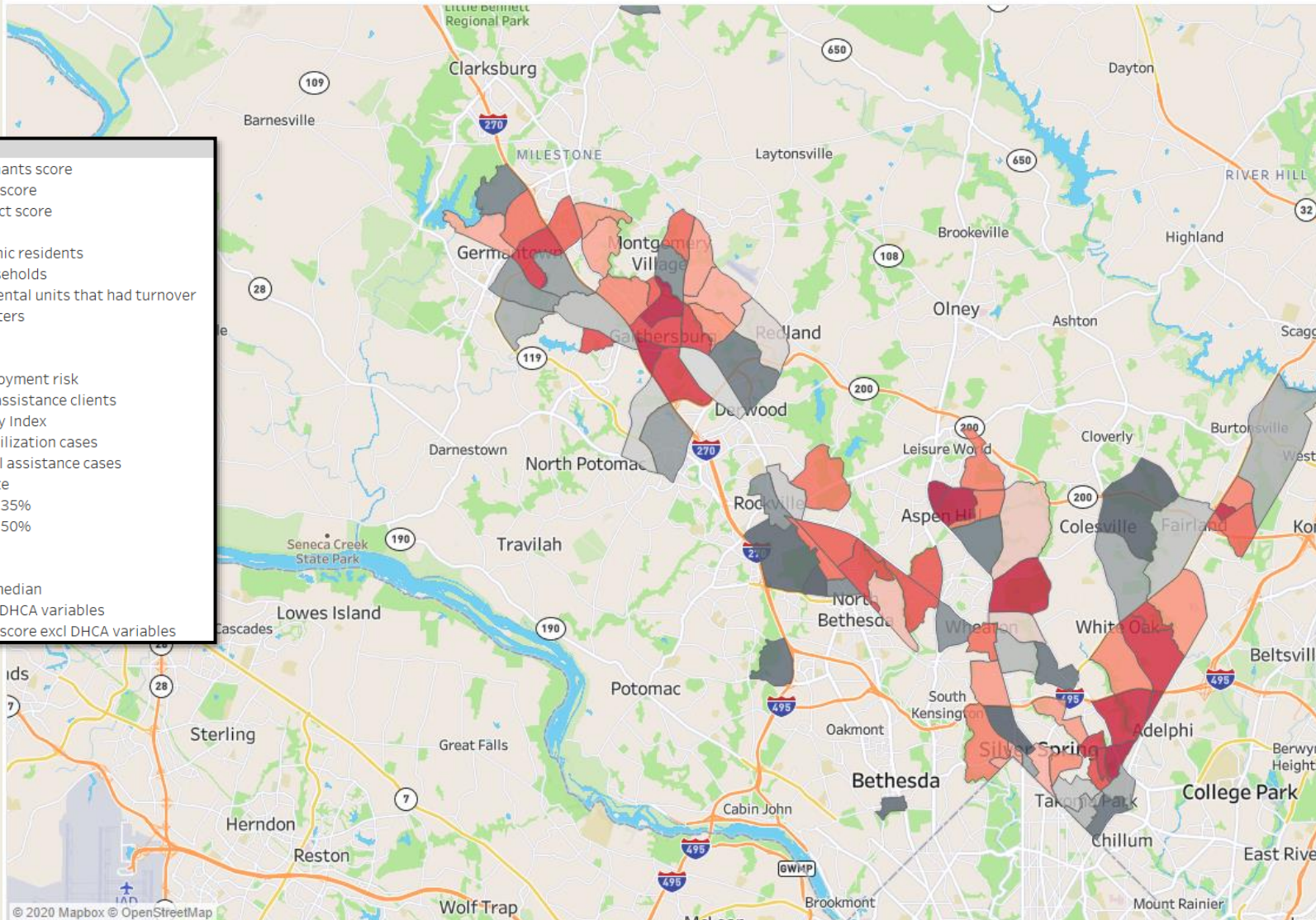
bit.ly/mc-hpi-explorer

Factor

Neighborhood Ranking: Top Percentile Cutoff

INDEX: Overall score

40.00%



Low Income Renter Households (<\$50k)

35,766

Race Ethnicity



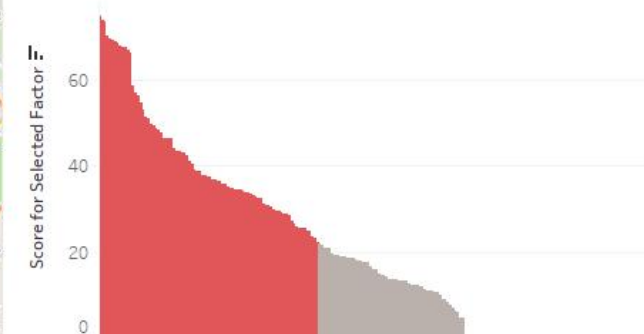
Facilities Profile

Community Name	Turnover Rate	Unit Count
Cider Mill	33%	861
Northwest Park	30%	747
Londonberry	40%	529
Rock Creek Terrace	1%	526
The Parc at Woodlake	37%	534
Flower Branch Apartments	26%	362
Foxhall Apartments	5%	263

Units in Bottom 25% Rent

Rating: Null at-risk compliant TBD

Distribution: Selected Neighborhoods in Red



INDEX: Overall score
THEME 1: Social determinants score
THEME 2: Housing stress score
THEME 3: Pandemic Impact score
Social: Poverty
Social: Black/AA or Hispanic residents
Social: Single parent households
Housing: Below-median rental units that had turnover
Housing: Low-income renters
Housing: Overcrowding
Pandemic: COVID cases
Pandemic: COVID unemployment risk
Other: DHHS emergency assistance clients
Other: Social Vulnerability Index
Other: FY19 Housing stabilization cases
Other: FY19 County rental assistance cases
Other: Unemployment rate
Other: Housing burdened 35%
Other: Housing burdened 50%
Other: Limited English
Other: DHHS FY19 clients
Other: Rent units below median
INDEX: Overall score excl DHCA variables
THEME 2: Housing stress score excl DHCA variables

INDICATOR SELECTION

- **TECHNICAL OBJECTIVES:**

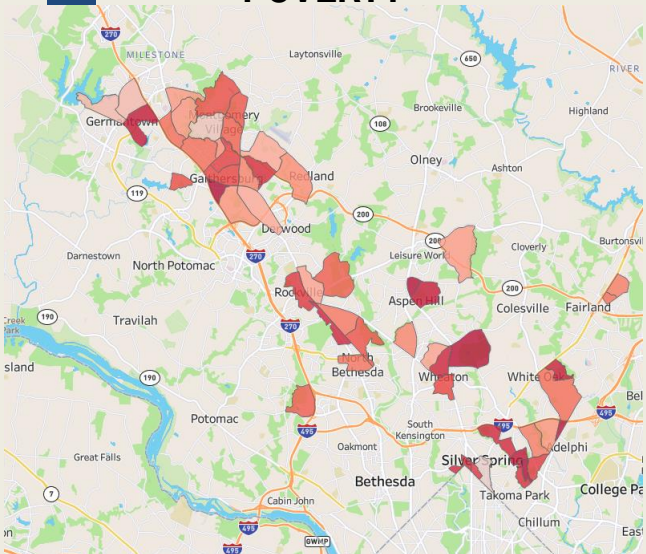
- ▶ Informed by national research
- ▶ Localized to county characteristics
- ▶ Simple to communicate, avoiding redundant factors
- ▶ Statistically sound

- **INDICATORS CONSIDERED BUT NOT INCLUDED:**

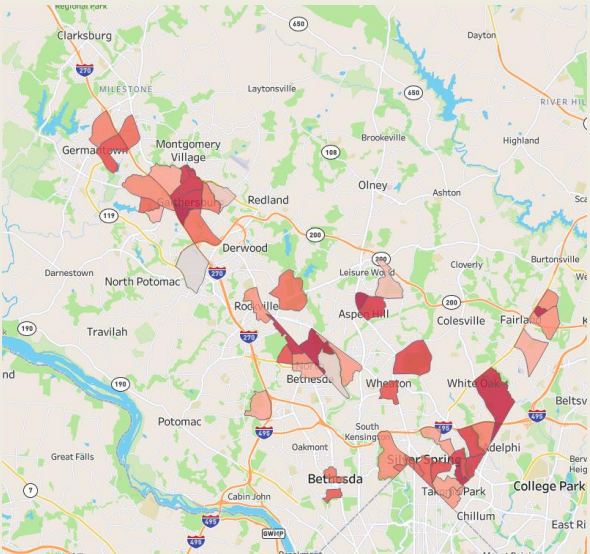
- Percent of persons who speak English less than well
- Unemployment rate across all occupations
- Eviction rates
- Percent of renters across all incomes
- Percent of renter-occupied households whose gross rent is 30-50% of household income
- Percent Hispanic/% Black/AA residents as separate measures
- DHHS administrative data

HIGH CORRELATION AMONG THE INDIVIDUAL INDICATORS

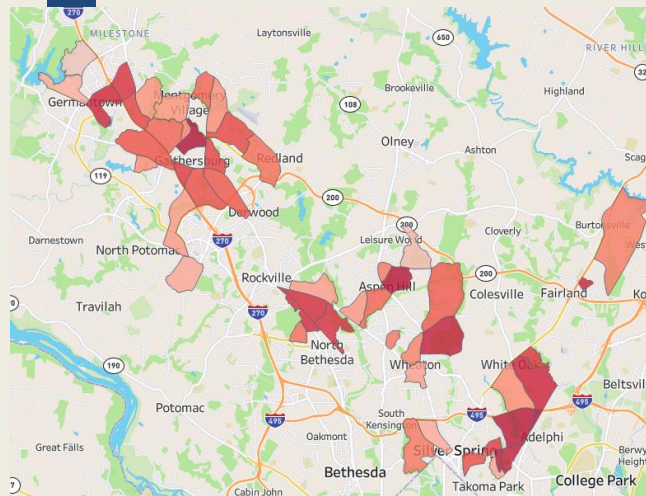
POVERTY



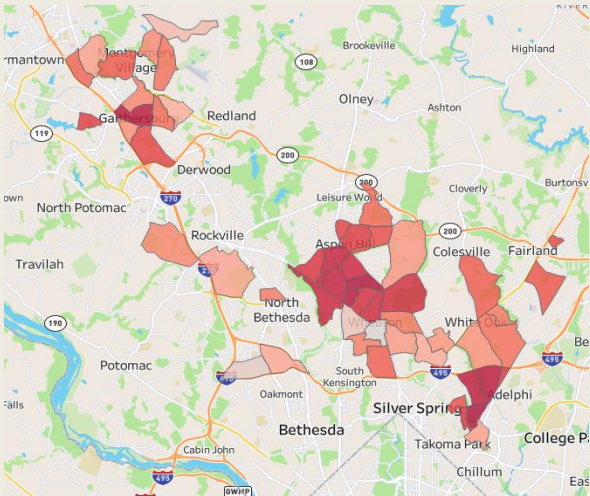
LOW INCOME RENTERS



OVERCROWDING



COVID CASES PER CAPITA



HIGH CORRELATION AMONG THE INDICATORS

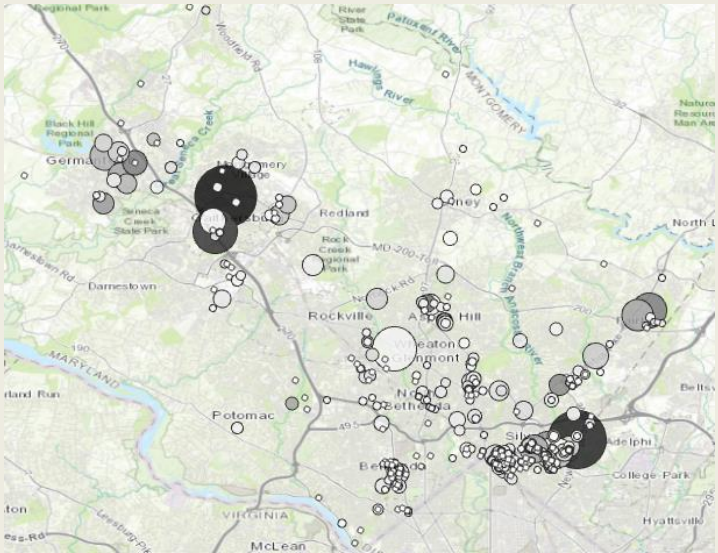
	POVERTY	SINGLE PARENT HOUSE-HOLDS	BLACK/AA OR HISPANIC RESIDENTS	OVER-CROWDING	LOW-INCOME RENTERS	TURNOVER IN BELOW-MEDIAN RENTAL UNITS	COVID CASES	COVID UNEMPLOY- MENT RISK
POVERTY	1							
SINGLE PARENT HOUSEHOLDS	0.53	1						
BLACK/AA OR HISPANIC RESIDENTS	0.66	0.8	1					
OVERCROWDING	0.7	0.62	0.7	1				
LOW-INCOME RENTERS	0.78	0.55	0.62	0.72	1			
TURNOVER IN BELOW-MEDIAN RENTAL UNITS	0.56	0.55	0.54	0.57	0.67	1		
COVID CASES	0.55	0.57	0.7	0.58	0.49	0.35	1	
COVID UNEMPLOYMENT RISK	0.57	0.6	0.78	0.59	0.45	0.31	0.73	1

VALIDATIONS

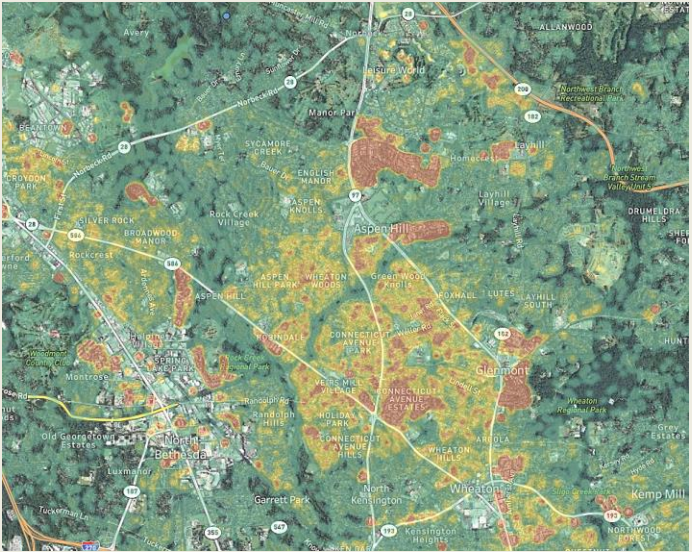
A. REVIEW WITH REGIONAL SERVICE CENTER DIRECTORS AND OTHER STAKEHOLDERS



B. DEP OF HOUSING FACILITIES LEVEL DATA

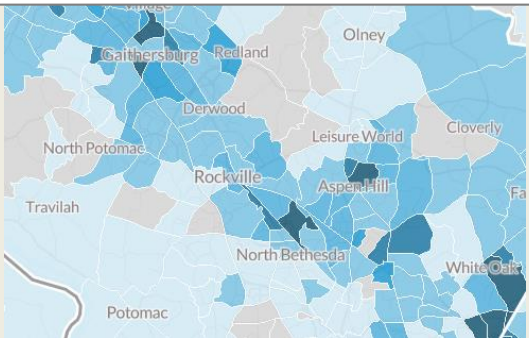


C. CONCENTRATION OF DHHS CLIENTS

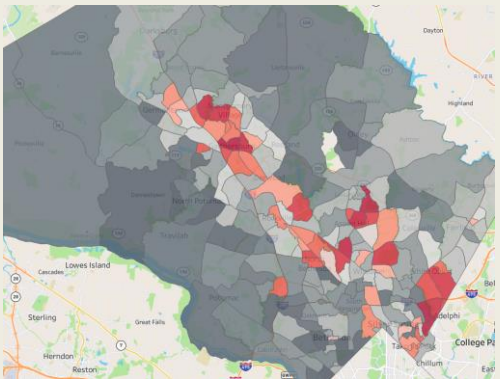


D. URBAN INSTITUTE PRIORITIZATION INDEX (AUG 25)

Where to Prioritize Emergency Rental Assistance to Keep Renters in Their Homes

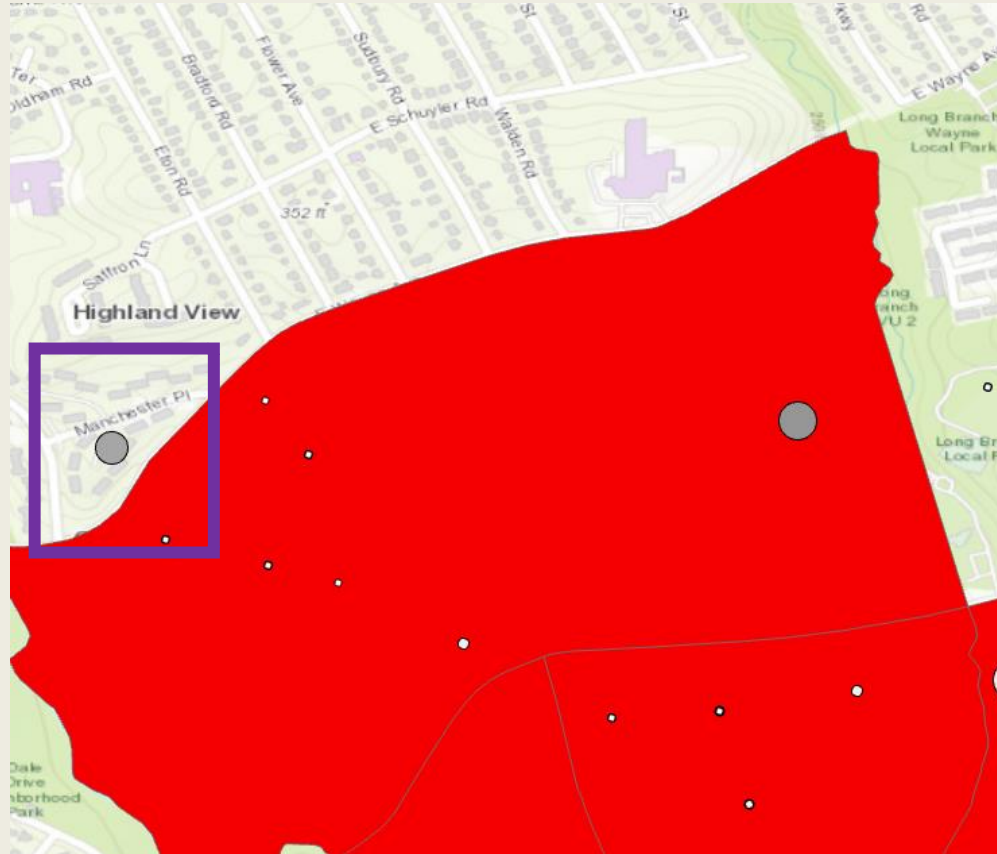


E. CDC SOCIAL VULNERABILITY INDEX



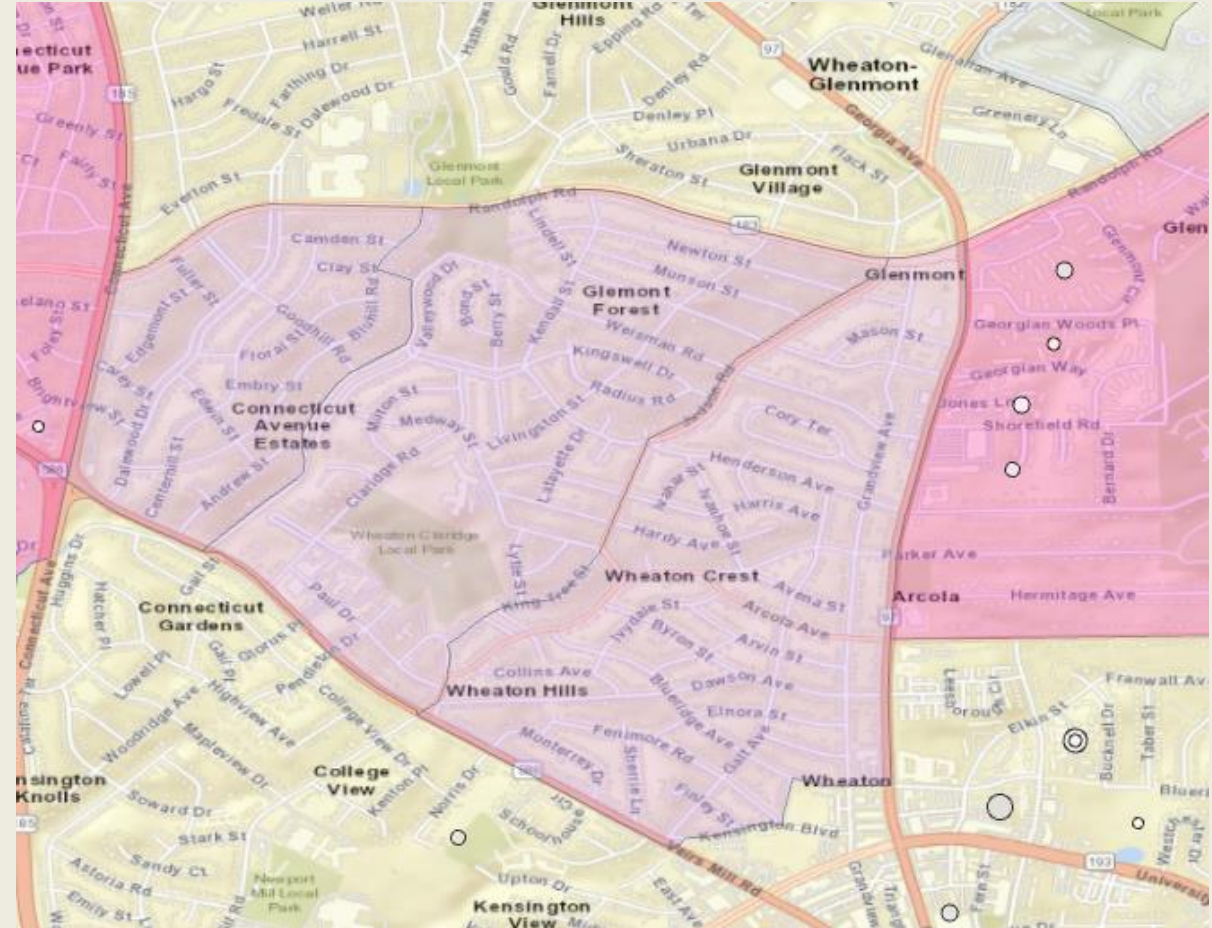
TWO DATA-INFORMED EXPANSIONS

1. EXTEND HIGH-NEED TRACTS TO INCLUDE ADJACENT HIGH NEED PROPERTIES



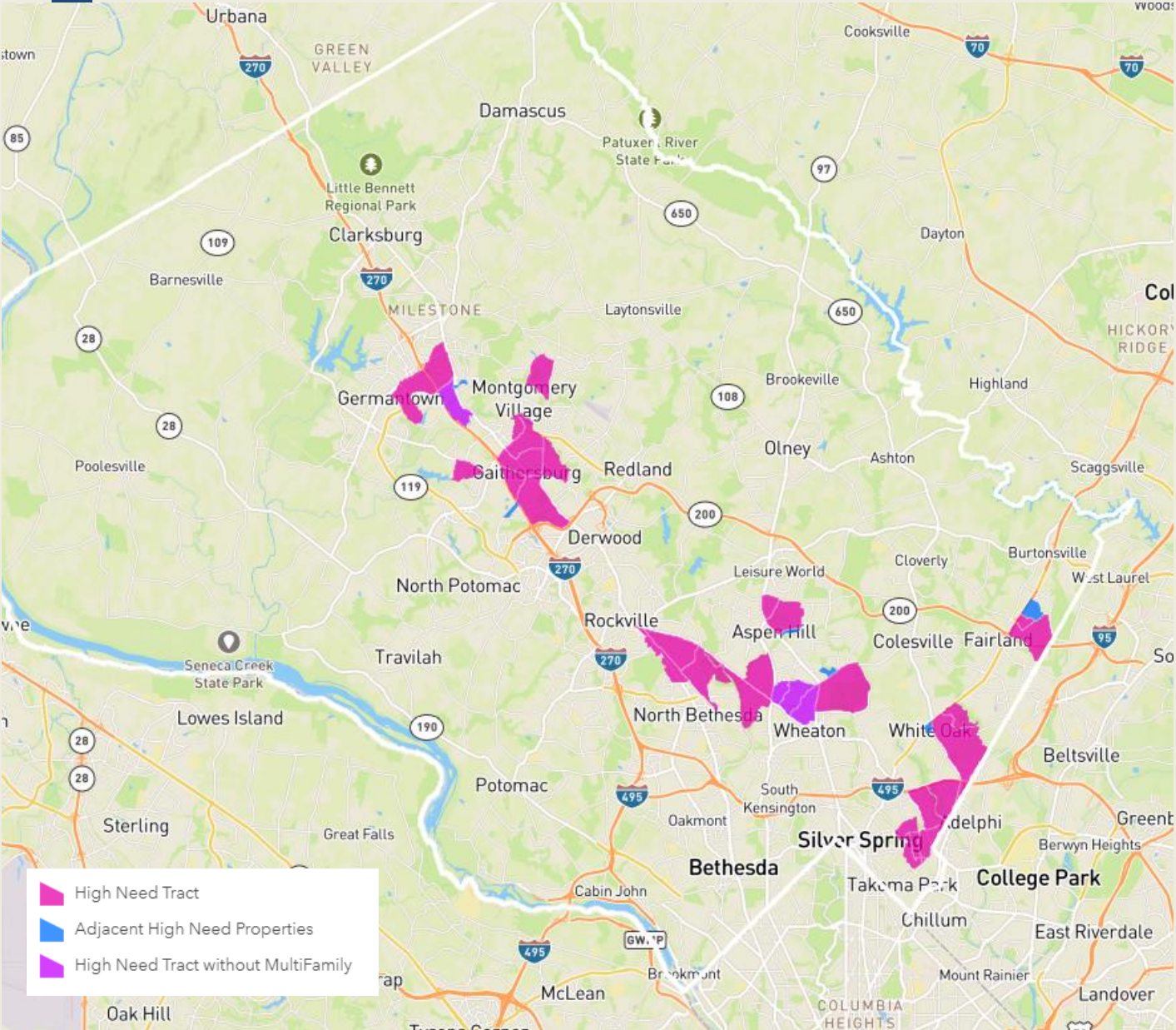
OTHER EXAMPLES INCL MIDDLE BROOK MOBILE HOME PARK

2. INCLUDE TRACTS THAT SCORE HIGH WITHOUT THE INDICATORS RELIANT ON MULTI-FAMILY HOUSING (CT AVE ESTATES + FOX CHAPEL)



HIGH DENSITY OF PRIVATE RENTALS OF SINGLE-FAMILY HOMES, TOWNHOUSES, AND ROOMS

TARGETING EFFICIENCY



FOCUSING ON AREAS ACCOUNTING FOR...

6% of land mass

16% of the population

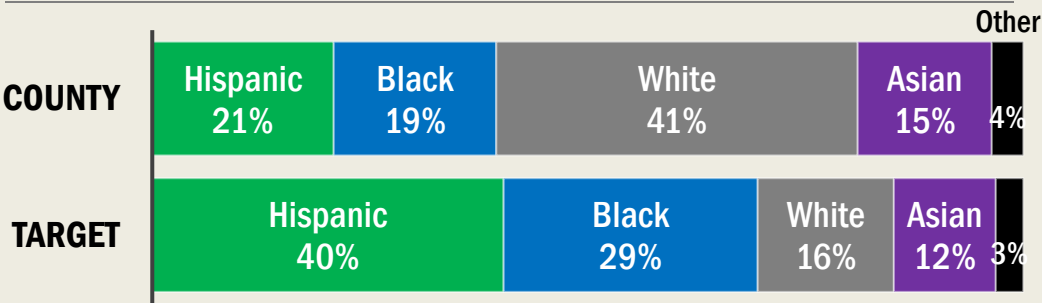
27% of rental units

ENABLES US TO EFFICIENTLY TARGET

Half of low-cost rental units

Half of low-cost rental units with turnover

INDICATOR	COUNTY	TARGET AREAS	DIFFERENCE
Poverty Rate	6% (County average)	12% (tract average)	182% of County avg
Average Income	\$154,200 (County average)	\$83,200 (tract average)	54% of County avg

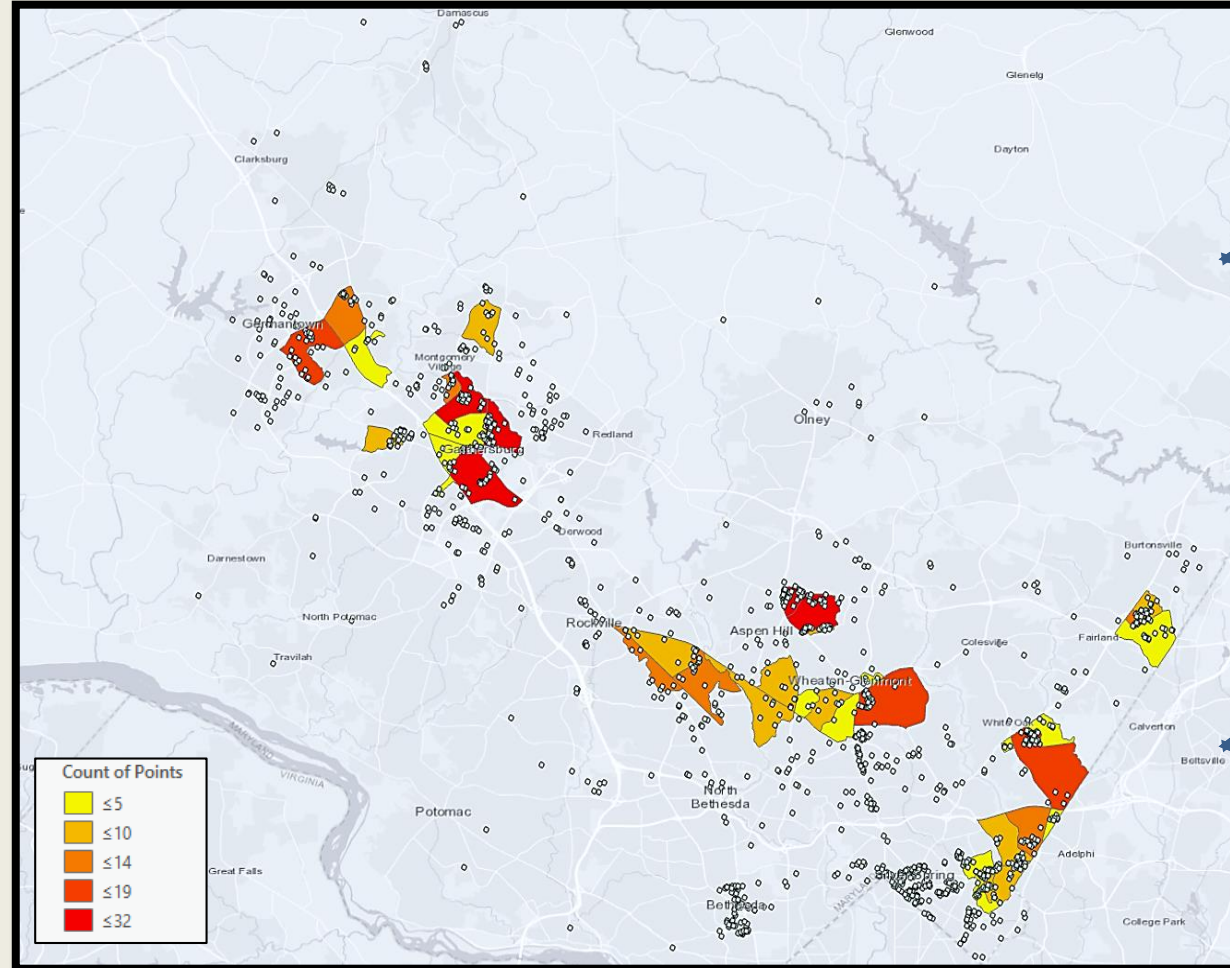


SOURCE: ESRI

IMPLEMENTATION

- Online application available in multiple languages
- Limited documentation required
- Early engagement with organizations with the deepest reach into the community
- Bilingual staff
- Onsite outreach and assistance for properties in the target neighborhoods

REAL-TIME OPERATIONAL USE: FIRST 1,000 APPLICATIONS



**APPLICATIONS FROM
HIGH NEED AREAS ARE
PRIORITIZED**

**HIGH NEED AREAS WITH
LOW NUMBER OF
APPLICATIONS PROVIDE
FOCUS FOR OUTREACH**

HUD TECHNICAL ASSISTANCE SPOTLIGHT

- *IRS ECONOMIC IMPACT PAYMENT (EIP)
TOOLKIT*



EIP Toolkit

- IRS developed materials in English and Spanish urging people who don't normally file a tax return to sign up for an Economic Impact Payment by October 15th.
- Also encourage federal benefit recipients to register for an additional \$500 per qualifying child payment by September 30th.
- See [HUD Exchange Resource Digest](#) for a link to all materials:

[**Internal Revenue Service \(IRS\): Coronavirus Tax Relief and Economic Impact Payments**](#)

EIP Toolkit Content

- A step-by-step guide to using the IRS Non-Filers Tool to get an Economic Impact Payment
- A flowchart walking people through how to get an Economic Impact Payment when they don't normally file taxes
- An if/then chart showing an overview of how to get an Economic Impact Payment from the IRS
- E-posters alerting targeted populations (e.g., Social Security recipients with children; veterans benefit recipients with children) that they need to act by Sept. 30 to get their additional \$500 EIP
- An updated partner toolkit with information on reaching people who still need to register for an EIP

EIP Toolkit Content



www.irs.gov

How Do I Get An Economic Impact Payment When I Don't Normally

1 Are You Eligible for an Economic Impact Payment?

Eligible individuals may include those with no income or low income who are below \$12,200 for single filers, \$18,350 for head of household filers and \$24,400 for joint filers. This includes people experiencing homelessness, low-income workers, independent contractors, and others.

- are a U.S. citizen, permanent resident or qualifying resident alien,
- cannot be claimed as a dependent on someone else's tax return and
- have a Social Security number that's valid for employment.

For people who don't normally have to file a return because their income is below the filing requirement, the IRS has created an Assistant tool - [Do I Need to File a Tax Return?](#) - and answer basic questions.

To determine if you are required to file a 2019 tax return or if you should file, use the [Assistant tool - Do I Need to File a Tax Return?](#)

2 Do you receive any of these benefits?

- Social Security retirement benefits
- Social Security survivor benefits
- Social Security Disability Insurance (SSDI), or Supplemental Security Income (SSI), Railroad Retirement benefits or Veterans Affairs benefits, use the [Non-Filers: Enter Payment Info Here](#) tool by Sept. 30 if you have not already given us this information.
- Supplemental Security Income

YES

NO

Sign on for a non-filer to use the Non-Filers: Enter Payment Info Here tool.



www.irs.gov

Get an Economic Impact Payment from the IRS

Most Americans have already received an Economic Impact Payment. Some may have to provide additional information for the IRS to determine their eligibility for a payment.

Sept. 30 deadline for some federal benefit recipients who haven't received \$500 payments for qualifying children

Register using the IRS Non-Filers: Enter Payment Info Here online tool by Oct. 15 if you:

- Had income below \$12,200 (\$24,400 if married) in 2019; AND
- Are not required to file a tax return for 2019 or 2018; AND
- Don't plan on filing a tax return to claim tax credits like the Earned Income Tax Credit.

Have an Social Security number

Cannot be claimed as a dependent



www.irs.gov

Algunos beneficiarios de beneficios sociales con niños necesitan actuar para recibir el pago de impacto económico.

El IRS reabrió el período de registro para individuos que:

- reciben beneficios de Seguro Social, Seguro Suplementario de Seguro Ferroviario, pero no recibieron \$500 por niño en el pago de impacto económico.


Some veterans benefits recipients with children need to act by September 30 to get \$500 Economic Impact Payment

The IRS reopened the registration period for individuals who:

- receive benefits from the Department of Veteran Affairs, but
- didn't receive \$500 per child earlier this year when they received their own Economic Impact Payment.

Who should use the Non-Filers tool

Federal benefit recipients can use the IRS's [Non-Filers: Enter Payment Info Here](#) tool



Families that don't typically file taxes may still qualify to claim a \$1,200 Economic Impact Payment, plus \$500 per child.

www.irs.gov/eipnonfiler

Combustible para volver a la escuela:

Padres que no requieren declarar impuestos aún puede ser elegibles para \$1,200 de Pago de impacto Económico más \$500 por niño.



www.irs.gov/nonfilereip

New Resources Posted

- [COVID-19 Homeless System Response: Creating a Cultural Equity Plan: Organizational Policies and Procedures](#)
- [Maximizing Income for Rapid Rehousing Participants During COVID-19](#)
- [Staff Orientation to Racial Equity](#)
- [Strategies for Renter Protection](#)
- [Federal Rehousing Resources](#)
- [Rehousing and Coordinated Investment Planning Tool - Version 1.3](#)
- [CoC Program Project Rating and Ranking Tool](#)
- [COVID-19 Frauds and Scams: Guide for Housing Counselors](#)

Key Websites

HUD: <https://www.hudexchange.info/homelessness-assistance/diseases/infectious-disease-prevention-response/>

CDC: <https://www.cdc.gov/coronavirus/2019-ncov/community/homeless-shelters/index.html>

NHCHC: <https://nhchc.org/clinical-practice/diseases-and-conditions/influenza/>

USICH: <https://www.usich.gov/tools-for-action/coronavirus-covid-19-resources/>

VA: <https://www.publichealth.va.gov/n-coronavirus/index.asp>

HRSA: <https://bphc.hrsa.gov/emergency-response/coronavirus-frequently-asked-questions.html>

Federal Partner Contacts

For additional information or assistance, contact:

- Centers for Disease Control and Prevention:
www.cdc.gov/COVID19; 1-800-CDC-INFO (232-4636); TTY: 1-888-232-6348
- Department of Housing and Urban Development:
[HUD Exchange Ask-A-Question \(AAQ\) Portal](#)

Q & A

