



# Office Hours: COVID-19 Planning and Response

August 28, 2020



# Housekeeping

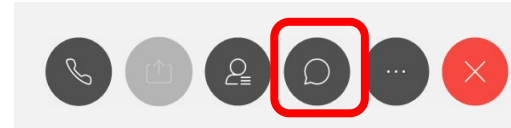
- A recording of today's session, along with the slide deck and a copy of the Chat and Q&A content will be posted to the HUD Exchange within 2-3 business days
- Event information for upcoming Office Hours, along with copies of all materials can be found here:

<https://www.hudexchange.info/homelessness-assistance/diseases/#covid-19-webinars-and-office-hours>

- To join the webinar via the phone, please call in using:  
1-855-797-9485      Access code: 610 976 677

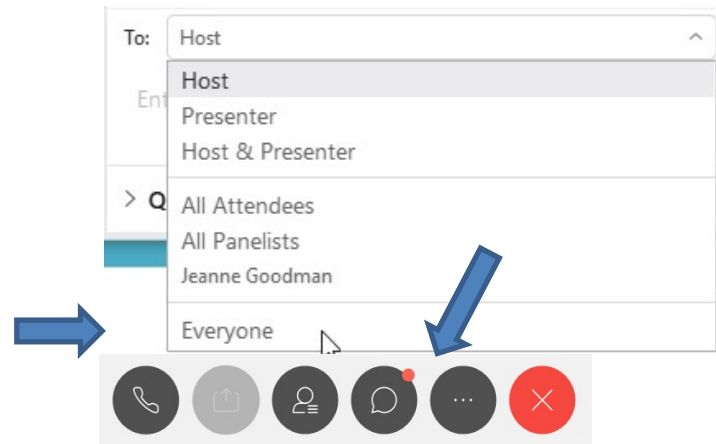
# Chat Feature

Select the Chat icon to make a comment or ask a question.



Be certain the To field is set to **Everyone**

An orange dot on the Chat icon indicates that you have unread messages.



# Speakers & Resource Advisors

## Department of Housing and Urban Development

- Office of Special Needs Assistance Programs
  - Norm Suchar
  - Lisa Coffman
  - Karen DeBlasio
  - Brett Esders
  - Marlisa Grogan
  - Abby Miller
  - Ebony Rankin
  - William Snow
- Jessie Handforth Kome, Director, Office of Block Grant Assistance (OBGA)
- James Höemann, Director, Entitlements Division, OBGA
- Aaron Weaver, Senior CPD Representative, Chicago Field Office
- Alicia Lehmer, HUD TA, HomeBase
- David Canavan, HUD TA, Canavan Associates



# Speakers & Resource Advisors

## Centers for Disease Control and Prevention

- Emily Mosites, PhD MPH- COVID-19 At-Risk Population Task Force, Senior Advisor on Health and Homelessness

## National Healthcare for the Homeless Council

- Barbara DiPietro, PhD, Senior Director of Policy

## Department of Veterans Affairs

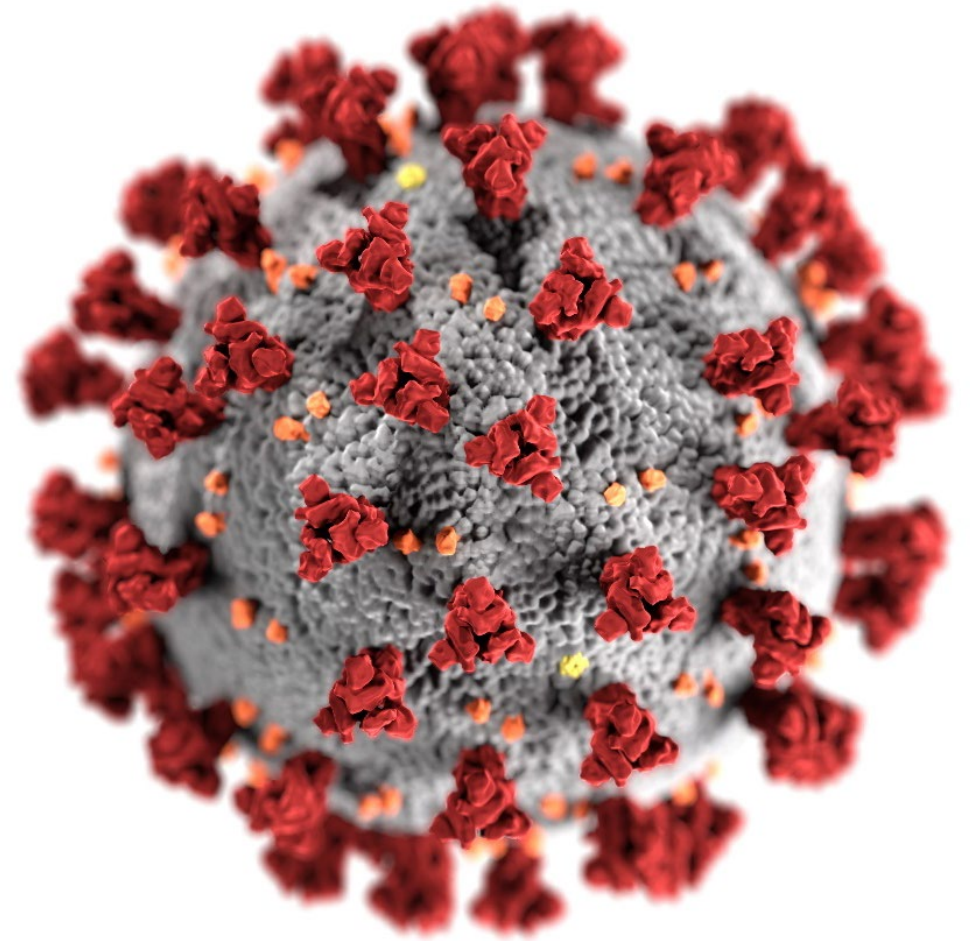
- Dina Hooshyar, MD, MPH, Director, National Center on Homelessness Among Veterans (the Center), VHA Homeless Program Office
- Jillian Weber, PhD, RN, CNL, Homeless-PACT National Program Manager, VHA Homeless Program Office



# COVID-19 and Homelessness

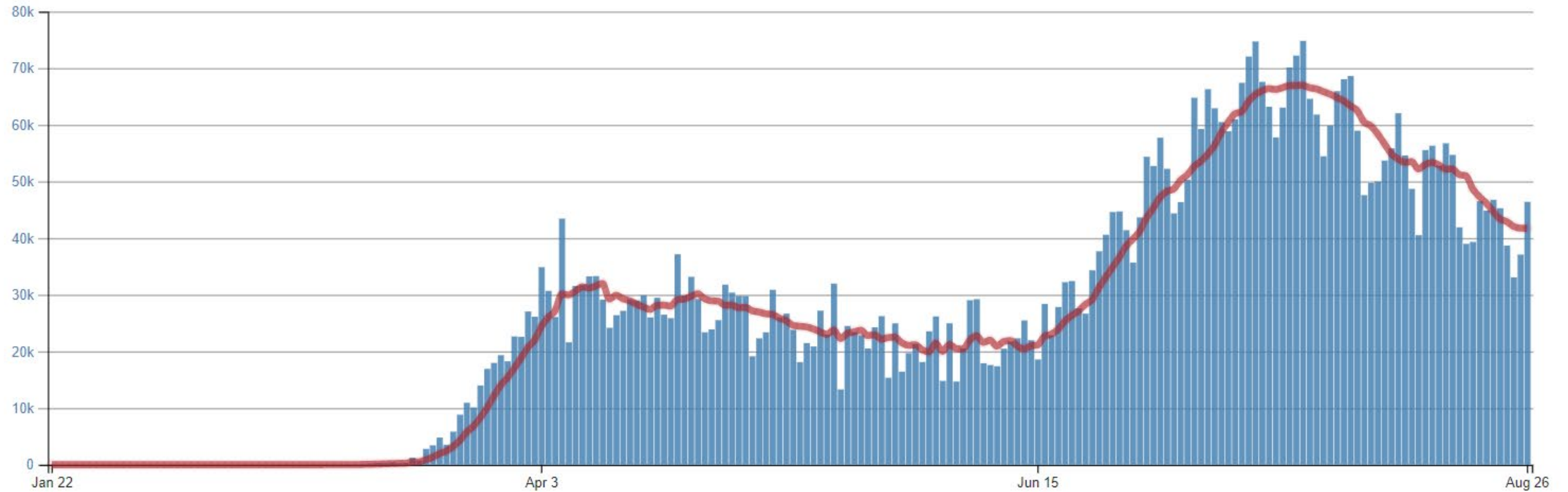
Updates

Homelessness Unit  
Disproportionately Affected Populations Team  
COVID-19 Response



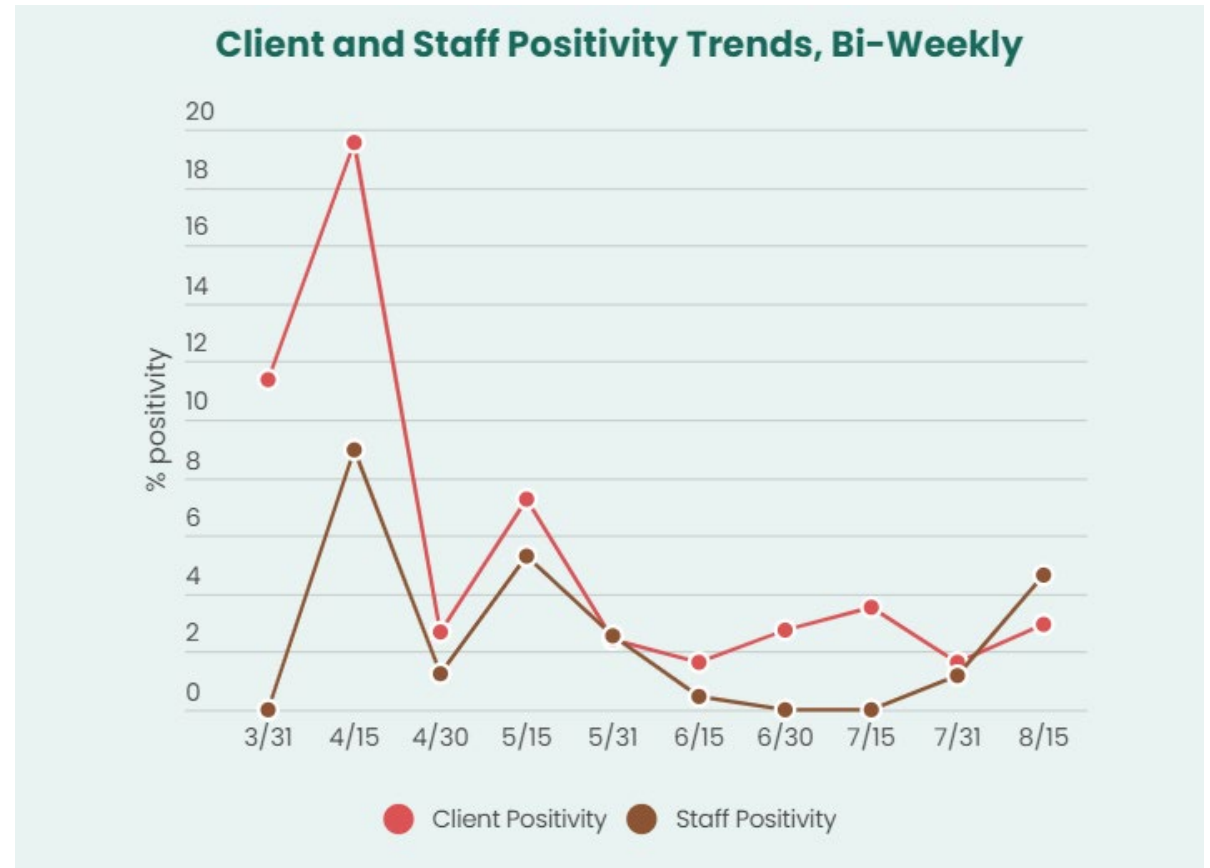
For more information: [www.cdc.gov/COVID19](https://www.cdc.gov/COVID19)

# 5.8 million cases reported in the United States\*



\*as of 8/27/20

# COVID-19 testing at homeless shelters, as of 8/27/20

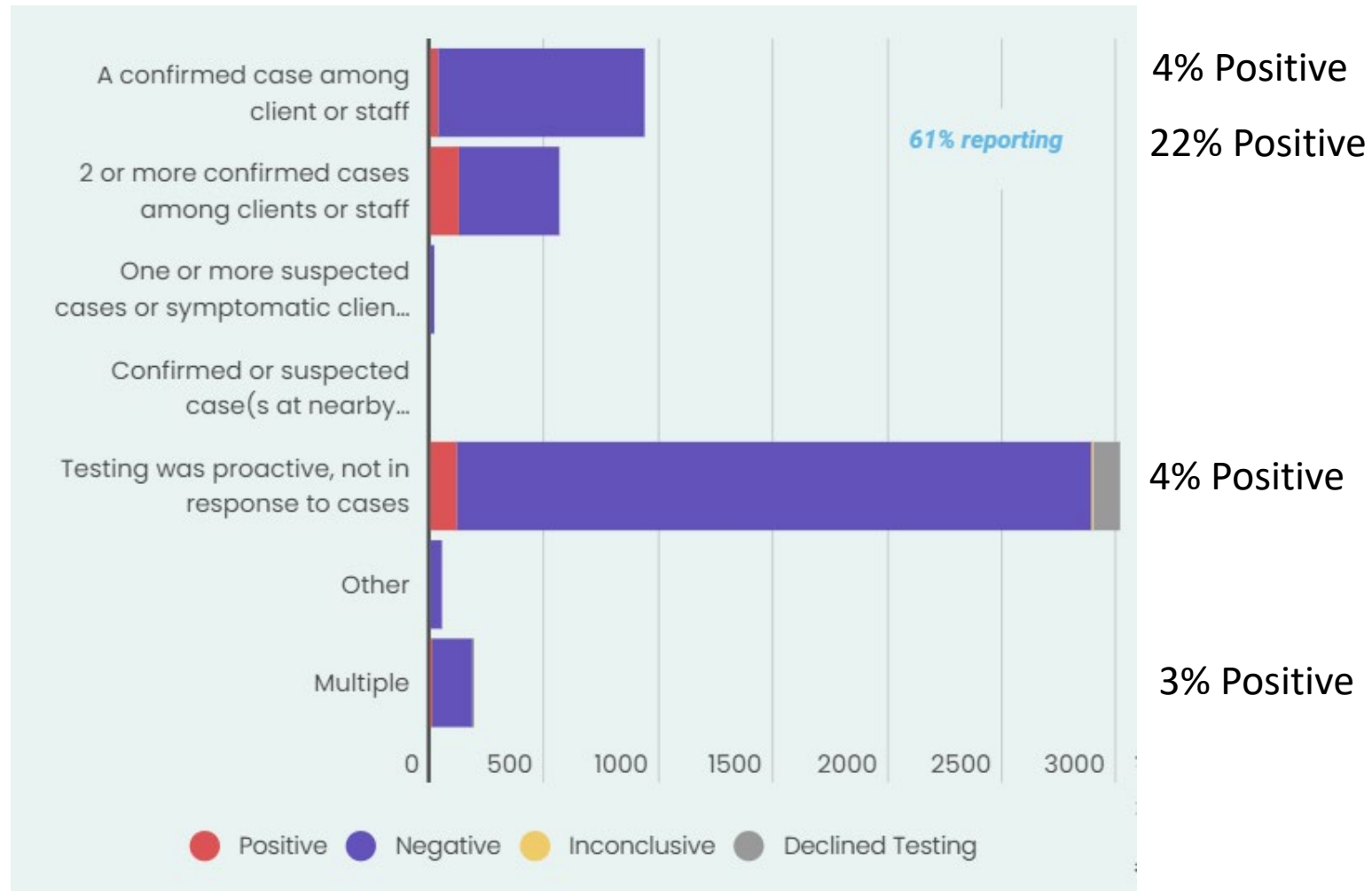


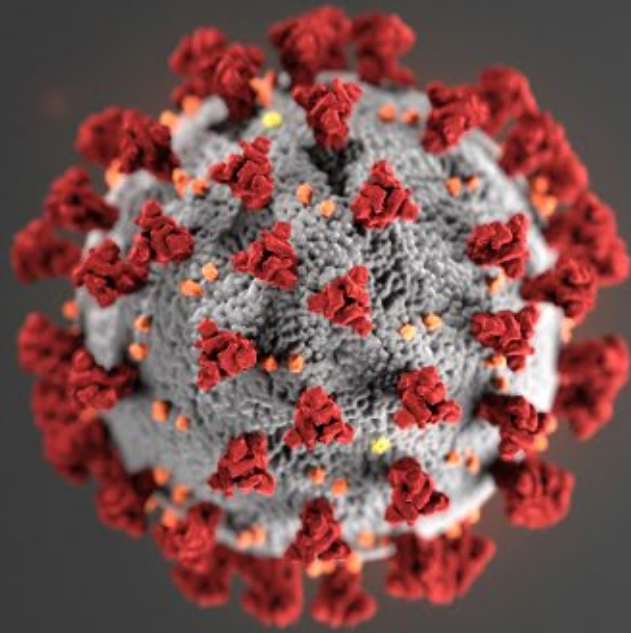
Visit the NHCHC [Universal COVID-19 Testing at Homeless Service Sites](#) dashboard online for more information.





# Positivity by reason for testing



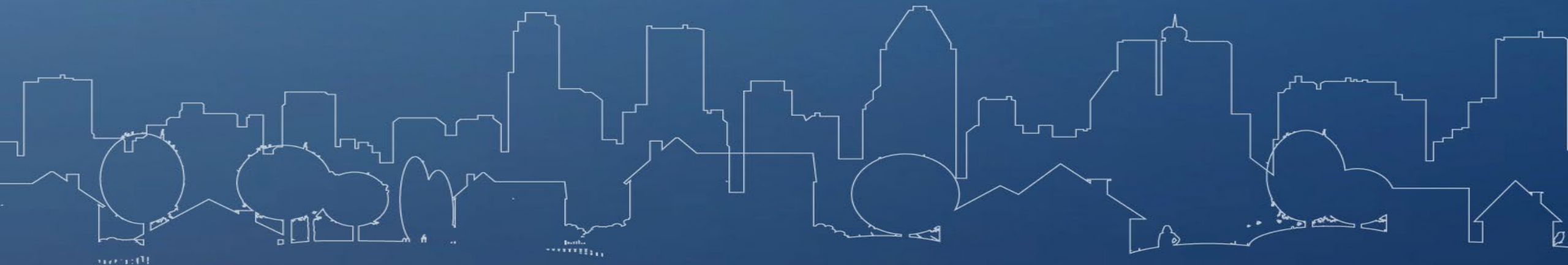


For more information, contact CDC  
1-800-CDC-INFO (232-4636)  
TTY: 1-888-232-6348 [www.cdc.gov](http://www.cdc.gov)

The findings and conclusions in this report are those of the authors and do not necessarily represent the official position of the Centers for Disease Control and Prevention.



# CDBG CARES Act Federal Register Notice



# CDBG CARES Act Federal Register Notice Highlights

## Eligible Activities

- Emergency Payments

## Other Program Requirements

- States
  - Acting directly
  - Entitlement areas
  - Tribal areas
- Period of performance and expenditure requirements

## Duplication of Benefits

- Procedures
- No order of assistance/“waterfall”

# HUD TECHNICAL ASSISTANCE SPOTLIGHT

- *CENTRALIZED RENT ADMINISTRATION*
- *SHALLOW SUBSIDIES*



# Project Funding Brief: Shallow Rental Subsidies

- A shallow rental subsidy program provides a long-term rental subsidy to participants experiencing housing instability
  - Lower level of assistance than “deep” subsidy programs such as PSH
  - Particularly effective for households who need a small amount of rental assistance but not the level of support provided through other programs such as Rapid Re-Housing
- Key design considerations: 1) Population of focus, 2) Length of Assistance, 3) Amount of Assistance, and 4) Additional program supports
- ESG or ESG-CV cannot provide permanent funding for a shallow subsidy program, but **could** provide initial funding for while a community identifies a permanent funding source.

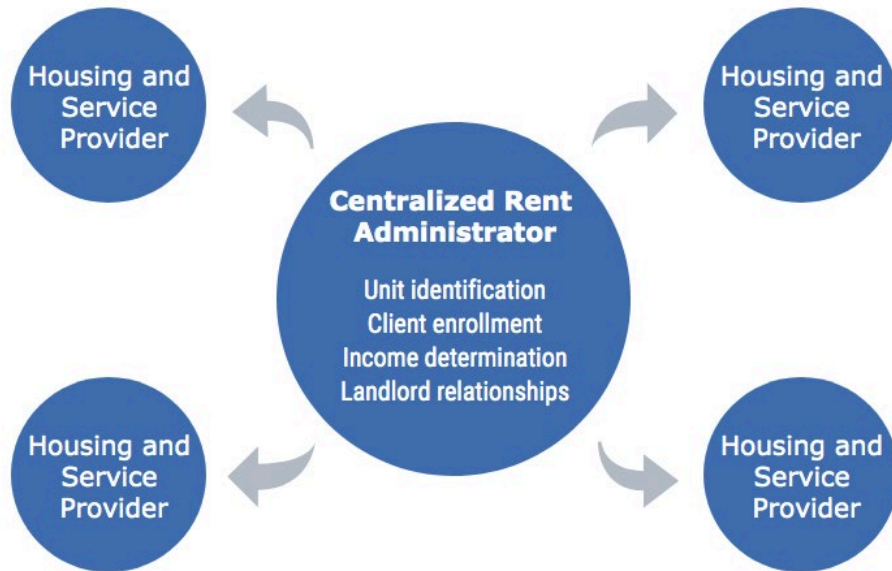
# Designing a Centralized Rent Administration Program

- ESG-CV funds can be used to establish a centralized rent administration program
  - Primary function program is financial management, distribution, and reporting for the pool of local rental assistance funding available to homeless and housing service providers
  - Can coordinate rental assistance funds from various federal, state, and local sources, including ESG, ESG-CV, and CoC funds
- Additional functions and layers of coordination can be added to the administrator role based on local need and the capacity of local service providers

# Designing a Centralized Rent Administration Program

Two primary models: “hub and spoke” model and program foundation model

### Hub and Spoke model



### Foundation model





# New Resources Posted

- [HMIS Budget and Staffing](#)
- [Racial Trauma and Trauma-Informed Services](#)
- [Equity Capacity Building: Hiring, Supervision, Training](#)
- [Mitigating the Spread: Washington DC Shelter Profile](#)
- [FAQ: Are there actions a Continuum of Care may take within its Coordinated Entry process to prioritize persons who are at increased risk of severe illness from COVID-19?](#)

# Key Websites

**HUD:** <https://www.hudexchange.info/homelessness-assistance/diseases/infectious-disease-prevention-response/>

**CDC:** <https://www.cdc.gov/coronavirus/2019-ncov/community/homeless-shelters/index.html>

**NHCHC:** <https://nhchc.org/clinical-practice/diseases-and-conditions/influenza/>

**USICH:** <https://www.usich.gov/tools-for-action/coronavirus-covid-19-resources/>

**VA:** <https://www.publichealth.va.gov/n-coronavirus/index.asp>

**HRSA:** <https://bphc.hrsa.gov/emergency-response/coronavirus-frequently-asked-questions.html>

# Federal Partner Contacts

For additional information or assistance, contact:

- Centers for Disease Control and Prevention:  
[www.cdc.gov/COVID19](https://www.cdc.gov/COVID19); 1-800-CDC-INFO (232-4636); TTY: 1-888-232-6348
- Department of Housing and Urban Development:  
[HUD Exchange Ask-A-Question \(AAQ\) Portal](#)

# Q & A

