



Office Hours: COVID-19 Planning and Response

August 21, 2020



Housekeeping

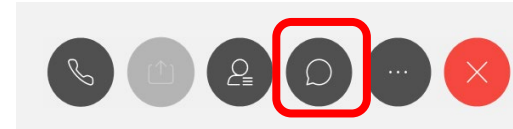
- A recording of today's session, along with the slide deck and a copy of the Chat and Q&A content will be posted to the HUD Exchange within 2-3 business days
- Event information for upcoming Office Hours, along with copies of all materials can be found here:

<https://www.hudexchange.info/homelessness-assistance/diseases/#covid-19-webinars-and-office-hours>

- To join the webinar via the phone, please call in using:
1-855-797-9485 Access code: 610 976 677

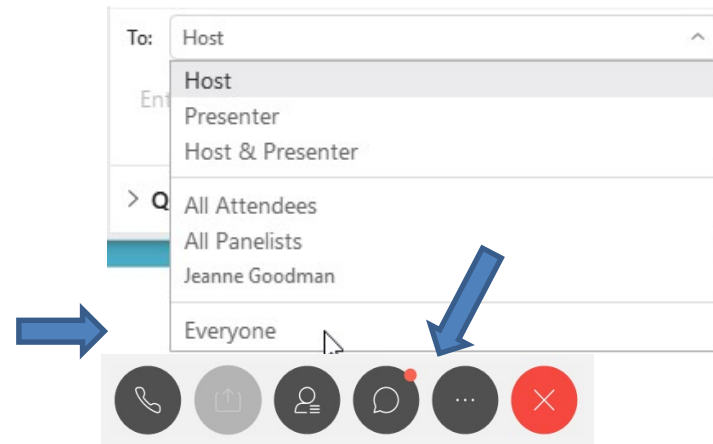
Chat Feature

Select the Chat icon to make a comment or ask a question.



Be certain the To field is set to **Everyone**

An orange dot on the Chat icon indicates that you have unread messages.



Speakers & Resource Advisors

Department of Housing and Urban Development

- Office of Special Needs Assistance Programs
 - Norm Suchar
 - Lisa Coffman
 - Karen DeBlasio
 - Marlisa Grogan
 - Abby Miller
 - William Snow
- Janis Ikeda, HUD TA, Corporation for Supportive Housing
- David Canavan, HUD TA, Canavan Associates

Centers for Disease Control and Prevention

- Emily Mosites, PhD MPH- COVID-19 At-Risk Population Task Force, Senior Advisor on Health and Homelessness



Speakers & Resource Advisors

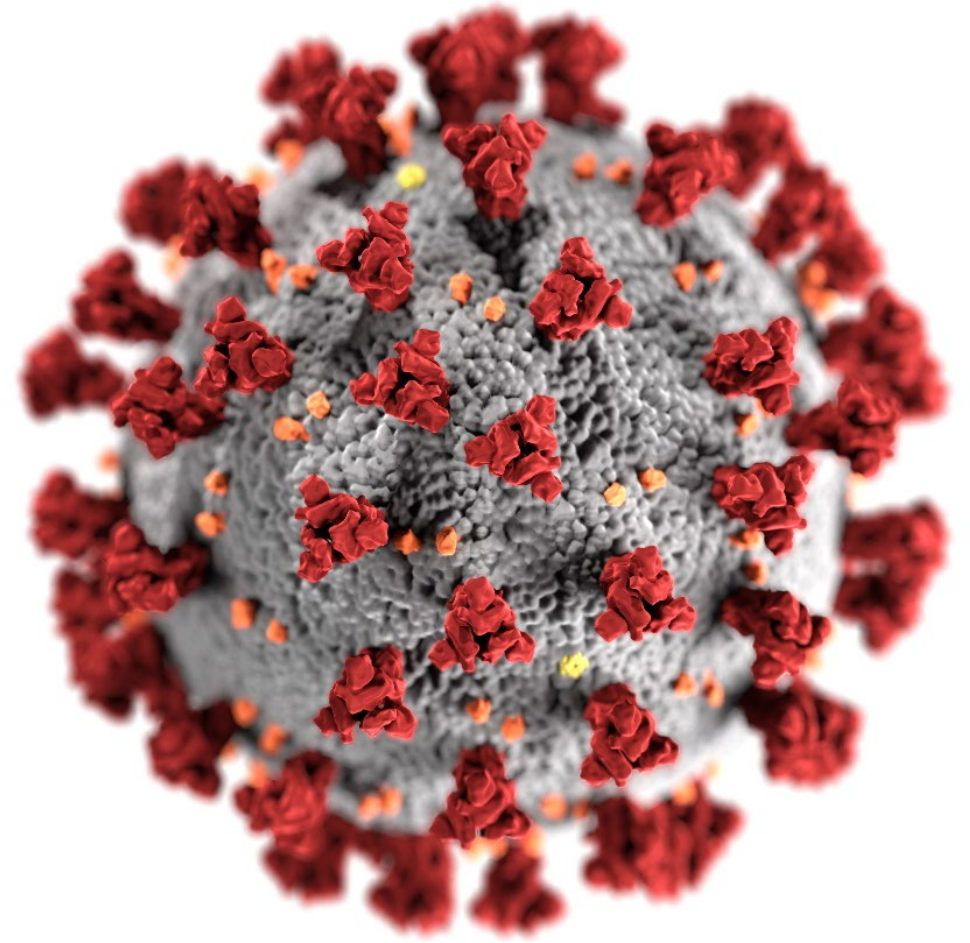
City of Houston

- Ana Rausch, Vice President of Program Operations,
Coalition for the Homeless of Houston/Harris County
Houston
- Jessica Preheim, Vice President of Strategic Planning &
Public Affairs

COVID-19 and Homelessness

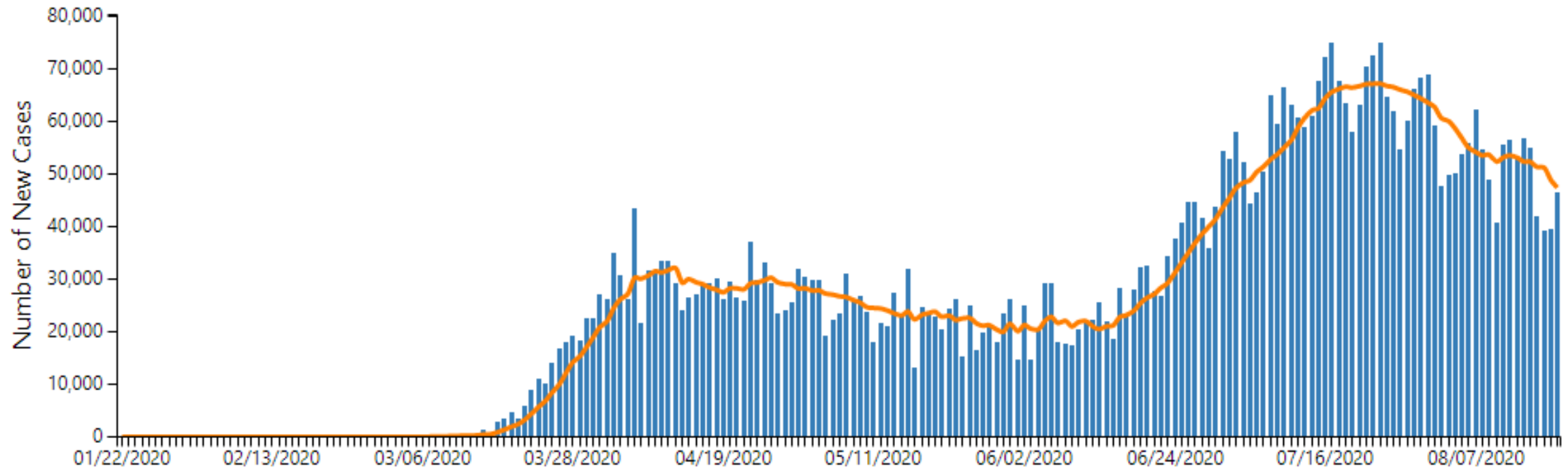
Guidance Updates

Homelessness Unit
Disproportionately Affected Populations Team
COVID-19 Response



cdc.gov/coronavirus

5.5 million cases reported in the United States*



*as of 8/20/20

COVID-19 testing at homeless shelters, as of 8/20/20



223

Total Testing Events Submitted



9801

Total Clients Tested



8.43%

Client COVID-19 Positivity Rate



1994

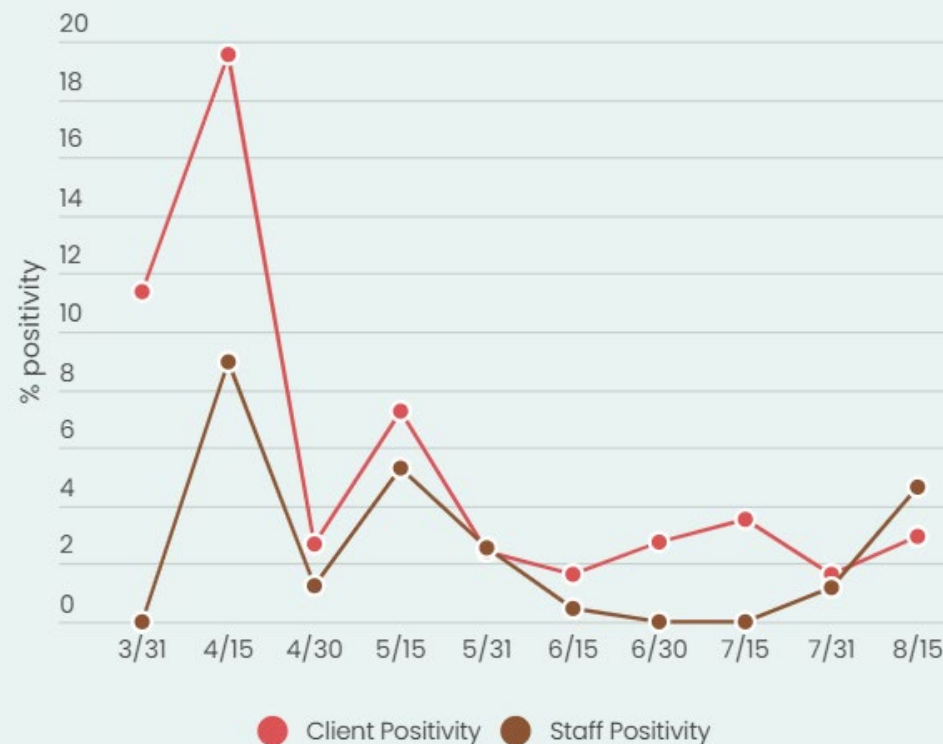
Total Staff Tested



4.51%

Staff COVID-19 Positivity Rate

Client and Staff Positivity Trends, Bi-Weekly



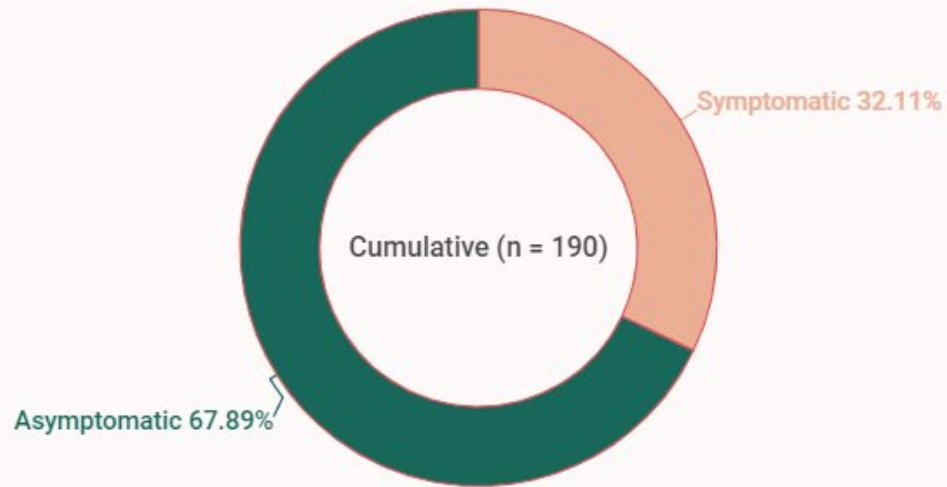
Visit the NHCHC [Universal COVID-19 Testing at Homeless Service Sites](#) dashboard online for more information.



Symptoms among people tested for COVID-19

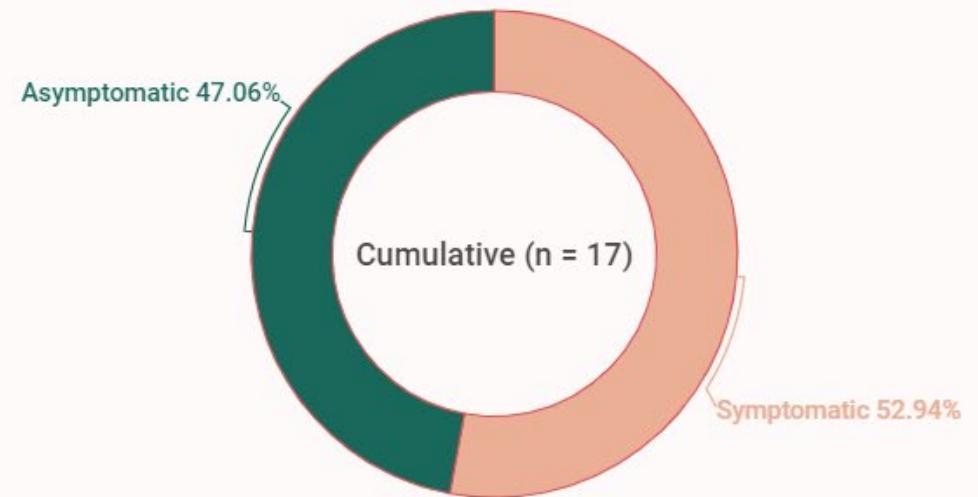
Presence of Symptoms in COVID-19 Positive Clients*

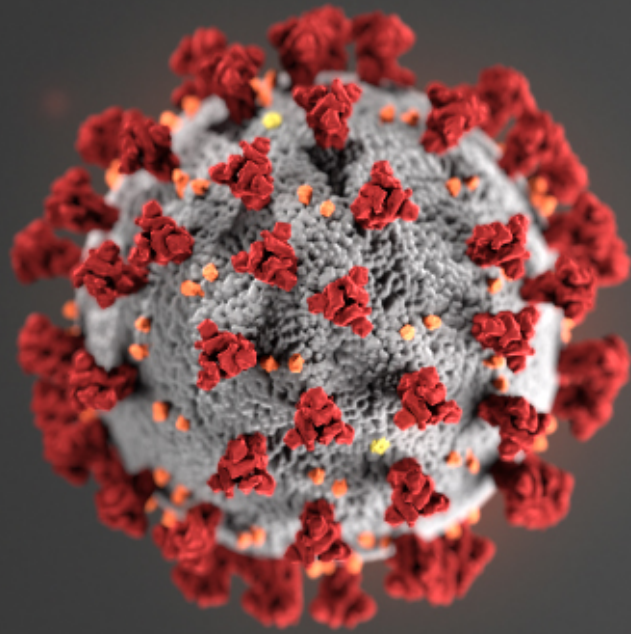
< Cumulative (n = 190) >



Presence of Symptoms in COVID-19 Positive Staff*

< Cumulative (n = 17) >





For more information, contact CDC
1-800-CDC-INFO (232-4636)
TTY: 1-888-232-6348 www.cdc.gov

The findings and conclusions in this report are those of the authors and do not necessarily represent the official position of the Centers for Disease Control and Prevention.





Community-wide COVID-19 Housing Program (CCHP)

Overview

- On July 1, Houston, Harris County, Coalition announced \$65M plan to house 5,000 people over the next two years
- Housing is healthcare



Proposed Strategy

Bridge to Permanent Supportive Housing

12-Month Rapid Re-housing

Diversion

Auxiliary/Social Distancing Emergency Shelter

Mental Health Case Management

Enhanced Street Outreach

PSH Housing Preservation

Risks

vs

Rewards



Massive surge will tax system



New partnerships/behaviors



\$8M funding gap



Increased public scrutiny



House 5,000 people



End chronic homelessness



Reduce encampments



Create up to 150 jobs

Budget

\$65 million total cost	
\$58 million in public funds committed	\$39 million – City of Houston
	\$18 million – Harris County
\$8 million gap remaining	Will need to come from private sources because of restrictions on use of available public funds

Request for Expression of Interest

2020 COVID CARES Housing Plan (CCHP) Request for Expression of Interest from Qualified Agencies

City of Houston, Houston Housing
Authority and Harris County
Funding Collaborative



Funding
Activities
Identified Jointly

REI Developed
Jointly

REI Released
Jointly

REI Scored
Jointly

Awards
Allocations
Coordinated

Timing of
Awards
Coordinated

Outcomes
Standardized (in
progress)

Reporting
Standardized (in
progress)

Braiding Funding

Budget Summary - 24 Months	Total Need	City				County				State	CARES Treasury	Private
Program Activities		ESG-CV	CDBG-CV	HOME TBRA	ESG-CV2	CDBG	ESG-CV1	ESG-CV2	CDBG-CV	ESG-CV		
DV Emergency Shelter	\$ 647,637	\$ 647,637										
Navigation PSH Bridge	\$ 1,500,000				\$ 164,942				\$ 1,335,058			
Navigation RRH	\$ 1,205,866	\$ 1,205,867										
Case Management PSH	\$ 5,116,800				\$ 681,741	\$ 4,435,059						
Case Management RRH	\$ 7,752,000		\$ 4,683,554		\$ 3,068,446							
Rental Assistance PSH	\$ 6,376,500				\$ 1,176,500		\$ 705,867	\$ 4,494,133				
Rental Assitance RRH	\$ 12,790,800	\$ 4,673,793		\$ 8,000,000	\$ 117,007							
Mental Health CM	\$ 900,000					\$ 900,000						
Diversion (CM)	\$ 5,200,000						\$ 2,794,133	\$ 2,405,867				
Diversion (financial)	\$ 5,277,776		\$ 2,076,151		\$ 1,707,000							\$ 1,494,625
Landlord Engagement/Fees	\$ 4,088,751										\$ 682,800	\$ 3,405,951
Move-in Kits & Furniture	\$ 3,220,800										\$ 3,220,800	\$ -
Prevention financial	\$ 1,000,000				\$ 401,667						\$ 598,333	
Prevention CM	\$ 560,000				\$ 373,333						\$ 186,667	
PHA Operations	\$ 1,022,224		\$ 1,022,224									
Program Ops	\$ 4,816,277		\$ 3,886,394			\$ 464,941			\$ 464,942			
Basic Needs	\$ 1,509,179											\$ 1,509,179
Project Management	\$ 1,606,539											\$ 1,606,539
Outreach	\$ 408,851									\$ 308,851	\$ 100,000	
Total Allocated	\$ 65,000,000	\$ 6,527,297	\$ 11,668,323	\$ 8,000,000	\$ 7,690,636	\$ 5,800,000	\$ 3,500,000	\$ 6,900,000	\$ 1,800,000	\$ 308,851	\$ 4,788,600	\$ 8,016,294

CCHP Fund

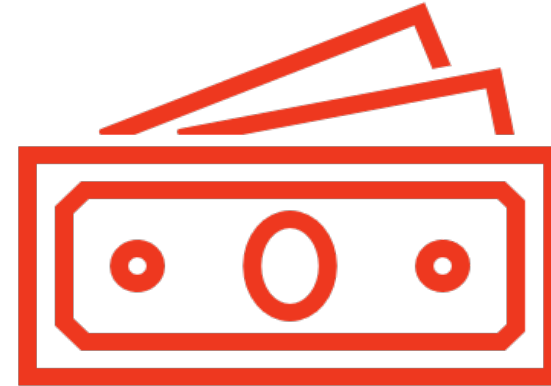
- Established a CCHP Fund at the Coalition restricted to use to support the implementation of the CCHP
- Currently un-funded line items are:
 - CCHP Project Management Team ~\$1.6M
 - Landlord Incentive Fees ~\$3.4M
 - Diversion (private/flexible) ~\$1.5M
 - Basic Needs in Housing ~\$1.5M

Private Funding Updates

Funding Needed:
\$8,016,294

Funding Secured:
\$1,286,270

Requests Under Review:
\$3,400,000



Program Implementation & Support Structure

CCHP Leadership Team
(CFTH, City, County, CoC)

Senior Program Manager
(CFTH New Hire)

HUD TA Support

Partner Support
(Jess/Ana)

Communications
(Catherine)

CCHP Funding.
(Jess, Melody, Sara,
Jared, Concetta)

CCHP Funding.
(Jess, Melody, Sara,
Jared, Concetta)

Bridge to PSH
(CFTH New Hire)

CAS
(Erol, James, Scot)

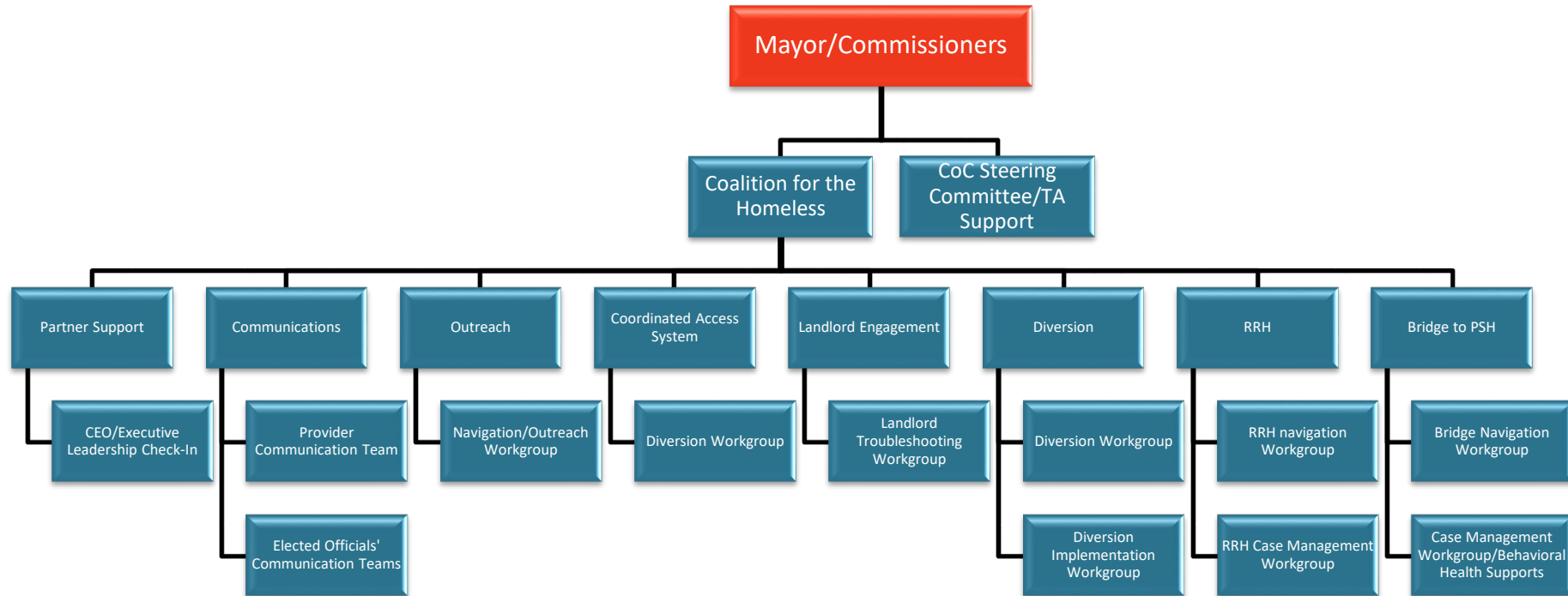
HMIS/Performance
(Erol/Ana)

RRH
(CFTH New Hire)

Landlord
Engagement
(Carrie/Ashlie)

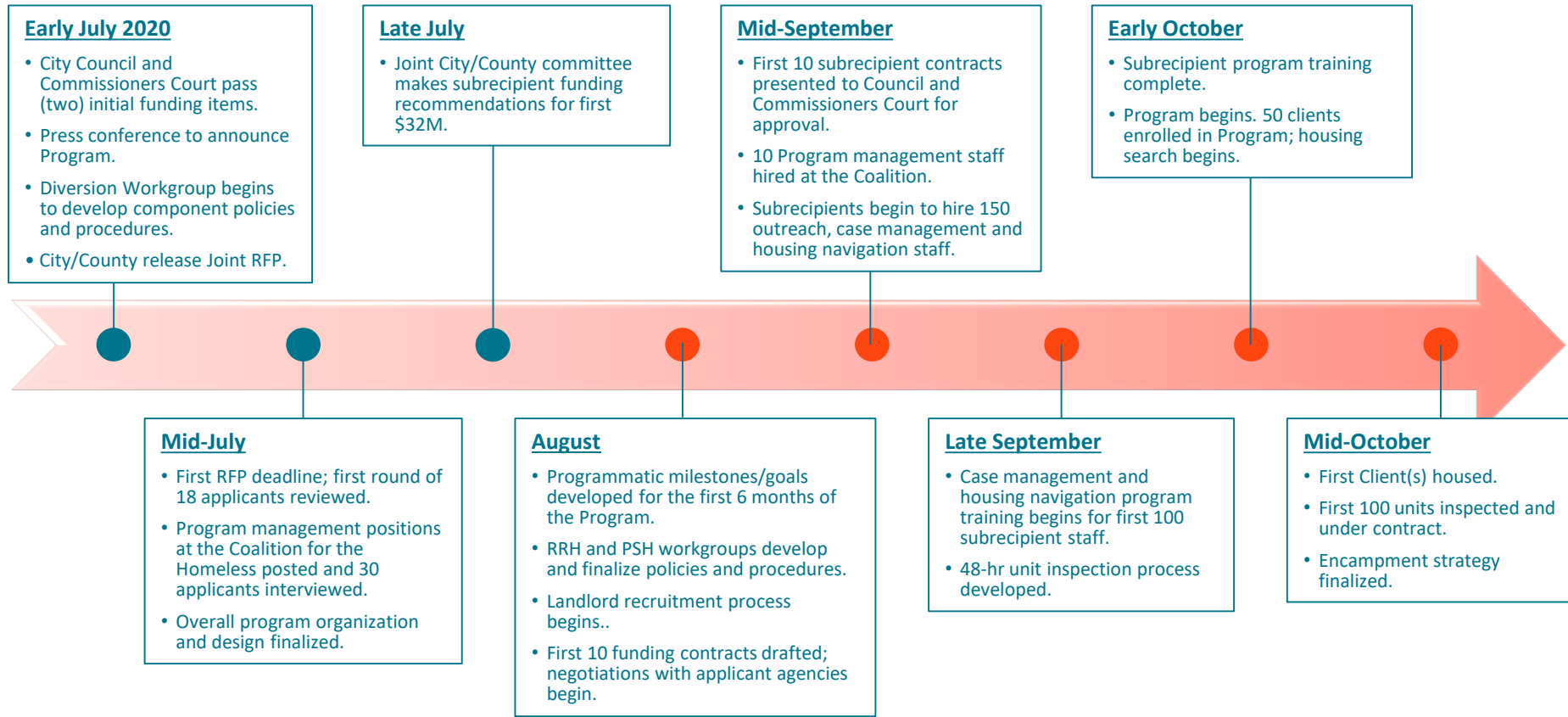
Behavioral Health
Supports

Program Planning & Management



Community-wide COVID Housing Program

Startup Timeline



Housing Goals

6 Month Housing Goals

- **By March 2021, we will have housed:**
 - 410 people who have experienced long-term homelessness (via Bridge to Permanent Supportive Housing)
 - 585 people who were newly homeless because of COVID (via Rapid Re-Housing)
 - 415 people who were on the verge of becoming homeless (via Diversion)
 - **Total: 1,410 people**

2 Year Housing Goals

- **By October 2022, we will have housed:**
 - 1,000 people who have experienced long-term homelessness (via Bridge to PSH)
 - 1,700 people who were newly homeless because of COVID (via RRH)
 - 2,100 people who were on the verge of becoming homeless (via Diversion)
 - 200 people who were in danger of falling back into homelessness (via PSH Housing Preservation)
 - **Total: Approximately 5,000 people**



Thank You!!

The Coalition for the Homeless leads in the development, advocacy, and coordination of community strategies to prevent and end homelessness.

The Way Home is the collaborative model to prevent and end homelessness in Houston, Harris, Ft. Bend, & Montgomery Counties. For more information visit www.thewayhomehouston.org

Ana Rausch	Jessica Preheim
arausch@homelesshouston.org	jpreheim@homelesshouston.org

HUD TECHNICAL ASSISTANCE SPOTLIGHT

- *SPECIAL POPULATIONS REHOUSING STRATEGY:*
YOUTH AND YOUNG ADULTS
- *SPECIAL POPULATIONS REHOUSING STRATEGY:*
FAMILY VIOLENCE



Special Populations Rehousing Strategy: Youth and Young Adults

- Embed considerations of **equity** in your planning process by working in partnership with youth and young adults with lived experience of homelessness, especially LGBTQ-identifying youth and Black, Indigenous and other non-Black youth of color, who are at greater risk of both experiencing homelessness and being severely impacted by COVID-19.
- Align ESG-CV resources with other funding sources to **maximize immediate resources** to prevent homelessness and housing instability, and to rehouse youth and young adults quickly.
- Create funding opportunities and practices through ESG-CV to increase that increase **access to services that are responsive** to the safety and cultural needs of youth and young adults, especially.

Special Populations Rehousing Strategy: Family Violence

- Assess and incorporate the needs of DV survivors during the planning and dissemination of ESG-CV and other CARES Act funds.
- Increase access to funds for victim service providers (VSPs) and build their capacity to successfully manage and deliver ESG programs like rapid re-housing and homelessness prevention.
- Revise ESG and other system policies or standards to reflect survivor needs and adopt a trauma-informed approach to services and housing provision.
- Train homeless service providers to adapt service delivery to meet survivors' needs during COVID-19.
- Commit to client-led care.

New Resources Posted

- [Homeless System Response: Special Population Rehousing Strategy: Family Violence](#)
- [Homeless System Response: Special Population Rehousing Strategy: Youth and Young Adults](#)
- [Using IDIS Online for the Emergency Solutions Grants \(ESG\) Program](#)
- [Regional Sole Source Aquifer MOUs between HUD and EPA](#)
- [Helping Older Adults Age Safely in Place: What Multifamily Owners Need to Know About Home Modification](#)
- [Sample Language for the ESG-CV Project Description in IDIS](#)
- [CDBG-DR COVID-19 Notice of Waivers, Alternative Requirements and Extensions for 2015-2019 Disasters](#)

Key Websites

HUD: <https://www.hudexchange.info/homelessness-assistance/diseases/infectious-disease-prevention-response/>

CDC: <https://www.cdc.gov/coronavirus/2019-ncov/community/homeless-shelters/index.html>

NHCHC: <https://nhchc.org/clinical-practice/diseases-and-conditions/influenza/>

USICH: <https://www.usich.gov/tools-for-action/coronavirus-covid-19-resources/>

VA: <https://www.publichealth.va.gov/n-coronavirus/index.asp>

HRSA: <https://bphc.hrsa.gov/emergency-response/coronavirus-frequently-asked-questions.html>

Federal Partner Contacts

For additional information or assistance, contact:

- Centers for Disease Control and Prevention:
www.cdc.gov/COVID19; 1-800-CDC-INFO (232-4636); TTY: 1-888-232-6348
- Department of Housing and Urban Development:
[HUD Exchange Ask-A-Question \(AAQ\) Portal](#)

Q & A

