



# Conducting a Mitigation Needs Assessment

**2019 CDBG-DR Problem Solving Clinic**

**Kansas City – Overland Park | July 30 – August 1, 2019**

# Welcome and Speakers

- Session Objectives

- Participants will learn about approaches for quantitatively assessing mitigation needs
- Participants will learn where to find more detailed information and resources for conducting a needs assessment

- Speaker

- Laurie Schoeman, Enterprise Community Partners



# Hazard Mitigation Overview



# What Is Hazard Mitigation?

- Hazard mitigation is the effort to reduce loss of life and property by lessening the impact of disasters. It is most effective when implemented under a comprehensive, long-term mitigation plan.



# Mitigation-An Investment in Communities

- Mitigation is an investment in your community's future safety and sustainability. Mitigation helps to:
  - Prevent injury and loss of life
  - Reduce exposure to risk from natural hazards
  - Prevent damage to community assets (existing and future)
  - Prevent damage to a community's unique economic, cultural, and environmental assets
  - Reduce costs of disaster response/recovery
- Minimize operational down time and accelerate recovery of government and business after a disaster



# Mitigation-Investment in Community Development

- Advance other community objectives
- Capital improvements, infrastructure protection, open space preservation, and economic resiliency
- A one-time cost for implementing a mitigation action often results in long-term savings to the community.





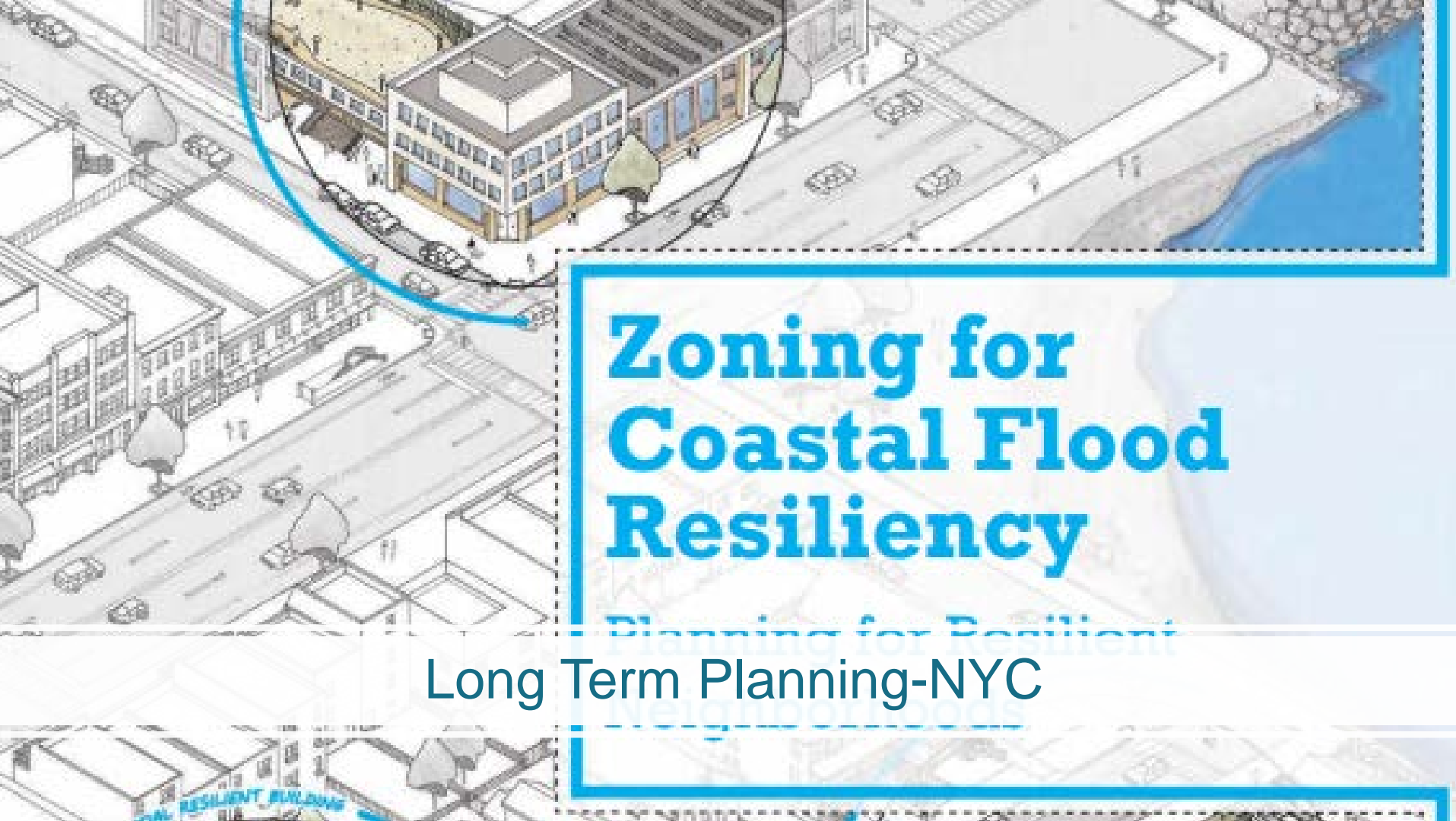
**CEA** CALIFORNIA  
EARTHQUAKE  
AUTHORITY™

**THE STRENGTH  
TO REBUILD®**

## Established by the California Residential Mitigation Program (CRMP)

CRMP is a joint powers authority created by the California Earthquake Authority and the Governor's Office of Emergency Services. CRMP was established to carry out mitigation programs to assist California homeowners who wish to seismically retrofit their houses. Our goal is to provide grants and other types of assistance and incentives for these mitigation efforts and EBB is the first of these programs.





# Zoning for Coastal Flood Resiliency

Planning for Resilient  
Neighborhoods

Long Term Planning-NYC

COASTAL RESILIENT BUILDING



# Mitigation Planning enables state, tribal, and local governments



# Mitigation Plan Can Map

Funding Opportunities

Roadmap for Recovery and Resilience

Protect Communities



# Mitigation Needs Assessment



# Kansas Hazard Mitigation Plan



# Mitigation Core Components

## Themes

- Coordination
- Integration with local planning
- Incorporation of Feedback
- Vulnerabilities
- Actions

## Inputs

- Informed by Risk Assessment
- Historical Trends
- Future Trends and Science Informed Models





# Actions for Mitigation Planning

- Build Your Planning Team
- Assessment of Need and Risk and Project Area
- Outreach and External Input
- Identify your Projects and Pipeline and Timeline
- Identify Mitigation Activities
- Keep the Plan Current
- Create a Safe and Resilient Community



# Mitigation Team

- Qualifications
  - Hazard Management
  - Emergency Prep (OEM)
  - Comptroller function
  - Community
  - Planning/Zoning
  - Capital projects



# Assessment of Risk and Data Gathering

- Hazard Maps
- Comprehensive Plan
- Economic Development Analysis
- Zoning Maps
- Codes
- Emergency Plans
- Safe Growth Audit
- Community Meetings and Input
- Capital Projects Pipeline





# FEMA WORKSHEET MITIGATION MAPPING

## Mitigation Planning Team Worksheet

Use this worksheet to identify partner organizations to invite to participate on the planning team. Some organizations do not need to be involved in every decision of the planning process but are stakeholders that require outreach and involvement during the planning process. Revise the list of general partners below to reflect the organizations in your community. Mark which organizations will be invited to participate on the planning team and which will be involved through stakeholder outreach activities.

**Planning Team** – The core group responsible for making decisions, guiding the planning process, and agreeing upon the final contents of the plan

**Stakeholders** – Individuals or groups that affect or can be affected by a mitigation action or policy

Partner Organization	Planning Team	Stakeholder	Notes
<b>Local Agencies</b>			
Building Code Enforcement			
City Management/County Administration			
Emergency Management			
Fire Department/District			
Floodplain Administration			
Geographic Information Systems			
Parks and Recreation			
Planning/Community Development			
Public Works			
Stormwater Management			
Transportation (Roads and Bridges)			
City Council/Board of Commissioners			
Planning Commission			
Planning/Community Development			
Regional/Metropolitan Planning Organization(s)			
City/County Attorney's Office			
Economic Development Agency			
Local Emergency Planning Committee			
Police/Sheriff's Department			
Sanitation Department			
Tax Assessor's Office			
<b>Special Districts and Authorities</b>			
Airport, Seaport Authorities			
Fire Control District			
Flood Control District			
School District(s)			
Transit Authority			
Utility Districts			



## Mitigation Action Implementation Worksheet

Complete a mitigation action implementation worksheet for each identified mitigation action.

Jurisdiction:	
Mitigation Action/Project Title:	
Background/Issue:	
Ideas for Integration:	
Responsible Agency:	
Partners:	
Potential Funding:	
Cost Estimate:	
Benefits: (Losses Avoided)	
Timeline:	
Priority:	
Worksheet Completed by:	(Name/Department)

# Mitigation Needs Assessment Components

- Any mitigation needs assessment must quantitatively assess the significant potential impacts and risks of hazards affecting the following seven critical service areas:

- Safety and Security
- Communications
- Food, Water, Sheltering

- Health and Medical
- Hazardous Material (Management)
- Energy (Power & Fuel)



# Safety and Security

- Evacuation routes
- Force protection and security for staff
- Security assessments at external facilities
- Location of correctional facilities
- Continuity of Services
- Communications
- Capacity of First Responder Staff
- Placement of Critical Infrastructure



# Communications

- Infrastructure
- Coordination and Protocols
- Status of telecommunications service
- Reliability of internet service and cellular service
- Requirements for radio/satellite communication capability
- Status of public safety radio communications and emergency alert
- Status of phone infrastructure and emergency line servicing.



# Food, Water, Sheltering

- Number of people to evacuate
- Evacuation routes and Evacuation time frame
- Food, water, shelter availability
- Point of Distribution Public and Private
- Impacts to the food supply chain
- Location of water control systems (e.g., dams, levees, storm drains)
- Number and location of open shelters
- Transitional Sheltering Assistance options
- Potential future sheltering requirements
- Status of area agriculture



# Transportation

- Inventory of major roads and highways, critical and noncritical bridges
- Status of maintenance and emergency repairs
- Availability of public transit systems including underground rail, buses, and ferry services, railway, airports, ports.



# Health and Medical

- Status of acute medical care facilities (e.g., level 1 trauma center), chronic medical care facilities (e.g., long term care centers), primary care and behavioral health facilities.
- Ability to evacuate active patients
- Status of state and local health departments
- Public health advisories
- Availability of mortuary and post-mortuary services





# Hazardous Material (Management)

- Amount, type, and containment procedures of hazardous materials  
Inventory of Hazardous materials
- Status of hazardous material supply chain



# Energy (Power and Fuel)

- Inventory of: electrical power generation and distribution facilities, nuclear within 10 miles, substations.
- Number of people and locations without power
- Availability of temporary power resources
- Status of commercial fuel stations
- Responder fuel availability and status of critical fuel facilities



# Mitigation Needs Assessment



- Grantees' plans for use of CDBG-MIT funding should be informed by a mitigation needs assessment.
- Through a mitigation needs assessment, grantees will be able to identify and quantify the risk of damage or loss posed by current and future hazards
- Mitigation projects should be linked back to these identified risks



# Thank you! Questions?

- Laurie Schoeman, [lschoeman@enterprisecommunity.org](mailto:lschoeman@enterprisecommunity.org) (212) 284-7156

